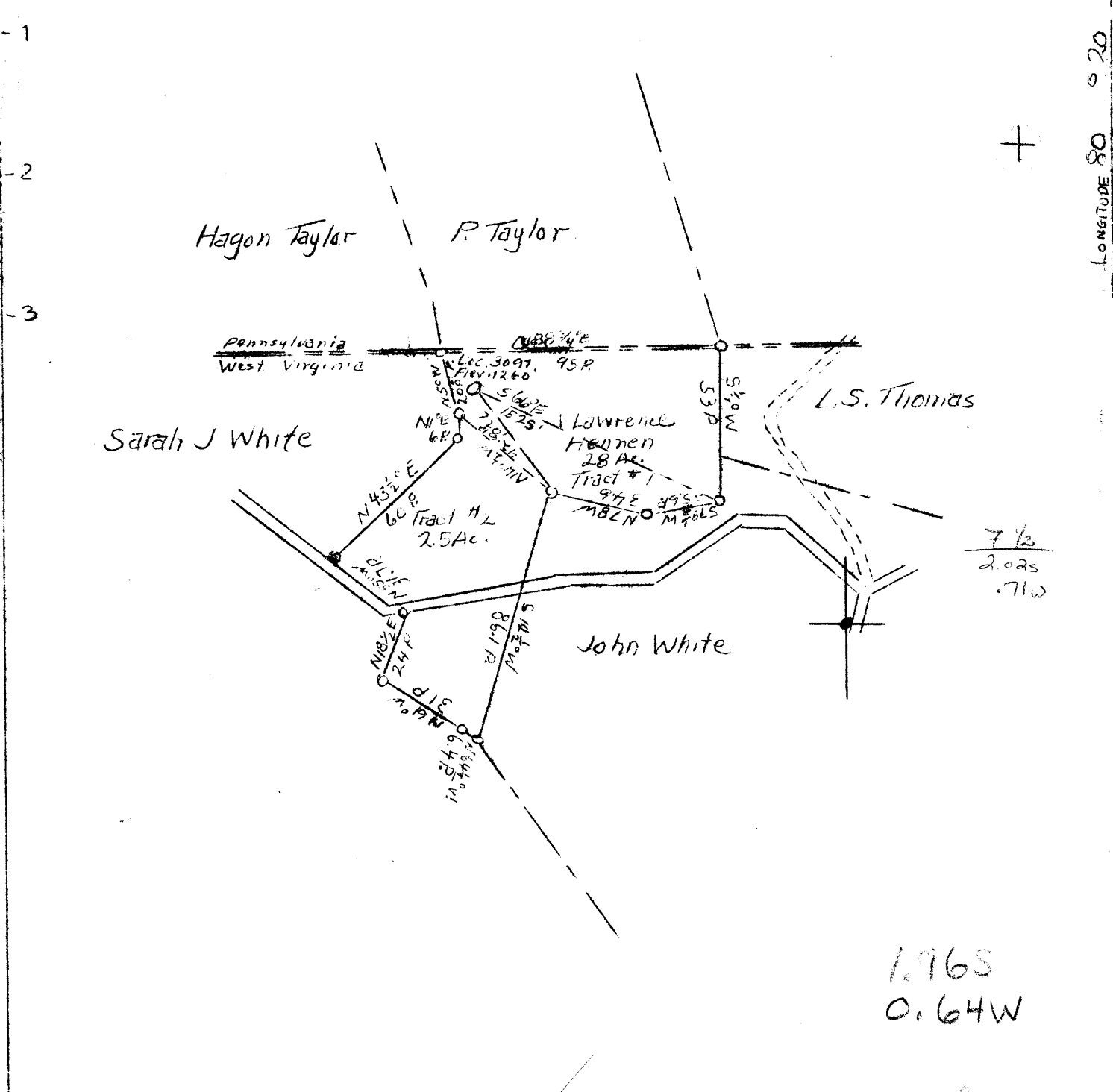


Latitude 39 ° 45'



Longitude 80 ° 20'

$\frac{7 \frac{1}{2}}{2.025} = .71w$

1.96S  
0.64W

CREATED BY Charles E. Baker Morgantown W.Va.

Abandonment

COMPANY	<u>The Manufacturers Light and Heat Co.</u>
ADDRESS	<u>800 Union Trust Building Pittsburgh Pa.</u>
FARM	<u>J. Lawrence Hennen</u>
TRACT	<u>1</u> ACRES <u>28</u> Lease No. <u>13082</u>
WELL (FARM) No.	<u>1</u> SERIAL No. <u>3097</u>
ELEVATION (SPIRIT LEVEL)	<u>1260</u>
QUADRANGLE	<u>Manningtown W.Va. Pa.</u>
COUNTY	<u>Morgan</u> DISTRICT <u>Battle</u>
ENGINEER	<u>Thomas E. Virginia</u>
ENGINEER'S REGISTRATION No.	<u>150B</u>
FILE No.	DRAWING No. <u>Y-11-506</u>
DATE	<u>December 16, 1947</u> SCALE <u>1" = 800'</u>

STATE OF WEST VIRGINIA  
Oil and Gas Division  
DEPARTMENT OF MINES  
Charleston

WELL LOCATION MAP  
File No. MON - 345 -A

Denotes location of well on U. S. Topographic Maps, scale 1 to 62,500, latitude and longitude lines being represented by border lines as shown

Denotes one inch spaces on border line of original tracing.

J. LAWRENCE HENNEN No. 1 (3097) - M. L. & H. Co. - MON-345-A



401

STATE OF WEST VIRGINIA  
DEPARTMENT OF MINES  
OIL AND GAS DIVISION

WELL RECORD

Permit No. ....

Oil or Gas Well Gas  
(KIND)

Company THE MANUFACTURERS LIGHT & HEAT COMPANY  
Address 800 Union Trust Bldg., Pittsburgh, Penna.  
Farm J. L. Hennen et al. Acres 28  
Location (waters) .....  
Well No. 3097 Elev. 1260  
District Battelle County Monongalia  
The surface of tract is owned in fee by E. J. & J. L. HENNING  
R. D. 1, Burton, W. Va. Address .....  
Mineral rights are owned by The Manufacturers Lt & Ht. Co.  
800 Union Trust Bldg., Pittsburgh, Penna.  
Drilling commenced June 10th, 1926  
Drilling completed October 26th, 1926  
Date Shot ..... From ..... To .....  
With .....

Casing and Tubing	Used in Drilling	Left in Well	Packers
Size			
16			Kind of Packer
18	322'	50' 10"	Hook Wall
10	1055'	30' 5"	Size of
8 1/4	1876'	1876'	6-5/8 X 4
6	2284'	2284'	Depth set
5 3/16			2339
3			Perf. top
2			Perf. bottom
Liners Used			Perf. top
			Perf. bottom

Open Flow 1 1/4 10ths Water in 2" 158 McF Inch  
/10ths Merc. in ..... Inch  
Volume ..... Cu. Ft.  
Rock Pressure 170 lbs. 1 hrs.  
Oil ..... bbls., 1st 24 hrs.  
Fresh water ..... feet  
Salt water ..... feet

CASING CEMENTED ..... SIZE ..... No. Ft. .... Date  
COAL WAS ENCOUNTERED AT 638 FEET 48 INCHES  
912 FEET 60 INCHES 1022 FEET 72 INCHES  
..... FEET ..... INCHES ..... FEET ..... INCHES

Formation	Color	Hard or Soft	Top	Bottom	Oil, Gas or Water	Depth Found	Remarks
Clay			0	44			
Sand, Slate & Shells			44	312			
Sand			312	330			Hole full water at 324
Slate & Shells			330	618			
Sand			618	638			
Coal			638	642			
Slate & Shells			642	912			
Mapletown Coal			912	917			
<del>Pittsburgh Coal</del> Slate & Lime			917	1022			
Pittsburgh Coal			1022	1028			
Slate Sand & Shells			1028	1680			
Gas Sand			1680	1793			
Slate & Shells			1793	1843			
Salt Sand			1843	1946			Hole full water at 1921
Little Lime			2230	2240			
Pencil Cave			2240	2245			
Big Lime			2245	2307			
Big Injun Sand			2307	2528			
Slate & Lime			2528	2975			
Fifty Foot Sand			2975	3035			
Thirty Foot Sand			3035	3085			Gas at 3065 to 3069
Slate & Lime			3085	3105			
Red Rock			3105	3115			
Slate & Shells			3115	3140			
Sand			3140	3155			
Red Rock			3155	3160			
Gordon Stray Sand			3160	3174			
Sand shells			3174	3232			
Red Rock			3232	3237			
Gordon Sand			3237	3247			
Sand Shells			3247	3285			
4th. Sand			3285	3297			
Sand shells			3297	3335			
5th. Sand			3335	3347			
Sand shells			3347	3435			
Byard Sand			3435	3440			
Total Depth.				3448			Well tubed with 4" Tubing with 6-5/8" X 4" - Hook Wall Parker set at 2339.

