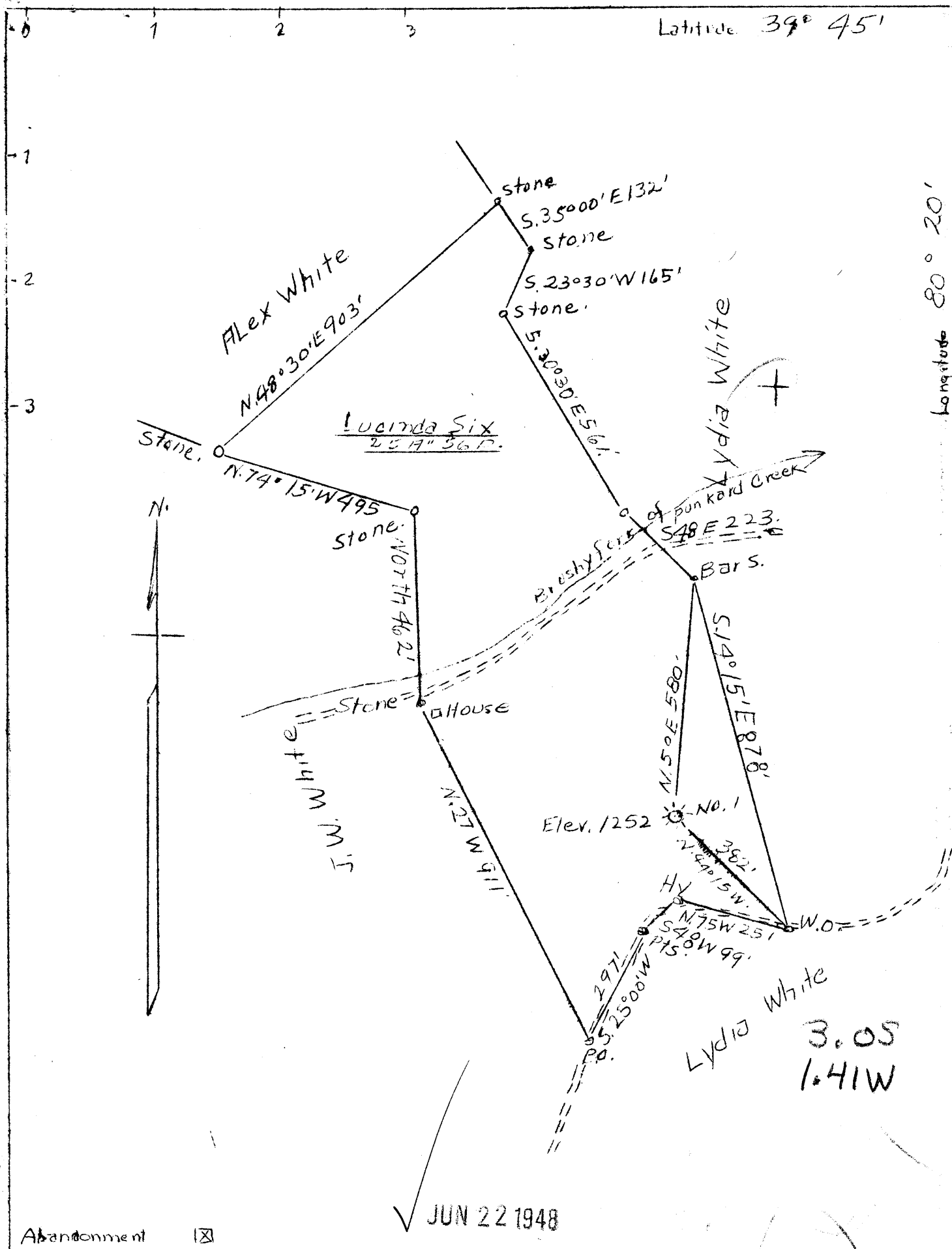


Latitude 39° 45'

Longitude 80° 20'



JUN 22 1948

Abandonment

COMPANY ROY W. CLOVIS
 ADDRESS WAYNESBURG, PA.
 FARM LUCINDA SIX
 TRACT 1 ACRES 25A 56P LEASE NO.
 WELL (FARM) NO. 1 SERIAL NO.
 ELEV. (S.L.) 1456'
 QUADRANGLE MANNINGTON
 COUNTY MONONGALIA DIST. BATTELLE
 ENGINEER A. L. HEADLEY
 ENGINEER'S REG. NO.
 FILE NO. DWG. NO.
 DATE 5/10/48 SCALE 1 TO 300'

STATE OF WEST VIRGINIA
 DEPARTMENT OF MINES
 OIL AND GAS DIVISION
 CHARLESTON
 WELL LOCATION MAP
 FILE NO. MON 374A

+ DENOTES LOCATION OF WELL ON U.S. TOPOGRAPHIC MAPS, SCALE 1 TO 62,500
 LATITUDE AND LONGITUDE LINES BEING REPRESENTED BY BORDER LINES AS SHOWN
 - DENOTES ONE INCH SPACES ON BORDER LINE OF ORIGINAL TRACTING.



STATE OF WEST VIRGINIA
DEPARTMENT OF MINES
OIL AND GAS DIVISION

YMA

WELL RECORD

Permit No. *AP 77-A*

Oil or Gas Well (KIND)

Company	ROY W. CLOVIS	Casing and Tubing	Used in Drilling	Left in Well	Packers
Address	WAYNESBURG, PENNSYLVANIA	Size			Kind of Packer
Farm	Lucinda Six Acres 25	16			
Location (waters)	<i>White Creek</i>	13			
Well No.	1 Elev. 1456	10		pulled	Size of
District	Battelle County Monongalia	8 1/4		pulled	
The surface of tract is owned in fee by	Address	6 1/2	2187	2187	Depth set
Mineral rights are owned by	Address	5 3/16			
Drilling commenced		3			Perf. top
Drilling completed	<i>August 1925</i>	2	3465	3465	Perf. bottom
Date Shot	From To	Liners Used			Perf. top
With					Perf. bottom
Open Flow	/10ths Water in Inch				
	/10ths Merc. in Inch	CASING CEMENTED	SIZE	No. Ft.	Date
Volume	Cu. Ft.				
Rock Pressure	lbs. hrs.	COAL WAS ENCOUNTERED AT	FEET	INCHES	
Oil	bbls., 1st 24 hrs.		FEET	INCHES	FEET
Fresh water	feet		FEET	INCHES	FEET
Salt water	feet		FEET	INCHES	FEET

Formation	Color	Hard or Soft	Top	Bottom	Oil, Gas or Water	Depth Found	Remarks
Gas Sand			1612	1687	no water		
Salt Sand			1858	1967			
Big Lime			2180	2240			
Big Injun			2240	2510			
Fifty Foot			2935	2980			Gas show blew out
Gordon Sand			3215	3238			
Fifth Sand			3268	3294			
Bayard Sand			3395	3400			Gas 3395'
Total Depth				3465'			