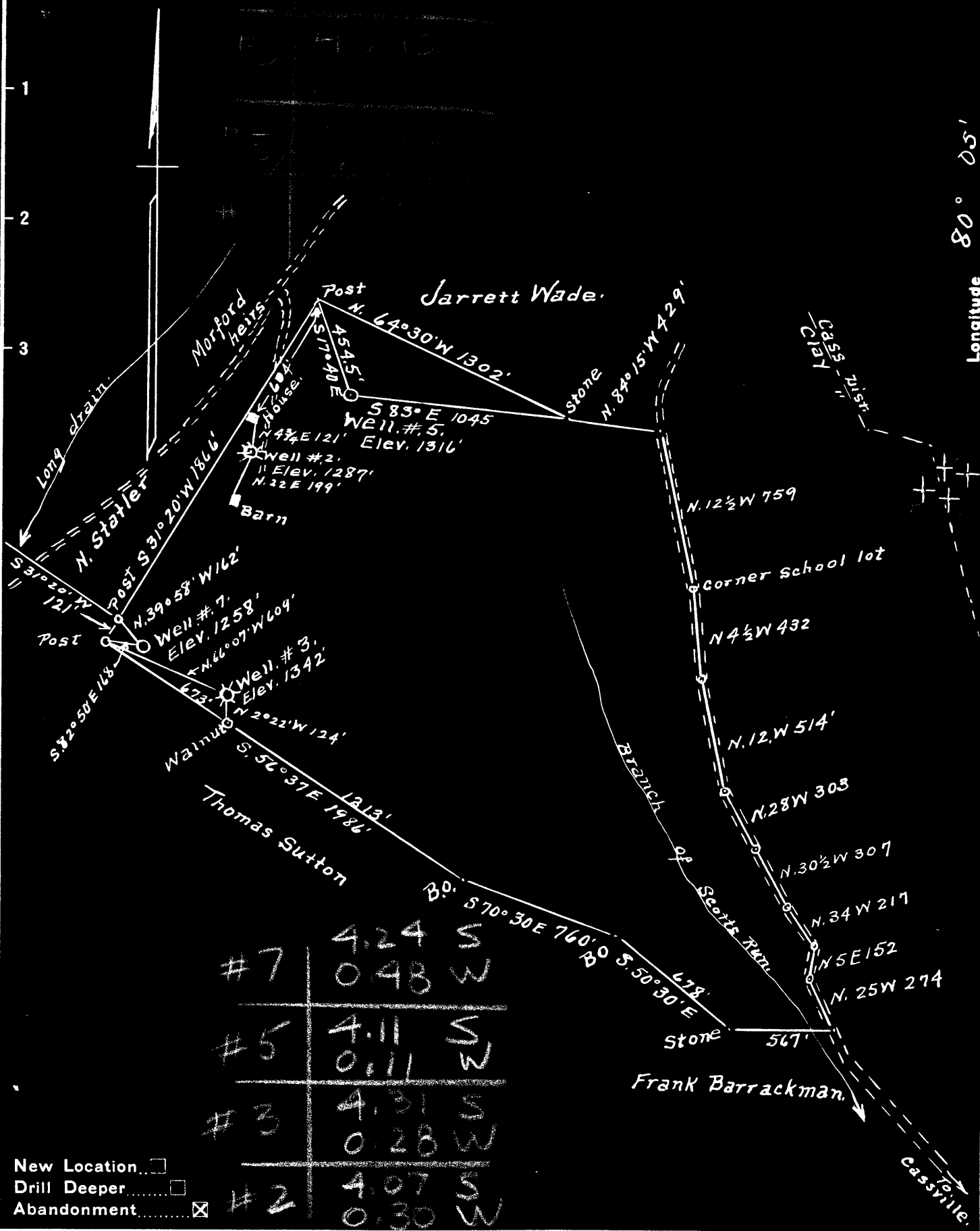


Latitude 39° 45'

Longitude 80° 05'



New Location   
 Drill Deeper   
 Abandonment

Company Washington Oil Co  
 Address Core, W.Va.  
 Farm C.C. Core  
 Tract ONE Acres 129+ Lease No. NC  
 Well (Farm) No. 2-3-5&7 Serial No. NC  
 Elevation (Spirit Level) #2=1287' #5=1316'  
 #3=1342' #7=1258'  
 Quadrangle Blacksville W.Va.  
 County Monongalia District Clay & Cass  
 Engineer H.L. Headley  
 Engineer's Registration No. \_\_\_\_\_  
 File No. \_\_\_\_\_ Drawing No. \_\_\_\_\_  
 Date 7-5-1948 Scale 1" = 600'

STATE OF WEST VIRGINIA  
 DEPARTMENT OF MINES  
 OIL AND GAS DIVISION  
 CHARLESTON

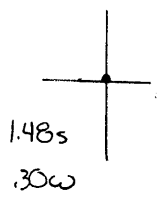
**WELL LOCATION MAP**  
 MON-415-A-#7  
 FILE NO. MON-416-A-#5  
 MON-417-A-#3  
 MON-418-A-#2

+ Denotes location of well on United States Topographic Maps, scale 1 to 62,500, latitude and longitude lines being represented by border lines as shown.

- Denotes one inch spaces on border line of original tracing.

39°42'30"

Latitude



Longitude

Oil well  
 completed 1908  
 Total depth 2209'  
 plugged 10-27-48

Topo Location

7.5' Loc. \_\_\_\_\_ 15' Loc. \_\_\_\_\_  
 \_\_\_\_\_ (calc.) \_\_\_\_\_

Company Washington O Co  
 Farm CC Case # 7  
 15' Quad \_\_\_\_\_  
 (sec.)  
 7.5' Quad Osage  
 District Clay

**WELL LOCATION PLAT**

County 061 Permit 30415

C. C. CORE NO. 7 WELL.

Cass District, Monongalia County, W. Va.

By Washington Oil Co., Core, W. Va.

Abandoned under permit Mon-~~3300~~-A? 415A

On 167.24 acres, on Dells Run.

Elevation, 1258' L.

Surface owned by George Statler, Core, W. Va., and minerals by  
C. C. Core Heirs.

Drilling commenced Nov. 7, 1907; completed Jan. 1, 1908.

Shot May 3, 1910, with 15 qts. nitroglycerine.

Salt water at 2182'.

10" casing, 810'; 8 $\frac{1}{4}$ " tubing, 1665'; 6 $\frac{5}{8}$ " tubing, 1846'; 5 $\frac{3}{8}$ " tubing, 243' (setter--liner);  
3 $\frac{1}{2}$ " tubing, 1852'.

B. H. packer.

Coal was encountered at 694-701 and 776-782'.

Oil well. Abandonment reported to Dept. of Mines Aug. 30, 1948.

Record to RCT from Mrs. Griffith Jan. 22, 1949. Old File No. 462.

	Top.	Bottom.
Coal, black, soft	694	701
Coal, black, soft	776	782
Sand, gray, hard	1568	....
Sand, gray, hard, Big Injun (oil and salt water, 2182')	2080	2209
Total depth		2209



STATE OF WEST VIRGINIA  
DEPARTMENT OF MINES  
OIL AND GAS DIVISION

462

Permit No. 415-A

WELL RECORD

Oil or Gas Well Oil  
(KIND)

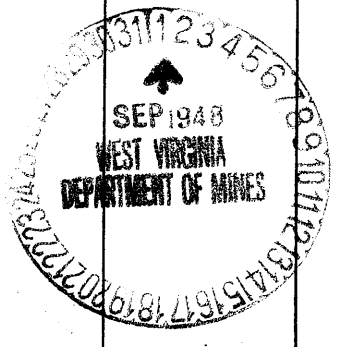
Company Washington Oil Company  
 Address Core, West Virginia  
 Farm C.C. Core Acres 167.24  
 Location (waters) Dolls Run  
 Well No. 7 Elev. 1258'  
 District Cass County Monongalia  
 The surface of tract is owned in fee by George Statler  
 Address Core, W.Va.  
 Mineral rights are owned by C.C. Core, Heirs  
 Address \_\_\_\_\_  
 Drilling commenced Nov. 7, 1907  
 Drilling completed Jan. 1, 1908  
 Date Shot 5/3/10 From \_\_\_\_\_ To \_\_\_\_\_  
 With 16 qts. Nitro Glycerine  
 Open Flow \_\_\_\_\_ /10ths Water in \_\_\_\_\_ Inch  
 \_\_\_\_\_ /10ths Merc. in \_\_\_\_\_ Inch  
 Volume \_\_\_\_\_ Cu. Ft.  
 Rock Pressure \_\_\_\_\_ lbs. \_\_\_\_\_ hrs.  
 Oil \_\_\_\_\_ bbls., 1st 24 hrs.  
 Fresh water \_\_\_\_\_ feet \_\_\_\_\_ feet  
 Salt water 2182 feet \_\_\_\_\_ feet

Casing and Tubing	Used in Drilling	Left in Well	Packers
Size			
16			Kind of Packer
13			
10	810		Size of
8 1/4	1565		
6 5/8	1846	1846	Depth set
5 3/16	242	242	Perf. top <u>D.H.</u>
3 1/2	1852	1852	Perf. bottom
2			Perf. top
Liners Used			Perf. bottom

CASING CEMENTED \_\_\_\_\_ SIZE \_\_\_\_\_ No. Ft. \_\_\_\_\_ Dat \_\_\_\_\_

COAL WAS ENCOUNTERED AT 694 FEET \_\_\_\_\_ INCHES  
776 FEET \_\_\_\_\_ INCHES FEET \_\_\_\_\_ INCHES  
 FEET \_\_\_\_\_ INCHES FEET \_\_\_\_\_ INCHES

Formation	Color	Hard or Soft	Top	Bottom	Oil, Gas or Water	Depth Found	Remarks
Coal	Black	Soft	694	701			
Coal	Black	Soft	776	782			
Sand	Gray	Hard	1568				
Sand <i>bg</i>	Gray	Hard	2080	2209	Oil & Salt Water	2182	



Formation	Color	Hard or Soft	Top	Bottom	Oil, Gas or Water	Depth Found	Remarks

Date August 30, 1948

APPROVED Washington Oil Co, Owner

By Willis C. Post Freeman  
(Title)