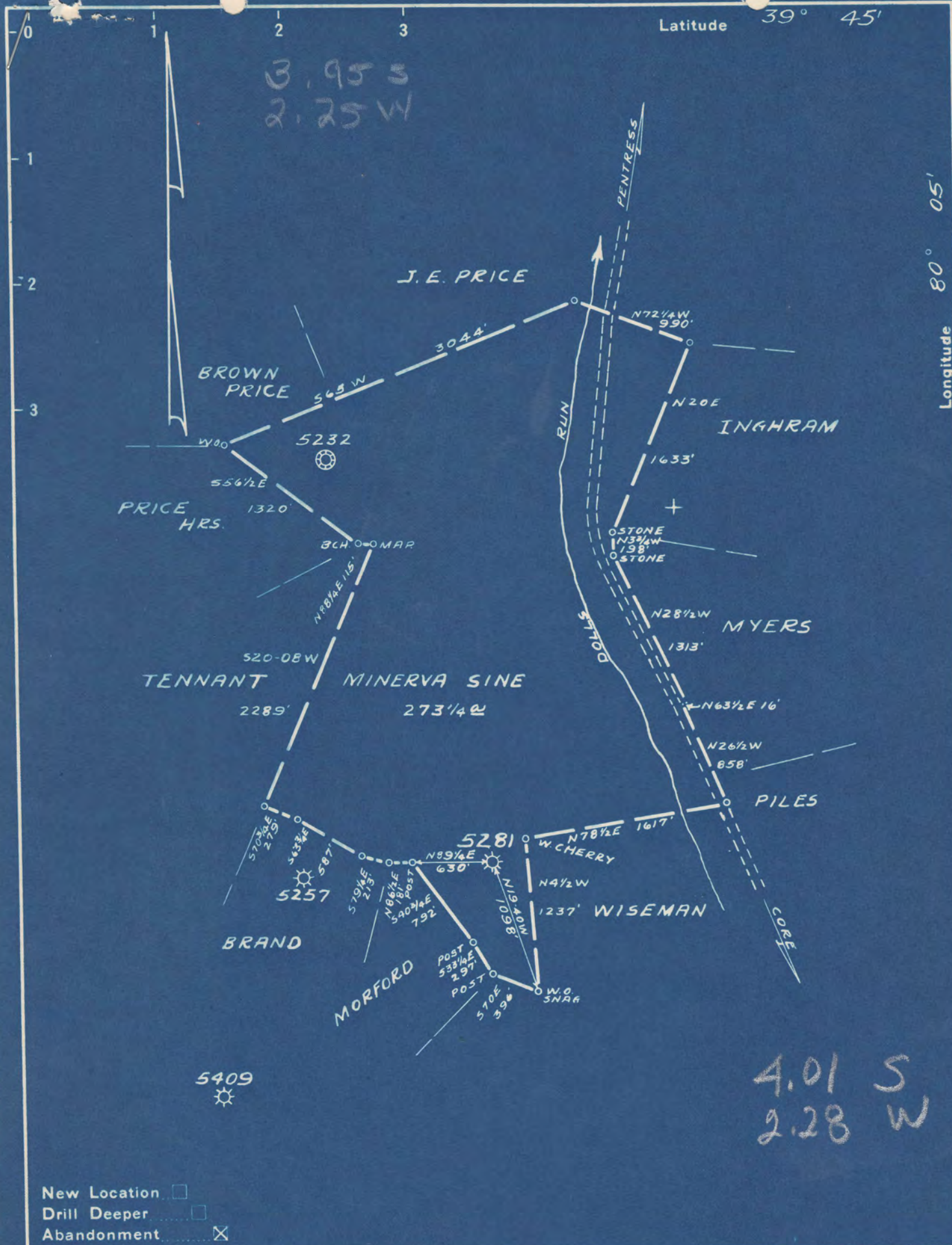


Latitude 39° 45'

Longitude 80° 05'

3.95 S
2.25 W

4.01 S
2.28 W



New Location

Drill Deeper

Abandonment

Company PITTSBURGH E. W. VA. GAS CO.

Address CLARKSBURG, W. VA.

Farm MINERVA SINE

Tract _____ Acres 300 Lease No. 15298

Well (Farm) No. TWO Serial No. 5281

Elevation (Spirit Level) 1351'

Quadrangle BLACKSVILLE N.E. 13

County MONONGALIA District CLAY

Engineer Keynith B. Moore

Approved by [Signature]

Engineer's Registration No. 764

File No. V160 P35 Drawing No. _____

Date SEPT 16, 1948 Scale 1" = 1000'

STATE OF WEST VIRGINIA
DEPARTMENT OF MINES
OIL AND GAS DIVISION
CHARLESTON

WELL LOCATION MAP
FILE NO. MON-424-A

+ Denotes location of well on United States Topographic Maps, scale 1 to 62,500, latitude and longitude lines being represented by border lines as shown.

- Denotes one inch spaces on border line of original tracing.

MINERVA SINE NO. 5281 WELL.

Clay District, Monongalia County, W. Va.
 By Pittsburgh & W. Va. Gas Co., Clarksburg, W. Va.
 Abandoned under permit Mon-.....-A7
 On 300 acres; Blacksville N/E 1-3.
 Elevation, 1351' L.

Surfaces owned by H. Y. Meyers, Avella, Pa., and minerals by N. J. Myers et al., Avella, Pa.

Drilling commenced Nov. 15, 1918; completed Feb. 26, 1919.
 10" casing, 830' (pulled); 8 1/2", 1592'; 6 3/4", 1850'; 5", 2907'; all left in
 Coal was encountered at 465-470, 730-736, and 810-818'.

Gas well. Abandonment reported to Dept. of Mines Aug. 30, 1948.

Record to RCT from Mrs. Griffith Jan. 5, 1949. Old file No. 453.

	Top.	Bottom.
Unrecorded	0	410
Bluff Sand	410	450
Unrecorded	450	465
Coal	465	470
Slate, dark, soft	470	550
Lime, light, hard	550	730
Mapletown (Sewickley) Coal,	730	736
Lime, light, hard	736	810
Pittsburgh Coal, soft	810	818
Sand, light, hard	818	855
Slate, blue, soft	855	880
Lime, white, hard	880	950
Slate, dark, soft	950	1030
Sand, dark, hard	1030	1055
Slate, blue, soft	1055	1160
Sand, white, hard	1160	1175
Slate, light, soft	1175	1220
Sand, light, hard	1220	1250
Slate	1250	1300
Lime	1300	1340
Slate, dark, soft	1340	1480
Lime, dark, hard	1480	1535
Slate, dark, soft	1535	1545
Sand, dark, hard	1545	1560
Slate, dark, soft	1560	1580
Sand, dark, hard	1580	1592
Slate, dark, soft	1592	1605
Sand, light, soft	1605	1655
Sand, dark, hard (water, 1675')	1655	1708
Slate, dark, soft	1708	1723
Sand, light, hard	1723	1850
Slate, dark, soft	1850	1865
Lime, dark, hard	1865	1885
Lime, white, hard	1885	1895
Slate, white, soft	1895	1920
Lime, dark, hard	1920	1960
Slate, dark, soft	1960	1967
Lime	1967	1980
Red rock	1980	1990
Slate	1990	1998
Little Lime	1998	2010
Pencil Cave	2010	2016
Big Lime	2016	2052

(OVER)

MINERVA SINE NO. 5281 WELL (Continued).

	Top.	Bottom.
Big Injun Sand	2052	- 2240
Slate and shells	2240	- 2310
Sand	2310	- 2345
Slate and shell	2345	- 2638
Gantz Sand (show gas, 2640')	2638	- 2675
Slate	2675	- 2690
50-Ft. Sand	2690	- 2755
Slate	2755	- 2760
Sand	2760	- 2775
Red rock and shells	2775	- 2800
Sand	2800	- 2812
Red rock and shells	2812	- 2905
Gordon Stray Sand	2905	- 2924
Red rock shells	2924	- 3020
Gordon Sand	3020	- 3060
Slate and shells, red	3060	- 3085
4th Sand	3085	- 3102
Slate	3102	- 3164
5th Sand	3164	- 3184
Slate and shells	3184	- 3198
Bayard Sand (gas, 3200')	3198	- 3218
Unrecorded	3218	- 3230 $\frac{1}{2}$
Total depth		3230 $\frac{1}{2}$



STATE OF WEST VIRGINIA DEPARTMENT OF MINES OIL AND GAS DIVISION

453

WELL RECORD

Permit No. 424-A

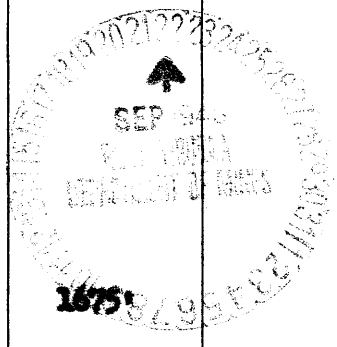
Oil or Gas Well "GAS" (KIND)

Company Pittsburgh & West Va Gas Company. Address Clarkburg, West Va. Farm Minerva Mine Acres 300 Location (waters) Blacksville Mine No. 1-3 Well No. 2881 Elev. 1951' District Clay County Monongalia The surface of tract is owned in fee by H. Y. Myers Address Avella, Penna. Mineral rights are owned by H. J. Myers et al. Address Avella, Penna., November 19, 1918 Drilling commenced February 26, 1919 Drilling completed Date Shot From To With Open Flow /10ths Water in Inch /10ths Merc. in Inch Volume Cu. Ft. Rock Pressure lbs. hrs. Oil bbls., 1st 24 hrs. Fresh water feet feet Salt water feet feet

Table with columns: Casing and Tubing, Used in Drilling, Left in Well, Packers. Rows include tubing sizes (16, 18, 10, 8 1/4, 6 5/8, 5 3/16, 3, 2) and packer information.

CASING CEMENTED SIZE No. Ft. Date COAL WAS ENCOUNTERED AT 465 FEET 60 INCHES 730 FEET 72 INCHES 810 FEET 96 INCHES

Main well log table with columns: Formation, Color, Hard or Soft, Top, Bottom, Oil, Gas or Water, Depth Found, Remarks. Lists geological layers from un-recorded sand to red rock with depths and hardness.



Formation	Color	Hard or Soft	Top	Bottom	Oil, Gas or Water	Depth Found	Remarks
Slate			1990	1998			
Little Lime			1998	2010			
Pencil Cove			2010	2016			
Big Lime			2016	2052			
Big Injan			2052	2210			
Slate&Shells			2210	2310			
Sand			2310	2345			
Slate&Shell			2345	2638			
Gentle Sand			2638	2675	Sh. Gas	2640'	
Slate			2675	2690			
50 Ft. Sand			2690	2755			
Slate			2755	2760			
Sand			2760	2775			
Red Rock & Shells			2775	2800			
Sand			2800	2812			
Red Rock & Shells			2812	2905			
Gordon Stray			2905	2924			
Red Rock Shells			2924	3020			
Gordon Sand			3020	3060			
Slate&Shells	Red		3060	3085			
4th. Sand			3085	3122			
Slate			3122	3164			
5th. Sand			3164	3184			
Slate&Shells			3184	3198			
Hard Sand			3198	3218	Gas	3200'	
Un-recorded			3218	3230-1/2			
Total depth.....				3230-1/2'			

August 30th, 1948

Date _____, 19____
PITTSBURGH & WEST VA GAS COMPANY.

APPROVED _____ Owner
 By W. M. Hester
 (Title)

Record of Well No. 5281

Located on *Minerva Sineetal* Farm June 26 1918

Clay

District *Monongalia*

County *W. Va.*

State

Division *10"*

District No. *11*

Drilled under Well Order *1294*

Rig built by *John Craig*

Began *Aug. 22*

1918

Completed *Aug. 28*

1918

Well drilled by *H. S. Snyder*

Began *Nov. 15*

1918

Completed *Feb. 26*

1918

Depth of Well *3230 1/2* feet

Size of Hole *5 1/16*

Producing *Sas.*

Elev: *1351*

CASED WITH

REMARKS

AMOUNT	SIZE	KIND
16'	13"	Wood
830'	10"	New
1592'	8 1/4"	New
1850'	6 7/8"	Old
2907'	5 1/2"	Old
3231'	2"	

COAL VEINS *Mapletown 730* *Pgh. 810* *Fairview 465*
736 *818* *470*

FORMATIONS

NAME	TOP	BOTTOM	OIL	GAS	WATER	REMARKS
<i>Bluff sand</i>	<i>410</i>	<i>450</i>				
<i>sand</i>	<i>818</i>	<i>858</i>				
<i>sand</i>	<i>1050</i>	<i>1058</i>				
<i>Little blunhard</i>	<i>1160</i>	<i>1175</i>				
<i>sand</i>	<i>1220</i>	<i>1250</i>				
<i>sand</i>	<i>1545</i>	<i>1560</i>				
<i>Int. salt sand</i>	<i>1605</i>	<i>1622</i>				
<i>Ind. salt sand</i>	<i>1605</i>	<i>1855</i>			<i>1675</i>	<i>740 full</i>
<i>Little lime</i>	<i>1998</i>	<i>2010</i>				
<i>Big lime</i>	<i>2052</i>	<i>2052</i>				
<i>Big sand</i>	<i>2052</i>	<i>2340</i>			<i>2165</i>	<i>show</i>
<i>Squaw sand</i>	<i>2310</i>	<i>2345</i>				
<i>Coaly sand</i>	<i>2638</i>	<i>2675</i>				
<i>Fifty foot</i>	<i>2670</i>	<i>2765</i>				
<i>Thirty foot</i>	<i>2800</i>	<i>2812</i>				
<i>Gordon clay</i>	<i>2905</i>	<i>2924</i>				
<i>Gordon sand</i>	<i>3020</i>	<i>3060</i>				
<i>Fourth sand</i>	<i>3085</i>	<i>3102</i>				
<i>sand</i>	<i>3154</i>	<i>3184</i>				
<i>Keyard sand</i>	<i>3198</i>	<i>3218</i>			<i>3167</i> <i>3200</i>	<i>show</i> <i>1425'</i> <i>190 Mcf</i>

FIRST PRESSURE TEST IN *2 1/2"* CASING

REMARKS

30 Sec. 2 lbs.
 1 Min. 4 "
 2 " 8 "
 5 " 19 "
 10 " 36 "
~~20~~ " 70 "
 30 " 106 "

60 " 188 "
 Rock Pressure 525-15 hrs. in

Taken Feb. 26-1919. 19

By

WELL TUBED AND PACKED *Max. 1* 1919.

VIZ:- 167 fts. 3231 ft. 2"
 1-5 1/2 X 3" Anchor Packer.
 6 fts 65 ft. of anchor.
 1-2" R. & L.

FIRST PRESSURE TEST IN *2"* TUBING

REMARKS

30 Sec. 18 lbs.
 1 Min. 30 "
 2 " 51 "
 5 " 108 "
 10 " 190 "
~~20~~ " 285 "
 30 " 345 "

60 " 410 "
 Rock Pressure 475-36 hrs. in

510-48 hrs.
 Taken Mar. 1-1919. 19

By

MATERIAL FOR THIS WELL RECEIVED FROM FOLLOWING SOURCES:

6000 ft. Lumber, rig iron and rig timbers old from Well 5232
 1 Par. set rig timbers new \$17.00 Mrs. Minerva Line
 6479 ft. Lumber new @ \$35.00 191.77 J. J. Tennant
 500 lbs. Nails \$ Stock
 700 ft. Lumber new @ \$33.00 231.00 J. J. Tennant