

LATITUDE 39°42'30"

75'
+
70344

90°20'30"

LONGITUDE

7'5 OGIS topo location

7.5' loc	<u>0.245</u>	15' loc	<u>3.125</u>
	<u>0.370</u>	(calc.)	<u>2.590</u>

#258 in 1912 Co Rpt

Company WV T&E

Farm Geo. Weaver 1

Quad Osage (Belle Me)

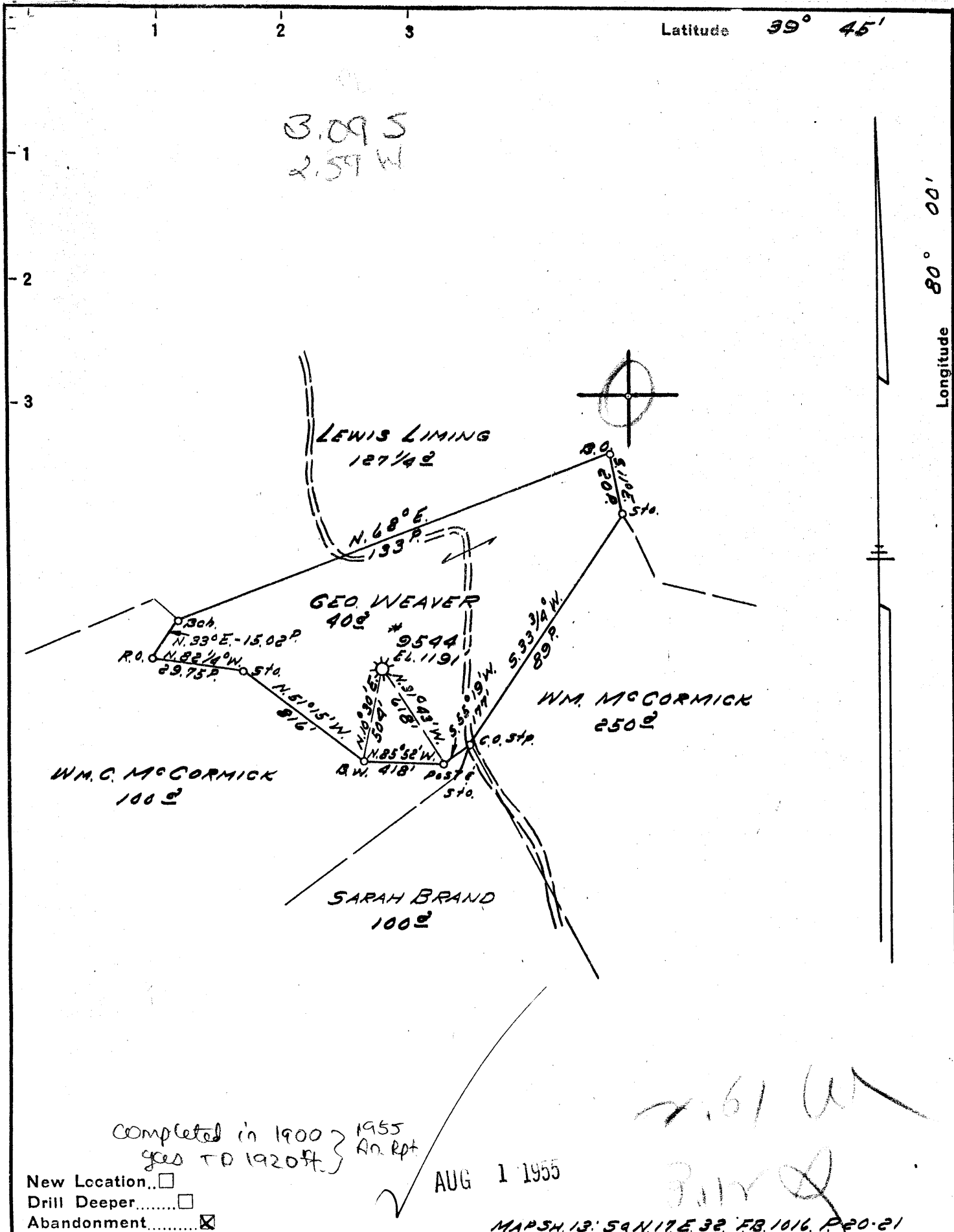
County Monmouth

District Cast

WELL LOCATION MAP

File No. 061-70344

row 590 A



Completed in 1900 } 1955
 goes to 1920 ft } No. Rpt

New Location...
 Drill Deeper.....
 Abandonment.....

AUG 1 1955

MARSH. 13. 54 N. 17. E. 32. FB. 1016. P. 20-21

Company HOPE NATURAL GAS CO.
 Address CLARKSBURG, W.VA.
 Farm GEORGE WEAVER
 Tract _____ Acres 40 Lease No. 61847
 Well (Farm) No. _____ Serial No. 9544
 Elevation (Spirit Level) 1191'
 Quadrangle BLACKSVILLE
 County MONONGALIA District CASS
 Engineer W.M. Weaver
 Engineer's Registration No. 900
 File No. _____ Drawing No. _____
 Date 7-7-55 Scale 1"=40'

STATE OF WEST VIRGINIA
 DEPARTMENT OF MINES
 OIL AND GAS DIVISION
 CHARLESTON

Plugging Cancelled - 1955 Annual
WELL LOCATION MAP Report
 FILE NO. MON-590-A Dept. of
 Mines
 Table 6

* 258 on Co. Report, map was 70344

+ Denotes location of well on United States Topographic Maps, scale 1 to 62,500, latitude and longitude lines being represented by border lines as shown.

- Denotes one inch spaces on border line of original tracing.