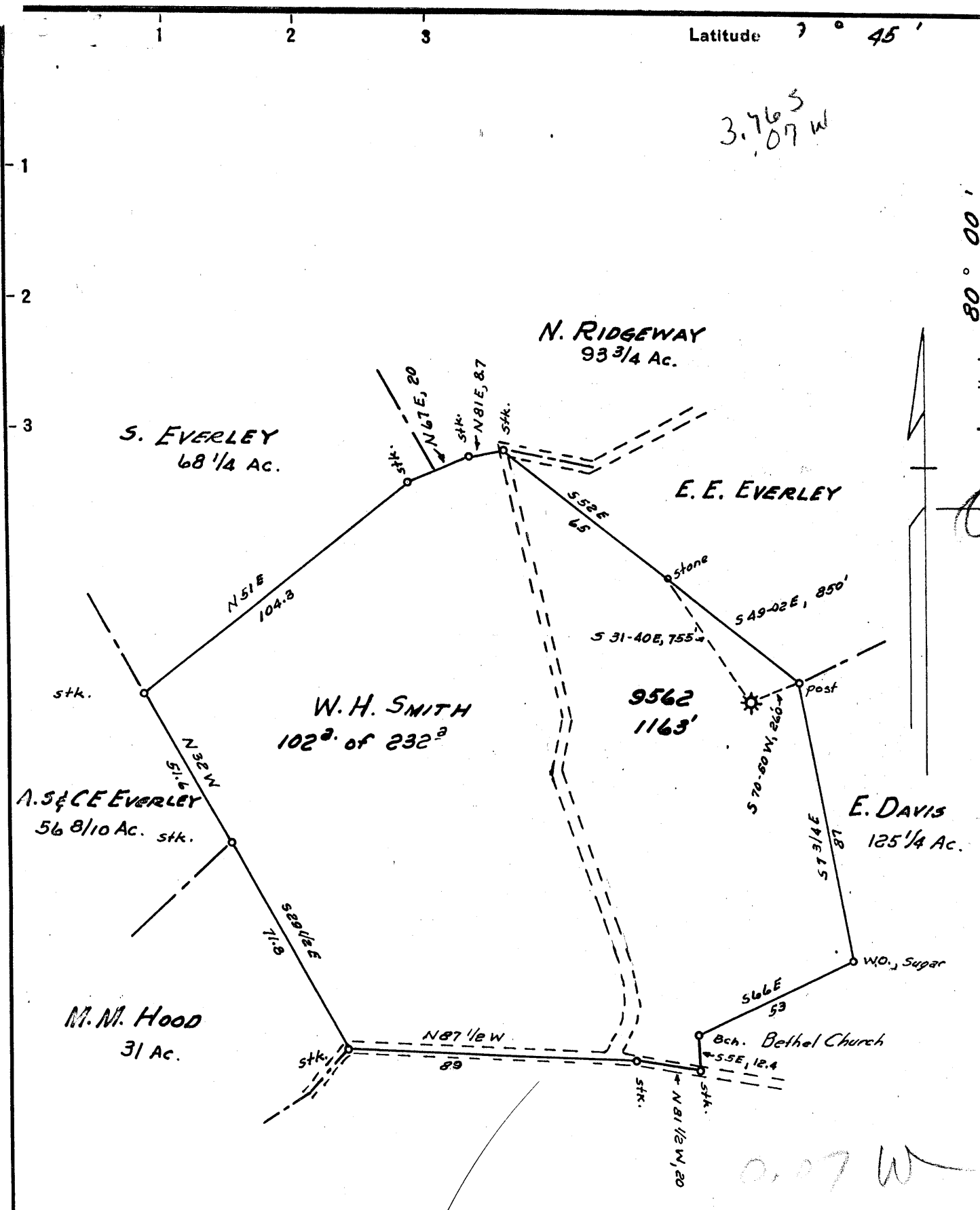


Latitude 7° 45'

3.765  
07 W

Longitude 80° 00'



- New Location...
- Drill Deeper.....
- Abandonment.....

MAR. 6 1956

Map Sh. 13 N16, E3A FB. 1049, p. 8, 9, 10

0.07 W  
3.08

Company HOPE NATURAL GAS CO.  
 Address CLARKSBURG, W. VA.  
 Farm W. H. SMITH  
 Tract \_\_\_\_\_ Acres 232 Lease No. 61863  
 Well (Farm) No. \_\_\_\_\_ Serial No. 9562  
 Elevation (Spirit Level) 1163'  
 Quadrangle BLACKSVILLE  
 County MONONGALIA District CASS  
 Engineer Guy H. Bradley  
 Engineer's Registration No. 2425  
 File No. \_\_\_\_\_ Drawing No. \_\_\_\_\_  
 Date JULY 18, 1955 Scale 1" = 40p.

STATE OF WEST VIRGINIA  
 DEPARTMENT OF MINES  
 OIL AND GAS DIVISION  
 CHARLESTON

WELL LOCATION MAP  
 FILE NO. MON-595-A

- + Denotes location of well on United States Topographic Maps, scale 1 to 62,500, latitude and longitude lines being represented by border lines as shown.
- Denotes one inch spaces on border line of original tracing.

W. H. SMITH No. 9562 - HOPE N. G. Co., - MON-595-A



STATE OF WEST VIRGINIA  
DEPARTMENT OF MINES  
OIL AND GAS DIVISION

645

Quadrangle Blacksville  
Permit No. 595-A

WELL RECORD

Oil or Gas Well Gas  
(KIND)

Company Hope Natural Gas Company  
Address 445 West Main Street, Clarksburg, W. Va.  
Farm W. H. Smith Acres 232  
Location (waters) \_\_\_\_\_  
Well No. 9562 Elev. 1163'  
District Cass County Monongalia  
The surface of tract is owned in fee by \_\_\_\_\_  
Address \_\_\_\_\_  
Mineral rights are owned by \_\_\_\_\_  
Address \_\_\_\_\_  
Drilling commenced March 4, 1911  
Drilling completed April 22, 1911  
Date Shot No record From \_\_\_\_\_ To \_\_\_\_\_  
With \_\_\_\_\_  
Open Flow \_\_\_\_\_ /10ths Water in \_\_\_\_\_ Inch  
\_\_\_\_\_ /10ths Merc. in \_\_\_\_\_ Inch  
Volume \_\_\_\_\_ Cu. Ft.  
Rock Pressure \_\_\_\_\_ lbs. \_\_\_\_\_ hrs.  
Oil None \_\_\_\_\_ bbls., 1st 24 hrs.  
Fresh water Water 1000' feet \_\_\_\_\_ feet  
Salt water 1223' feet \_\_\_\_\_ feet

Casing and Tubing	Used in Drilling	Left in Well	Packers
Size			
16			Kind of Packer
13			
10			Size of
8 1/4			
6 1/2			Depth set
5 3/16	<u>1605'</u>	<u>1605'</u>	
3			Perf. top
2	<u>1504'</u>	<u>1504'</u>	Perf. bottom
Liners Used			Perf. top
			Perf. bottom

CASING CEMENTED \_\_\_\_\_ SIZE \_\_\_\_\_ No. Ft. \_\_\_\_\_ Date \_\_\_\_\_  
No record

COAL WAS ENCOUNTERED AT 190 FEET 60 INCHES  
296 FEET 132 INCHES 966 FEET 72 INCHES  
998 FEET 60 INCHES FEET INCHES

Formation	Color	Hard or Soft	Top	Bottom	Oil, Gas or Water	Depth Found	Remarks
Mapletown Coal			190	195			
Pittsburgh Coal			296	307			
Little Dunkard			790	820			
Big Dunkard			820	915			
Freeport Coal			966	972			
Coal			998	1003	Water in coal		
Gas Sand			1046	1077			
Big Line			1529	1604	Water	1223'	
Big Injun			1604	1748	Gas	1627' & 1711' & 1717'	
Total Depth				1748'			



February 14, 1956

Hope Natural Gas Company  
B. R. NUZUM  
General Superintendent  
By Gaily

JUNE 21 1956