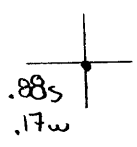


39°37'30"

Latitude

90°15'00"



Longitude

**Topo Location**

7.5' Loc. \_\_\_\_\_ 15' Loc. \_\_\_\_\_  
 \_\_\_\_\_ (calc.) \_\_\_\_\_

**Company** Kenneth P. Mulliken

**Farm** M4 Haught #3

**15' Quad** \_\_\_\_\_  
(sec.)

**7.5' Quad** Mammington

**District** Clay

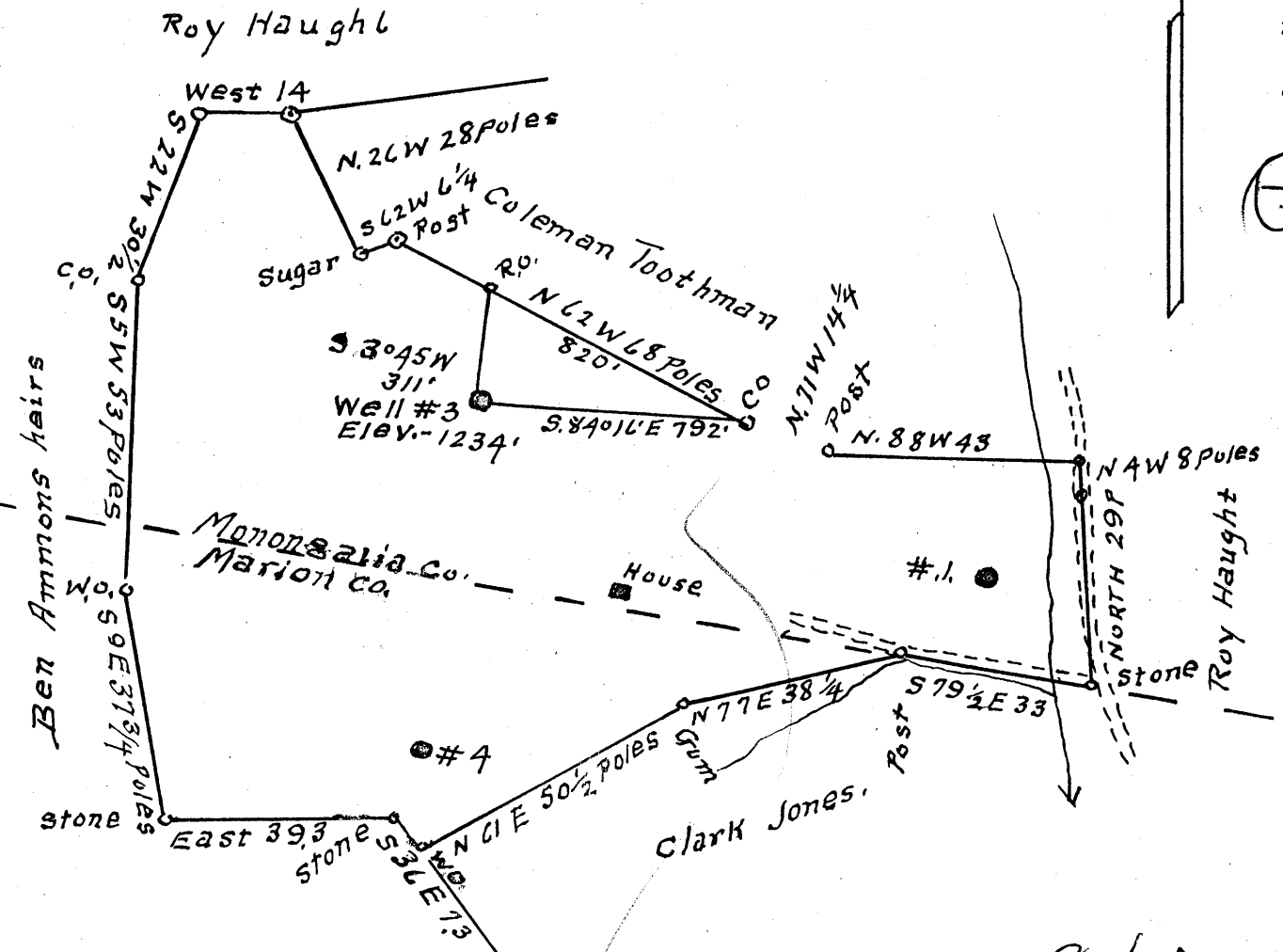
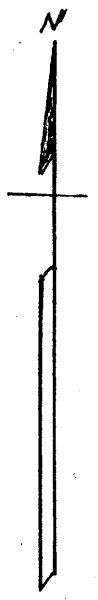
**WELL LOCATION PLAT**

**County** 061 **Permit** 30612

Latitude 39° 40'

3.81 S  
.07 W

Longitude 80° 15'



0.08 W  
3.87 S

Surface = M.L. Haught heirs  
 % Roy Haught Fairview W, Va.  
 Coal = Eastern Gas & Fuel Associates  
 Grant Town, W, Va.  
 DEC 24 1957

New Location...   
 Drill Deeper.....   
 Abandonment.....

Company Kenneth P. Milliken  
 Address Waynesburg Pa  
 Farm M.L. Haught  
 Tract 1 Acres 70 Lease No. \_\_\_\_\_  
 Well (Farm) No. 3 Serial No. \_\_\_\_\_  
 Elevation (Spirit Level) 1234'  
 Quadrangle Mannington  
 County Monongalia District Clay  
 Engineer A.L. Headley  
 Engineer's Registration No. 2021  
 File No. \_\_\_\_\_ Drawing No. \_\_\_\_\_  
 Date 11-1-57 Scale 1" = 500'

STATE OF WEST VIRGINIA  
 DEPARTMENT OF MINES  
 OIL AND GAS DIVISION  
 CHARLESTON

**WELL LOCATION MAP**  
 FILE NO. MON-612-A

+ Denotes location of well on United States Topographic Maps, scale 1 to 62,500, latitude and longitude lines being represented by border lines as shown.

- Denotes one inch spaces on border line of original tracing.

M.L. HAUGHT OR 3 - KENNETH P. MILLIKEN - MON-612-A