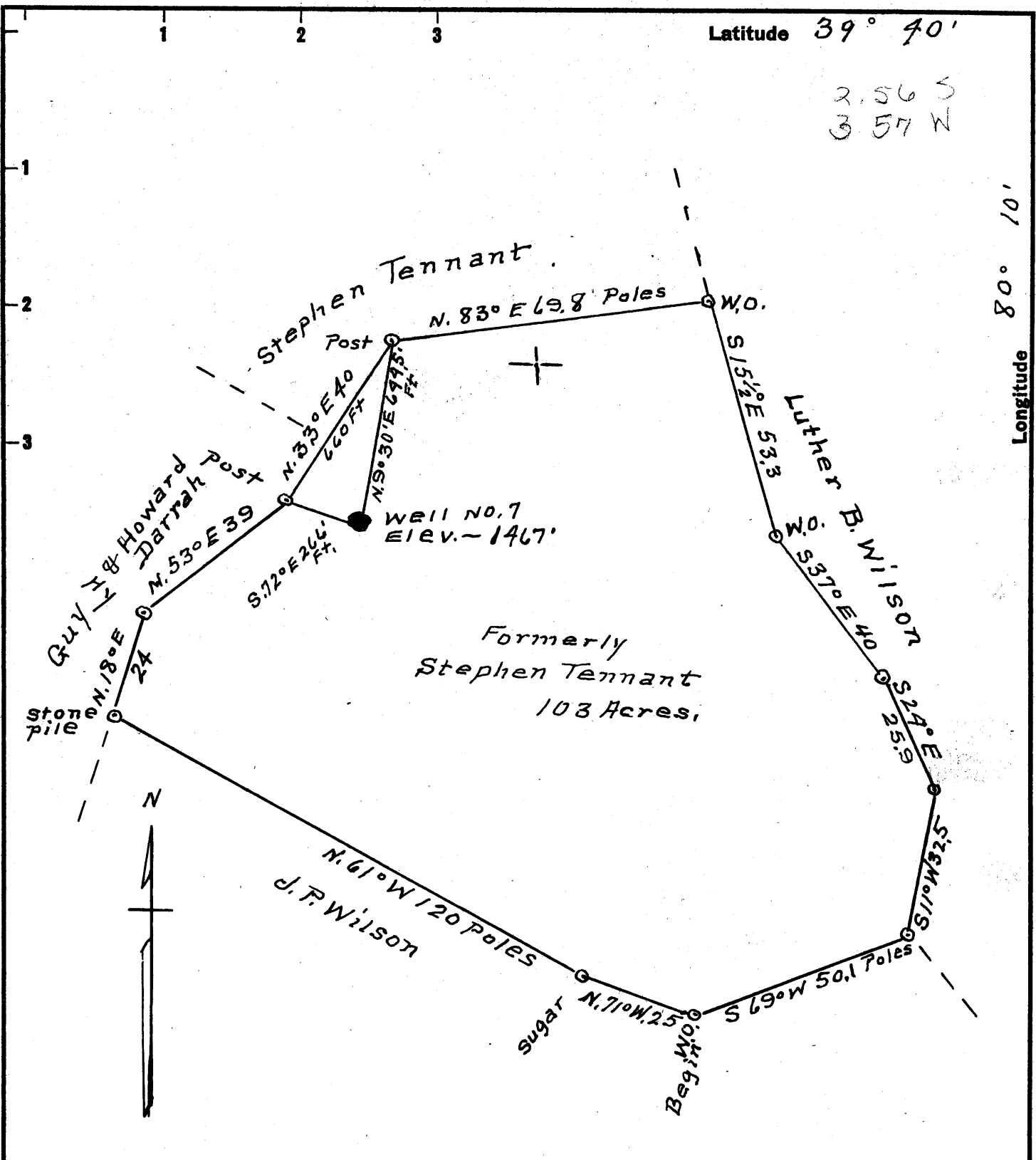


Latitude 39° 40'

2.56 S
3.57 W

Longitude 80° 10'



Formerly
Stephen Tennant
103 Acres.

Coal = Eastern Gas & Fuel Associates
Federal Mine No. 1,
Grant Town, W. Va.
Surface = L. D. Blake
R. #. 2, Fairview, W. Va.

- New Location
- Drill Deeper
- Abandonment

Company George M. Burline
 Address Fairview, W Va
 Farm L. D. Blake
 Tract 1 Acres 103 Lease No. _____
 Well (Farm) No. 7 Serial No. _____
 Elevation (Spirit level) 1467'
 Quadrangle Blacksville
 County Monongalia District clay
 Engineer A. L. Headley
 Engineer's Registration No. 2021
 File No. _____ Drawing No. _____
 Date 5-4-1961 Scale 1" = 495'

STATE OF WEST VIRGINIA
 DEPARTMENT OF MINES
 OIL AND GAS DIVISION
 CHARLESTON

WELL LOCATION MAP
 FILE NO. MON-647-A

+ Denotes location of well on United States Topographic Maps, scale 1 to 62,500, latitude and longitude lines being represented by border lines as shown.

- Denotes one inch spaces on border line of original tracing.