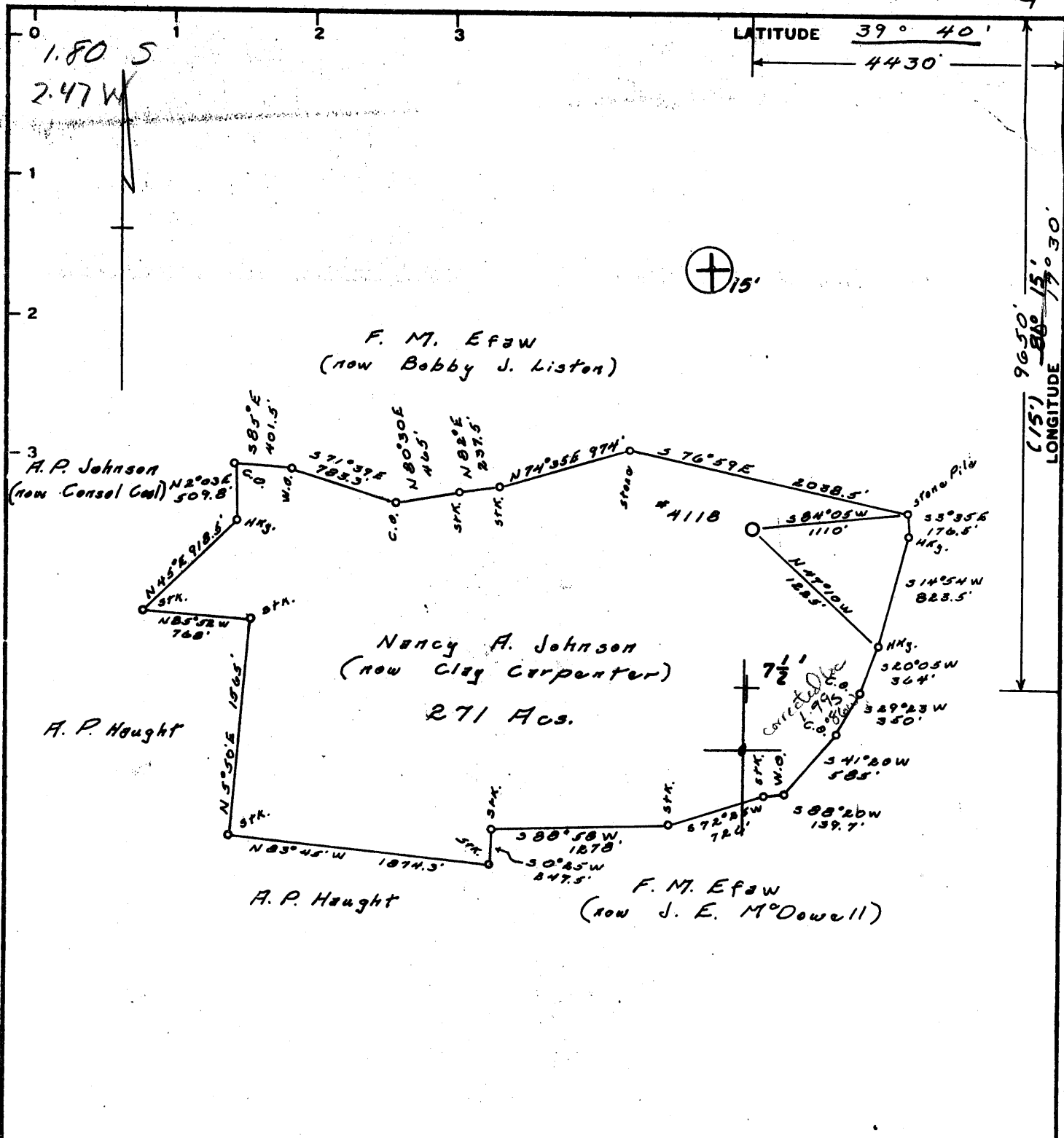


12/10/76 *R*



Minimum Error of Closure 1' in 200'

Source of Elevation Company survey stations tied into U.S.G.S. network.

Fracture

New Location

Drill Deeper

Abandonment  12/10/76

I, the undersigned, hereby certify that this map is correct to the best of my knowledge and belief and shows all the information required by paragraph 6 of the rules and regulations of the oil and gas section of the mining laws of West Virginia.

Signed: *Donald D. Boren*

Map No.

Squares: N S E W

Fairmont Operations  
 Company Consolidation Coal Company  
 Address P. O. Box 1632, Fairmont, W. Va. 26554  
 Farm Nancy A. Johnson (now Clay Carpenter)  
 Tract            Acres 271 Lease No.             
 Well (Farm) No. 4118 Serial No.             
 Elevation (Spirit Level) 1370.3 *EC*  
 Quadrangle Wadestown 7-1/2' Mannington *15'*  
 County Monongalia District Battelle  
 Engineer Donald D. Boren  
 Engineer's Registration No. 2901  
 File No.            Drawing No.             
 Date 12/2/76 Scale 1" = 1000'

STATE OF WEST VIRGINIA  
 DEPARTMENT OF MINES  
 OIL AND GAS DIVISION  
 CHARLESTON

WELL LOCATION MAP  
 FILE NO. **MON-710-A**

+ Denotes location of well on United States Topographic Maps, scale 1 to 62,500, latitude and longitude lines being represented by border lines as shown.  
 - Denotes one inch spaces on border line of original tracing.

**47-061** DEC 20 1976