

Latitude 37° 35'

Longitude 80° 40'

G.F. ELLIS

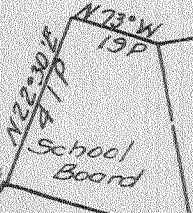
Ada M. Thomas



GREENVILLE

V. M. Shanklin

INDIGO CREEK



stone



Fence Post

S 84° W 40 P

S 1° 15' W 6 P

S 34° E 88 P

W. N. Shanklin

Pence & Garvin

Monroe Co. 1951

0.78 W.
2.91 A

- New Location
- Drill Deeper
- Abandonment

Company Godfrey L. Cabot Inc.
 Address 300 Union Bldg. Charleston W. Va.
 Farm Elizabeth P. Dunlap (Unit No. 57)
 Tract _____ Acres 150 Lease No. 5-239
 Well (Farm) No. 1 Serial No. 1245
 Elevation (Spirit Level) 1581.25
 Quadrangle Alderson
 County Monroe District Springfield
 Engineer Roy Boston
 Engineer's Registration No. _____
 File No. _____ Drawing No. _____
 Date 4-29-47 Scale 1" = 1320'

STATE OF WEST VIRGINIA
 DEPARTMENT OF MINES
 OIL AND GAS DIVISION
 CHARLESTON

WELL LOCATION MAP
 FILE NO. Monroe 2

+ Denotes location of well on United States Topographic Maps, scale 1 to 62,500, latitude and longitude lines being represented by border lines as shown.

- Denotes one inch spaces on border line of original tracing.

WEST VIRGINIA DEPARTMENT OF MINES
OIL & GAS DIVISION
W E L L R E C O R D

Permit No. Monroe 2		Dry Hole
Alderson Quad.		CASING & TUBING
Company	Godfrey L. Cabot, Inc.	
Address	Charleston, W. Va.	16 16 16
Farm	Elizabeth P. Dunlap Acres	13 106 106
Well No.	1-ser. 1245. Elev. 1581	10 613 613
Surface		8 2133 2133
Mineral		
Commenced	June 7, 1947	Not shot
Completed	Aug. 12, 1948	
District	Springfield Monroe County	
Water	20 H.F.; 2018' H.F.	

APR 26 1949

Surface	0	16
Lime	16	1288
Slate	1288	1291
Sand	1291	1310
Lime	1310	1487
Red Rock	1487	1490
Lime	1490	1525
Red Rock	1525	1650
Slate & Shells	1650	1800
Weir Sand	1800	1971
Slate	1971	1982
Lime	1982	2195
Sand	2195	2245
Lime	2245	2522
Slate & Shells	2522	2950
Sandy Lime	2950	2968
Slate & Shells	2968	4262
Lime	4262	4295
Slate & Shells	4295	4358
Lime	4358	4508
Slate & Shells	4508	4511
Lime	4511	4539
Slate & Shells	4539	4732
Lime	4732	5014
Slate & Shells	5014	6344
Total Depth		6344

Small gas 2967

4868 56

Gas 2963 smell
Gas 4868 Light show(exhausted)

NOTE: Bit lost in hole. Not recovered. Hole cemented in attempt to drill by. C.O. to 5815

ELIZABETH P. DUNLAP no. 1245 - G. L. CABOT, INC. - MONROE-2