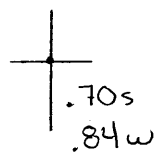


40'10'00"

Latitude



 .70s

 .84w

Longitude

80°40'00"

Topo Location

7.5' Loc. _____ 15' Loc. _____
 _____ (calc.) _____

Company Wm. Park Hickman

Farm R Earl Jones #1

15' Quad _____
(sec.)

7.5' Quad _____

District Richland

WELL LOCATION PLAT

County 069 Permit 14

1 2 3

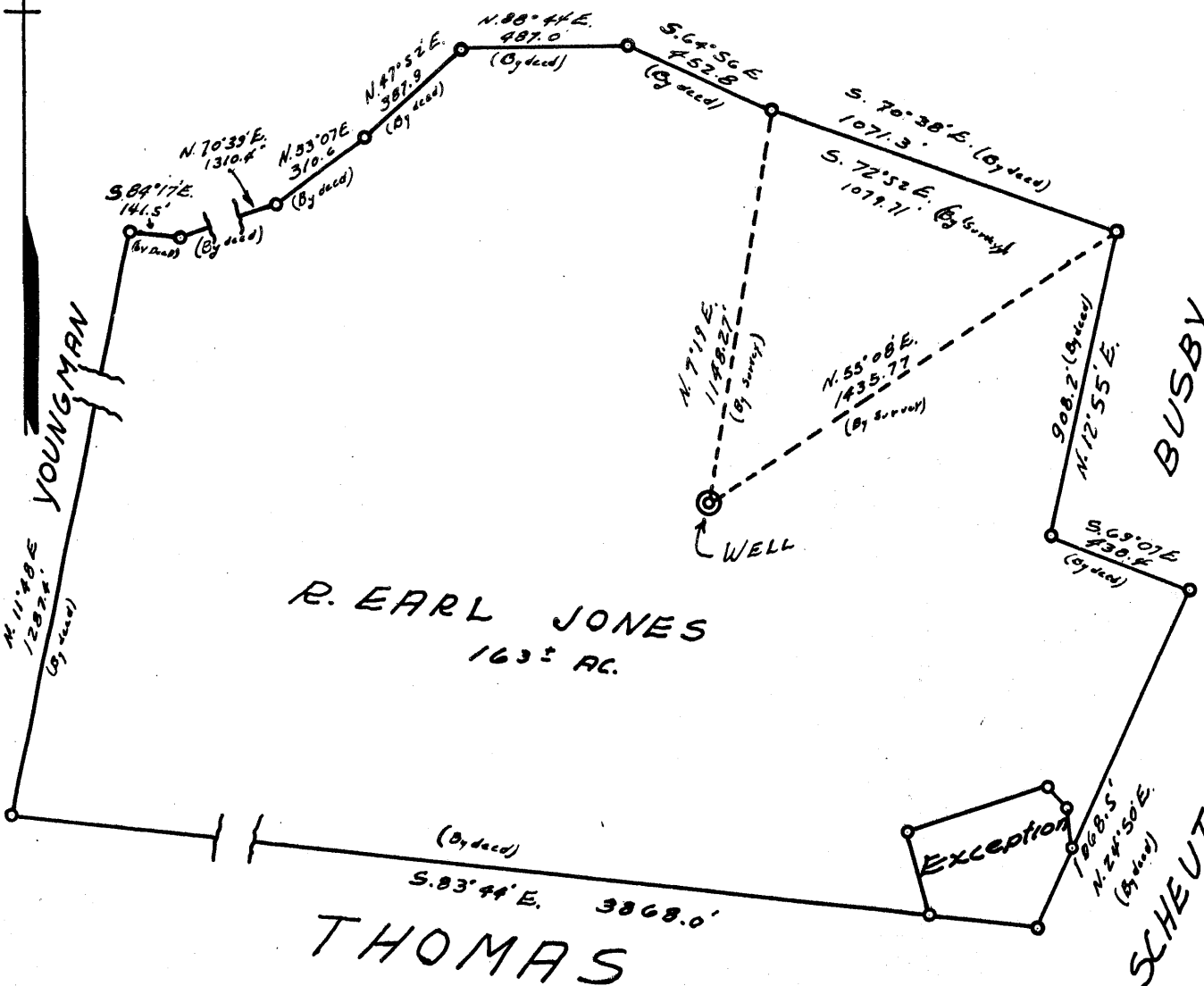
Latitude 40° 10'

0.685
0.84W

+

WEBB

Longitude 80° 40'



- New Location..
- Drill Deeper.....
- Abandonment.....

Company Wm. PARK HICKMAN
 Address RD #1 BRIDGEVILLE PA.
 Farm R. EARL JONES
 Tract 1 Acres 163± Lease No. _____
 Well (Farm) No. 1 Serial No. _____
 Elevation (Spirit Level) 1154
 Quadrangle WHEELING
 County OHIO District RICHLAND
 Engineer N. J. SCHELLHASE
 Engineer's Registration No. 1673
 File No. WAR. GEN. Drawing No. CRESAP FOLDER
 Date AUG. 31, 1955 Scale 1" = 500'

STATE OF WEST VIRGINIA
 DEPARTMENT OF MINES
 OIL AND GAS DIVISION
 CHARLESTON

WELL LOCATION MAP
 FILE NO. OHIO-14

+ Denotes location of well on United States Topographic Maps, scale 1 to 62,500, latitude and longitude lines being represented by border lines as shown.

- Denotes one inch spaces on border line of original tracing.



STATE OF WEST VIRGINIA
DEPARTMENT OF MINES
OIL AND GAS DIVISION

Quadrangle Wheeling

WELL RECORD

Permit No. OHIO - 14

Oil or Gas Well Dry
(KIND)

Company Wm. Park Hickman
Address R. D. # 1, Bridgeville, Penna.
Farm R. Earl Jones Acres 163
Location (waters) Ohio
Well No. 1 Elev. 1154'
District Richland County Ohio
The surface of tract is owned in fee by R. Earl Jones
R.D.# 1 Wheeling, W. Va.
Mineral rights are owned by R. Earl Jones
R.D.# 1, Wheeling, W. Va.
Drilling commenced 5 Sept. 1956
Drilling completed 26 Oct. 1956
Date Shot _____ From _____ To _____
With _____
Open Flow _____ /10ths Water in _____ Inch
_____ /10ths Merc. in _____ Inch
Volume _____ Cu. Ft.
Rock Pressure _____ lbs. _____ hrs.
Oil _____ bbls., 1st 24 hrs.
Fresh water 80 feet 935 feet
Salt water 1260-1445 and feet 1640 feet

Casing and Tubing	Used in Drilling	Left in Well	Packers
Size			
16			Kind of Packer _____
13			
10	11		Size of _____
8 1/2	365		
6 3/4	1284		Depth set _____
5 3/16	1685		
3			Perf. top _____
2			Perf. bottom _____
Liners Used			Perf. top _____
			Perf. bottom _____

CASING CEMENTED _____ SIZE _____ No. Ft. _____ Date _____

COAL WAS ENCOUNTERED AT 935' to 940' FEET INCHES
_____ FEET INCHES FEET INCHES
_____ FEET INCHES FEET INCHES

Formation	Color	Hard or Soft	Top	Bottom	Oil, Gas or Water	Depth Found	Remarks
Lime and shale			0	365	Water	80.	hole full
Lime	grey	hard	365	367			
Shale	grey	soft	367	535			
Sand	dark	soft	535	600			
Red rock		soft	600	635			
Shale	grey	soft	635	645			
Red rock		soft	645	704			
Shale	dark		704	935	Water	935-940	
Coal			935	940			
Shale	grey		940	965			
Sand			965	995			
Shale			995	1025			
Sand	dark	broken	1025	1350	Water	1260-1280	
Big Injun sand	white	hard	1350	1660	gas water water	1445 1445-1460 1640 1640-1660	show
Lime	dark	hard	1660	1677			
Shale	dark		1677	1865			
Lime		hard	1865	1870			
Shale			1870	1950			
Lime		hard	1950	1957			
Shale	dark	soft	1957	1998			
Berea sand	grey	hard	1998	2002			
Shale	dark	soft	2002	2024			
Lime	dark	hard	2024	2033			
Shale	grey	soft	2033	2051			
		Total depth -----		2051			

