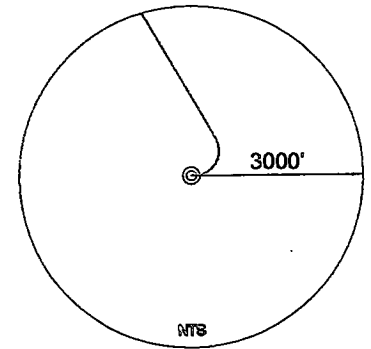
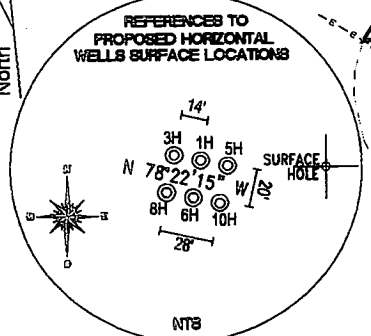
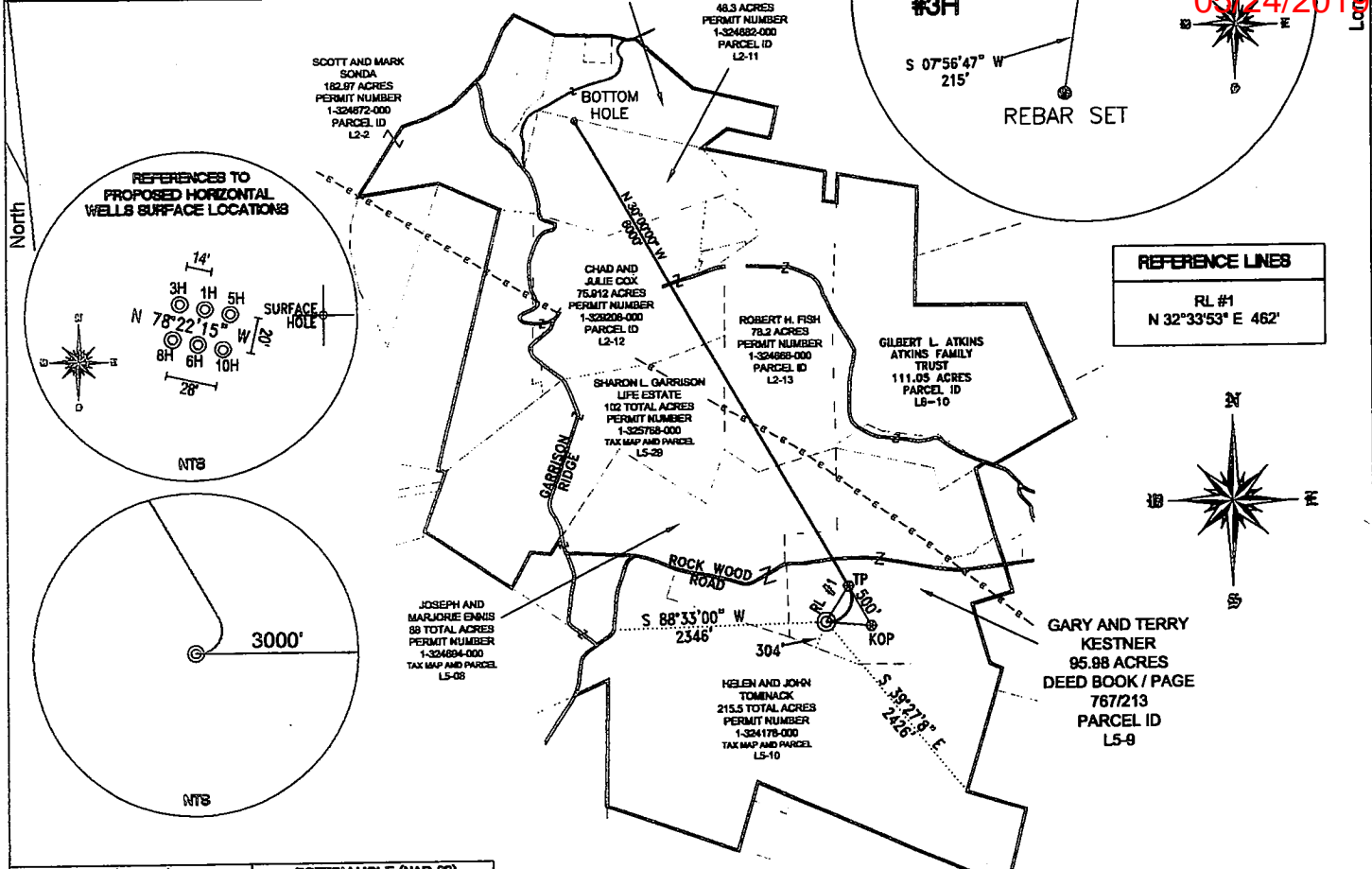


TOP HOLE (NAD 83) N) 602196.3 E) 1677411.8 LAT.) 40°08'55.2" LONG.) 80°32'28.7" DEC. LAT.) 40.148666 DEC. LONG.) 80.541299	KOP (NAD 83) N) 602153.3 E) 1677910.9 LAT.) 40°08'54.8" LONG.) 80°32'22.2" DEC. LAT.) 40.148564 DEC. LONG.) 80.539512
TOP HOLE (NAD 27) N) 602159.2 E) 1708846.0 LAT.) 40°08'54.9" LONG.) 80°32'29.4" DEC. LAT.) 40.148593 DEC. LONG.) 80.541506	KOP (NAD 27) N) 602116.2 E) 1709345.1 LAT.) 40°08'54.6" LONG.) 80°32'23.0" DEC. LAT.) 40.148491 DEC. LONG.) 80.539719



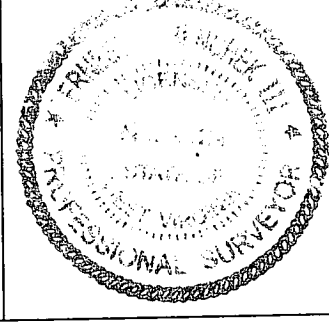
REFERENCE LINES
RL #1 N 32°33'53" E 462'

REFERENCE NOTES
 Boundaries as shown taken from deeds, tax maps and field locations. A full boundary survey is not expressed nor implied. All bearings are based on true north. Ownership taken from public records OHIO County, West Virginia FEBRUARY 2011
 State Plane Coordinates & NAD 83 Lat/Long by differential submeter mapping grade GPS
 Drafted by: E.A.M.

TP (NAD 83) N) 602586.3 E) 1677660.9 LAT.) 40°08'59.1" LONG.) 80°32'25.5" DEC. LAT.) 40.149744 DEC. LONG.) 80.540424	BOTTOM HOLE (NAD 83) N) 607782.5 E) 1674660.9 LAT.) 40°09'50.1" LONG.) 80°33'04.9" DEC. LAT.) 40.163911 DEC. LONG.) 80.551373
TP (NAD 27) N) 602549.2 E) 1709095.1 LAT.) 40°08'58.8" LONG.) 80°32'26.3" DEC. LAT.) 40.149672 DEC. LONG.) 80.540631	BOTTOM HOLE (NAD 27) N) 607745.4 E) 1706095.2 LAT.) 40°09'49.8" LONG.) 80°33'05.7" DEC. LAT.) 40.163839 DEC. LONG.) 80.551579

FILE #: CHE 049
 DRAWING #: 1590
 SCALE: 1" = 2000'
 MINIMUM DEGREE OF ACCURACY: 1/200
 PROVEN SOURCE OF ELEVATION: SUBMETER MAPPING GRADE GPS

I, THE UNDERSIGNED, HEREBY CERTIFY THAT THIS PLAT IS CORRECT TO THE BEST OF MY KNOWLEDGE AND BELIEF AND SHOWS ALL THE INFORMATION REQUIRED BY LAW AND THE REGULATIONS ISSUED AND PRESCRIBED BY THE DEPARTMENT OF ENVIRONMENTAL PROTECTION.
 Signed: *[Signature]*
 L.L.S. #2124 : Ernest J. Benchek III



(+) DENOTES LOCATION OF WELL ON UNITED STATES TOPOGRAPHIC MAPS
 WVDEP OFFICE OF OIL & GAS
 601 57TH STREET
 CHARLESTON, WV 25304

Well Type: Oil Waste Diposal Production Deep Gas Liquid Injection Storage Shallow

WATERSHED: UPPER OHIO SOUTH ELEVATION: 1,300'
 COUNTY/DISTRICT: OHIO / LIBERTY QUADRANGLE: BETHANY, WV
 SURFACE OWNER: GARY AND TERRY KESTNER ACREAGE: 95.98 +/-
 OIL & GAS ROYALTY OWNER: GARY AND TERRY KESTNER ACREAGE: 486.22 +/-
 LEASE NUMBERS: _____

DRILL CONVERT DRILL DEEPER REDRILL FRACTURE OR STIMULATE
 PLUG OFF FORMATION PERFORATE NEW FORMATION PLUG & ABANDON
 CLEAN OUT & REPLUG OTHER CHANGE (SPECIFY): TVP 6400'
 TARGET FORMATION: MARCELLUS ESTIMATED DEPTH: 12,476' TMD
 WELL OPERATOR: CHESAPEAKE APPALACHIA, LLC. DESIGNATED AGENT: ERIC GILLESPIE
 ADDRESS: PO BOX 18496 ADDRESS: PO BOX 6070
 CITY: OKLAHOMA CITY STATE: OK ZIP CODE: 73154-0496 CITY: CHARLESTON STATE: WV ZIP CODE: 25301

DATE: APRIL 27, 2011
 OPERATOR'S WELL #: GARY KESTNER 3H
 API WELL #: 47 69 **000811**
 STATE COUNTY PERMIT **00081H**