

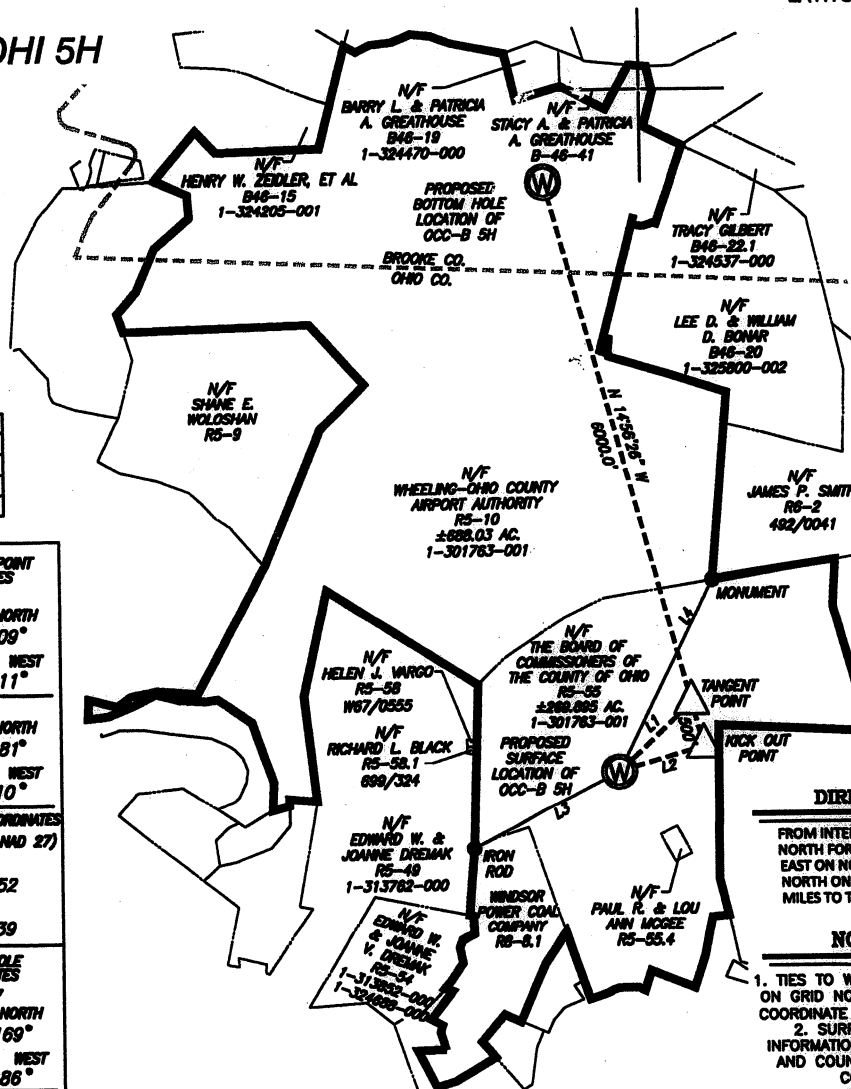
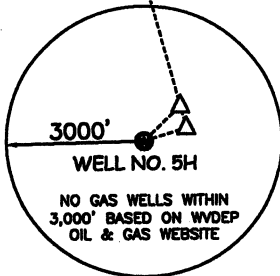
5,027'
LATITUDE 40°10'00"

LONGITUDE 80°37'30"
1,238'

OCC-B OHI 5H

| LINE | BEARING | DISTANCE |
|------|---------------|----------|
| L1 | N 45°33'13" E | 1103.2' |
| L2 | N 72°40'00" E | 984.0' |
| L3 | S 62°22'21" W | 1785.6' |
| L4 | N 26°00'20" E | 2352.4' |

| WELL NO. 5H COORDINATES | KICK OUT POINT COORDINATES |
|---|---|
| NAD 27 True Latitude: NORTH 40.163195° True Longitude: WEST 80.643193° | NAD 27 True Latitude: NORTH 40.164009° True Longitude: WEST 80.639911° |
| NAD 83 True Latitude: NORTH 40.163267° True Longitude: WEST 80.642992° | NAD 83 True Latitude: NORTH 40.164081° True Longitude: WEST 80.639710° |
| STATE PLANE COORDINATES (NORTH ZONE NAD 27) Northing: 607823.67 Easting: 1680488.47 | STATE PLANE COORDINATES (NORTH ZONE NAD 27) Northing: 608108.52 Easting: 1681409.39 |
| TANGENT POINT COORDINATES NAD 27 True Latitude: NORTH 40.165331° True Longitude: WEST 80.640394° | BOTTOM HOLE COORDINATES NAD 27 True Latitude: NORTH 40.181169° True Longitude: WEST 80.646186° |
| NAD 83 True Latitude: NORTH 40.165402° True Longitude: WEST 80.640193° | NAD 83 True Latitude: NORTH 40.181240° True Longitude: WEST 80.645985° |
| STATE PLANE COORDINATES (NORTH ZONE NAD 27) Northing: 608591.43 Easting: 1681280.52 | STATE PLANE COORDINATES (NORTH ZONE NAD 27) Northing: 614381.21 Easting: 1679735.53 |



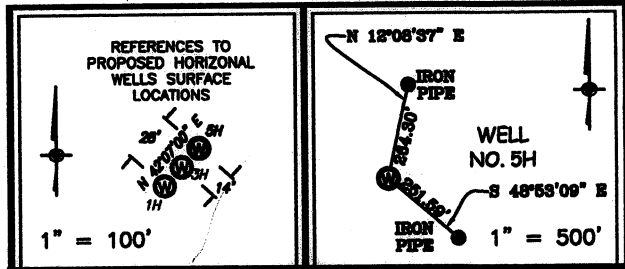
DIRECTIONS TO SITE

FROM INTERSECTION OF SHORT CREEK RD AND NORTH FORK SHORT CREEK RD, GO ± 0.4 MILES EAST ON NORTH FORK SHORT CREEK RD, THEN NORTH ON AN UNNAMED RURAL RD FOR 0.98 MILES TO THE OCC-B WELL PAD ACCESS ROAD ON THE LEFT.

NOTES ON SURVEY

- TIES TO WELLS AND CORNERS ARE BASED ON GRID NORTH FOR THE WV STATE PLANE COORDINATE SYSTEM NORTH ZONE NAD '27.
- SURFACE OWNER AND ADJOINER INFORMATION TAKEN FROM THE ASSESSOR AND COUNTY CLERK RECORDS OF OHIO COUNTY IN MAY, 2010.
- WELL LAT./LONG. (NAD'27) ESTABLISHED BY DUAL FREQ STATIC GPS WITH NGS OPUS SOLUTION.

REFERENCES



GREENWAY ENGINEERING, INC.

I THE UNDERSIGNED, HEREBY CERTIFY THAT THIS PLAT IS CORRECT TO THE BEST OF MY KNOWLEDGE AND BELIEF AND SHOWS ALL THE INFORMATION REQUIRED BY LAW AND THE REGULATIONS ISSUED AND PRESCRIBED BY THE DIVISION OF ENVIRONMENTAL PROTECTION.

P.S. 843 *[Signature]* 06/30/2011



(+) DENOTES LOCATION OF WELL ON UNITED STATES TOPOGRAPHIC MAPS.

DATE JUNE 08 , 20 10
REV. JUNE 30 , 20 11
OPERATORS WELL NO. OCC-B OHI 5H
API WELL NO. 47 - 069 - 00099H
STATE COUNTY PERMIT

MINIMUM DEGREE OF ACCURACY 1/200 FILE NO. OCC-B5H
PROVEN SOURCE OF ELEVATION DUAL FREQ STATIC GPS WITH NGS OPUS SOLUTION SCALE 1" = 2,000'

STATE OF WEST VIRGINIA
DIVISION OF ENVIRONMENTAL PROTECTION
OFFICE OF OIL AND GAS



WELL TYPE: OIL GAS INJECTION WASTE DISPOSAL IF "GAS" PRODUCTION STORAGE DEEP SHALLOW

LOCATION: ELEVATION 1,194.0' WATERSHED OHIO RIVER DIRECT DRAINS
DISTRICT RICHLAND COUNTY OHIO QUADRANGLE TILTONSVILLE 7.5'
SURFACE OWNER THE BOARD OF COMMISSIONERS OF THE COUNTY OF OHIO ACREAGE 269.895 +/-
ROYALTY OWNER THE BOARD OF COMMISSIONERS OF THE COUNTY OF OHIO LEASE ACREAGE 269.895 +/-
PROPOSED WORK: LEASE NO. _____
DRILL CONVERT DRILL DEEPER REDRILL FRACTURE OR STIMULATE PLUG OFF OLD
FORMATION PERFORATE NEW FORMATION PLUG AND ABANDON CLEAN OUT AND REPLUG OTHER
PHYSICAL CHANGE IN WELL (SPECIFY) _____ TARGET FORMATION MARCELLUS
ESTIMATED DEPTH 6,250' + LATERAL LENGTH _____

WELL OPERATOR CHESAPEAKE APPALACHIA, L.L.C. DESIGNATED AGENT ERIC B. GILLESPIE
ADDRESS P.O. BOX 18496 ADDRESS P.O. BOX 6070
OKLAHOMA CITY, OK 73154-0496 CHARLESTON, WV 25301

COUNTY NAME
PERMIT

