



Chesapeake

Shawn Couch 8H

Ohio Co. WV

DIRECTIONAL DRILLING COORDINATOR
Mike Long

DISTRICT OPERATIONS MANAGER
DAVID FONTENOT



Scientific Drilling

Office of Oil and Gas
APR 25 2014
WV Department of
Environmental Protection

CHESAPEAKE

Field: Ohio Co, WV
Site: Shawn Couch
Well: 8H
Wellpath: OH

WELL DETAILS

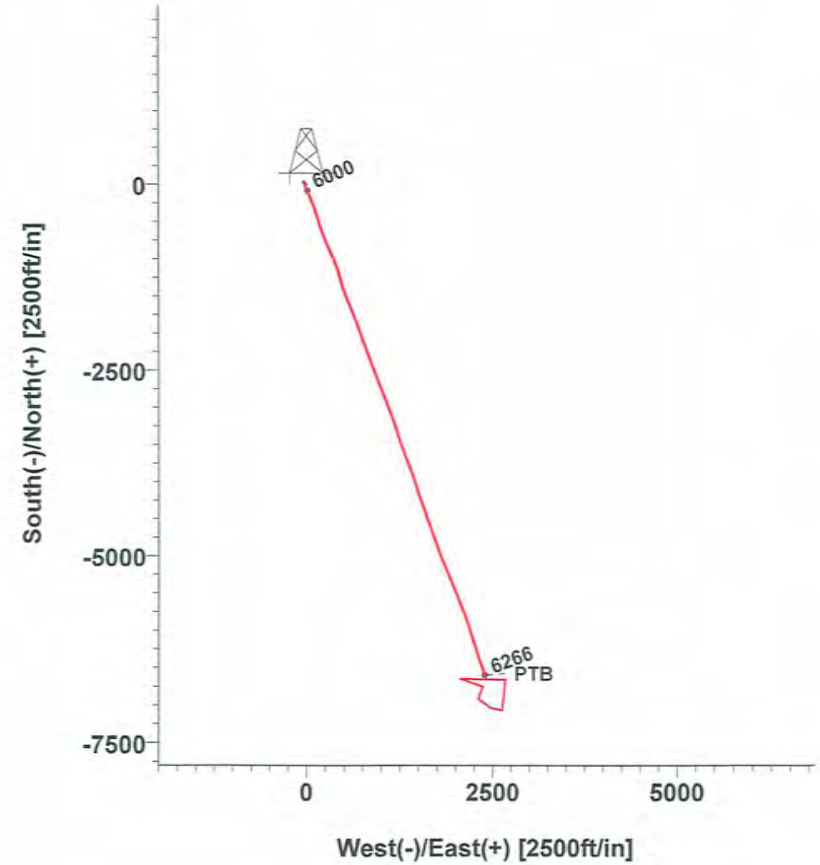
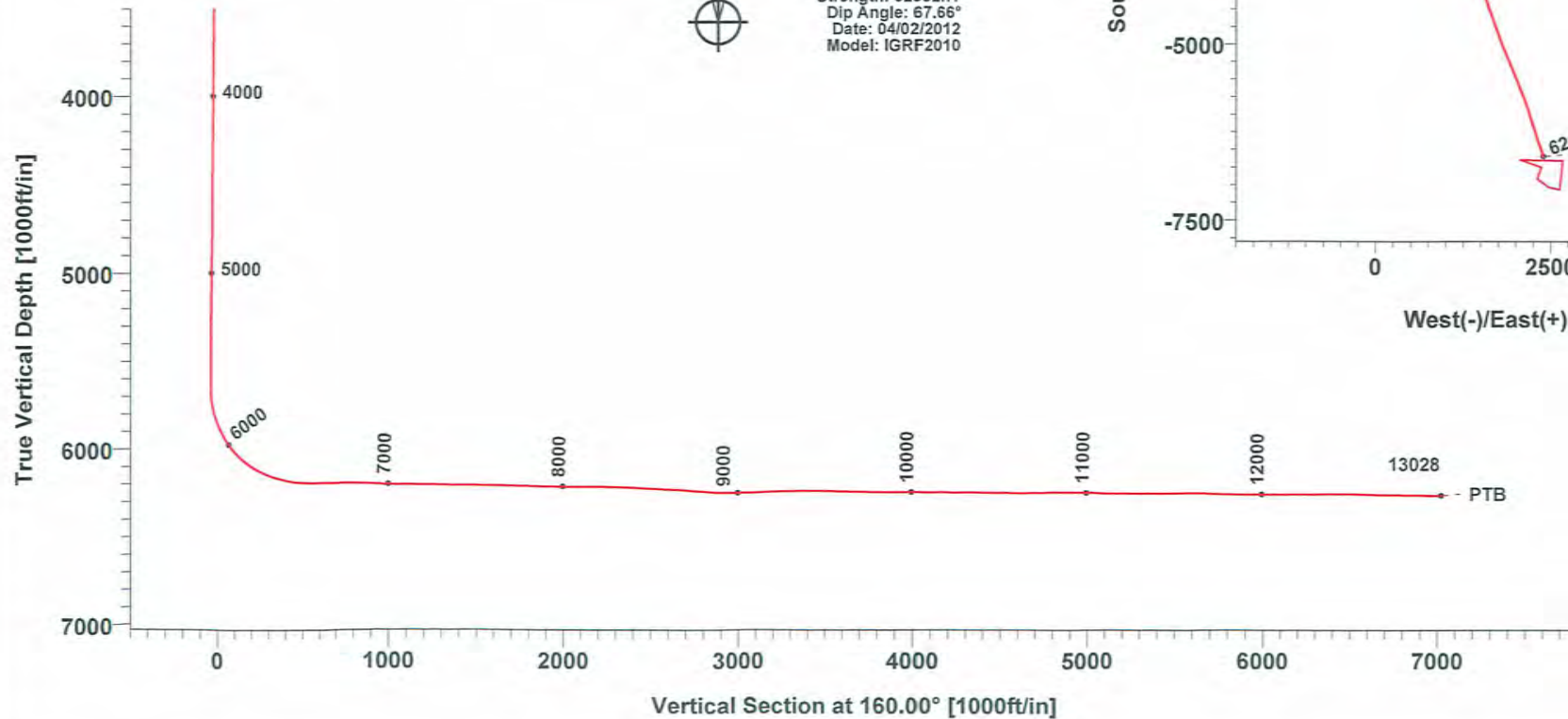
Name+N/-S	+E/-W	Northing	Easting	Latitude	Longitude	Slot	
8H	-12.60	20.90	602018.60	1695640.80	40°08'51.999N	080°35'19.437W	N/A

Target Line = 6207"TVD @ 0 VS, 89.40 Inc @ 160 Azm.



Azimuths to Grid North
True North: 0.69°
Magnetic North: -8.03°

Magnetic Field
Strength: 52982nT
Dip Angle: 67.66°
Date: 04/02/2012
Model: IGRF2010



50100-59

SDI Survey Report

69-00105

Company: CHESAPEAKE	Date: 04/02/2012	Time: 09:25:00	Page: 1
Field: Ohio Co, WV	Co-ordinate(NE) Reference: Well: 8H, Grid North		
Site: Shawn Couch	Vertical (TVD) Reference: 1265 +20 1285.0		
Well: 8H	Section (VS) Reference: Well (0.00N,0.00E,160.00Azi)		
Wellpath: OH	Survey Calculation Method: Minimum Curvature	Db: Sybase	

Field: Ohio Co, WV		
Map System: US State Plane Coordinate System 1927	Map Zone: West Virginia, Northern Zone	
Geo Datum: NAD27 (Clarke 1866)	Coordinate System: Well Centre	
Sys Datum: Mean Sea Level	Geomagnetic Model: IGRF2010	

Site: Shawn Couch		
Site Position:	Northing: 602031.20 ft	Latitude: 40 8 52.121 N
From: Map	Easting: 1695619.90 ft	Longitude: 80 35 19.708 W
Position Uncertainty: 0.00 ft		North Reference: Grid
Ground Level: 1265.00 ft		Grid Convergence: -0.69 deg

Well: 8H			Slot Name:			
Well Position:	+N/-S -12.60 ft	Northing: 602018.60 ft	Latitude: 40 8 51.999 N	+E/-W 20.90 ft	Easting : 1695640.80 ft	Longitude: 80 35 19.437 W
Position Uncertainty: 0.00 ft						

Wellpath: OH			Drilled From: Surface		
Current Datum: 1265 +20	Height 1285.00 ft		Tie-on Depth: 0.00 ft		
Magnetic Data: 04/02/2012			Above System Datum: Mean Sea Level		
Field Strength: 52982 nT			Declination: -8.73 deg		
Vertical Section: Depth From (TVD)	+N/-S	+E/-W	Mag Dip Angle: 67.66 deg		
ft	ft	ft	Direction		
0.00	0.00	0.00	deg		160.00

Survey Program for Definitive Wellpath					
Date: 04/02/2012	Validated: No	Version: 4			
Actual From	To	Survey	Toolcode	Tool Name	
ft	ft				
0.00	5526.00	Survey #1 (0.00-5526.00)	NS-GYRO-MS	North sensing gyrocompassing m	
5556.00	13028.00	Survey #2 (5556.00-13028.00)	SDI MWD	SDI MWD - Standard ver 1.0.1	

Survey										
MD	Incl	Azim	TVD	+N/-S	+E/-W	VS	DLS	Build	Turn	Tool/Comment
ft	deg	deg	ft	ft	ft	ft	deg/100ft	deg/100ft	deg/100ft	
0.00	0.00	0.00	0.00	0.00	0.00	0.00	0.00	0.00	0.00	TIE LINE
100.00	0.45	194.19	100.00	-0.38	-0.10	0.32	0.45	0.45	0.00	NS-GYRO-MS
200.00	0.46	219.43	200.00	-1.07	-0.45	0.85	0.20	0.01	25.24	NS-GYRO-MS
300.00	0.41	226.94	299.99	-1.63	-0.96	1.20	0.08	-0.05	7.51	NS-GYRO-MS
400.00	0.50	239.01	399.99	-2.09	-1.60	1.42	0.13	0.09	12.07	NS-GYRO-MS
500.00	0.40	276.03	499.99	-2.28	-2.32	1.35	0.30	-0.10	37.02	NS-GYRO-MS
600.00	0.23	346.04	599.99	-2.05	-2.72	1.00	0.39	-0.17	70.01	NS-GYRO-MS
700.00	0.33	74.19	699.98	-1.78	-2.49	0.82	0.40	0.10	88.15	NS-GYRO-MS
800.00	0.30	329.45	799.98	-1.47	-2.34	0.58	0.50	-0.03	-104.74	NS-GYRO-MS
900.00	0.39	13.59	899.98	-0.92	-2.40	0.04	0.27	0.09	44.14	NS-GYRO-MS
1000.00	0.20	107.81	999.98	-0.64	-2.15	-0.13	0.45	-0.19	94.22	NS-GYRO-MS
1100.00	0.50	28.47	1099.98	-0.31	-1.78	-0.32	0.50	0.30	-79.34	NS-GYRO-MS
1200.00	0.44	50.05	1199.98	0.32	-1.27	-0.74	0.19	-0.06	21.58	NS-GYRO-MS
1300.00	0.54	293.74	1299.97	0.76	-1.41	-1.19	0.83	0.10	-116.31	NS-GYRO-MS
1400.00	0.30	227.56	1399.97	0.77	-2.04	-1.42	0.50	-0.24	-66.18	NS-GYRO-MS
1500.00	0.32	223.16	1499.97	0.39	-2.42	-1.19	0.03	0.02	-4.40	NS-GYRO-MS
1600.00	0.60	269.59	1599.97	0.18	-3.13	-1.24	0.44	0.28	46.43	NS-GYRO-MS
1700.00	0.21	66.74	1699.97	0.25	-3.49	-1.43	0.80	-0.39	157.15	NS-GYRO-MS
1800.00	0.54	308.84	1799.97	0.62	-3.69	-1.84	0.66	0.33	-117.90	NS-GYRO-MS
1900.00	0.27	199.93	1899.96	0.69	-4.14	-2.06	0.68	-0.27	-108.91	NS-GYRO-MS
2000.00	0.40	253.08	1999.96	0.37	-4.55	-1.90	0.32	0.13	53.15	NS-GYRO-MS
2100.00	0.47	318.30	2099.96	0.57	-5.16	-2.30	0.47	0.07	65.22	NS-GYRO-MS

SDI Survey Report

69.00105

Company: CHESAPEAKE	Date: 04/02/2012	Time: 09:25:00	Page: 2
Field: Ohio Co, WV	Co-ordinate(NE) Reference: Well: 8H, Grid North		
Site: Shawn Couch	Vertical (TVD) Reference: 1265 +20 1285.0		
Well: 8H	Section (VS) Reference: Well (0.00N,0.00E,160.00Azi)		
Wellpath: OH	Survey Calculation Method: Minimum Curvature	Db: Sybase	

Survey

MD ft	Incl deg	Azim deg	TVD ft	+N/-S ft	+E/-W ft	VS ft	DLS deg/100ft	Build deg/100ft	Turn deg/100ft	Tool/Comment
2200.00	1.15	295.97	2199.95	1.32	-6.33	-3.41	0.74	0.68	-22.33	NS-GYRO-MS
2300.00	0.63	279.66	2299.94	1.85	-7.78	-4.40	0.57	-0.52	-16.31	NS-GYRO-MS
2400.00	1.27	286.42	2399.92	2.26	-9.38	-5.33	0.65	0.64	6.76	NS-GYRO-MS
2500.00	1.26	282.64	2499.90	2.81	-11.52	-6.58	0.08	-0.01	-3.78	NS-GYRO-MS
2600.00	0.83	311.39	2599.88	3.53	-13.13	-7.81	0.67	-0.43	28.75	NS-GYRO-MS
2700.00	1.13	316.47	2699.87	4.72	-14.36	-9.35	0.31	0.30	5.08	NS-GYRO-MS
2800.00	0.82	308.70	2799.85	5.89	-15.59	-10.86	0.34	-0.31	-7.77	NS-GYRO-MS
2900.00	1.40	290.84	2899.83	6.77	-17.29	-12.27	0.67	0.58	-17.86	NS-GYRO-MS
3000.00	1.01	296.89	2999.81	7.60	-19.22	-13.72	0.41	-0.39	6.05	NS-GYRO-MS
3100.00	0.83	316.41	3099.80	8.52	-20.51	-15.02	0.36	-0.18	19.52	NS-GYRO-MS
3200.00	0.75	324.24	3199.79	9.58	-21.39	-16.32	0.13	-0.08	7.83	NS-GYRO-MS
3300.00	0.72	319.27	3299.78	10.59	-22.18	-17.53	0.07	-0.03	-4.97	NS-GYRO-MS
3400.00	1.34	302.89	3399.76	11.70	-23.57	-19.05	0.68	0.62	-16.38	NS-GYRO-MS
3500.00	0.73	320.35	3499.75	12.82	-24.96	-20.59	0.68	-0.61	17.46	NS-GYRO-MS
3600.00	0.57	283.27	3599.74	13.43	-25.85	-21.46	0.44	-0.16	-37.08	NS-GYRO-MS
3700.00	1.15	307.68	3699.73	14.16	-27.13	-22.58	0.67	0.58	24.41	NS-GYRO-MS
3800.00	0.55	273.69	3799.72	14.80	-28.40	-23.62	0.76	-0.60	-33.99	NS-GYRO-MS
3900.00	0.45	3.60	3899.72	15.22	-28.86	-24.17	0.71	-0.10	89.91	NS-GYRO-MS
4000.00	0.71	330.64	3999.71	16.15	-29.14	-25.15	0.41	0.26	-32.96	NS-GYRO-MS
4100.00	0.95	353.10	4099.70	17.52	-29.54	-26.56	0.40	0.24	22.46	NS-GYRO-MS
4200.00	0.57	3.21	4199.69	18.84	-29.61	-27.83	0.40	-0.38	10.11	NS-GYRO-MS
4300.00	0.32	324.60	4299.69	19.56	-29.75	-28.56	0.38	-0.25	-38.61	NS-GYRO-MS
4400.00	0.89	314.43	4399.68	20.33	-30.46	-29.53	0.58	0.57	-10.17	NS-GYRO-MS
4500.00	0.33	1.45	4499.68	21.16	-31.01	-30.49	0.71	-0.56	47.02	NS-GYRO-MS
4600.00	0.12	56.36	4599.68	21.51	-30.91	-30.79	0.28	-0.21	54.91	NS-GYRO-MS
4700.00	0.39	327.42	4699.68	21.86	-31.01	-31.14	0.41	0.27	-88.94	NS-GYRO-MS
4800.00	0.45	44.64	4799.68	22.42	-30.92	-31.64	0.53	0.06	77.22	NS-GYRO-MS
4900.00	0.78	18.49	4899.67	23.35	-30.43	-32.34	0.43	0.33	-26.15	NS-GYRO-MS
5000.00	0.80	344.79	4999.66	24.67	-30.39	-33.57	0.46	0.02	-33.70	NS-GYRO-MS
5100.00	0.77	309.65	5099.65	25.77	-31.09	-34.85	0.47	-0.03	-35.14	NS-GYRO-MS
5200.00	0.86	359.23	5199.64	26.95	-31.62	-36.14	0.69	0.09	49.58	NS-GYRO-MS
5300.00	0.74	294.69	5299.63	27.97	-32.22	-37.30	0.86	-0.12	-64.54	NS-GYRO-MS
5400.00	0.66	267.46	5399.63	28.21	-33.38	-37.93	0.34	-0.08	-27.23	NS-GYRO-MS
5500.00	0.43	230.04	5499.62	27.95	-34.24	-37.97	0.41	-0.23	-37.42	NS-GYRO-MS
5526.00	0.65	256.68	5525.62	27.85	-34.46	-37.96	1.26	0.85	102.46	NS-GYRO-MS
5556.00	0.68	262.53	5555.62	27.79	-34.80	-38.01	0.25	0.10	19.50	SDI MWD
5588.00	0.87	263.94	5587.62	27.74	-35.23	-38.11	0.60	0.59	4.41	SDI MWD
5619.00	0.93	268.77	5618.61	27.71	-35.72	-38.25	0.31	0.19	15.58	SDI MWD
5651.00	0.80	245.58	5650.61	27.61	-36.18	-38.32	1.16	-0.41	-72.47	SDI MWD
5682.00	2.28	171.90	5681.60	26.91	-36.29	-37.70	7.08	4.77	-237.68	SDI MWD
5714.00	5.72	166.94	5713.52	24.72	-35.84	-35.49	10.79	10.75	-15.50	SDI MWD
5745.00	10.35	160.33	5744.21	20.59	-34.55	-31.17	15.21	14.94	-21.32	SDI MWD
5777.00	14.04	157.90	5775.48	14.29	-32.13	-24.41	11.64	11.53	-7.59	SDI MWD
5809.00	16.70	158.24	5806.33	6.42	-28.96	-15.94	8.32	8.31	1.06	SDI MWD
5841.00	19.70	158.52	5836.73	-2.87	-25.28	-5.95	9.38	9.37	0.87	SDI MWD
5872.00	22.97	157.37	5865.60	-13.32	-21.04	5.32	10.63	10.55	-3.71	SDI MWD
5904.00	26.47	156.67	5894.66	-25.63	-15.81	18.68	10.98	10.94	-2.19	SDI MWD
5936.00	28.63	156.15	5923.03	-39.20	-9.89	33.45	6.79	6.75	-1.62	SDI MWD
5968.00	32.18	156.23	5950.63	-54.01	-3.35	49.61	11.09	11.09	0.25	SDI MWD
5999.00	35.52	156.73	5976.37	-69.84	3.54	66.84	10.81	10.77	1.61	SDI MWD
6031.00	39.39	157.64	6001.77	-87.78	11.08	86.27	12.22	12.09	2.84	SDI MWD
6062.00	43.38	157.71	6025.02	-106.73	18.86	106.75	12.87	12.87	0.23	SDI MWD
6094.00	47.48	157.55	6047.47	-127.81	27.53	129.52	12.82	12.81	-0.50	SDI MWD

05/23/2014

SDI Survey Report

69-00105

Company: CHESAPEAKE Field: Ohio Co, WV Site: Shawn Couch Well: 8H Wellpath: OH	Date: 04/02/2012 Co-ordinate(NE) Reference: Well: 8H, Grid North Vertical (TVD) Reference: 1265 +20 1285.0 Section (VS) Reference: Well (0.00N,0.00E,160.00Azi) Survey Calculation Method: Minimum Curvature	Time: 09:25:00 Page: 3 Db: Sybase
---	---	--

Survey

MD ft	Incl deg	Azim deg	TVD ft	+N/-S ft	+E/-W ft	VS ft	DLS deg/100ft	Build deg/100ft	Turn deg/100ft	Tool/Comment
6125.00	50.98	157.54	6067.71	-149.51	36.50	152.97	11.29	11.29	-0.03	SDI MWD
6157.00	54.26	157.28	6087.14	-172.98	46.27	178.37	10.27	10.25	-0.81	SDI MWD
6188.00	57.22	157.54	6104.59	-196.63	56.11	203.96	9.57	9.55	0.84	SDI MWD
6220.00	60.67	157.20	6121.09	-221.93	66.66	231.34	10.82	10.78	-1.06	SDI MWD
6252.00	64.38	157.58	6135.85	-248.13	77.57	259.70	11.64	11.59	1.19	SDI MWD
6284.00	68.32	157.64	6148.69	-275.23	88.73	288.98	12.31	12.31	0.19	SDI MWD
6315.00	71.65	160.02	6159.30	-302.39	99.24	318.10	12.94	10.74	7.68	SDI MWD
6347.00	75.10	161.77	6168.45	-331.36	109.27	348.75	11.99	10.78	5.47	SDI MWD
6379.00	76.24	162.97	6176.37	-360.91	118.66	379.73	5.09	3.56	3.75	SDI MWD
6411.00	78.17	162.29	6183.46	-390.69	127.98	410.90	6.38	6.03	-2.12	SDI MWD
6442.00	81.25	161.58	6189.00	-419.68	137.43	441.38	10.19	9.94	-2.29	SDI MWD
6474.00	85.82	161.94	6192.60	-449.87	147.38	473.15	14.32	14.28	1.12	SDI MWD
6506.00	89.25	162.56	6193.97	-480.32	157.13	505.09	10.89	10.72	1.94	SDI MWD
6582.00	90.37	161.48	6194.23	-552.60	180.59	581.04	2.05	1.47	-1.42	SDI MWD
6645.00	90.67	160.84	6193.65	-612.22	200.93	644.02	1.12	0.48	-1.02	SDI MWD
6709.00	91.07	160.09	6192.68	-672.53	222.33	708.01	1.33	0.62	-1.17	SDI MWD
6772.00	90.50	159.35	6191.82	-731.62	244.16	771.01	1.48	-0.90	-1.17	SDI MWD
6836.00	88.32	156.46	6192.48	-790.91	268.23	834.95	5.66	-3.41	-4.52	SDI MWD
6900.00	87.17	155.69	6195.00	-849.36	294.16	898.75	2.16	-1.80	-1.20	SDI MWD
6961.00	87.92	156.12	6197.61	-905.00	319.04	959.54	1.42	1.23	0.70	SDI MWD
7025.00	89.02	156.98	6199.32	-963.69	344.50	1023.40	2.18	1.72	1.34	SDI MWD
7088.00	89.63	156.70	6200.06	-1021.61	369.28	1086.30	1.07	0.97	-0.44	SDI MWD
7151.00	88.92	158.49	6200.86	-1079.84	393.29	1149.23	3.06	-1.13	2.84	SDI MWD
7215.00	89.53	161.65	6201.72	-1140.00	415.10	1213.22	5.03	0.95	4.94	SDI MWD
7278.00	88.72	163.38	6202.69	-1200.08	434.03	1276.15	3.03	-1.29	2.75	SDI MWD
7340.00	88.82	165.20	6204.02	-1259.74	450.81	1337.96	2.94	0.16	2.94	SDI MWD
7400.00	89.50	165.17	6204.90	-1317.74	466.15	1397.70	1.13	1.13	-0.05	SDI MWD
7462.00	89.40	162.20	6205.49	-1377.24	483.56	1459.57	4.79	-0.16	-4.79	SDI MWD
7524.00	89.80	160.60	6205.92	-1435.99	503.34	1521.54	2.66	0.65	-2.58	SDI MWD
7585.00	89.70	159.13	6206.19	-1493.26	524.33	1582.54	2.42	-0.16	-2.41	SDI MWD
7645.00	88.59	157.28	6207.09	-1548.97	546.61	1642.50	3.60	-1.85	-3.08	SDI MWD
7707.00	88.42	156.48	6208.70	-1605.97	570.94	1704.39	1.32	-0.27	-1.29	SDI MWD
7767.00	88.90	156.41	6210.11	-1660.95	594.92	1764.26	0.81	0.80	-0.12	SDI MWD
7828.00	88.52	158.30	6211.48	-1717.23	618.39	1825.17	3.16	-0.62	3.10	SDI MWD
7889.00	87.84	159.70	6213.42	-1774.15	640.24	1886.13	2.55	-1.11	2.30	SDI MWD
7950.00	88.38	159.15	6215.43	-1831.23	661.67	1947.10	1.26	0.89	-0.90	SDI MWD
8012.00	89.06	159.33	6216.81	-1889.19	683.64	2009.07	1.13	1.10	0.29	SDI MWD
8072.00	89.20	161.12	6217.73	-1945.64	703.94	2069.06	2.99	0.23	2.98	SDI MWD
8133.00	89.87	161.41	6218.22	-2003.41	723.53	2130.05	1.20	1.10	0.48	SDI MWD
8196.00	90.23	159.80	6218.17	-2062.83	744.45	2193.04	2.62	0.57	-2.56	SDI MWD
8260.00	89.29	159.84	6218.43	-2122.90	766.53	2257.04	1.47	-1.47	0.06	SDI MWD
8324.00	88.15	160.48	6219.86	-2183.08	788.24	2321.02	2.04	-1.78	1.00	SDI MWD
8387.00	87.48	160.36	6222.26	-2242.40	809.34	2383.97	1.08	-1.06	-0.19	SDI MWD
8451.00	86.58	159.18	6225.58	-2302.37	831.44	2447.89	2.32	-1.41	-1.84	SDI MWD
8514.00	87.23	159.57	6228.98	-2361.24	853.60	2510.79	1.20	1.03	0.62	SDI MWD
8577.00	87.76	159.75	6231.74	-2420.26	875.48	2573.73	0.89	0.84	0.29	SDI MWD
8640.00	87.21	159.31	6234.50	-2479.22	897.49	2636.66	1.12	-0.87	-0.70	SDI MWD
8703.00	86.00	158.74	6238.23	-2537.94	920.00	2699.54	2.12	-1.92	-0.90	SDI MWD
8766.00	85.86	159.46	6242.70	-2596.65	942.41	2762.38	1.16	-0.22	1.14	SDI MWD
8830.00	85.97	159.55	6247.26	-2656.45	964.77	2826.21	0.22	0.17	0.14	SDI MWD
8893.00	89.03	158.51	6250.01	-2715.21	987.29	2889.13	5.13	4.86	-1.65	SDI MWD
8957.00	90.54	158.69	6250.25	-2774.79	1010.64	2953.11	2.38	2.36	0.28	SDI MWD
9020.00	91.04	158.29	6249.38	-2833.40	1033.74	3016.08	1.02	0.79	-0.63	SDI MWD
9083.00	91.65	158.64	6247.90	-2891.99	1056.86	3079.04	1.12	0.97	0.56	SDI MWD

05/23/2014

SDI Survey Report

69-00105

Company: CHESAPEAKE	Date: 04/02/2012	Time: 09:25:00	Page: 4
Field: Ohio Co, WV	Co-ordinate(NE) Reference:	Well: 8H, Grid North	
Site: Shawn Couch	Vertical (TVD) Reference:	1265 +20 1285.0	
Well: 8H	Section (VS) Reference:	Well (0.00N,0.00E,160.00Azi)	
Wellpath: OH	Survey Calculation Method: Minimum Curvature	Db: Sybase	

Survey

MD ft	Incl deg	Azim deg	TVD ft	+N/-S ft	+E/-W ft	VS ft	DLS deg/100ft	Build deg/100ft	Turn deg/100ft	Tool/Comment
9147.00	91.98	160.33	6245.88	-2951.90	1079.27	3143.01	2.69	0.52	2.64	SDI MWD
9210.00	92.42	159.18	6243.46	-3010.96	1101.06	3205.96	1.95	0.70	-1.83	SDI MWD
9274.00	90.87	158.79	6241.62	-3070.67	1124.00	3269.92	2.50	-2.42	-0.61	SDI MWD
9337.00	90.47	160.16	6240.88	-3129.67	1146.08	3332.91	2.27	-0.63	2.17	SDI MWD
9400.00	90.50	160.77	6240.35	-3189.04	1167.15	3395.91	0.97	0.05	0.97	SDI MWD
9463.00	89.23	161.44	6240.50	-3248.64	1187.55	3458.89	2.28	-2.02	1.06	SDI MWD
9527.00	88.52	162.32	6241.75	-3309.46	1207.45	3522.85	1.77	-1.11	1.37	SDI MWD
9591.00	88.66	162.74	6243.33	-3370.49	1226.66	3586.76	0.69	0.22	0.66	SDI MWD
9654.00	88.86	162.55	6244.69	-3430.61	1245.45	3649.68	0.44	0.32	-0.30	SDI MWD
9718.00	89.50	160.40	6245.61	-3491.28	1265.78	3713.65	3.50	1.00	-3.36	SDI MWD
9781.00	89.80	160.14	6245.99	-3550.58	1287.04	3776.65	0.63	0.48	-0.41	SDI MWD
9845.00	89.16	159.76	6246.57	-3610.70	1308.99	3840.65	1.16	-1.00	-0.59	SDI MWD
9909.00	89.73	159.78	6247.19	-3670.75	1331.11	3904.64	0.89	0.89	0.03	SDI MWD
9972.00	90.37	159.46	6247.14	-3729.80	1353.05	3967.64	1.14	1.02	-0.51	SDI MWD
10036.00	89.33	158.82	6247.31	-3789.61	1375.84	4031.63	1.91	-1.62	-1.00	SDI MWD
10100.00	89.73	159.92	6247.83	-3849.50	1398.39	4095.62	1.83	0.62	1.72	SDI MWD
10164.00	88.90	160.82	6248.60	-3909.77	1419.89	4159.62	1.91	-1.30	1.41	SDI MWD
10227.00	89.53	161.90	6249.46	-3969.46	1440.02	4222.59	1.98	1.00	1.71	SDI MWD
10291.00	89.96	163.00	6249.74	-4030.48	1459.32	4286.53	1.85	0.67	1.72	SDI MWD
10354.00	88.83	163.34	6250.41	-4090.78	1477.56	4349.43	1.87	-1.79	0.54	SDI MWD
10416.00	89.50	160.97	6251.31	-4149.79	1496.56	4411.38	3.97	1.08	-3.82	SDI MWD
10479.00	89.46	160.07	6251.89	-4209.18	1517.56	4474.37	1.43	-0.06	-1.43	SDI MWD
10543.00	89.60	160.04	6252.41	-4269.34	1539.40	4538.37	0.22	0.22	-0.05	SDI MWD
10606.00	90.00	160.61	6252.63	-4328.66	1560.61	4601.37	1.11	0.63	0.90	SDI MWD
10670.00	90.37	161.30	6252.42	-4389.15	1581.49	4665.36	1.22	0.58	1.08	SDI MWD
10734.00	91.07	161.65	6251.62	-4449.83	1601.82	4729.33	1.22	1.09	0.55	SDI MWD
10797.00	90.91	160.35	6250.53	-4509.39	1622.33	4792.31	2.08	-0.25	-2.06	SDI MWD
10861.00	90.57	159.11	6249.70	-4569.42	1644.50	4856.30	2.01	-0.53	-1.94	SDI MWD
10924.00	89.50	159.83	6249.67	-4628.42	1666.59	4919.30	2.05	-1.70	1.14	SDI MWD
10987.00	88.79	160.75	6250.61	-4687.72	1687.84	4982.29	1.84	-1.13	1.46	SDI MWD
11051.00	88.83	160.72	6251.94	-4748.12	1708.95	5046.27	0.08	0.06	-0.05	SDI MWD
11114.00	89.09	160.28	6253.08	-4807.50	1729.98	5109.26	0.81	0.41	-0.70	SDI MWD
11178.00	89.69	160.89	6253.76	-4867.85	1751.25	5173.25	1.34	0.94	0.95	SDI MWD
11241.00	90.20	161.35	6253.82	-4927.46	1771.63	5236.24	1.09	0.81	0.73	SDI MWD
11305.00	90.10	159.47	6253.65	-4987.76	1793.09	5300.23	2.94	-0.16	-2.94	SDI MWD
11369.00	90.54	157.96	6253.30	-5047.39	1816.32	5364.21	2.46	0.69	-2.36	SDI MWD
11432.00	90.07	157.66	6252.96	-5105.72	1840.12	5427.17	0.89	-0.75	-0.48	SDI MWD
11495.00	90.27	156.54	6252.77	-5163.75	1864.63	5490.08	1.81	0.32	-1.78	SDI MWD
11559.00	89.43	157.66	6252.94	-5222.71	1889.53	5554.00	2.19	-1.31	1.75	SDI MWD
11622.00	88.69	158.15	6253.97	-5281.07	1913.23	5616.95	1.41	-1.17	0.78	SDI MWD
11686.00	88.76	157.50	6255.40	-5340.32	1937.38	5680.89	1.02	0.11	-1.02	SDI MWD
11748.00	89.03	156.73	6256.59	-5397.43	1961.48	5742.80	1.32	0.44	-1.24	SDI MWD
11812.00	88.72	157.57	6257.85	-5456.40	1986.33	5806.70	1.40	-0.48	1.31	SDI MWD
11874.00	89.73	158.50	6258.69	-5513.89	2009.52	5868.66	2.21	1.63	1.50	SDI MWD
11937.00	90.34	158.77	6258.65	-5572.56	2032.47	5931.64	1.06	0.97	0.43	SDI MWD
12001.00	89.93	159.22	6258.50	-5632.31	2055.41	5995.63	0.95	-0.64	0.70	SDI MWD
12064.00	89.87	157.94	6258.61	-5690.96	2078.42	6058.61	2.03	-0.10	-2.03	SDI MWD
12127.00	90.17	157.38	6258.59	-5749.23	2102.36	6121.56	1.01	0.48	-0.89	SDI MWD
12190.00	90.00	159.16	6258.49	-5807.75	2125.69	6184.53	2.84	-0.27	2.83	SDI MWD
12254.00	89.90	161.06	6258.55	-5867.93	2147.46	6248.52	2.97	-0.16	2.97	SDI MWD
12317.00	90.40	160.84	6258.39	-5927.48	2168.02	6311.51	0.87	0.79	-0.35	SDI MWD
12381.00	90.20	162.13	6258.05	-5988.16	2188.35	6375.49	2.04	-0.31	2.02	SDI MWD
12444.00	91.14	163.23	6257.31	-6048.30	2207.10	6438.42	2.30	1.49	1.75	SDI MWD

SDI Survey Report

69-00105

Company: CHESAPEAKE	Date: 04/02/2012	Time: 09:25:00	Page: 5
Field: Ohio Co, WV	Co-ordinate(NE) Reference:	Well: 8H, Grid North	
Site: Shawn Couch	Vertical (TVD) Reference:	1265 +20 1285.0	
Well: 8H	Section (VS) Reference:	Well (0.00N,0.00E,160.00Azi)	
Wellpath: OH	Survey Calculation Method:	Minimum Curvature	Db: Sybase

Survey

MD ft	Incl deg	Azim deg	TVD ft	+N/-S ft	+E/-W ft	VS ft	DLS deg/100ft	Build deg/100ft	Turn deg/100ft	Tool/Comment
12507.00	88.82	162.45	6257.34	-6108.49	2225.69	6501.33	3.89	-3.68	-1.24	SDI MWD
12570.00	87.82	161.17	6259.18	-6168.31	2245.34	6564.27	2.58	-1.59	-2.03	SDI MWD
12634.00	88.32	161.53	6261.34	-6228.92	2265.80	6628.22	0.96	0.78	0.56	SDI MWD
12695.00	89.16	161.96	6262.68	-6286.83	2284.90	6689.17	1.55	1.38	0.70	SDI MWD
12757.00	89.93	161.85	6263.17	-6345.77	2304.16	6751.14	1.25	1.24	-0.18	SDI MWD
12821.00	89.56	160.85	6263.46	-6406.40	2324.62	6815.12	1.67	-0.58	-1.56	SDI MWD
12885.00	88.86	159.31	6264.34	-6466.57	2346.43	6879.11	2.64	-1.09	-2.41	SDI MWD
12942.00	89.50	159.99	6265.15	-6520.00	2366.24	6936.10	1.64	1.12	1.19	SDI MWD
13028.00	89.50	159.99	6265.91	-6600.81	2395.67	7022.10	0.00	0.00	0.00	PTB

Annotation

MD ft	TVD ft	
13028.00	6265.91	PTB