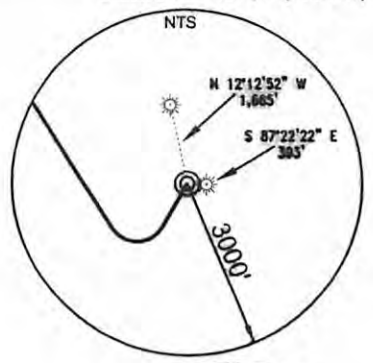


TOP HOLE (NAD 83)	KOP (NAD 83)	TP (NAD 83)	BOTTOM HOLE (NAD 83)
N) 565644.1 E) 1664809.1 LAT.) 40°02'52.5" LONG.) 80°35'05.3" DEC. LAT.) 40.047923 DEC. LONG.) 80.584799	N) 564741.6 E) 1664308.3 LAT.) 40°02'43.5" LONG.) 80°35'11.6" DEC. LAT.) 40.045429 DEC. LONG.) 80.586549	N) 565165.6 E) 1664043.3 LAT.) 40°02'47.7" LONG.) 80°35'15.0" DEC. LAT.) 40.046584 DEC. LONG.) 80.587513	N) 571809.5 E) 1659891.8 LAT.) 40°03'52.9" LONG.) 80°36'09.5" DEC. LAT.) 40.064682 DEC. LONG.) 80.602632
TOP HOLE (NAD 27)	KOP (NAD 27)	TP (NAD 27)	BOTTOM HOLE (NAD 27)
N) 565607.2 E) 1696243.7 LAT.) 40°02'52.3" LONG.) 80°35'06.0" DEC. LAT.) 40.047849 DEC. LONG.) 80.585003	N) 564704.7 E) 1695742.9 LAT.) 40°02'43.3" LONG.) 80°35'12.3" DEC. LAT.) 40.045355 DEC. LONG.) 80.586752	N) 565128.7 E) 1695477.9 LAT.) 40°02'47.4" LONG.) 80°35'15.8" DEC. LAT.) 40.046510 DEC. LONG.) 80.587717	N) 571772.6 E) 1691326.5 LAT.) 40°03'52.6" LONG.) 80°36'10.2" DEC. LAT.) 40.064609 DEC. LONG.) 80.602835

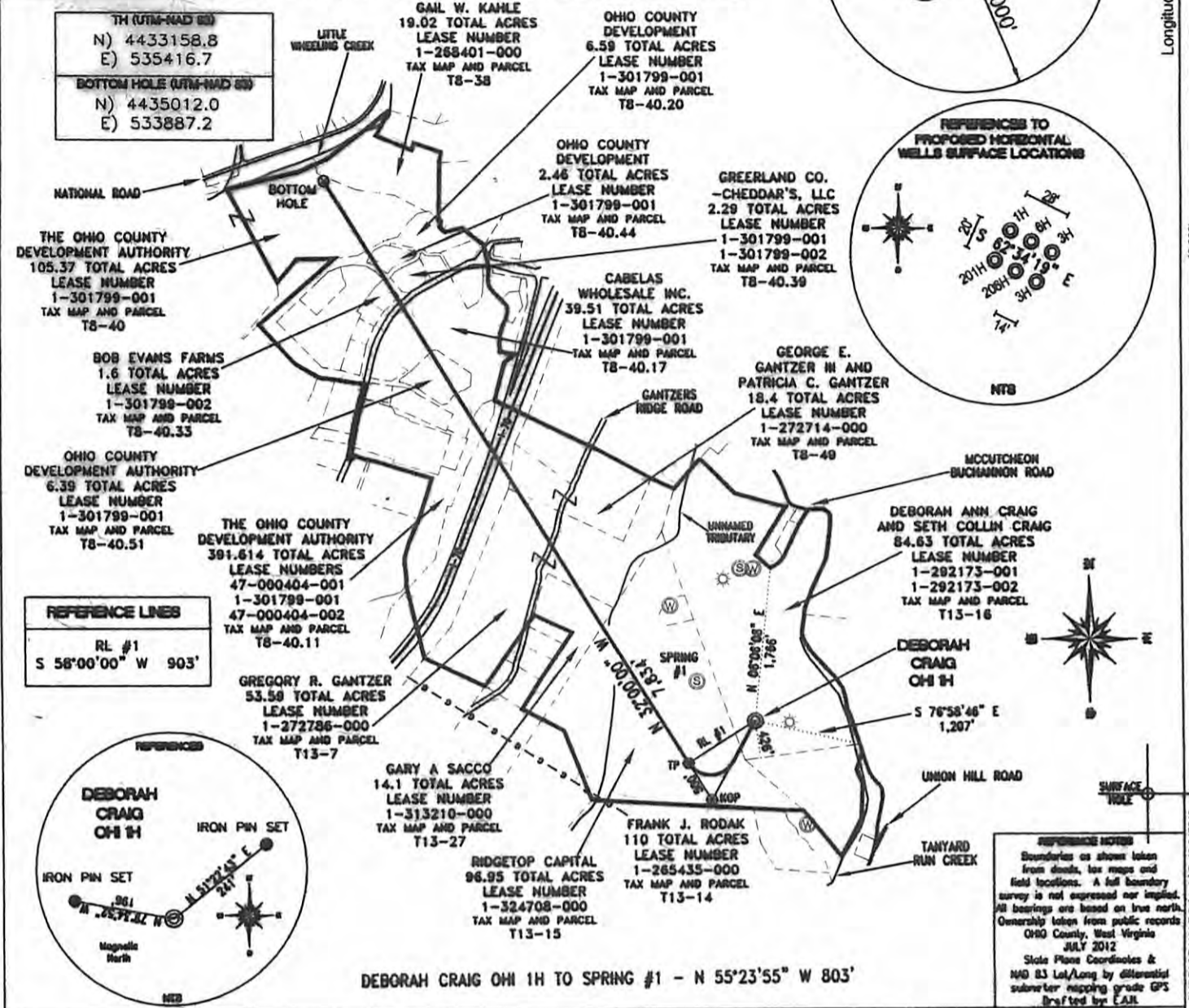
Latitude: 40° 05' 00" (NAD 27)



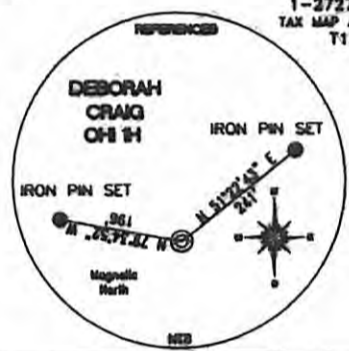
Longitude: 80° 35' 00" (NAD 27)



12,800'



**REFERENCE LINES**  
 RL #1  
 S 58°00'00" W 903'



**REFERENCE NOTES**  
 Boundaries as shown taken from deeds, tax maps and field locations. A full boundary survey is not expressed nor implied. All bearings are based on true north. Ownership taken from public records OHIO County, West Virginia JULY 2012  
 State Plane Coordinates & NAD 83 Lat/Long by differential submeter mapping grade GPS drafted by EAL

DEBORAH CRAIG OHI 1H TO SPRING #1 - N 55°23'55" W 803'

FILE #: CHE 083  
 DRAWING #: 2088  
 SCALE: 1" = 1800'  
 MINIMUM DEGREE OF ACCURACY: 1/200  
 PROVEN SOURCE OF ELEVATION: SUBMETER MAPPING GRADE GPS

I, THE UNDERSIGNED, HEREBY CERTIFY THAT THIS PLAT IS CORRECT TO THE BEST OF MY KNOWLEDGE AND BELIEF AND SHOWS ALL THE INFORMATION REQUIRED BY LAW AND THE REGULATIONS ISSUED AND PRESCRIBED BY THE DEPARTMENT OF ENVIRONMENTAL PROTECTION.  
 Signed:   
 L.L.S. #2124: Ernest J. Benchek III



(+) DENOTES LOCATION OF WELL ON UNITED STATES TOPOGRAPHIC MAPS WYDEP

OFFICE OF OIL & GAS  
 601 57TH STREET  
 CHARLESTON, WV 25304

Well Type:  Oil  Waste Diposal  Production  Deep  
 Gas  Liquid Injection  Storage  Shallow

WATERSHED: UPPER OHIO SOUTH ELEVATION: 1,335'

COUNTY/DISTRICT: OHIO / TRIADELPHIA QUADRANGLE: VALLEY GROVE, WV.

SURFACE OWNER: DEBORAH ANN CRAIG AND SETH COLLINS CRAIG ACREAGE: 84.63 +/-

OIL & GAS ROYALTY OWNER: DEBORAH ANN CRAIG AND SETH COLLINS CRAIG ACREAGE: 840.224 +/-

LEASE NUMBERS:

DRILL  CONVERT  DRILL DEEPER  REDRILL  FRACTURE OR STIMULATE   
 PLUG OFF FORMATION  PERFORATE NEW FORMATION  PLUG & ABANDON   
 CLEAN OUT & REPLUG  OTHER CHANGE  (SPECIFY):

TARGET FORMATION: MARCELLUS ESTIMATED DEPTH: TVD: 6,530' TMD: 14,770'

WELL OPERATOR: CHESAPEAKE APPALACHIA, LLC. DESIGNATED AGENT: ERIC GILLESPIE  
 ADDRESS: PO BOX 18496 ADDRESS: PO BOX 6070  
 CITY: OKLAHOMA CITY STATE: OK ZIP CODE: 73154-0496 CITY: CHARLESTON STATE: WV 25304

DATE: AUGUST 6, 2012 OPERATOR'S WELL #: DEBORAH CRAIG OHI 1H  
 API WELL #: 47 69 00152H6A  
 STATE COUNTY PERMIT  
**CANCELLED**