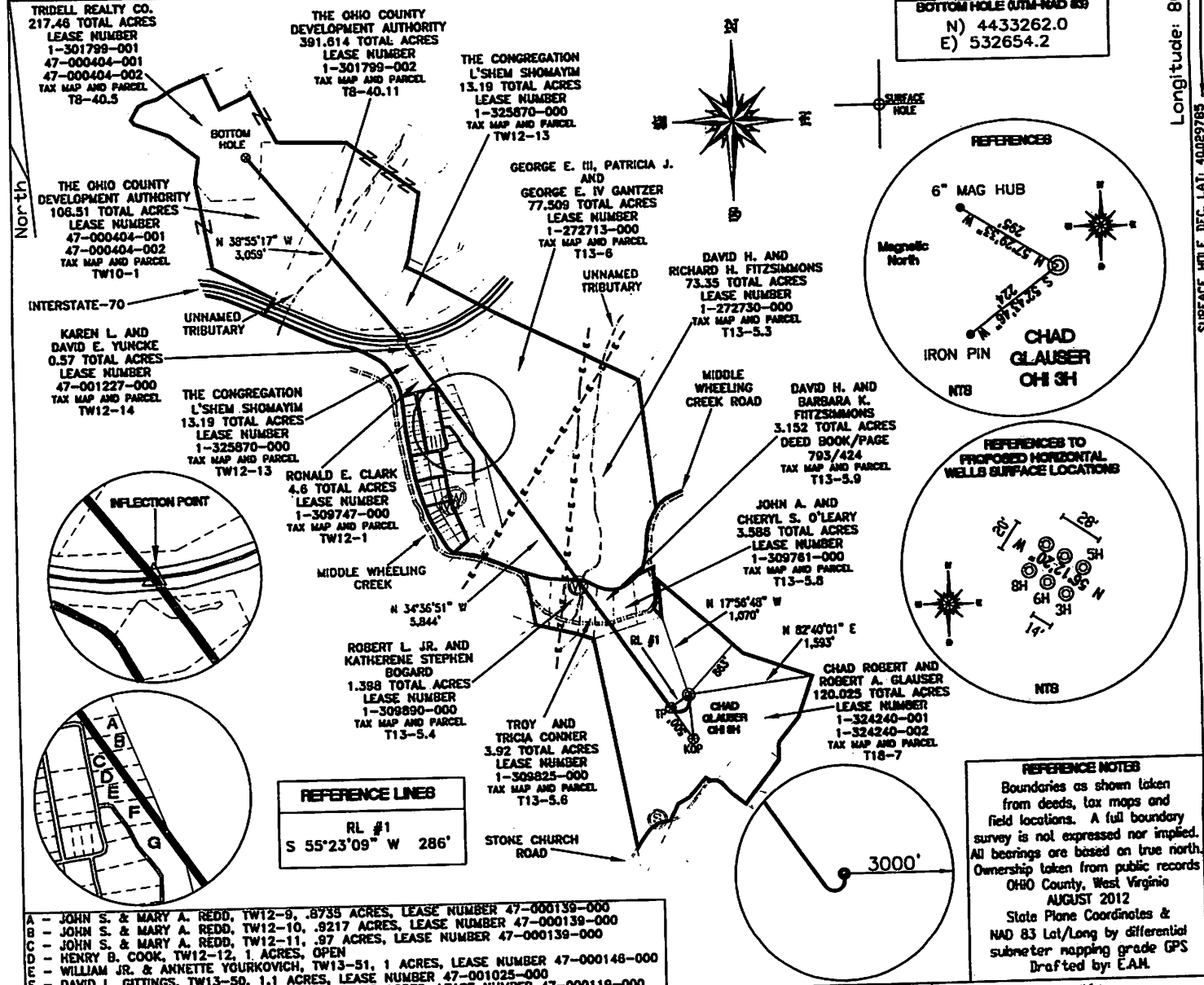


TOP HOLE (NAD 83)	KOP (NAD 83)	TP (NAD 83)	BOTTOM HOLE (NAD 83)
N) 559106.7 E) 1661226.8 LAT.) 40°01'47.5" LONG.) 80°35'50.3" DEC. LAT.) 40.029858 DEC. LONG.) 80.597308	N) 558532.7 E) 1661275.4 LAT.) 40°01'41.8" LONG.) 80°35'49.6" DEC. LAT.) 40.028284 DEC. LONG.) 80.597110	N) 558944.2 E) 1660991.4 LAT.) 40°01'45.9" LONG.) 80°35'53.3" DEC. LAT.) 40.029405 DEC. LONG.) 80.598142	N) 566134.3 E) 1655749.5 LAT.) 40°02'56.3" LONG.) 80°37'01.8" DEC. LAT.) 40.048963 DEC. LONG.) 80.617179
TOP HOLE (NAD 27)	KOP (NAD 27)	TP (NAD 27)	BOTTOM HOLE (NAD 27)
N) 559069.9 E) 1692661.5 LAT.) 40°01'47.2" LONG.) 80°35'51.0" DEC. LAT.) 40.029785 DEC. LONG.) 80.597511	N) 558495.9 E) 1692710.2 LAT.) 40°01'41.6" LONG.) 80°35'50.3" DEC. LAT.) 40.028211 DEC. LONG.) 80.597313	N) 558907.4 E) 1692426.1 LAT.) 40°01'45.6" LONG.) 80°35'54.0" DEC. LAT.) 40.029331 DEC. LONG.) 80.598345	N) 566097.4 E) 1687184.4 LAT.) 40°02'56.0" LONG.) 80°37'02.6" DEC. LAT.) 40.048890 DEC. LONG.) 80.617381

INFLECTION POINT (NAD 83)	INFLECTION POINT (NAD 27)
N) 563754.1 E) 1657671.6 LAT.) 40°02'33.0" LONG.) 80°36'36.8" DEC. LAT.) 40.042495 DEC. LONG.) 80.610208	N) 563717.2 E) 1689106.4 LAT.) 40°02'32.7" LONG.) 80°36'37.5" DEC. LAT.) 40.042422 DEC. LONG.) 80.610411

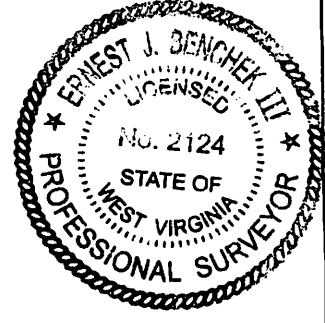
TH (UTM-NAD 83)
N) 4431148.9 E) 534358.7
BOTTOM HOLE (UTM-NAD 83)
N) 4433262.0 E) 532654.2



A - JOHN S. & MARY A. REDD, TW12-9, .8735 ACRES, LEASE NUMBER 47-000139-000
 B - JOHN S. & MARY A. REDD, TW12-10, .9217 ACRES, LEASE NUMBER 47-000139-000
 C - JOHN S. & MARY A. REDD, TW12-11, .97 ACRES, LEASE NUMBER 47-000139-000
 D - HENRY B. COOK, TW12-12, 1 ACRES, OPEN
 E - WILLIAM JR. & ANNETTE YOURKOVICH, TW13-51, 1 ACRES, LEASE NUMBER 47-000148-000
 F - DAVID L. GITTINGS, TW13-50, 1.1 ACRES, LEASE NUMBER 47-001025-000
 G - JAMES III & ELEANOR R. HALL, TW13-49, 4.5 ACRES, LEASE NUMBER 47-000119-000

I, THE UNDERSIGNED, HEREBY CERTIFY THAT THIS PLAT IS CORRECT TO THE BEST OF MY KNOWLEDGE AND BELIEF AND SHOWS ALL THE INFORMATION REQUIRED BY LAW AND THE REGULATIONS ISSUED AND PRESCRIBED BY THE DEPARTMENT OF ENVIRONMENTAL PROTECTION.

Signed:
 L.L.S. #2124 : Ernest J. Benchek III



FILE #: CHE 047
 DRAWING #: 1813
 SCALE: 1" = 2000'
 MINIMUM DEGREE OF ACCURACY: 1/200
 PROVEN SOURCE SUBMETER MAPPING OF ELEVATION: GRADE GPS

DATE: AUGUST 28, 2012

OPERATOR'S WELL #: CHAD GLAUSER OHI 3H

API WELL #: 47 69 0016046A
 STATE COUNTY PERMIT

WELL Type: Oil Waste Disposal Production Deep
 Gas Liquid Injection Storage Shallow

WATERSHED: UPPER OHIO SOUTH

COUNTY/DISTRICT: OHIO / TRIADELPHIA

SURFACE OWNER: CHAD ROBERT AND ROBERT A. GLAUSER

OIL & GAS ROYALTY OWNER: CHAD ROBERT AND ROBERT A. GLAUSER

LEASE NUMBERS:

DRILL CONVERT DRILL DEEPER REDRILL FRACTURE OR STIMULATE
 PLUG OFF FORMATION PERFORATE NEW FORMATION PLUG & ABANDON
 CLEAN OUT & REPLUG OTHER CHANGE (SPECIFY):

TARGET FORMATION: MARCELLUS

WELL OPERATOR: CHESAPEAKE APPALACHIA, LLC.

ADDRESS: PO BOX 18496

CITY: OKLAHOMA CITY STATE: OK ZIP CODE: 73154-0496

ESTIMATED DEPTH: TVD: 6,380' TMD: 15,103'

DESIGNATED AGENT: ERIC GILLESPIE

ADDRESS: PO BOX 6070

CITY: CHARLESTON STATE: WV ZIP CODE: 25362

69-00160

WELL CHAD GLAUSER OHI 3H
QUAD VALLEY GROVE WV

