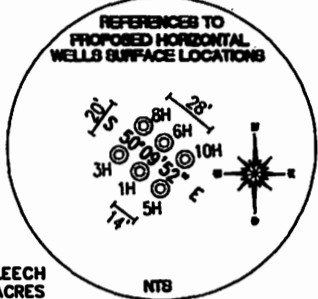
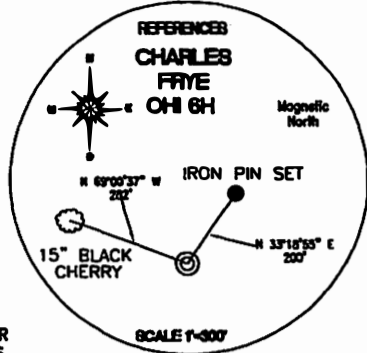
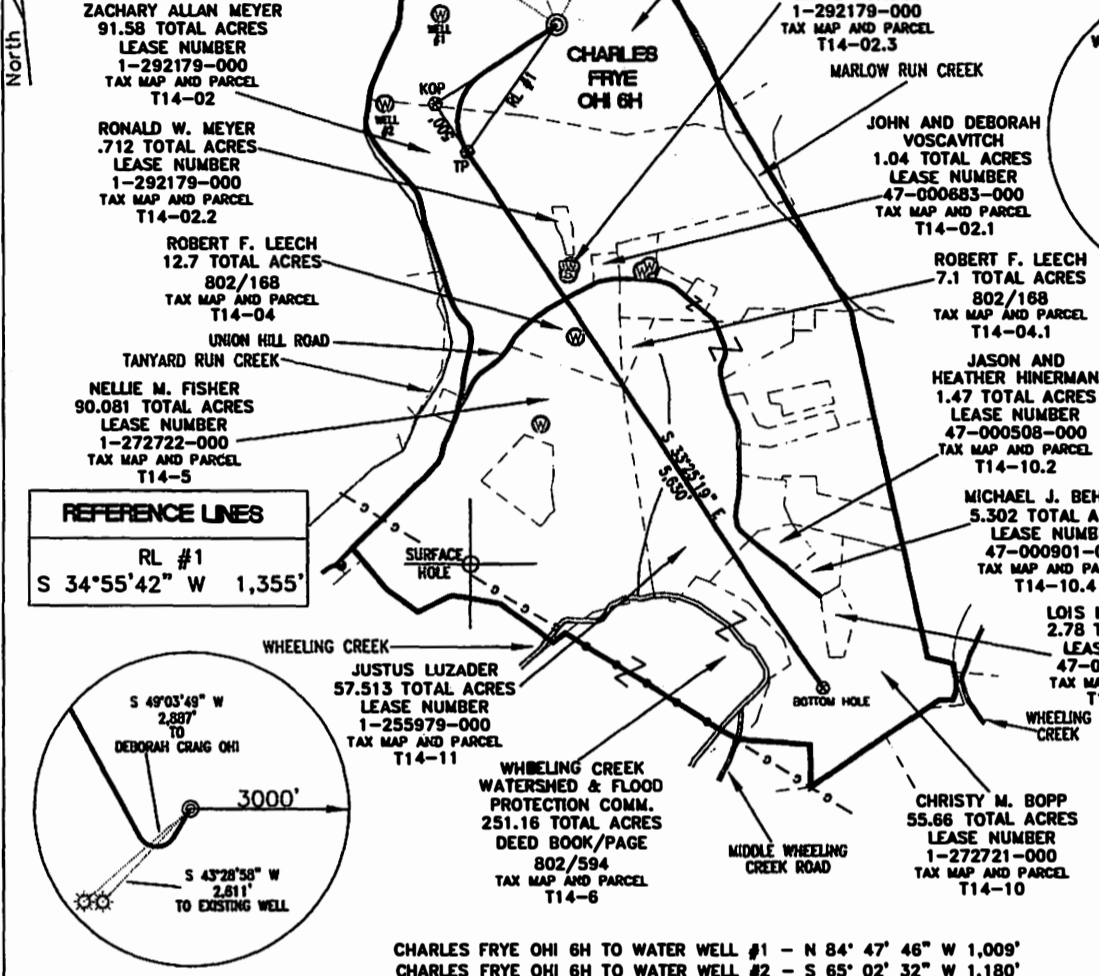


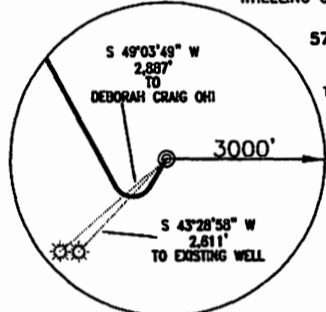
<b>TOP HOLE (NAD 83)</b> N) 567520.3 E) 1668997.7 LAT.) 40°03'11.3" LONG.) 80°34'37.4" DEC. LAT.) 40.053145 DEC. LONG.) 80.577062	<b>KOP (NAD 83)</b> N) 566826.4 E) 1665946.3 LAT.) 40°03'04.3" LONG.) 80°34'50.8" DEC. LAT.) 40.051206 DEC. LONG.) 80.580788	<b>TP (NAD 83)</b> N) 566409.1 E) 1666221.7 LAT.) 40°03'00.3" LONG.) 80°34'47.2" DEC. LAT.) 40.050069 DEC. LONG.) 80.579786	<b>BOTTOM HOLE (NAD 83)</b> N) 561710.4 E) 1669322.5 LAT.) 40°02'14.2" LONG.) 80°34'06.6" DEC. LAT.) 40.037273 DEC. LONG.) 80.568511
<b>TOP HOLE (NAD 87)</b> N) 567483.3 E) 1698432.2 LAT.) 40°03'11.1" LONG.) 80°34'38.2" DEC. LAT.) 40.053071 DEC. LONG.) 80.577266	<b>KOP (NAD 87)</b> N) 566789.5 E) 1697380.9 LAT.) 40°03'04.1" LONG.) 80°34'51.6" DEC. LAT.) 40.051132 DEC. LONG.) 80.580992	<b>TP (NAD 87)</b> N) 566372.2 E) 1697656.3 LAT.) 40°02'60.0" LONG.) 80°34'48.0" DEC. LAT.) 40.049996 DEC. LONG.) 80.579990	<b>BOTTOM HOLE (NAD 87)</b> N) 561673.5 E) 1700757.0 LAT.) 40°02'13.9" LONG.) 80°34'07.4" DEC. LAT.) 40.037199 DEC. LONG.) 80.568716



<b>TH (UTM-NAD 83)</b> N) 4433741.6 E) 536073.9
<b>BOTTOM HOLE (UTM-NAD 83)</b> N) 4431983.4 E) 536811.8



<b>REFERENCE LINES</b> RL #1 S 34°55'42" W 1,355'
---



**REFERENCE NOTES**  
 Boundaries as shown taken from deeds, tax maps and field locations. A full boundary survey is not expressed nor implied. All bearings are based on true north. Ownership taken from public records OHIO County, West Virginia JULY 2012  
 State Plane Coordinates & NAD 27 Lat/Long by differential submeter mapping grade GPS  
 Drafted by: EAM

CHARLES FRYE OHI 6H TO WATER WELL #1 - N 84° 47' 46" W 1,009'  
 CHARLES FRYE OHI 6H TO WATER WELL #2 - S 65° 02' 32" W 1,180'

FILE #: CHE 046  
 DRAWING #: 2090  
 SCALE: 1" = 1600'  
 MINIMUM DEGREE OF ACCURACY: 1/200  
 PROVEN SOURCE SUBMETER MAPPING OF ELEVATION: GRADE GPS

I, THE UNDERSIGNED, HEREBY CERTIFY THAT THIS PLAT IS CORRECT TO THE BEST OF MY KNOWLEDGE AND BELIEF AND SHOWS ALL THE INFORMATION REQUIRED BY LAW AND THE REGULATIONS ISSUED AND PRESCRIBED BY THE DEPARTMENT OF ENVIRONMENTAL PROTECTION.  
 Signed:   
 L.L.S. #2124 : Ernest J. Benchek III



(+) DENOTES LOCATION OF WELL ON UNITED STATES TOPOGRAPHIC MAPS WYDEP  
 OFFICE OF OIL & GAS  
 601 5TH STREET  
 CHARLESTON, WV 25304

DATE: AUGUST 6, 2012  
 OPERATOR'S WELL #: CHARLES FRYE OHI 6H  
 API WELL #: 47 69 00162H6A  
 STATE COUNTY PERMIT

Well Type:  Oil  Waste Diposal  Production  Deep  
 Gas  Liquid Injection  Storage  Shallow

WATERSHED: UPPER OHIO SOUTH ELEVATION: 1,260'  
 COUNTY/DISTRICT: OHIO / TRIADELPHIA QUADRANGLE: VALLEY GROVE, WV.  
 SURFACE OWNER: CHARLES AND DOROTHY FRYE ACREAGE: 105.00 +/-  
 OIL & GAS ROYALTY OWNER: CHARLES AND DOROTHY FRYE ACREAGE: 419.634 +/-  
 LEASE NUMBERS: \_\_\_\_\_

DRILL  CONVERT  DRILL DEEPER  REDRILL  FRACTURE OR STIMULATE   
 PLUG OFF FORMATION  PERFORATE NEW FORMATION  PLUG & ABANDON   
 CLEAN OUT & REPLUG  OTHER CHANGE  (SPECIFY): TVD: 6,500' TMD: 12,599'  
 TARGET FORMATION: MARCELLUS ESTIMATED DEPTH: \_\_\_\_\_  
 WELL OPERATOR: CHESAPEAKE APPALACHIA, LLC. DESIGNATED AGENT: ERIC GILLESPIE  
 ADDRESS: PO BOX 18496 ADDRESS: PO BOX 6070  
 CITY: OKLAHOMA CITY STATE: OK ZIP CODE: 73154-0496 CITY: CHARLESTON STATE: WV ZIP CODE: 25301

67-00162

WELL CHARLES FRYE OH16H  
QUAD VALLEY GROVE WV



2-150 X  
2-1217

69-00162

05/03/2013