

SWN PRODUCTION COMPANY, LLC

Location: Ohio County, WV
 Field: Ohio
 Facility: Franz Thoman OHI Pad
 Wellbore: Franz Thoman OHI 605H.PWB

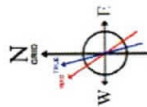
Phot reference wellpath is Franz Thoman OHI 605H.PWB Rev A.0	Grid System: NAD83 / UTM Zone 17 North, US feet
True vertical depths are referenced to SDC 40 (KB)	North Reference: Grid north
Reference wellpath measured depths are referenced to SDC 40 (KB)	Scale: True distance
SDC 40 (KB) to Mean Sea Level: 1163.3 feet	Coordinates are in feet referenced to SDC
Mean Sea Level to Ground level (At Slot: Slot 605H): -1137.3 feet	Depths are in feet
Offset wellpath MDs are referenced to each path's default MD datum	Created by: atampm on 2020-04-06; Database: VW, MPL, EASTERNUS, Dahn

Location Information

Facility Name	Grid East (US ft)	Grid North (US ft)	Latitude	Longitude
Franz Thoman OHI Pad	1735483.620	14576675.990	40°08'11.9423"N	80°39'35.4898"W
Slot	Local N (ft)	Local E (ft)	Latitude <td>Longitude</td>	Longitude
Slot 605H	-2.88	9.57	40°08'11.9135"N	80°39'35.9667"W
SDC 40 (KB) to Ground level (At Slot: Slot 605H)	26ft			
Mean Sea Level to Ground level (At Slot: Slot 605H)	-1137.3ft			
SDC 40 (KB) to Mean Sea Level	1163.3ft			

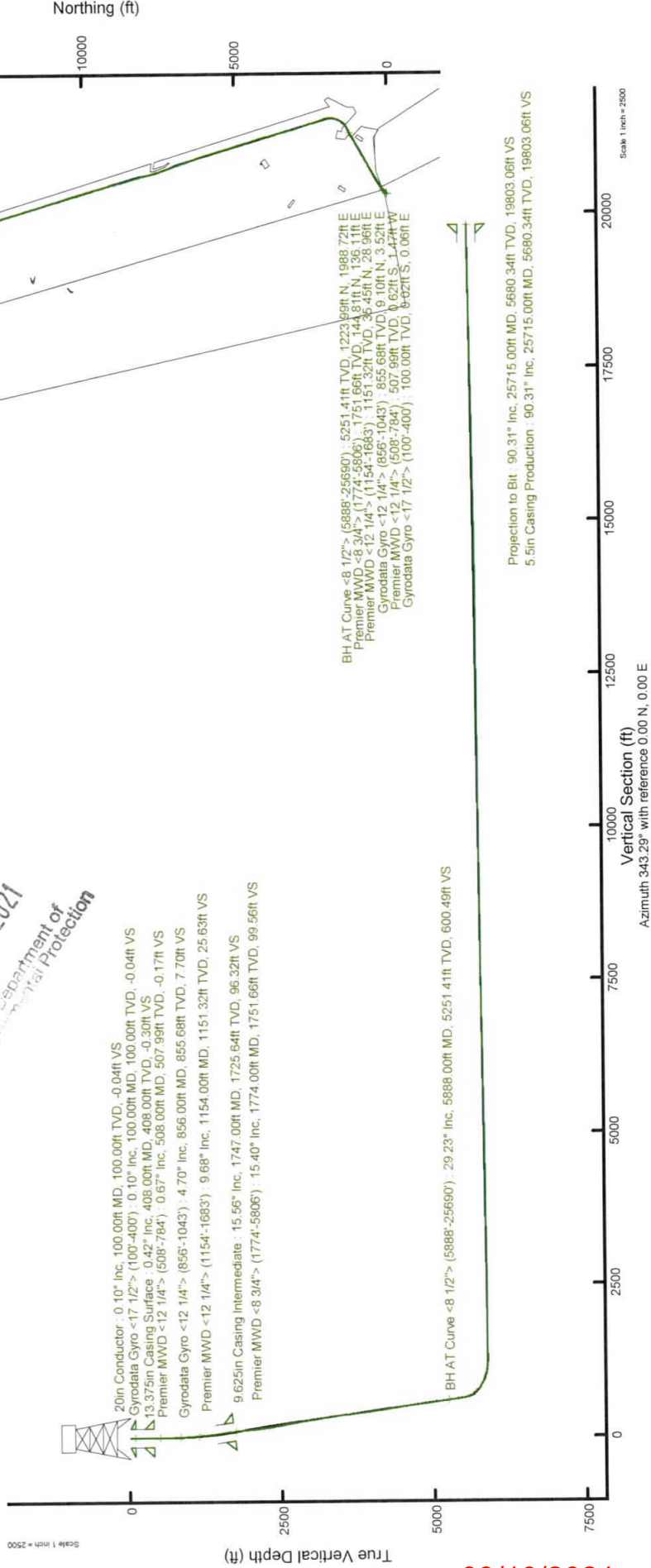
API: 47-069-00314-0000
 BH Job #: 110339018A
 Rig: SDC 40

Duration: 03/21/2020 - 03/27/2020



User specified Dip: 67.33° Field: 52427 ft
 Magnetic: Grid North is 0.22 degrees East of True North (18/2020)
 To correct azimuth from True to Grid subtract 0.22 degrees
 To correct azimuth from Magnetic to Grid subtract 67.21 degrees

RECEIVED
 Office of Oil and Gas
 JAN 29 2021
 West Virginia Department of Environmental Protection



09/10/2021



Actual Wellpath Report

Franz Thoman OHI 605H AWP Proj: 25715
Page 9 of 13

RECEIVED
Office of Oil and Gas
JAN 29 2021
Southwestern Energy
WV Department of Environmental Protection

REFERENCE WELLPATH IDENTIFICATION

Operator	SWN PRODUCTION COMPANY, LLC	Well	Franz Thoman OHI 605H
Field	Ohio	API/Legal	
Facility	Franz Thoman OHI Pad	Wellbore	Franz Thoman OHI 605H AWB
Slot	Slot 605H		

WELLPATH DATA (280 stations)

MD [ft]	Inclination [°]	Azimuth [°]	TVD [ft]	Vert Sect [ft]	North [ft]	East [ft]	Grid East [US ft]	Grid North [US ft]	Latitude	Longitude	Closure Dist [ft]	Closure Dir [°]	DLS ["/100ft]	Build Rate ["/100ft]	Turn Rate ["/100ft]
19307.00	90.120	343.440	5770.57	13396.02	13668.99	-1058.10	1734435.50	14590336.75	40°10'27.0301"N	80°39'48.3233"W	13709.89	355.574	0.66	-0.48	-0.44
19401.00	91.050	343.320	5769.61	13490.01	13759.06	-1084.99	1734408.63	14590426.78	40°10'27.9212"N	80°39'48.6652"W	13801.77	355.491	1.00	0.99	-0.13
19496.00	90.710	343.210	5768.15	13585.00	13850.03	-1112.34	1734381.29	14590517.71	40°10'28.8211"N	80°39'49.0132"W	13894.62	355.408	0.38	-0.36	-0.12
19591.00	90.250	343.560	5767.35	13680.00	13941.06	-1139.50	1734354.13	14590608.71	40°10'29.7219"N	80°39'49.3586"W	13987.55	355.327	0.61	-0.48	0.37
19685.00	90.800	343.290	5766.49	13773.99	14031.14	-1166.34	1734327.31	14590698.75	40°10'30.6129"N	80°39'49.7000"W	14079.53	355.248	0.67	0.59	-0.32
19780.00	90.580	343.580	5765.35	13868.98	14122.18	-1193.45	1734300.21	14590789.76	40°10'31.5136"N	80°39'50.0448"W	14172.52	355.169	0.41	-0.23	0.34
19875.00	90.740	343.550	5764.25	13963.98	14213.29	-1220.32	1734273.35	14590880.84	40°10'32.4150"N	80°39'50.3866"W	14265.59	355.093	0.17	0.17	-0.03
19970.00	90.340	343.490	5763.36	14058.97	14304.39	-1247.27	1734246.41	14590971.90	40°10'33.3161"N	80°39'50.7293"W	14358.66	355.017	0.43	-0.42	-0.06
20064.00	91.320	344.240	5761.99	14152.96	14394.67	-1273.39	1734220.30	14591062.15	40°10'34.2093"N	80°39'51.0614"W	14450.89	354.945	1.31	1.04	0.80
20159.00	90.920	343.310	5760.14	14247.93	14485.87	-1299.93	1734193.77	14591153.31	40°10'35.1115"N	80°39'51.3988"W	14544.08	354.872	1.07	-0.42	-0.98
20254.00	90.680	342.830	5758.81	14342.92	14576.75	-1327.59	1734166.12	14591244.15	40°10'36.0106"N	80°39'51.7508"W	14637.08	354.796	0.56	-0.25	-0.51
20348.00	90.550	343.200	5757.80	14436.92	14666.64	-1355.05	1734138.67	14591334.01	40°10'36.8999"N	80°39'52.1001"W	14729.10	354.721	0.42	-0.14	0.39
20443.00	90.710	342.840	5756.76	14531.91	14757.49	-1382.79	1734110.94	14591424.82	40°10'37.7988"N	80°39'52.4531"W	14822.14	354.647	0.41	0.17	-0.38
20538.00	90.580	342.730	5755.69	14626.90	14848.23	-1410.90	1734082.84	14591515.53	40°10'38.6965"N	80°39'52.8109"W	14915.11	354.572	0.18	-0.14	-0.12
20632.00	90.710	342.890	5754.63	14720.89	14938.03	-1438.68	1734055.07	14591605.29	40°10'39.5849"N	80°39'53.1644"W	15007.15	354.499	0.22	0.14	0.17
20727.00	90.680	343.190	5753.48	14815.88	15028.89	-1466.39	1734027.37	14591696.11	40°10'40.4838"N	80°39'53.5169"W	15100.26	354.427	0.32	-0.03	0.32
20822.00	90.650	343.520	5752.38	14910.87	15119.90	-1493.60	1734000.17	14591787.09	40°10'41.3842"N	80°39'53.8631"W	15193.49	354.358	0.35	-0.03	0.35
20916.00	90.580	343.650	5751.37	15004.87	15210.06	-1520.17	1733973.62	14591877.22	40°10'42.2762"N	80°39'54.2009"W	15285.84	354.293	0.16	-0.07	0.14
21011.00	90.830	343.950	5750.20	15099.86	15301.28	-1546.67	1733947.13	14591968.40	40°10'43.1786"N	80°39'54.5379"W	15379.26	354.228	0.41	0.26	0.32
21106.00	91.050	342.820	5748.64	15194.84	15392.30	-1573.83	1733919.98	14592059.39	40°10'44.0791"N	80°39'54.8834"W	15472.56	354.162	1.21	0.23	-1.19
21200.00	91.020	342.930	5746.94	15288.82	15482.12	-1601.50	1733892.31	14592149.17	40°10'44.9677"N	80°39'55.2355"W	15564.73	354.094	0.12	-0.03	0.12
21295.00	91.170	342.780	5745.13	15383.80	15572.88	-1629.50	1733864.33	14592239.90	40°10'45.8656"N	80°39'55.5919"W	15657.91	354.026	0.22	0.16	-0.16
21389.00	90.860	343.080	5743.46	15477.79	15662.73	-1657.09	1733836.75	14592329.70	40°10'46.7545"N	80°39'55.9429"W	15750.14	353.961	0.46	-0.33	0.32
21484.00	91.080	342.940	5741.85	15572.77	15753.57	-1684.85	1733809.00	14592420.51	40°10'47.6532"N	80°39'56.2961"W	15843.41	353.895	0.27	0.23	-0.15
21579.00	90.770	343.400	5740.32	15667.76	15844.59	-1712.35	1733781.51	14592511.39	40°10'48.5527"N	80°39'56.6460"W	15936.75	353.832	0.58	-0.33	0.48
21673.00	90.920	343.540	5738.93	15761.75	15934.59	-1739.09	1733754.78	14592601.46	40°10'49.4441"N	80°39'56.9862"W	16029.21	353.771	0.22	0.16	0.15
21768.00	90.920	343.010	5737.41	15856.74	16025.56	-1766.43	1733727.46	14592692.40	40°10'50.3441"N	80°39'57.3340"W	16122.62	353.710	0.56	0.00	-0.56
21863.00	90.680	343.230	5736.08	15951.73	16116.46	-1794.01	1733699.89	14592783.26	40°10'51.2433"N	80°39'57.6849"W	16216.00	353.648	0.34	-0.25	0.23
21957.00	90.830	343.330	5734.84	16045.72	16206.48	-1821.05	1733672.85	14592873.24	40°10'52.1339"N	80°39'58.0289"W	16308.47	353.589	0.19	0.16	0.11
22052.00	90.650	343.800	5733.61	16140.71	16297.59	-1847.92	1733645.99	14592964.32	40°10'53.0352"N	80°39'58.3708"W	16402.02	353.531	0.53	-0.19	0.49

09/10/2021

WV Department of
Environmental Protection

REFERENCE WELLPATH IDENTIFICATION

Operator	SWN PRODUCTION COMPANY, LLC		Well	Franz Thoman OHI 605H	
Field	Ohio		API/Legal		
Facility	Franz Thoman OHI Pad		Wellbore	Franz Thoman OHI 605H AWB	
Slot	Slot 605H				

WELLPATH DATA (280 stations)

MD [ft]	Inclination [°]	Azimuth [°]	TVD [ft]	Vert Sect [ft]	North [ft]	East [ft]	Grid East [US ft]	Grid North [US ft]	Latitude	Longitude	Closure Dist [ft]	Closure Dir [°]	DLS [°/100ft]	Build Rate [°/100ft]	Turn Rate [°/100ft]
22147.00	90.650	343.520	5732.54	16235.70	16388.75	-1874.65	1733619.27	14593055.44	40°10'53.9370"N	80°39'58.7107"W	16495.61	353.475	0.29	0.00	-0.29
22241.00	90.620	343.990	5731.50	16329.69	16478.99	-1900.94	1733592.99	14593145.64	40°10'54.8298"N	80°39'59.0451"W	16588.27	353.420	0.50	-0.03	0.50
22336.00	90.550	343.430	5730.53	16424.68	16570.17	-1927.59	1733566.36	14593236.79	40°10'55.7318"N	80°39'59.3840"W	16681.91	353.365	0.59	-0.07	-0.59
22430.00	90.920	342.550	5729.32	16518.67	16660.05	-1955.09	1733538.87	14593326.63	40°10'56.6210"N	80°39'59.7339"W	16774.37	353.307	1.02	0.39	-0.94
22525.00	90.680	342.770	5727.99	16613.66	16750.72	-1983.40	1733510.57	14593417.27	40°10'57.5181"N	80°40'00.0943"W	16867.74	353.247	0.34	-0.25	0.23
22620.00	90.740	342.690	5726.82	16708.65	16841.43	-2011.60	1733482.38	14593507.95	40°10'58.4155"N	80°40'00.4532"W	16961.14	353.189	0.11	0.06	-0.08
22714.00	90.920	342.970	5725.45	16802.63	16931.23	-2039.34	1733454.64	14593597.71	40°10'59.3040"N	80°40'00.8064"W	17053.61	353.132	0.35	0.19	0.30
22809.00	91.020	343.070	5723.85	16897.62	17022.08	-2067.08	1733426.92	14593688.52	40°11'00.2027"N	80°40'01.1594"W	17147.13	353.076	0.15	0.11	0.11
22904.00	91.080	343.270	5722.11	16992.60	17112.99	-2094.59	1733399.43	14593779.40	40°11'01.1022"N	80°40'01.5093"W	17240.70	353.022	0.22	0.06	0.21
22998.00	91.050	343.550	5720.36	17086.59	17203.07	-2121.42	1733372.60	14593869.44	40°11'01.9933"N	80°40'01.8507"W	17333.37	352.970	0.30	-0.03	0.30
23093.00	90.890	343.440	5718.75	17181.57	17294.14	-2148.40	1733345.63	14593960.47	40°11'02.8942"N	80°40'02.1940"W	17427.07	352.919	0.20	-0.17	-0.12
23188.00	91.450	342.360	5716.81	17276.55	17384.92	-2176.33	1733317.71	14594051.22	40°11'03.7923"N	80°40'02.5494"W	17520.61	352.865	1.28	0.59	-1.14
23282.00	91.320	342.780	5714.54	17370.51	17474.57	-2204.48	1733289.57	14594140.84	40°11'04.6794"N	80°40'02.9078"W	17613.08	352.810	0.47	-0.14	0.45
23377.00	91.660	343.830	5712.07	17465.48	17565.54	-2231.76	1733262.30	14594231.77	40°11'05.5793"N	80°40'03.2549"W	17706.75	352.759	1.16	0.36	1.11
23472.00	91.450	344.020	5709.49	17560.44	17656.79	-2258.06	1733236.02	14594322.98	40°11'06.4820"N	80°40'03.5893"W	17800.59	352.712	0.30	-0.22	0.20
23566.00	90.950	343.540	5707.52	17654.41	17747.03	-2284.31	1733209.78	14594413.19	40°11'07.3747"N	80°40'03.9232"W	17893.44	352.666	0.74	-0.53	-0.51
23661.00	90.710	344.410	5706.14	17749.40	17838.33	-2310.53	1733183.56	14594504.45	40°11'08.2779"N	80°40'04.2566"W	17987.34	352.620	0.95	-0.25	0.92
23756.00	90.740	344.020	5704.94	17844.38	17929.74	-2336.37	1733157.73	14594595.82	40°11'09.1821"N	80°40'04.5852"W	18081.32	352.576	0.41	0.03	-0.41
23850.00	90.830	343.500	5703.66	17938.36	18019.98	-2362.66	1733131.46	14594686.03	40°11'10.0748"N	80°40'04.9195"W	18174.20	352.530	0.56	0.10	-0.55
23945.00	90.400	344.690	5702.64	18033.35	18111.33	-2388.69	1733105.44	14594777.35	40°11'10.9786"N	80°40'05.2505"W	18268.17	352.487	1.33	-0.45	1.25
24039.00	90.580	343.550	5701.83	18127.33	18201.74	-2414.41	1733079.73	14594867.72	40°11'11.8729"N	80°40'05.5775"W	18361.17	352.444	1.23	0.19	-1.21
24134.00	90.740	343.950	5700.74	18222.32	18292.94	-2440.99	1733053.16	14594958.88	40°11'12.7751"N	80°40'05.9156"W	18455.08	352.399	0.45	0.17	0.42
24229.00	90.800	344.160	5699.46	18317.31	18384.28	-2467.09	1733027.07	14595050.19	40°11'13.6787"N	80°40'06.2475"W	18549.07	352.357	0.23	0.06	0.22
24323.00	90.430	343.530	5698.45	18411.30	18474.56	-2493.24	1733000.93	14595140.43	40°11'14.5718"N	80°40'06.5801"W	18642.04	352.314	0.78	-0.39	-0.67
24418.00	90.800	344.260	5697.43	18506.28	18565.82	-2519.59	1732974.59	14595231.66	40°11'15.4747"N	80°40'06.9153"W	18736.01	352.272	0.86	0.39	0.77
24513.00	90.710	344.130	5696.18	18601.26	18657.22	-2545.46	1732948.73	14595323.03	40°11'16.3788"N	80°40'07.2442"W	18830.07	352.231	0.17	-0.09	-0.14
24607.00	91.050	343.500	5694.74	18695.25	18747.49	-2571.66	1732922.54	14595413.25	40°11'17.2718"N	80°40'07.5774"W	18923.05	352.189	0.76	0.36	-0.67
24702.00	90.980	343.650	5693.05	18790.23	18838.60	-2598.52	1732896.69	14595504.33	40°11'18.1731"N	80°40'07.9191"W	19016.97	352.146	0.17	-0.07	0.16
24796.00	90.950	343.400	5691.47	18884.22	18928.72	-2625.17	1732869.05	14595594.42	40°11'19.0647"N	80°40'08.2582"W	19109.90	352.104	0.27	-0.03	-0.27
24891.00	91.260	344.650	5689.64	18979.19	19020.04	-2651.31	1732842.92	14595685.70	40°11'19.9680"N	80°40'08.5907"W	19203.94	352.064	1.36	0.33	1.32

01/10/2021



Actual Wellpath Report

Franz Thoman OHI 605H AWP Proj: 25715

Page 11 of 13

RECEIVED
Office of Oil and Gas
JAN 29 2021
WV Department of
Environmental Protection



REFERENCE WELLPATH IDENTIFICATION

Operator	SWN PRODUCTION COMPANY, LLC	Well	Franz Thoman OHI 605H
Field	Ohio	API/Legal	
Facility	Franz Thoman OHI Pad	Wellbore	Franz Thoman OHI 605H AWB
Slot	Slot 605H		

WELLPATH DATA (280 stations) † = interpolated, ‡ = extrapolated station

MD [ft]	Inclination [°]	Azimuth [°]	TVD [ft]	Vert Sect [ft]	North [ft]	East [ft]	Grid East [US ft]	Grid North [US ft]	Latitude	Longitude	Closure Dist [ft]	Closure Dir [°]	DLS ["/100ft]	Build Rate ["/100ft]	Turn Rate ["/100ft]
24986.00	91.080	343.810	5687.70	19074.16	19111.44	-2677.13	1732817.11	14595777.07	40°11'20.8722"N	80°40'8.9189"W	19298.04	352.026	0.90	-0.19	-0.88
25080.00	90.890	344.180	5686.08	19168.14	19201.78	-2703.04	1732791.21	14595867.37	40°11'21.7659"N	80°40'9.2485"W	19391.10	351.987	0.44	-0.20	0.39
25175.00	90.680	343.570	5684.78	19263.12	19293.04	-2729.42	1732764.84	14595958.59	40°11'22.6687"N	80°40'9.5840"W	19485.15	351.948	0.68	-0.22	-0.64
25270.00	90.620	344.260	5683.70	19358.11	19384.31	-2755.74	1732738.55	14596049.83	40°11'23.5716"N	80°40'9.9188"W	19579.21	351.909	0.73	-0.06	0.73
25364.00	90.660	343.920	5682.64	19452.09	19474.70	-2781.51	1732712.77	14596140.19	40°11'24.4658"N	80°40'10.2464"W	19672.34	351.872	0.37	0.06	-0.36
25459.00	90.460	343.600	5681.69	19547.09	19565.91	-2808.07	1732686.22	14596231.36	40°11'25.3681"N	80°40'10.5844"W	19766.39	351.833	0.41	-0.23	-0.34
25554.00	90.150	344.260	5681.19	19642.08	19657.20	-2834.37	1732659.93	14596322.61	40°11'26.2711"N	80°40'10.9189"W	19860.49	351.795	0.77	-0.33	0.69
25648.00	90.400	343.720	5680.73	19736.07	19747.55	-2860.30	1732634.01	14596412.92	40°11'27.1649"N	80°40'11.2486"W	19953.62	351.758	0.63	0.27	-0.57
25690.00	90.310	344.570	5680.47	19778.06	19787.95	-2871.77	1732622.54	14596453.31	40°11'27.5646"N	80°40'11.3945"W	19995.25	351.742	2.04	-0.21	2.02
25715.00‡	90.310	344.570	5680.34	19803.06	19812.05	-2878.42	1732615.90	14596477.40	40°11'27.8030"N	80°40'11.4791"W	20020.05	351.734	0.00	0.00	0.00

HOLE & CASING SECTIONS - Ref Wellbore: Franz Thoman OHI 605H AWB Ref Wellpath: Franz Thoman OHI 605H AWP Proj: 25715'

String/Diameter	Start MD [ft]	End MD [ft]	Interval [ft]	Start TVD [ft]	End TVD [ft]	Start N/S [ft]	Start E/W [ft]	End N/S [ft]	End E/W [ft]
20in Conductor	26.00	100.00	74.00	26.00	100.00	0.00	0.00	-0.02	0.06
17.5in Open Hole	100.00	408.00	308.00	100.00	408.00	-0.02	0.06	-0.47	-0.53
13.375in Casing Surface	26.00	408.00	382.00	26.00	408.00	0.00	0.00	-0.47	-0.53
12.25in Open Hole	408.00	1747.00	1339.00	408.00	1725.64	-0.47	-0.53	139.85	130.87
9.625in Casing Intermediate	26.00	1747.00	1721.00	26.00	1725.64	0.00	0.00	139.85	130.87
8.75in Open Hole	1747.00	5875.00	4128.00	1725.64	5240.08	139.85	130.87	1220.64	1983.29
8.5in Open Hole	5875.00	25715.00	19840.00	5240.08	5680.34	1220.64	1983.29	19812.05	-2878.42
5.5in Casing Production	26.00	25715.00	25689.00	26.00	5680.34	0.00	0.00	19812.05	-2878.42

09/10/2021

REFERENCE WELLPATH IDENTIFICATION

Operator	SWN PRODUCTION COMPANY, LLC		Well	Franz Thoman OHI 605H	
Field	Ohio		API/Legal		
Facility	Franz Thoman OHI Pad		Wellbore	Franz Thoman OHI 605H AWB	
Slot	Slot 605H				

TARGETS

Name	TVD [ft]	North [ft]	East [ft]	Grid East [US ft]	Grid North [US ft]	Latitude	Longitude	Shape
Franz Thoman OHI 605H BHL Rev-4	5680.99	19806.59	-2896.26	1732598.06	14596471.94	40°11'27.7497"N	80°40'11.7092"W	point
Franz Thoman OHI 605H LP Rev-2	5886.00	2062.51	2429.19	1737921.43	14578734.81	40°08'32.2022"N	80°39'3.9861"W	point
Franz Thoman OHI 605H Hardline 1	6000.00	805.21	1704.46	1737196.98	14577478.00	40°08'19.8055"N	80°39'13.3810"W	point
Franz Thoman OHI 605H Hardline 2	6000.00	7757.37	775.47	1736268.36	14584427.44	40°09'28.5423"N	80°39'24.9967"W	point

WELLPATH COMPOSITION - Ref Wellbore: Franz Thoman OHI 605H AWB Ref Wellpath: Franz Thoman OHI 605H AWP Proj: 25715'

Start MD [ft]	End MD [ft]	Positional Uncertainty Model	Log Name/Comment	Wellbore	Survey Date
26.00	400.00	Gyrodata 2015 - GC+WIR+DPIPE	01 Gyrodata Gyros <17 1/2"> (100'-400')	Franz Thoman OHI 605H AWB	3/20/2020
400.00	784.00	OWSG MWD rev2 + HRGM	02 Premier MWD <12 1/4"> (508'-784')	Franz Thoman OHI 605H AWB	3/20/2020
784.00	1043.00	Gyrodata 2015 - GC+WIR+DPIPE	03 Gyrodata Gyros <12 1/4"> (856'-1043')	Franz Thoman OHI 605H AWB	3/20/2020
1043.00	1683.00	OWSG MWD rev2 + HRGM	04 Premier MWD <12 1/4"> (1154'-1683')	Franz Thoman OHI 605H AWB	3/20/2020
1683.00	5806.00	OWSG MWD rev2 + HRGM	05 Premier MWD <8 3/4"> (1774'-5806')	Franz Thoman OHI 605H AWB	3/20/2020
5806.00	25715.00	BH AutoTrak Curve (2019) (Short spacing)	06 BH AT Curve <8 1/2"> (5888'-25690')	Franz Thoman OHI 605H AWB	3/20/2020

09/10/2021

RECEIVED
Office of Oil and Gas

JAN 29 2021

WV Department of
Environmental Protection



Actual Wellpath Report
 Franz Thoman OHI 605H AWP Proj: 25715'
 Page 13 of 13



REFERENCE WELLPATH IDENTIFICATION	
Operator	SWN PRODUCTION COMPANY, LLC
Field	Ohio
Facility	Franz Thoman OHI Pad
Slot	Slot 605H
Well	Franz Thoman OHI 605H
API/Legal	
Wellbore	Franz Thoman OHI 605H AWB

COMMENTS
<p>Wellpath general comments API: 47-069-00314-0000 BH Job #: 110339018A Rig: SDC 40 Duration: 03/21/2020 - 03/27/2020</p>

RECEIVED
 Office of Oil and Gas
 JAN 29 2021
 WV Department of
 Environmental Protection

RECEIVED
 Office of Oil and Gas
 JAN 29 2021
 WV Department of
 Environmental Protection

09/10/2021