

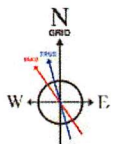
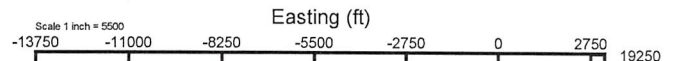
Plot reference wellbore is Shannon Fields OHI 1H AWP Proj 25108'	Grid System: NAD83 / UTM Zone 17 North, US feet
True vertical depths are referenced to SDC 40 (KB)	North Reference: Grid north
Reference wellbore measured depths are referenced to SDC 40 (KB)	Scale: True distance
SDC 40 (KB) to Mean Sea Level: 1262.11 feet	Coordinates are in feet referenced to SRT
Mean Sea Level to Ground level (At Slot: 1H): -1236.11 feet	Depths are in feet
Offset wellbore MDs are referenced to each plot's default MD datum	Created by: scorden on 2022-11-18, Database: WA_MPL_EASTERNUS_Debs

Location Information					
Facility Name	Grid East (US ft)	Grid North (US ft)	Latitude	Longitude	
Shannon Fields OHI Pad	1736232.340	14559062.680	40°05'17.7900"N	80°39'26.7200"W	
Slot	Local N (ft)	Local E (ft)	Grid East (US ft)	Grid North (US ft)	Longitude
1H	57.33	-114.45	1736117.930	14559119.990	40°05'18.3609"N 80°39'28.1898"W
Comment	08.27.2021 Change well center as per new geological prog				
SDC 40 (KB) to Ground level (At Slot: 1H)	26ft				
Mean Sea Level to Ground level (At Slot: 1H)	-1236.11ft				
SDC 40 (KB) to Mean Sea Level	1262.11ft				

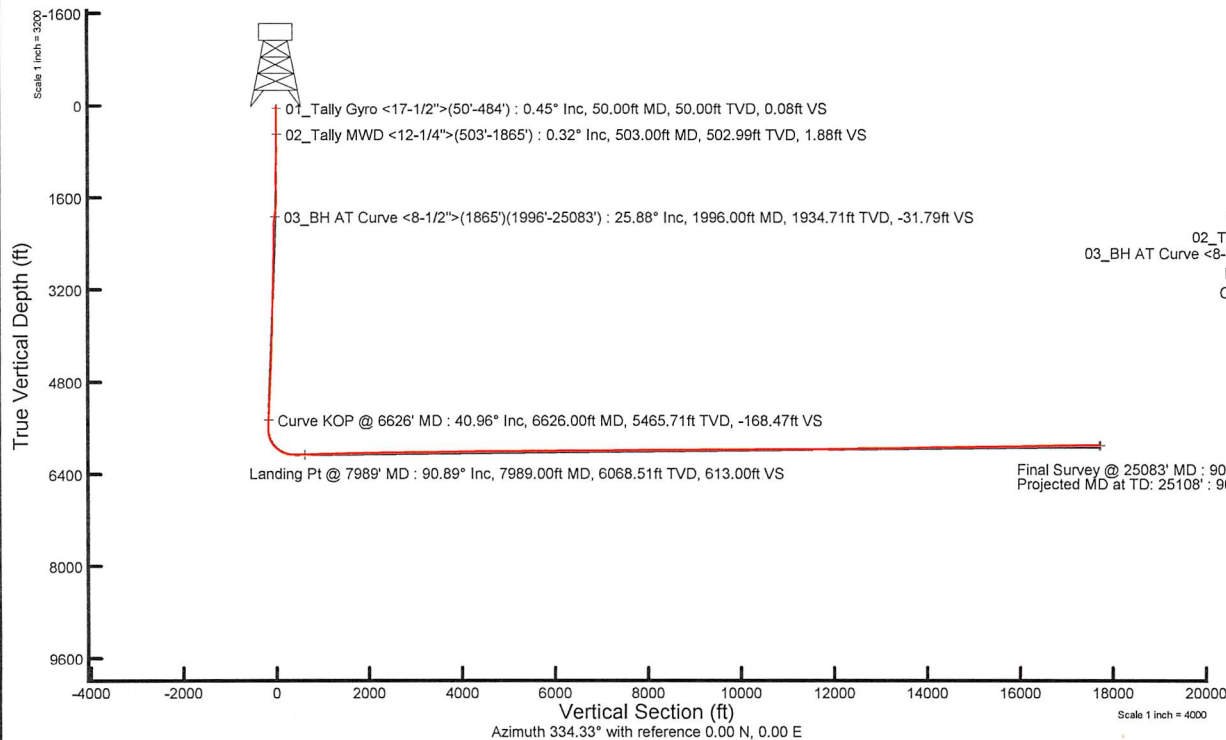
Bottom Hole Location					
MD (ft)	Inc (°)	Az (°)	TVD (ft)	Local N (ft)	Local E (ft)
25108.00	90.620	334.910	5908.67	14300.75	-11173.73
				Grid East (US ft)	Grid North (US ft)
				1724948.58	14573415.14
				Latitude	Longitude
				40°07'40.0822"N	80°41'51.3274"W

API: 47-069-00344-0000
BH Job#: 111469801
Rig: SDC 40
Duration: 11/11/2022-11/17/2022

Projected MD at TD: 25108' : 5908.67ft TVD, 14300.75ft N, 11173.73ft W
Final Survey @ 25083' MD : 5908.94ft TVD, 14278.11ft N, 11163.13ft W



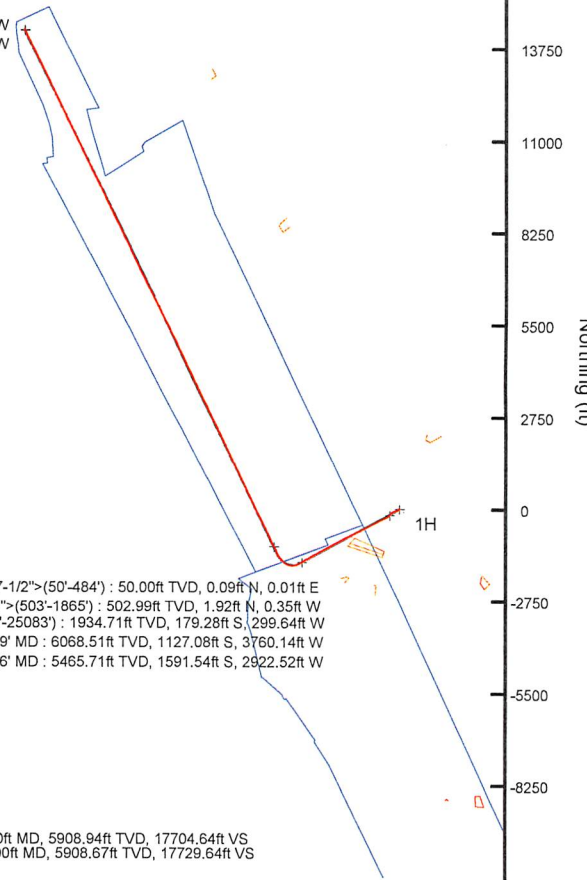
HDGM2022v1.0 (1900.0 to 2023.0) Dip: 67.01° Field: 52102.9 nT
Magnetic North is 8.09 degrees West of True North (at 10/31/2022)
Grid North is 0.22 degrees East of True North
To correct azimuth from True to Grid subtract 0.22 degrees
To correct azimuth from Magnetic to Grid subtract 8.31 degrees



01_Tally Gyro <17-1/2">(50'-484') : 0.45° Inc, 50.00ft MD, 50.00ft TVD, 0.08ft VS
02_Tally MWD <12-1/4">(503'-1865') : 0.32° Inc, 503.00ft MD, 502.99ft TVD, 1.88ft VS
03_BH AT Curve <8-1/2">(1865')(1996'-25083') : 25.88° Inc, 1996.00ft MD, 1934.71ft TVD, -31.79ft VS
Curve KOP @ 6626' MD : 40.96° Inc, 6626.00ft MD, 5465.71ft TVD, -168.47ft VS
Landing Pt @ 7989' MD : 90.89° Inc, 7989.00ft MD, 6068.51ft TVD, 613.00ft VS

01_Tally Gyro <17-1/2">(50'-484') : 50.00ft TVD, 0.09ft N, 0.01ft E
02_Tally MWD <12-1/4">(503'-1865') : 502.99ft TVD, 1.92ft N, 0.35ft W
03_BH AT Curve <8-1/2">(1865')(1996'-25083') : 1934.71ft TVD, 179.28ft S, 299.64ft W
Landing Pt @ 7989' MD : 6068.51ft TVD, 1127.08ft S, 3760.14ft W
Curve KOP @ 6626' MD : 5465.71ft TVD, 1591.54ft S, 2922.52ft W

Final Survey @ 25083' MD : 90.62° Inc, 25083.00ft MD, 5908.94ft TVD, 17704.64ft VS
Projected MD at TD: 25108' : 90.62° Inc, 25108.00ft MD, 5908.67ft TVD, 17729.64ft VS





Well Name:

Shannon Fields OHI 1H

47069003440000

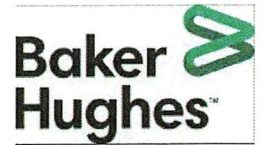
LITHOLOGY/FORMATION	TOP DEPTH, MD (FT)	TOP DEPTH, TVD (FT)	BOTTOM DEPTH, MD (FT)	BOTTOM DEPTH, TVD (FT)	QUANTITY AND TYPE OF FLUID
Base of Fresh Water	0.00	0.00	352.00	352.00	
Top of Salt Water	602.00	602.00	NA	NA	
Pittsburgh Coal	504.00	504.00	509.00	509.00	
Pottsville (ss)	682.00	682.00	742.00	742.00	
Raven Cliff (ss)	954.00	954.00	1158.00	1158.00	
Maxton (ss)	1406.00	1396.00	1557.00	1538.00	
Big Injun (ss)	1557.00	1538.00	2190.00	2107.00	
Berea (siltstone)	2190.00	2107.00	2231.00	2141.00	
Rhinestreet (shale)	6822.00	5612.00	7013.00	5751.00	
Cashaqua (shale)	7013.00	5751.00	7094.00	5806.00	
Middlesex (shale)	7094.00	5806.00	7202.00	5876.00	
Burket (shale)	7202.00	5876.00	7229.00	5892.00	
Tully (ls)	7229.00	5892.00	7309.00	5938.00	
Mahantango (shale)	7309.00	5938.00	7496.00	6022.00	
Marcellus (shale)	7496.00	6022.00	NA	NA	GAS

RECEIVED
Office Of Oil and Gas
APR 18 2023
WV Department of
Environmental Protection



Actual Wellpath Report

Shannon Fields OHI 1H AWP Proj: 25108'
Page n of nn



REFERENCE WELLPATH IDENTIFICATION			
Operator	SWN PRODUCTION COMPANY, LLC	Well	Shannon Fields OHI 1H
Field	Ohio	API	47-069-00344-0000
Facility	Shannon Fields OHI Pad	Wellbore	Shannon Fields OHI 1H AWB
Slot	1H		

REPORT SETUP INFORMATION			
Projection System	NAD83 / UTM Zone 17 North, US feet	Software System	WellArchitect@ 6.0
North Reference	Grid	User	Scurdan
Scale	0.999610	Report Generated	11/18/2022 at 10:56:57 AM
Convergence at slot	0.22° East	Database	WA_MPL_EASTERNUS_Defn

WELLPATH LOCATION						
	Local coordinates		Grid coordinates		Geographic coordinates	
	North[ft]	East[ft]	Easting[US ft]	Northing[US ft]	Latitude	Longitude
Slot Location	57.33	-114.45	1736117.93	14559119.99	40°05'18.3609"N	80°39'28.1898"W
Facility Reference Pt			1736232.34	14559062.68	40°05'17.7900"N	80°39'26.7200"W
Field Reference Pt			0.00	0.00	0°00'0.0000"	85°29'19.4780"W

WELLPATH DATUM			
Calculation method	Minimum curvature	SDC 40 (KB) to Facility Vertical Datum	1262.11ft
Horizontal Reference Pt	Slot	SDC 40 (KB) to Mean Sea Level	1262.11ft
Vertical Reference Pt	SDC 40 (KB)	SDC 40 (KB) to Ground Level at Slot (1H)	26.00ft
MD Reference Pt	SDC 40 (KB)	Section Origin	N 0.00, E 0.00 ft
Field Vertical Reference	Mean Sea Level	Section Azimuth	334.33°

09/15/2023



Actual Wellpath Report

Shannon Fields OHI 1H AWP Proj: 25108'
Page n of nn



REFERENCE WELLPATH IDENTIFICATION			
Operator	SWN PRODUCTION COMPANY, LLC	Well	Shannon Fields OHI 1H
Field	Ohio	API	47-069-00344-0000
Facility	Shannon Fields OHI Pad	Wellbore	Shannon Fields OHI 1H AWB
Slot	1H		

WELLPATH DATA (276 stations) † = interpolated, ‡ = extrapolated station

MD [ft]	Inclination [°]	Azimuth [°]	TVD [ft]	Vert Sect [ft]	North [ft]	East [ft]	Grid East [US ft]	Grid North [US ft]	Latitude	Longitude	Closure Dist [ft]	Closure Dir [°]	DLS [°/100ft]	Build Rate [°/100ft]	Turn Rate [°/100ft]
0.00	0.00	8.720	0.00	0.00	0.00	0.00	1736117.93	14559119.99	40°05'18.3609"N	80°39'28.1898"W	0.00	0.000	0.00	0.00	0.00
26.00	0.00	8.720	26.00	0.00	0.00	0.00	1736117.93	14559119.99	40°05'18.3609"N	80°39'28.1898"W	0.00	0.000	0.00	0.00	0.00
50.00	0.450	8.720	50.00	0.08	0.09	0.01	1736117.94	14559120.08	40°05'18.3619"N	80°39'28.1896"W	0.09	8.720	1.87	1.88	0.00
100.00	0.490	6.830	100.00	0.42	0.50	0.07	1736118.00	14559120.49	40°05'18.3659"N	80°39'28.1889"W	0.50	7.919	0.09	0.08	-3.78
150.00	0.380	349.480	150.00	0.76	0.87	0.06	1736117.99	14559120.86	40°05'18.3696"N	80°39'28.1889"W	0.88	4.226	0.34	-0.22	-34.70
200.00	0.290	18.990	200.00	1.01	1.16	0.08	1736118.01	14559121.15	40°05'18.3724"N	80°39'28.1887"W	1.16	3.734	0.38	-0.18	59.02
250.00	0.220	1.680	250.00	1.19	1.37	0.12	1736118.05	14559121.36	40°05'18.3745"N	80°39'28.1882"W	1.38	4.975	0.21	-0.14	-34.62
300.00	0.090	312.060	300.00	1.31	1.50	0.09	1736118.02	14559121.48	40°05'18.3757"N	80°39'28.1885"W	1.50	3.566	0.35	-0.26	-99.24
350.00	0.180	328.160	350.00	1.42	1.59	0.02	1736117.95	14559121.58	40°05'18.3766"N	80°39'28.1894"W	1.59	0.815	0.19	0.18	32.20
400.00	0.200	288.110	399.99	1.56	1.68	-0.10	1736117.83	14559121.67	40°05'18.3776"N	80°39'28.1910"W	1.69	356.538	0.26	0.04	-80.10
450.00	0.170	348.470	449.99	1.69	1.78	-0.20	1736117.73	14559121.77	40°05'18.3786"N	80°39'28.1922"W	1.79	353.611	0.38	-0.06	120.72
484.00	0.250	305.860	483.99	1.81	1.87	-0.27	1736117.66	14559121.86	40°05'18.3795"N	80°39'28.1931"W	1.89	351.813	0.50	0.24	-125.32
503.00	0.320	292.690	502.99	1.88	1.92	-0.35	1736117.58	14559121.91	40°05'18.3799"N	80°39'28.1942"W	1.95	349.601	0.50	0.37	-69.32
594.00	1.650	270.090	593.98	2.64	2.02	-1.90	1736116.03	14559122.01	40°05'18.3810"N	80°39'28.2141"W	2.77	316.796	1.49	1.46	-24.84
684.00	3.950	265.510	683.87	4.33	1.78	-6.28	1736111.65	14559121.77	40°05'18.3788"N	80°39'28.2705"W	6.53	285.808	2.57	2.56	-5.09
776.00	6.160	243.780	775.51	5.42	-0.65	-13.87	1736104.06	14559119.34	40°05'18.3550"N	80°39'28.3683"W	13.89	267.316	3.14	2.40	-23.62
867.00	7.470	229.140	865.87	3.83	-6.68	-22.73	1736095.21	14559113.31	40°05'18.2958"N	80°39'28.4825"W	23.69	253.625	2.38	1.44	-16.09
957.00	7.010	228.640	955.15	0.81	-14.13	-31.27	1736086.67	14559105.86	40°05'18.2224"N	80°39'28.5928"W	34.32	245.679	0.52	-0.51	-0.56
1049.00	8.290	223.520	1046.33	-3.07	-22.65	-40.06	1736077.89	14559097.34	40°05'18.1386"N	80°39'28.7062"W	46.02	240.509	1.57	1.39	-5.57
1140.00	10.160	228.460	1136.15	-7.59	-32.73	-50.58	1736067.37	14559087.27	40°05'18.0394"N	80°39'28.8422"W	60.25	237.090	2.23	2.05	5.43
1231.00	10.620	238.710	1225.67	-10.61	-42.41	-63.76	1736054.20	14559077.59	40°05'17.9442"N	80°39'29.0122"W	76.57	236.366	2.09	0.51	11.26
1322.00	12.590	250.850	1314.82	-10.30	-50.02	-80.29	1736037.67	14559069.99	40°05'17.8696"N	80°39'29.2253"W	94.60	238.077	3.44	2.16	13.34
1412.00	16.610	255.860	1401.90	-6.62	-56.39	-102.04	1736015.93	14559063.63	40°05'17.8076"N	80°39'29.5055"W	116.59	241.076	4.68	4.47	5.57
1503.00	21.050	253.610	1488.01	-1.38	-64.18	-130.35	1735987.63	14559055.84	40°05'17.7317"N	80°39'29.8700"W	145.29	243.786	4.94	4.88	-2.47
1594.00	24.530	249.190	1571.90	2.86	-75.51	-163.70	1735954.30	14559044.51	40°05'17.6210"N	80°39'30.2997"W	180.27	245.238	4.26	3.82	-4.86
1684.00	25.900	241.150	1653.34	3.35	-91.63	-198.39	1735919.62	14559028.39	40°05'17.4629"N	80°39'30.7468"W	218.53	245.209	4.10	1.52	-8.93
1775.00	26.430	233.630	1735.04	-1.51	-113.24	-232.12	1735885.90	14559006.80	40°05'17.2507"N	80°39'31.1818"W	258.27	243.994	3.69	0.58	-8.26
1865.00	24.710	226.300	1816.24	-11.06	-138.12	-261.85	1735856.18	14558981.92	40°05'17.0059"N	80°39'31.5656"W	296.05	242.189	4.00	-1.91	-8.14
1996.00	25.880	218.960	1934.71	-31.79	-179.28	-299.64	1735818.41	14558940.78	40°05'16.6006"N	80°39'32.0538"W	349.18	239.107	2.55	0.89	-5.60
2087.00	27.870	226.630	2015.90	-46.77	-209.34	-327.60	1735790.46	14558910.73	40°05'16.3046"N	80°39'32.4150"W	388.77	237.420	4.39	2.19	8.43

09/15/2023



Actual Wellpath Report

Shannon Fields OHI 1H AWP Proj: 25108'
Page n of nn

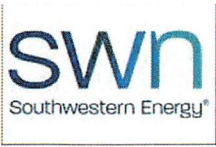


REFERENCE WELLPATH IDENTIFICATION			
Operator	SWN PRODUCTION COMPANY, LLC	Well	Shannon Fields OHI 1H
Field	Ohio	API	47-069-00344-0000
Facility	Shannon Fields OHI Pad	Wellbore	Shannon Fields OHI 1H AWB
Slot	1H		

WELLPATH DATA (276 stations)

MD [ft]	Inclination [°]	Azimuth [°]	TVD [ft]	Vert Sect [ft]	North [ft]	East [ft]	Grid East [US ft]	Grid North [US ft]	Latitude	Longitude	Closure Dist [ft]	Closure Dir [°]	DLS [°/100ft]	Build Rate [°/100ft]	Turn Rate [°/100ft]
2177.00	28.710	237.260	2095.20	-55.83	-235.50	-361.09	1735756.98	14558884.59	40°05'16.0474"N	80°39'32.8473"W	431.10	236.889	5.67	0.93	11.81
2270.00	32.720	245.820	2175.18	-57.93	-257.89	-402.85	1735715.24	14558862.20	40°05'15.8277"N	80°39'33.3856"W	478.33	237.374	6.37	4.31	9.20
2360.00	34.240	248.560	2250.25	-55.43	-277.11	-448.61	1735669.49	14558842.99	40°05'15.6395"N	80°39'33.9753"W	527.30	238.296	2.38	1.69	3.04
2452.00	36.450	244.520	2325.30	-53.43	-298.34	-497.39	1735620.74	14558821.77	40°05'15.4316"N	80°39'34.6039"W	580.00	239.044	3.50	2.40	-4.39
2542.00	38.480	242.360	2396.73	-54.30	-322.83	-546.34	1735571.81	14558797.29	40°05'15.1914"N	80°39'35.2349"W	634.59	239.421	2.69	2.26	-2.40
2633.00	40.420	242.320	2467.00	-56.31	-349.67	-597.55	1735520.62	14558770.45	40°05'14.9281"N	80°39'35.8951"W	692.34	239.665	2.13	2.13	-0.04
2723.00	41.680	242.710	2534.87	-58.18	-376.95	-649.98	1735468.20	14558743.19	40°05'14.6605"N	80°39'36.5710"W	751.37	239.889	1.43	1.40	0.43
2816.00	41.720	243.000	2604.31	-59.77	-405.17	-705.03	1735413.17	14558714.98	40°05'14.3837"N	80°39'37.2807"W	813.16	240.115	0.21	0.04	0.31
2907.00	41.770	243.180	2672.20	-61.08	-432.60	-759.06	1735359.17	14558687.56	40°05'14.1147"N	80°39'37.9772"W	873.68	240.321	0.14	0.05	0.20
2998.00	41.770	242.430	2740.07	-62.70	-460.30	-812.98	1735305.27	14558659.87	40°05'13.8430"N	80°39'38.6723"W	934.24	240.482	0.55	0.00	-0.82
3088.00	41.730	242.810	2807.22	-64.49	-487.86	-866.19	1735252.08	14558632.32	40°05'13.5726"N	80°39'39.3583"W	994.13	240.611	0.28	-0.04	0.42
3179.00	41.680	242.950	2875.16	-66.02	-515.46	-920.08	1735198.21	14558604.73	40°05'13.3019"N	80°39'40.0529"W	1054.63	240.741	0.12	-0.05	0.15
3270.00	41.730	242.440	2943.10	-67.75	-543.23	-973.87	1735144.44	14558576.97	40°05'13.0295"N	80°39'40.7464"W	1115.14	240.847	0.38	0.05	-0.56
3361.00	41.770	243.260	3010.99	-69.31	-570.88	-1027.79	1735090.54	14558549.33	40°05'12.7583"N	80°39'41.4414"W	1175.70	240.950	0.60	0.04	0.90
3452.00	41.900	242.800	3078.79	-70.69	-598.41	-1081.89	1735036.47	14558521.82	40°05'12.4883"N	80°39'42.1388"W	1236.35	241.052	0.37	0.14	-0.51
3543.00	41.770	242.480	3146.59	-72.48	-626.30	-1135.79	1734982.58	14558493.93	40°05'12.2147"N	80°39'42.8337"W	1297.03	241.127	0.27	-0.14	-0.35
3633.00	41.630	242.300	3213.79	-74.50	-654.05	-1188.85	1734929.55	14558466.20	40°05'11.9425"N	80°39'43.5176"W	1356.88	241.182	0.20	-0.16	-0.20
3724.00	41.730	242.530	3281.75	-76.53	-682.07	-1242.48	1734875.94	14558438.19	40°05'11.6676"N	80°39'44.2090"W	1417.38	241.235	0.20	0.11	0.25
3814.00	41.590	243.240	3348.99	-78.04	-709.34	-1295.73	1734822.71	14558410.93	40°05'11.4001"N	80°39'44.8954"W	1477.18	241.302	0.55	-0.16	0.79
3905.00	41.760	243.130	3416.96	-79.24	-736.63	-1349.73	1734768.73	14558383.65	40°05'11.1324"N	80°39'45.5915"W	1537.66	241.376	0.20	0.19	-0.12
3996.00	40.850	242.940	3485.32	-80.60	-763.87	-1403.26	1734715.22	14558356.42	40°05'10.8653"N	80°39'46.2816"W	1597.70	241.438	1.01	-1.00	-0.21
4087.00	40.730	242.930	3554.22	-82.05	-790.92	-1456.20	1734662.30	14558329.38	40°05'10.5999"N	80°39'46.9640"W	1657.13	241.492	0.13	-0.13	-0.01
4178.00	40.800	242.150	3623.14	-83.90	-818.32	-1508.93	1734609.60	14558301.99	40°05'10.3311"N	80°39'47.6437"W	1716.54	241.528	0.56	0.08	-0.86
4268.00	40.540	243.050	3691.41	-85.68	-845.31	-1561.00	1734557.54	14558275.01	40°05'10.0663"N	80°39'48.3149"W	1775.18	241.564	0.71	-0.29	1.00
4359.00	39.930	242.950	3760.87	-87.04	-871.99	-1613.37	1734505.19	14558248.34	40°05'9.8046"N	80°39'48.9900"W	1833.94	241.610	0.67	-0.67	-0.11
4449.00	39.460	242.960	3830.13	-88.42	-898.13	-1664.57	1734454.02	14558222.21	40°05'9.5482"N	80°39'49.6500"W	1891.41	241.651	0.52	-0.52	0.01
4540.00	40.800	241.470	3899.70	-90.59	-925.48	-1716.45	1734402.16	14558194.87	40°05'9.2799"N	80°39'50.3188"W	1950.05	241.667	1.81	1.47	-1.64
4631.00	40.270	241.980	3968.86	-93.28	-953.50	-1768.53	1734350.09	14558166.87	40°05'9.0050"N	80°39'50.9903"W	2009.19	241.669	0.69	-0.58	0.56
4721.00	40.160	241.870	4037.59	-95.72	-980.84	-1819.80	1734298.84	14558139.53	40°05'8.7366"N	80°39'51.6512"W	2067.30	241.676	0.15	-0.12	-0.12
4813.00	40.360	241.500	4107.80	-98.47	-1009.04	-1872.14	1734246.52	14558111.34	40°05'8.4599"N	80°39'52.3260"W	2126.76	241.676	0.34	0.22	-0.40

09/15/2023



Actual Wellpath Report

Shannon Fields OHI 1H AWP Proj: 25108'
Page n of nn



REFERENCE WELLPATH IDENTIFICATION			
Operator	SWN PRODUCTION COMPANY, LLC	Well	Shannon Fields OHI 1H
Field	Ohio	API	47-069-00344-0000
Facility	Shannon Fields OHI Pad	Wellbore	Shannon Fields OHI 1H AWB
Slot	1H		

WELLPATH DATA (276 stations)																
MD [ft]	Inclination [°]	Azimuth [°]	TVD [ft]	Vert Sect [ft]	North [ft]	East [ft]	Grid East [US ft]	Grid North [US ft]	Latitude	Longitude	Closure Dist [ft]	Closure Dir [°]	DLS [°/100ft]	Build Rate [°/100ft]	Turn Rate [°/100ft]	
4903.00	41.910	241.540	4175.58	-101.37	-1037.28	-1924.18	1734194.50	14558083.12	40°05'8.1829"N	80°39'52.9969"W	2185.96	241.672	1.72	1.72	0.04	
4994.00	42.170	241.400	4243.16	-104.41	-1066.38	-1977.72	1734140.98	14558054.03	40°05'7.8972"N	80°39'53.6871"W	2246.90	241.667	0.30	0.29	-0.15	
5085.00	42.140	241.370	4310.62	-107.55	-1095.63	-2031.33	1734087.39	14558024.79	40°05'7.6102"N	80°39'54.3783"W	2307.97	241.659	0.04	-0.03	-0.03	
5176.00	42.050	240.900	4378.15	-110.95	-1125.08	-2084.76	1734033.99	14557995.35	40°05'7.3212"N	80°39'55.0671"W	2368.97	241.646	0.36	-0.10	-0.52	
5266.00	42.150	241.410	4444.93	-114.29	-1154.19	-2137.61	1733981.16	14557966.25	40°05'7.0355"N	80°39'55.7484"W	2429.31	241.633	0.40	0.11	0.57	
5357.00	42.050	241.930	4512.45	-117.12	-1183.14	-2191.31	1733927.48	14557937.31	40°05'6.7513"N	80°39'56.4407"W	2490.31	241.634	0.40	-0.11	0.57	
5447.00	41.820	241.390	4579.40	-119.92	-1211.69	-2244.33	1733874.56	14557908.77	40°05'6.4712"N	80°39'57.1232"W	2550.46	241.635	0.48	-0.26	-0.60	
5539.00	42.030	241.350	4647.85	-123.10	-1241.14	-2298.20	1733820.63	14557879.33	40°05'6.1821"N	80°39'57.8188"W	2611.93	241.629	0.23	0.23	-0.04	
5629.00	42.250	240.880	4714.58	-126.48	-1270.31	-2351.07	1733767.78	14557850.17	40°05'5.8958"N	80°39'58.5004"W	2672.31	241.617	0.43	0.24	-0.52	
5720.00	40.930	241.740	4782.64	-129.67	-1299.32	-2404.06	1733714.81	14557821.18	40°05'5.6112"N	80°39'59.1835"W	2732.71	241.610	1.58	-1.45	0.95	
5810.00	41.090	241.210	4850.56	-132.61	-1327.52	-2455.95	1733662.95	14557792.99	40°05'5.3344"N	80°39'59.8524"W	2791.77	241.607	0.43	0.18	-0.59	
5902.00	41.090	241.950	4919.90	-135.51	-1356.30	-2509.12	1733609.79	14557764.23	40°05'5.0520"N	80°40'0.5379"W	2852.24	241.607	0.53	0.00	0.80	
5992.00	41.040	240.700	4987.75	-138.61	-1384.66	-2560.99	1733557.94	14557735.87	40°05'4.7736"N	80°40'1.2066"W	2911.35	241.601	0.91	-0.06	-1.39	
6083.00	40.930	240.380	5056.45	-142.56	-1414.02	-2612.96	1733505.99	14557706.53	40°05'4.4854"N	80°40'1.8766"W	2971.03	241.580	0.26	-0.12	-0.35	
6173.00	41.080	239.940	5124.37	-146.85	-1443.40	-2664.18	1733454.79	14557677.16	40°05'4.1969"N	80°40'2.5370"W	3030.06	241.552	0.36	0.17	-0.49	
6264.00	41.120	241.080	5192.94	-150.84	-1472.85	-2716.25	1733402.74	14557647.72	40°05'3.9079"N	80°40'3.2083"W	3089.87	241.532	0.82	0.04	1.25	
6354.00	41.100	239.820	5260.75	-154.84	-1502.03	-2767.73	1733351.29	14557618.55	40°05'3.6214"N	80°40'3.8720"W	3149.03	241.512	0.92	-0.02	-1.40	
6445.00	41.250	240.100	5329.25	-159.41	-1532.02	-2819.59	1733299.44	14557588.57	40°05'3.3269"N	80°40'4.5407"W	3208.92	241.483	0.26	0.16	0.31	
6535.00	41.030	239.660	5397.03	-164.00	-1561.73	-2870.81	1733248.25	14557558.87	40°05'3.0352"N	80°40'5.2010"W	3268.11	241.454	0.40	-0.24	-0.49	
6626.00	40.960	240.420	5465.71	-168.47	-1591.54	-2922.52	1733196.55	14557529.07	40°05'2.7425"N	80°40'5.8678"W	3327.79	241.428	0.55	-0.08	0.84	
6716.00	40.790	242.890	5533.77	-171.22	-1619.51	-2974.35	1733144.74	14557501.12	40°05'2.4681"N	80°40'6.5359"W	3386.67	241.432	1.81	-0.19	2.74	
6808.00	42.450	241.680	5602.55	-173.41	-1647.93	-3028.44	1733090.68	14557472.70	40°05'2.1892"N	80°40'7.2331"W	3447.77	241.447	2.00	1.80	-1.32	
6899.00	42.870	252.330	5669.55	-170.51	-1671.93	-3085.04	1733034.10	14557448.72	40°05'1.9541"N	80°40'7.9625"W	3508.96	241.545	7.94	0.46	11.70	
6990.00	45.130	260.880	5735.07	-157.01	-1686.45	-3146.44	1732972.73	14557434.20	40°05'1.8129"N	80°40'8.7530"W	3569.90	241.809	6.98	2.48	9.40	
7080.00	47.230	269.670	5797.44	-133.76	-1691.70	-3211.03	1732908.16	14557428.95	40°05'1.7633"N	80°40'9.5843"W	3629.40	242.218	7.42	2.33	9.77	
7171.00	50.660	280.860	5857.31	-98.44	-1685.25	-3279.13	1732840.08	14557435.40	40°05'1.8296"N	80°40'10.4602"W	3686.84	242.800	10.00	3.77	12.30	
7261.00	54.910	293.340	5911.87	-49.79	-1664.04	-3347.32	1732771.92	14557456.60	40°05'2.0417"N	80°40'11.3365"W	3738.13	243.567	12.00	4.72	13.87	
7351.00	59.460	304.250	5960.73	11.71	-1627.54	-3413.34	1732705.92	14557493.08	40°05'2.4048"N	80°40'12.1841"W	3781.51	244.507	11.36	5.06	12.12	
7442.00	65.400	312.680	6002.89	84.24	-1577.33	-3476.30	1732643.00	14557543.28	40°05'2.9033"N	80°40'12.9916"W	3817.41	245.594	10.48	6.53	9.26	
7532.00	71.450	317.190	6035.99	163.14	-1518.21	-3535.45	1732583.87	14557602.37	40°05'3.4897"N	80°40'13.7498"W	3847.64	246.760	8.18	6.72	5.01	

09/15/2023



Actual Wellpath Report

Shannon Fields OHI 1H AWP Proj: 25108'
Page n of nn



REFERENCE WELLPATH IDENTIFICATION			
Operator	SWN PRODUCTION COMPANY, LLC	Well	Shannon Fields OHI 1H
Field	Ohio	API	47-069-00344-0000
Facility	Shannon Fields OHI Pad	Wellbore	Shannon Fields OHI 1H AWB
Slot	1H		

WELLPATH DATA (276 stations)															
MD [ft]	Inclination [°]	Azimuth [°]	TVD [ft]	Vert Sect [ft]	North [ft]	East [ft]	Grid East [US ft]	Grid North [US ft]	Latitude	Longitude	Closure Dist [ft]	Closure Dir [°]	DLS [°/100ft]	Build Rate [°/100ft]	Turn Rate [°/100ft]
7624.00	78.660	324.000	6059.72	249.39	-1449.56	-3591.73	1732527.61	14557670.99	40°05'4.1701"N	80°40'14.4706"W	3873.21	248.022	10.61	7.84	7.40
7715.00	87.850	332.240	6070.42	339.06	-1372.94	-3639.31	1732480.04	14557747.58	40°05'4.9290"N	80°40'15.0791"W	3889.68	249.331	13.52	10.10	9.05
7806.00	91.020	334.980	6071.31	430.03	-1291.45	-3679.75	1732439.62	14557829.05	40°05'5.7359"N	80°40'15.5955"W	3899.79	250.661	4.60	3.48	3.01
7898.00	90.800	333.870	6069.85	522.02	-1208.47	-3719.46	1732399.93	14557911.99	40°05'6.5573"N	80°40'16.1024"W	3910.86	252.001	1.23	-0.24	-1.21
7989.00	90.890	333.020	6068.51	613.00	-1127.08	-3760.14	1732359.27	14557993.35	40°05'7.3631"N	80°40'16.6219"W	3925.42	253.314	0.94	0.10	-0.93
8080.00	89.690	332.810	6068.05	703.97	-1046.07	-3801.57	1732317.85	14558074.33	40°05'8.1652"N	80°40'17.1511"W	3942.86	254.615	1.34	-1.32	-0.23
8170.00	91.820	339.340	6066.86	793.86	-963.86	-3838.04	1732281.39	14558156.51	40°05'8.9789"N	80°40'17.6165"W	3957.22	255.903	7.63	2.37	7.26
8262.00	92.130	334.340	6063.69	885.69	-879.35	-3874.19	1732245.25	14558240.99	40°05'9.8154"N	80°40'18.0775"W	3972.74	257.212	5.44	0.34	-5.43
8350.00	90.990	333.880	6061.29	973.66	-800.21	-3912.60	1732206.86	14558320.09	40°05'10.5988"N	80°40'18.5680"W	3993.60	258.441	1.40	-1.30	-0.52
8440.00	91.110	333.850	6059.65	1063.64	-719.43	-3952.24	1732167.24	14558400.85	40°05'11.3986"N	80°40'19.0741"W	4017.19	259.683	0.14	0.13	-0.03
8531.00	90.370	333.210	6058.47	1154.62	-637.97	-3992.80	1732126.69	14558482.27	40°05'12.2050"N	80°40'19.5920"W	4043.45	260.922	1.08	-0.81	-0.70
8622.00	90.990	333.950	6057.39	1245.61	-556.48	-4033.29	1732086.22	14558563.72	40°05'13.0117"N	80°40'20.1091"W	4071.49	262.144	1.06	0.68	0.81
8714.00	90.800	333.850	6055.95	1337.59	-473.88	-4073.75	1732045.77	14558646.30	40°05'13.8296"N	80°40'20.6258"W	4101.22	263.365	0.23	-0.21	-0.11
8806.00	91.690	334.000	6053.95	1429.57	-391.26	-4114.18	1732005.36	14558728.88	40°05'14.6475"N	80°40'21.1421"W	4132.75	264.567	0.98	0.97	0.16
8896.00	91.140	333.980	6051.73	1519.54	-310.40	-4153.64	1731965.92	14558809.71	40°05'15.4480"N	80°40'21.6459"W	4165.22	265.726	0.61	-0.61	-0.02
8987.00	91.200	334.150	6049.87	1610.52	-228.58	-4193.43	1731926.14	14558891.50	40°05'16.2579"N	80°40'22.1540"W	4199.65	266.880	0.20	0.07	0.19
9078.00	90.400	332.840	6048.60	1701.50	-147.16	-4234.04	1731885.55	14558972.89	40°05'17.0641"N	80°40'22.6725"W	4236.59	268.009	1.69	-0.88	-1.44
9169.00	90.550	332.720	6047.85	1792.46	-66.24	-4275.66	1731843.95	14559053.78	40°05'17.8652"N	80°40'23.2042"W	4276.17	269.112	0.21	0.16	-0.13
9260.00	91.170	333.890	6046.48	1883.43	15.05	-4316.53	1731803.09	14559135.04	40°05'18.6700"N	80°40'23.7263"W	4316.56	270.200	1.45	0.68	1.29
9350.00	90.800	333.460	6044.94	1973.41	95.71	-4356.44	1731763.20	14559215.66	40°05'19.4685"N	80°40'24.2359"W	4357.49	271.259	0.63	-0.41	-0.48
9441.00	91.080	334.070	6043.44	2064.40	177.32	-4396.66	1731722.99	14559297.24	40°05'20.2765"N	80°40'24.7496"W	4400.23	272.310	0.74	0.31	0.67
9532.00	90.340	334.500	6042.32	2155.39	259.30	-4436.14	1731683.53	14559379.19	40°05'21.0881"N	80°40'25.2537"W	4443.71	273.345	0.94	-0.81	0.47
9622.00	90.800	338.110	6041.42	2245.32	341.70	-4472.30	1731647.38	14559461.55	40°05'21.9036"N	80°40'25.7150"W	4485.34	274.369	4.04	0.51	4.01
9713.00	90.310	333.600	6040.54	2336.26	424.71	-4509.51	1731610.18	14559544.53	40°05'22.7253"N	80°40'26.1899"W	4529.47	275.380	4.98	-0.54	-4.96
9805.00	90.650	333.840	6039.77	2428.25	507.20	-4550.25	1731569.47	14559626.99	40°05'23.5419"N	80°40'26.7101"W	4578.43	276.360	0.45	0.37	0.26
9895.00	90.550	333.400	6038.82	2518.23	587.82	-4590.23	1731529.49	14559707.58	40°05'24.3401"N	80°40'27.2208"W	4627.72	277.298	0.50	-0.11	-0.49
9987.00	90.860	334.770	6037.69	2610.22	670.56	-4630.44	1731489.31	14559790.29	40°05'25.1592"N	80°40'27.7342"W	4678.74	278.240	1.53	0.34	1.49
10079.00	90.590	334.300	6036.53	2702.22	753.62	-4669.99	1731449.77	14559873.31	40°05'25.9814"N	80°40'28.2392"W	4730.41	279.167	0.59	-0.29	-0.51
10171.00	90.460	334.660	6035.69	2794.21	836.64	-4709.62	1731410.15	14559956.30	40°05'26.8033"N	80°40'28.7452"W	4783.36	280.073	0.42	-0.14	0.39
10263.00	90.400	334.300	6034.99	2886.21	919.66	-4749.26	1731370.53	14560039.29	40°05'27.6251"N	80°40'29.2513"W	4837.48	280.959	0.40	-0.07	-0.39

09/15/2023



Actual Wellpath Report

Shannon Fields OHI 1H AWP Proj: 25108'
Page n of nn



REFERENCE WELLPATH IDENTIFICATION			
Operator	SWN PRODUCTION COMPANY, LLC	Well	Shannon Fields OHI 1H
Field	Ohio	API	47-069-00344-0000
Facility	Shannon Fields OHI Pad	Wellbore	Shannon Fields OHI 1H AWB
Slot	1H		

WELLPATH DATA (276 stations)

MD [ft]	Inclination [°]	Azimuth [°]	TVD [ft]	Vert Sect [ft]	North [ft]	East [ft]	Grid East [US ft]	Grid North [US ft]	Latitude	Longitude	Closure Dist [ft]	Closure Dir [°]	DLS [°/100ft]	Build Rate [°/100ft]	Turn Rate [°/100ft]
10354.00	90.340	334.220	6034.41	2977.21	1001.63	-4788.78	1731331.03	14560121.22	40°05'28.4366"N	80°40'29.7559"W	4892.41	281.814	0.11	-0.07	-0.09
10445.00	90.460	334.350	6033.77	3068.20	1083.61	-4828.26	1731291.56	14560203.18	40°05'29.2482"N	80°40'30.2601"W	4948.37	282.649	0.19	0.13	0.14
10536.00	90.460	334.140	6033.04	3159.20	1165.57	-4867.80	1731252.03	14560285.10	40°05'30.0595"N	80°40'30.7650"W	5005.40	283.466	0.23	0.00	-0.23
10626.00	90.340	334.200	6032.41	3249.20	1246.58	-4907.01	1731212.84	14560366.08	40°05'30.8614"N	80°40'31.2657"W	5062.88	284.254	0.15	-0.13	0.07
10717.00	90.460	334.480	6031.78	3340.20	1328.60	-4946.42	1731173.45	14560448.07	40°05'31.6734"N	80°40'31.7689"W	5121.74	285.035	0.33	0.13	0.31
10807.00	90.370	333.810	6031.13	3430.19	1409.59	-4985.67	1731134.22	14560529.03	40°05'32.4752"N	80°40'32.2701"W	5181.10	285.787	0.75	-0.10	-0.74
10897.00	90.520	335.030	6030.43	3520.19	1490.76	-5024.52	1731095.37	14560610.17	40°05'33.2788"N	80°40'32.7662"W	5241.01	286.525	1.37	0.17	1.36
10988.00	90.770	335.560	6029.40	3611.17	1573.43	-5062.55	1731057.36	14560692.80	40°05'34.0970"N	80°40'33.2517"W	5301.43	287.265	0.64	0.27	0.58
11080.00	89.820	334.060	6028.93	3703.16	1656.67	-5101.71	1731018.22	14560776.02	40°05'34.9211"N	80°40'33.7516"W	5363.95	287.990	1.93	-1.03	-1.63
11171.00	92.220	334.850	6027.31	3794.14	1738.76	-5140.94	1730979.00	14560858.07	40°05'35.7337"N	80°40'34.2526"W	5427.02	288.686	2.78	2.64	0.87
11262.00	90.220	334.310	6025.37	3885.11	1820.93	-5179.99	1730939.97	14560940.20	40°05'36.5471"N	80°40'34.7512"W	5490.73	289.368	2.28	-2.20	-0.59
11352.00	90.580	334.310	6024.74	3975.11	1902.03	-5219.01	1730900.97	14561021.27	40°05'37.3499"N	80°40'35.2494"W	5554.79	290.024	0.40	0.40	0.00
11444.00	90.460	334.370	6023.91	4067.11	1984.95	-5258.84	1730861.15	14561104.16	40°05'38.1708"N	80°40'35.7581"W	5620.98	290.679	0.15	-0.13	0.07
11536.00	90.990	334.220	6022.74	4159.10	2067.84	-5298.74	1730821.26	14561187.02	40°05'38.9914"N	80°40'36.2676"W	5687.94	291.318	0.60	0.58	-0.16
11627.00	91.630	335.730	6020.66	4250.07	2150.27	-5337.23	1730782.79	14561269.42	40°05'39.8073"N	80°40'36.7590"W	5754.10	291.944	1.80	0.70	1.66
11727.00	90.220	334.250	6019.05	4350.04	2240.88	-5379.50	1730740.54	14561359.99	40°05'40.7042"N	80°40'37.2986"W	5827.57	292.615	2.04	-1.41	-1.48
11823.00	90.400	334.600	6018.53	4446.04	2327.47	-5420.94	1730699.11	14561446.55	40°05'41.5615"N	80°40'37.8278"W	5899.47	293.236	0.41	0.19	0.36
11920.00	90.280	334.630	6017.95	4543.04	2415.10	-5462.52	1730657.55	14561534.15	40°05'42.4289"N	80°40'38.3588"W	5972.59	293.851	0.13	-0.12	0.03
12016.00	90.340	334.290	6017.43	4639.04	2501.72	-5503.91	1730616.17	14561620.73	40°05'43.2864"N	80°40'38.8873"W	6045.79	294.443	0.36	0.06	-0.35
12113.00	89.720	334.450	6017.38	4736.03	2589.18	-5545.87	1730574.23	14561708.15	40°05'44.1521"N	80°40'39.4231"W	6120.50	295.026	0.66	-0.64	0.16
12209.00	90.180	334.770	6017.47	4832.03	2675.90	-5587.03	1730533.09	14561794.85	40°05'45.0107"N	80°40'39.9488"W	6194.79	295.592	0.58	0.48	0.33
12306.00	90.150	334.870	6017.19	4929.03	2763.69	-5628.30	1730491.83	14561882.59	40°05'45.8796"N	80°40'40.4757"W	6270.23	296.153	0.11	-0.03	0.10
12403.00	90.590	334.270	6016.56	5026.03	2851.29	-5669.95	1730450.20	14561970.16	40°05'46.7468"N	80°40'41.0076"W	6346.51	296.697	0.77	0.45	-0.62
12499.00	90.250	334.430	6015.86	5122.02	2937.82	-5711.51	1730408.66	14562056.66	40°05'47.6034"N	80°40'41.5383"W	6422.78	297.220	0.39	-0.35	0.17
12596.00	90.370	334.980	6015.33	5219.02	3025.52	-5752.95	1730367.23	14562144.33	40°05'48.4715"N	80°40'42.0675"W	6500.02	297.740	0.58	0.12	0.57
12692.00	90.650	334.670	6014.48	5315.01	3112.40	-5793.79	1730326.41	14562231.17	40°05'49.3315"N	80°40'42.5889"W	6576.85	298.245	0.44	0.29	-0.32
12789.00	90.620	334.870	6013.40	5412.00	3200.14	-5835.13	1730285.08	14562318.88	40°05'50.2001"N	80°40'43.1168"W	6655.05	298.742	0.21	-0.03	0.21
12885.00	90.120	334.770	6012.78	5508.00	3287.02	-5875.97	1730244.26	14562405.72	40°05'51.0600"N	80°40'43.6384"W	6732.87	299.223	0.53	-0.52	-0.10
12982.00	90.490	334.930	6012.27	5604.99	3374.82	-5917.20	1730203.05	14562493.49	40°05'51.9292"N	80°40'44.1648"W	6811.95	299.698	0.42	0.38	0.16
13078.00	89.850	333.930	6011.98	5700.99	3461.41	-5958.63	1730161.63	14562580.05	40°05'52.7864"N	80°40'44.6939"W	6891.06	300.153	1.24	-0.67	-1.04

09/15/2023



Actual Wellpath Report

Shannon Fields OHI 1H AWP Proj: 25108'
Page n of nn



REFERENCE WELLPATH IDENTIFICATION			
Operator	SWN PRODUCTION COMPANY, LLC	Well	Shannon Fields OHI 1H
Field	Ohio	API	47-069-00344-0000
Facility	Shannon Fields OHI Pad	Wellbore	Shannon Fields OHI 1H AWB
Slot	1H		

WELLPATH DATA (276 stations)															
------------------------------	--	--	--	--	--	--	--	--	--	--	--	--	--	--	--

MD [ft]	Inclination [°]	Azimuth [°]	TVD [ft]	Vert Sect [ft]	North [ft]	East [ft]	Grid East [US ft]	Grid North [US ft]	Latitude	Longitude	Closure Dist [ft]	Closure Dir [°]	DLS ["/100ft]	Build Rate ["/100ft]	Turn Rate ["/100ft]
13175.00	89.880	334.310	6012.21	5797.99	3548.69	-6000.97	1730119.31	14562667.29	40°05'53.6504"N	80°40'45.2347"W	6971.72	300.598	0.39	0.03	0.39
13272.00	90.150	333.850	6012.19	5894.99	3635.93	-6043.37	1730076.93	14562754.49	40°05'54.5140"N	80°40'45.7762"W	7052.82	301.033	0.55	0.28	-0.47
13368.00	92.030	335.330	6010.36	5990.96	3722.62	-6084.55	1730035.76	14562841.15	40°05'55.3722"N	80°40'46.3022"W	7133.00	301.459	2.49	1.96	1.54
13464.00	90.090	334.590	6008.58	6086.93	3809.58	-6125.18	1729995.15	14562928.07	40°05'56.2329"N	80°40'46.8209"W	7213.23	301.880	2.16	-2.02	-0.77
13560.00	90.060	335.110	6008.46	6182.93	3896.47	-6165.98	1729954.37	14563014.94	40°05'57.0931"N	80°40'47.3419"W	7293.95	302.290	0.54	-0.03	0.54
13657.00	89.910	334.000	6008.48	6279.93	3984.06	-6207.65	1729912.71	14563102.49	40°05'57.9602"N	80°40'47.8741"W	7376.16	302.692	1.15	-0.15	-1.14
13753.00	90.090	334.170	6008.48	6375.93	4070.41	-6249.61	1729870.77	14563188.81	40°05'58.8149"N	80°40'48.4100"W	7458.27	303.076	0.26	0.19	0.18
13850.00	90.310	333.450	6008.14	6472.92	4157.45	-6292.42	1729827.98	14563275.81	40°05'59.6766"N	80°40'48.9568"W	7541.81	303.453	0.78	0.23	-0.74
13946.00	89.880	333.560	6007.99	6568.91	4243.37	-6335.24	1729785.17	14563361.70	40°06'0.5272"N	80°40'49.5040"W	7625.06	303.814	0.46	-0.45	0.11
14043.00	90.370	333.650	6007.77	6665.90	4330.25	-6378.37	1729742.06	14563448.55	40°06'1.3873"N	80°40'50.0549"W	7709.39	304.172	0.51	0.51	0.09
14139.00	90.120	333.860	6007.36	6761.90	4416.36	-6420.82	1729699.63	14563534.62	40°06'2.2397"N	80°40'50.5972"W	7793.02	304.521	0.34	-0.26	0.22
14236.00	90.180	333.540	6007.11	6858.89	4503.32	-6463.79	1729656.67	14563621.54	40°06'3.1006"N	80°40'51.1462"W	7877.85	304.865	0.34	0.06	-0.33
14332.00	90.280	334.300	6006.72	6954.89	4589.54	-6506.00	1729614.48	14563707.73	40°06'3.9541"N	80°40'51.6854"W	7961.90	305.200	0.80	0.10	0.79
14429.00	90.590	333.710	6005.99	7051.88	4676.72	-6548.51	1729571.98	14563794.88	40°06'4.8172"N	80°40'52.2284"W	8047.03	305.533	0.69	0.32	-0.61
14525.00	90.460	333.050	6005.11	7147.86	4762.54	-6591.52	1729528.99	14563880.67	40°06'5.6668"N	80°40'52.7780"W	8132.04	305.849	0.70	-0.14	-0.69
14621.00	90.580	334.020	6004.24	7243.85	4848.48	-6634.30	1729486.22	14563966.57	40°06'6.5175"N	80°40'53.3245"W	8217.16	306.160	1.02	0.13	1.01
14718.00	90.620	334.050	6003.22	7340.84	4935.68	-6676.77	1729443.77	14564053.74	40°06'7.3808"N	80°40'53.8670"W	8303.03	306.473	0.05	0.04	0.03
14815.00	90.400	334.750	6002.36	7437.84	5023.16	-6718.68	1729401.88	14564141.18	40°06'8.2467"N	80°40'54.4023"W	8388.85	306.783	0.76	-0.23	0.72
14911.00	89.780	333.880	6002.21	7533.84	5109.67	-6760.29	1729360.29	14564227.66	40°06'9.1031"N	80°40'54.9338"W	8474.09	307.083	1.11	-0.65	-0.91
15007.00	91.290	333.040	6001.31	7629.82	5195.55	-6803.18	1729317.41	14564313.50	40°06'9.9533"N	80°40'55.4818"W	8560.20	307.369	1.80	1.57	-0.87
15104.00	90.860	334.060	5999.49	7726.79	5282.38	-6846.38	1729274.23	14564400.30	40°06'10.8128"N	80°40'56.0337"W	8647.33	307.652	1.14	-0.44	1.05
15200.00	90.460	334.400	5998.38	7822.78	5368.82	-6888.11	1729232.52	14564486.71	40°06'11.6686"N	80°40'56.5668"W	8733.29	307.934	0.55	-0.42	0.35
15296.00	90.550	334.330	5997.54	7918.78	5455.37	-6929.64	1729191.00	14564573.22	40°06'12.5253"N	80°40'57.0973"W	8819.35	308.212	0.12	0.09	-0.07
15393.00	90.220	333.420	5996.89	8015.77	5542.46	-6972.35	1729148.31	14564660.28	40°06'13.3874"N	80°40'57.6429"W	8906.88	308.482	1.00	-0.34	-0.94
15489.00	90.180	332.760	5996.55	8111.75	5628.06	-7015.80	1729104.88	14564745.85	40°06'14.2349"N	80°40'58.1981"W	8994.25	308.737	0.69	-0.04	-0.69
15586.00	90.400	333.670	5996.06	8208.73	5714.65	-7059.51	1729061.18	14564832.40	40°06'15.0921"N	80°40'58.7567"W	9082.62	308.990	0.97	0.23	0.94
15683.00	90.180	333.780	5995.57	8305.72	5801.63	-7102.45	1729018.26	14564919.35	40°06'15.9532"N	80°40'59.3053"W	9170.81	309.244	0.25	-0.23	0.11
15779.00	90.030	332.780	5995.39	8401.70	5887.38	-7145.62	1728975.11	14565005.06	40°06'16.8021"N	80°40'59.8569"W	9258.56	309.486	1.05	-0.16	-1.04
15874.00	90.280	333.560	5995.14	8496.68	5972.15	-7188.49	1728932.25	14565089.80	40°06'17.6413"N	80°41'0.4048"W	9345.64	309.720	0.86	0.26	0.82
15971.00	90.090	333.680	5994.82	8593.68	6059.05	-7231.59	1728889.17	14565176.66	40°06'18.5015"N	80°41'0.9554"W	9434.40	309.958	0.23	-0.20	0.12

09/15/2023



Actual Wellpath Report

Shannon Fields OHI 1H AWP Proj: 25108'
Page n of nn



REFERENCE WELLPATH IDENTIFICATION			
Operator	SWN PRODUCTION COMPANY, LLC	Well	Shannon Fields OHI 1H
Field	Ohio	API	47-069-00344-0000
Facility	Shannon Fields OHI Pad	Wellbore	Shannon Fields OHI 1H AWB
Slot	1H		

WELLPATH DATA (276 stations)															
MD [ft]	Inclination [°]	Azimuth [°]	TVD [ft]	Vert Sect [ft]	North [ft]	East [ft]	Grid East [US ft]	Grid North [US ft]	Latitude	Longitude	Closure Dist [ft]	Closure Dir [°]	DLS [°/100ft]	Build Rate [°/100ft]	Turn Rate [°/100ft]
16067.00	89.820	333.040	5994.90	8689.66	6144.85	-7274.64	1728846.14	14565262.44	40°06'19.3510"N	80°41'1.5055"W	9522.58	310.188	0.72	-0.28	-0.67
16164.00	89.850	333.300	5995.18	8786.64	6231.41	-7318.42	1728802.38	14565348.96	40°06'20.2079"N	80°41'2.0649"W	9611.96	310.413	0.27	0.03	0.27
16261.00	90.250	333.550	5995.09	8883.63	6318.16	-7361.81	1728759.00	14565435.68	40°06'21.0667"N	80°41'2.6194"W	9701.31	310.637	0.49	0.41	0.26
16357.00	90.060	332.950	5994.83	8979.61	6403.89	-7405.02	1728715.81	14565521.37	40°06'21.9154"N	80°41'3.1716"W	9790.00	310.853	0.66	-0.20	-0.63
16454.00	91.200	333.200	5993.77	9076.58	6490.37	-7448.94	1728671.90	14565607.82	40°06'22.7715"N	80°41'3.7329"W	9879.86	311.066	1.20	1.18	0.26
16550.00	90.250	333.030	5992.55	9172.57	6576.72	-7490.85	1728630.02	14565694.14	40°06'23.6264"N	80°41'4.2682"W	9968.25	311.282	2.15	-0.99	1.91
16647.00	89.910	331.890	5992.42	9269.54	6663.49	-7534.18	1728586.70	14565780.87	40°06'24.4853"N	80°41'4.8220"W	10058.13	311.491	3.26	-0.35	-3.24
16743.00	91.790	333.910	5990.99	9365.49	6748.93	-7577.91	1728542.99	14565866.28	40°06'25.3312"N	80°41'5.3808"W	10147.55	311.688	2.87	1.96	2.10
16840.00	89.320	334.320	5990.05	9462.48	6836.19	-7620.25	1728500.67	14565953.50	40°06'26.1950"N	80°41'5.9218"W	10237.27	311.896	2.58	-2.55	0.42
16936.00	89.690	333.190	5990.88	9558.47	6922.29	-7662.70	1728458.23	14566039.57	40°06'27.0473"N	80°41'6.4642"W	10326.42	312.094	1.24	0.39	-1.18
17032.00	90.090	333.720	5991.07	9654.46	7008.17	-7705.60	1728415.35	14566125.42	40°06'27.8975"N	80°41'7.0124"W	10415.89	312.286	0.69	0.42	0.55
17129.00	90.060	334.330	5990.94	9751.46	7095.37	-7748.08	1728372.88	14566212.58	40°06'28.7607"N	80°41'7.5552"W	10506.05	312.482	0.63	-0.03	0.63
17225.00	90.030	335.400	5990.86	9847.45	7182.28	-7788.86	1728332.12	14566299.46	40°06'29.6210"N	80°41'8.0760"W	10594.88	312.680	1.12	-0.03	1.11
17321.00	90.280	334.690	5990.61	9943.44	7269.32	-7829.36	1728291.63	14566386.46	40°06'30.4825"N	80°41'8.5933"W	10683.72	312.876	0.78	0.26	-0.74
17418.00	90.030	333.620	5990.34	10040.44	7356.61	-7871.65	1728249.37	14566473.72	40°06'31.3466"N	80°41'9.1335"W	10774.16	313.063	1.13	-0.26	-1.10
17514.00	90.180	334.400	5990.17	10136.44	7442.90	-7913.71	1728207.31	14566559.98	40°06'32.2008"N	80°41'9.6710"W	10863.87	313.244	0.83	0.16	0.81
17611.00	91.080	334.980	5989.10	10233.43	7530.58	-7955.18	1728165.86	14566647.63	40°06'33.0688"N	80°41'10.2007"W	10954.20	313.429	1.10	0.93	0.60
17707.00	90.680	334.560	5987.63	10329.41	7617.42	-7996.10	1728124.96	14566734.42	40°06'33.9283"N	80°41'10.7234"W	11043.67	313.611	0.60	-0.42	-0.44
17804.00	90.280	334.920	5986.81	10426.41	7705.14	-8037.49	1728083.59	14566822.11	40°06'34.7966"N	80°41'11.2521"W	11134.20	313.791	0.55	-0.41	0.37
17901.00	90.090	334.980	5986.50	10523.40	7793.01	-8078.56	1728042.54	14566909.95	40°06'35.6664"N	80°41'11.7767"W	11224.71	313.969	0.21	-0.20	0.06
17997.00	90.460	332.280	5986.04	10619.38	7879.01	-8121.19	1727999.92	14566995.92	40°06'36.5178"N	80°41'12.3215"W	11315.15	314.133	2.84	0.39	-2.81
18094.00	89.420	334.940	5986.14	10716.37	7965.90	-8164.30	1727956.82	14567082.77	40°06'37.3778"N	80°41'12.8724"W	11406.64	314.295	2.94	-1.07	2.74
18190.00	89.750	333.630	5986.84	10812.36	8052.38	-8205.95	1727915.19	14567169.22	40°06'38.2340"N	80°41'13.4046"W	11496.89	314.459	1.41	0.34	-1.36
18286.00	89.780	334.570	5987.23	10908.36	8138.74	-8247.89	1727873.27	14567255.54	40°06'39.0888"N	80°41'13.9404"W	11587.35	314.618	0.98	0.03	0.98
18382.00	89.940	334.830	5987.46	11004.36	8225.53	-8288.91	1727832.26	14567342.30	40°06'39.9479"N	80°41'14.4644"W	11677.56	314.780	0.32	0.17	0.27
18479.00	90.060	335.940	5987.46	11101.34	8313.72	-8329.31	1727791.88	14567430.45	40°06'40.8208"N	80°41'14.9804"W	11768.41	314.946	1.15	0.12	1.14
18576.00	89.910	334.280	5987.49	11198.33	8401.70	-8370.14	1727751.07	14567518.40	40°06'41.6917"N	80°41'15.5019"W	11859.50	315.108	1.72	-0.15	-1.71
18672.00	90.400	334.340	5987.23	11294.32	8488.21	-8411.75	1727709.47	14567604.88	40°06'42.5480"N	80°41'16.0336"W	11950.20	315.259	0.51	0.51	0.06
18768.00	90.520	334.620	5986.46	11390.32	8574.84	-8453.11	1727668.13	14567691.48	40°06'43.4055"N	80°41'16.5620"W	12040.89	315.410	0.32	0.12	0.29
18865.00	90.770	334.970	5985.37	11487.31	8662.60	-8494.42	1727626.84	14567779.20	40°06'44.2742"N	80°41'17.0897"W	12132.43	315.562	0.44	0.26	0.36

09/15/2023



Actual Wellpath Report

Shannon Fields OHI 1H AWP Proj: 25108'
Page n of nn



REFERENCE WELLPATH IDENTIFICATION			
Operator	SWN PRODUCTION COMPANY, LLC	Well	Shannon Fields OHI 1H
Field	Ohio	API	47-069-00344-0000
Facility	Shannon Fields OHI Pad	Wellbore	Shannon Fields OHI 1H AWB
Slot	1H		

WELLPATH DATA (276 stations)

MD [ft]	Inclination [°]	Azimuth [°]	TVD [ft]	Vert Sect [ft]	North [ft]	East [ft]	Grid East [US ft]	Grid North [US ft]	Latitude	Longitude	Closure Dist [ft]	Closure Dir [°]	DLS [°/100ft]	Build Rate [°/100ft]	Turn Rate [°/100ft]
18961.00	90.400	334.860	5984.39	11583.30	8749.54	-8535.12	1727586.16	14567866.11	40°06'45.1348"N	80°41'17.6095"W	12223.04	315.711	0.40	-0.35	-0.11
19058.00	90.520	334.920	5983.61	11680.29	8837.37	-8576.28	1727545.01	14567953.90	40°06'46.0042"N	80°41'18.1354"W	12314.69	315.859	0.14	0.12	0.06
19154.00	89.970	334.150	5983.20	11776.29	8924.05	-8617.55	1727503.75	14568040.54	40°06'46.8621"N	80°41'18.6627"W	12405.68	316.001	0.99	-0.57	-0.80
19250.00	90.990	334.300	5982.39	11872.29	9010.49	-8659.29	1727462.03	14568126.95	40°06'47.7178"N	80°41'19.1961"W	12496.89	316.139	1.07	1.06	0.16
19347.00	90.620	333.940	5981.03	11969.28	9097.75	-8701.63	1727419.71	14568214.18	40°06'48.5816"N	80°41'19.7370"W	12589.18	316.275	0.53	-0.35	-0.37
19443.00	90.680	334.250	5979.94	12065.27	9184.10	-8743.57	1727377.79	14568300.50	40°06'49.4363"N	80°41'20.2729"W	12680.60	316.408	0.33	0.06	0.32
19540.00	91.200	334.310	5978.35	12162.26	9271.48	-8785.66	1727335.71	14568387.84	40°06'50.3013"N	80°41'20.8107"W	12772.94	316.541	0.54	0.54	0.06
19636.00	91.080	334.690	5976.44	12258.24	9358.11	-8826.98	1727294.41	14568474.44	40°06'51.1588"N	80°41'21.3387"W	12864.28	316.673	0.42	-0.13	0.40
19733.00	91.080	335.580	5974.61	12355.21	9446.10	-8867.76	1727253.64	14568562.39	40°06'52.0297"N	80°41'21.8596"W	12956.31	316.809	0.92	0.00	0.92
19829.00	91.140	335.280	5972.75	12451.17	9533.39	-8907.67	1727213.75	14568649.65	40°06'52.8937"N	80°41'22.3693"W	13047.30	316.943	0.32	0.06	-0.31
19925.00	90.460	334.280	5971.41	12547.16	9620.23	-8948.57	1727172.87	14568736.46	40°06'53.7533"N	80°41'22.8919"W	13138.71	317.072	1.26	-0.71	-1.04
20022.00	90.520	334.500	5970.58	12644.15	9707.70	-8990.49	1727130.96	14568823.89	40°06'54.6191"N	80°41'23.4276"W	13231.34	317.197	0.24	0.06	0.23
20118.00	90.800	334.960	5969.48	12740.15	9794.51	-9031.47	1727089.99	14568910.66	40°06'55.4783"N	80°41'23.9511"W	13322.91	317.321	0.56	0.29	0.48
20214.00	90.770	334.110	5968.16	12836.13	9881.17	-9072.74	1727048.74	14568997.29	40°06'56.3362"N	80°41'24.4785"W	13414.63	317.442	0.89	-0.03	-0.89
20311.00	90.710	334.140	5966.91	12933.13	9968.44	-9115.07	1727006.43	14569084.53	40°06'57.2000"N	80°41'25.0194"W	13507.56	317.560	0.07	-0.06	0.03
20408.00	90.220	334.460	5966.12	13030.12	10055.84	-9157.13	1726964.38	14569171.89	40°06'58.0652"N	80°41'25.5569"W	13600.48	317.678	0.60	-0.51	0.33
20504.00	90.680	334.170	5965.37	13126.12	10142.35	-9198.74	1726922.79	14569258.37	40°06'58.9215"N	80°41'26.0885"W	13692.49	317.793	0.57	0.48	-0.30
20601.00	90.400	333.760	5964.45	13223.11	10229.50	-9241.32	1726880.23	14569345.49	40°06'59.7842"N	80°41'26.6326"W	13785.67	317.905	0.51	-0.29	-0.42
20697.00	90.770	334.860	5963.47	13319.11	10316.01	-9282.93	1726838.64	14569431.96	40°07'0.6405"N	80°41'27.1644"W	13877.78	318.017	1.21	0.39	1.15
20794.00	90.860	334.660	5962.09	13416.09	10403.74	-9324.29	1726797.29	14569519.66	40°07'1.5089"N	80°41'27.6928"W	13970.69	318.132	0.23	0.09	-0.21
20891.00	90.680	334.850	5960.79	13513.08	10491.47	-9365.65	1726755.94	14569607.35	40°07'2.3773"N	80°41'28.2213"W	14063.65	318.245	0.27	-0.19	0.20
20987.00	90.710	334.350	5959.63	13609.07	10578.18	-9406.83	1726714.79	14569694.03	40°07'3.2356"N	80°41'28.7474"W	14155.79	318.354	0.52	0.03	-0.52
21084.00	91.020	334.870	5958.16	13706.06	10665.80	-9448.41	1726673.22	14569781.62	40°07'4.1029"N	80°41'29.2788"W	14248.92	318.464	0.62	0.32	0.54
21180.00	91.350	334.390	5956.18	13802.04	10752.52	-9489.54	1726632.11	14569868.30	40°07'4.9613"N	80°41'29.8042"W	14341.13	318.570	0.61	0.34	-0.50
21277.00	91.690	334.670	5953.60	13899.00	10840.07	-9531.24	1726590.43	14569955.81	40°07'5.8278"N	80°41'30.3371"W	14434.38	318.676	0.45	0.35	0.29
21374.00	90.800	334.460	5951.50	13995.98	10927.64	-9572.89	1726548.79	14570043.35	40°07'6.6947"N	80°41'30.8693"W	14527.68	318.781	0.94	-0.92	-0.22
21470.00	90.400	334.340	5950.49	14091.97	11014.21	-9614.36	1726507.33	14570129.89	40°07'7.5516"N	80°41'31.3993"W	14620.15	318.882	0.44	-0.42	-0.12
21567.00	90.460	334.250	5949.76	14188.97	11101.61	-9656.43	1726465.28	14570217.25	40°07'8.4167"N	80°41'31.9370"W	14713.68	318.983	0.11	0.06	-0.09
21664.00	90.620	334.270	5948.85	14285.97	11188.98	-9698.56	1726423.17	14570304.59	40°07'9.2816"N	80°41'32.4753"W	14807.27	319.081	0.17	0.16	0.02
21760.00	90.740	334.610	5947.71	14381.96	11275.58	-9739.98	1726381.77	14570391.16	40°07'10.1388"N	80°41'33.0045"W	14899.86	319.179	0.38	0.12	0.35

09/15/2023



Actual Wellpath Report

Shannon Fields OHI 1H AWP Proj: 25108'
Page n of nn



REFERENCE WELLPATH IDENTIFICATION			
Operator	SWN PRODUCTION COMPANY, LLC	Well	Shannon Fields OHI 1H
Field	Ohio	API	47-069-00344-0000
Facility	Shannon Fields OHI Pad	Wellbore	Shannon Fields OHI 1H AWB
Slot	1H		

WELLPATH DATA (276 stations)

MD [ft]	Inclination [°]	Azimuth [°]	TVD [ft]	Vert Sect [ft]	North [ft]	East [ft]	Grid East [US ft]	Grid North [US ft]	Latitude	Longitude	Closure Dist [ft]	Closure Dir [°]	DLS ["/100ft]	Build Rate ["/100ft]	Turn Rate ["/100ft]
21857.00	90.430	334.310	5946.72	14478.95	11363.10	-9781.79	1726339.97	14570478.64	40°07'11.0050"N	80°41'33.5389"W	14993.45	319.277	0.44	-0.32	-0.31
21953.00	90.830	334.910	5945.66	14574.95	11449.82	-9822.95	1726298.82	14570565.33	40°07'11.8634"N	80°41'34.0649"W	15086.05	319.373	0.75	0.42	0.63
22050.00	90.650	334.580	5944.41	14671.93	11537.54	-9864.33	1726257.46	14570653.01	40°07'12.7317"N	80°41'34.5937"W	15179.59	319.470	0.39	-0.19	-0.34
22146.00	90.520	334.270	5943.43	14767.93	11624.13	-9905.78	1726216.03	14570739.57	40°07'13.5888"N	80°41'35.1232"W	15272.35	319.563	0.35	-0.14	-0.32
22243.00	90.460	334.910	5942.60	14864.92	11711.74	-9947.40	1726174.43	14570827.15	40°07'14.4566"N	80°41'35.6551"W	15366.05	319.657	0.66	-0.06	0.66
22339.00	90.990	334.900	5941.39	14960.91	11798.67	-9988.11	1726133.73	14570914.04	40°07'15.3165"N	80°41'36.1753"W	15458.69	319.751	0.55	0.55	-0.01
22436.00	91.020	334.470	5939.68	15057.89	11886.34	-10029.58	1726092.28	14571001.68	40°07'16.1842"N	80°41'36.7052"W	15552.42	319.843	0.44	0.03	-0.44
22532.00	90.430	334.720	5938.47	15153.89	11973.05	-10070.76	1726051.11	14571088.36	40°07'17.0425"N	80°41'37.2315"W	15645.26	319.932	0.67	-0.61	0.26
22628.00	90.430	335.180	5937.75	15249.88	12060.02	-10111.41	1726010.48	14571175.29	40°07'17.9033"N	80°41'37.7508"W	15738.00	320.023	0.48	0.00	0.48
22725.00	90.590	334.320	5936.89	15346.87	12147.75	-10152.78	1725969.12	14571262.98	40°07'18.7717"N	80°41'38.2796"W	15831.83	320.112	0.90	0.16	-0.89
22821.00	90.770	334.550	5935.75	15442.86	12234.34	-10194.21	1725927.72	14571349.54	40°07'19.6288"N	80°41'38.8090"W	15924.85	320.197	0.30	0.19	0.24
22918.00	90.620	335.380	5934.57	15539.85	12322.22	-10235.25	1725886.69	14571437.39	40°07'20.4986"N	80°41'39.3334"W	16018.66	320.286	0.87	-0.15	0.86
23014.00	90.650	334.690	5933.51	15635.83	12409.25	-10275.76	1725846.19	14571524.38	40°07'21.3600"N	80°41'39.8511"W	16111.51	320.373	0.72	0.03	-0.72
23111.00	90.460	334.570	5932.57	15732.83	12496.89	-10317.32	1725804.65	14571611.99	40°07'22.2275"N	80°41'40.3822"W	16205.54	320.457	0.23	-0.20	-0.12
23207.00	90.620	334.770	5931.66	15828.82	12583.66	-10358.39	1725763.59	14571698.72	40°07'23.0863"N	80°41'40.9070"W	16298.61	320.540	0.27	0.17	0.21
23304.00	90.680	334.630	5930.56	15925.81	12671.35	-10399.84	1725722.16	14571786.38	40°07'23.9543"N	80°41'41.4368"W	16392.67	320.623	0.16	0.06	-0.14
23400.00	90.830	335.260	5929.30	16021.80	12758.30	-10440.50	1725681.52	14571873.30	40°07'24.8150"N	80°41'41.9562"W	16485.70	320.706	0.67	0.16	0.66
23497.00	91.080	334.640	5927.68	16118.78	12846.17	-10481.56	1725640.47	14571961.13	40°07'25.6846"N	80°41'42.4810"W	16579.72	320.788	0.69	0.26	-0.64
23594.00	90.980	334.820	5925.94	16215.76	12933.87	-10522.96	1725599.09	14572048.80	40°07'26.5527"N	80°41'43.0100"W	16673.86	320.868	0.21	-0.10	0.19
23690.00	90.740	334.710	5924.49	16311.75	13020.70	-10563.88	1725558.18	14572135.59	40°07'27.4122"N	80°41'43.5330"W	16767.06	320.947	0.28	-0.25	-0.11
23787.00	90.710	334.030	5923.27	16408.74	13108.15	-10605.84	1725516.24	14572223.01	40°07'28.2778"N	80°41'44.0692"W	16861.42	321.024	0.70	-0.03	-0.70
23883.00	90.950	334.620	5921.88	16504.73	13194.66	-10647.43	1725474.67	14572309.48	40°07'29.1341"N	80°41'44.6008"W	16954.85	321.098	0.66	0.25	0.61
23980.00	90.950	334.360	5920.27	16601.72	13282.19	-10689.20	1725432.92	14572396.98	40°07'30.0005"N	80°41'45.1346"W	17049.21	321.174	0.27	0.00	-0.27
24076.00	90.860	334.490	5918.75	16697.70	13368.78	-10730.63	1725391.50	14572483.53	40°07'30.8575"N	80°41'45.6642"W	17142.66	321.247	0.16	-0.09	0.14
24173.00	90.920	334.260	5917.25	16794.69	13456.22	-10772.58	1725349.57	14572570.95	40°07'31.7231"N	80°41'46.2004"W	17237.12	321.320	0.25	0.06	-0.24
24270.00	90.620	334.800	5915.94	16891.68	13543.79	-10814.29	1725307.87	14572658.48	40°07'32.5898"N	80°41'46.7335"W	17331.56	321.394	0.64	-0.31	0.56
24367.00	90.620	334.660	5914.89	16988.67	13631.50	-10855.70	1725266.49	14572746.15	40°07'33.4580"N	80°41'47.2626"W	17425.96	321.467	0.14	0.00	-0.14
24463.00	90.520	334.610	5913.94	17084.67	13718.24	-10896.82	1725225.38	14572832.86	40°07'34.3166"N	80°41'47.7882"W	17519.44	321.539	0.12	-0.10	-0.05
24560.00	90.430	334.730	5913.13	17181.66	13805.91	-10938.32	1725183.90	14572920.50	40°07'35.1844"N	80°41'48.3186"W	17613.91	321.610	0.15	-0.09	0.12
24656.00	90.400	334.490	5912.44	17277.66	13892.64	-10979.48	1725142.75	14573007.19	40°07'36.0428"N	80°41'48.8446"W	17707.47	321.680	0.25	-0.03	-0.25

09/15/2023



Actual Wellpath Report

Shannon Fields OHI 1H AWP Proj: 25108'
Page n of nn



REFERENCE WELLPATH IDENTIFICATION			
Operator	SWN PRODUCTION COMPANY, LLC	Well	Shannon Fields OHI 1H
Field	Ohio	API	47-069-00344-0000
Facility	Shannon Fields OHI Pad	Wellbore	Shannon Fields OHI 1H AWB
Slot	1H		

WELLPATH DATA (276 stations) † = interpolated, ‡ = extrapolated station															
MD [ft]	Inclination [°]	Azimuth [°]	TVD [ft]	Vert Sect [ft]	North [ft]	East [ft]	Grid East [US ft]	Grid North [US ft]	Latitude	Longitude	Closure Dist [ft]	Closure Dir [°]	DLS [°/100ft]	Build Rate [°/100ft]	Turn Rate [°/100ft]
24753.00	90.520	334.540	5911.66	17374.66	13980.20	-11021.21	1725101.03	14573094.71	40°07'36.9094"N	80°41'49.3781"W	17802.05	321.750	0.13	0.12	0.05
24849.00	90.490	334.790	5910.81	17470.65	14066.96	-11062.29	1725059.97	14573181.44	40°07'37.7682"N	80°41'49.9031"W	17895.63	321.818	0.26	-0.03	0.26
24946.00	90.430	334.400	5910.03	17567.65	14154.58	-11103.90	1725018.37	14573269.03	40°07'38.6355"N	80°41'50.4350"W	17990.24	321.887	0.41	-0.06	-0.40
25042.00	90.430	334.220	5909.31	17663.64	14241.09	-11145.52	1724976.78	14573355.50	40°07'39.4917"N	80°41'50.9669"W	18084.00	321.952	0.19	0.00	-0.19
25083.00	90.620	334.910	5908.94	17704.64	14278.11	-11163.13	1724959.17	14573392.51	40°07'39.8582"N	80°41'51.1920"W	18124.01	321.980	1.75	0.46	1.68
25108.00‡	90.620	334.910	5908.67	17729.64	14300.75	-11173.73	1724948.58	14573415.14	40°07'40.0823"N	80°41'51.3274"W	18148.38	321.998	0.00	0.00	0.00

HOLE & CASING SECTIONS - Ref Wellbore: Shannon Fields OHI 1H AWB Ref Wellpath: Shannon Fields OHI 1H AWP Proj: 25108'									
String/Diameter	Start MD [ft]	End MD [ft]	Interval [ft]	Start TVD [ft]	End TVD [ft]	Start N/S [ft]	Start E/W [ft]	End N/S [ft]	End E/W [ft]
20in Conductor	26.00	136.00	110.00	26.00	136.00	0.00	0.00	0.78	0.08
17.5in Open Hole	136.00	585.00	449.00	136.00	584.98	0.78	0.08	2.02	-1.65
13.375in Casing Surface	26.00	554.00	528.00	26.00	553.99	0.00	0.00	2.00	-0.95
12.25in Open Hole	585.00	1945.00	1360.00	584.98	1888.73	2.02	-1.65	-162.47	-285.36
9.625in Casing Intermediate	26.00	1940.00	1914.00	26.00	1884.21	0.00	0.00	-160.88	-283.93
8.5in Open Hole	1945.00	25108.00	23163.00	1888.73	5908.67	-162.47	-285.36	14300.75	-11173.73
5.5in Casing Production	26.00	25108.00	25082.00	26.00	5908.67	0.00	0.00	14300.75	-11173.73

09/15/2023



Actual Wellpath Report

Shannon Fields OHI 1H AWP Proj: 25108'
Page n of nn



REFERENCE WELLPATH IDENTIFICATION			
Operator	SWN PRODUCTION COMPANY, LLC	Well	Shannon Fields OHI 1H
Field	Ohio	API	47-069-00344-0000
Facility	Shannon Fields OHI Pad	Wellbore	Shannon Fields OHI 1H AWB
Slot	1H		

TARGETS								
Name	TVD [ft]	North [ft]	East [ft]	Grid East [US ft]	Grid North [US ft]	Latitude	Longitude	Shape
Shannon Fields OHI 1H BHL Rev-2	5867.11	17542.95	-12746.00	1723376.92	14576656.07	40°08'12.1743"N	80°42'11.4289"W	point
Shannon Fields OHI 1H BHL Rev 4	5893.00	14294.64	-11187.90	1724934.41	14573409.03	40°07'40.0224"N	80°41'51.5101"W	point
Shannon Fields OHI 1H BHL Rev-3	5898.11	17542.95	-12746.00	1723376.92	14576656.07	40°08'12.1743"N	80°42'11.4289"W	point
Shannon Fields OHI 1H BHL Rev 5	5940.00	14294.64	-11187.90	1724934.41	14573409.03	40°07'40.0224"N	80°41'51.5101"W	point
Shannon Fields OHI 1H LP Rev 3	6027.00	-1309.12	-3686.76	1732432.61	14557811.38	40°05'5.5615"N	80°40'15.6865"W	point
Shannon Fields OHI 1H LP Rev 4	6074.00	-1309.12	-3686.76	1732432.61	14557811.38	40°05'5.5615"N	80°40'15.6865"W	point

WELLPATH COMPOSITION - Ref Wellbore: Shannon Fields OHI 1H AWB Ref Wellpath: Shannon Fields OHI 1H AWP Proj: 25108'					
Start MD [ft]	End MD [ft]	Positional Uncertainty Model	Log Name/Comment	Wellbore	Survey Date
26.00	484.00	BH Generic gyro - continuous (Standard)	01 Tally Gyro <17-1/2"> (50' - 484')	Shannon Fields OHI 1H AWB	11/10/2022
484.00	1865.00	OWSG MWD rev2 + HRGM	02 Tally MWD<12-1/4"> (503'-1865')	Shannon Fields OHI 1H AWB	11/10/2022
1865.00	25108.00	BH AutoTrak Curve/eXpress (2019) (HRGM, Short spacing)	03 BH AT Curve <8-1/2"> (1865') (1996'-25083')	Shannon Fields OHI 1H AWB	11/17/2022

09/15/2023



Actual Wellpath Report
 Shannon Fields OHI 1H AWP Proj: 25108'
 Page n of nn



REFERENCE WELLPATH IDENTIFICATION			
Operator	SWN PRODUCTION COMPANY, LLC	Well	Shannon Fields OHI 1H
Field	Ohio	API	47-069-00344-0000
Facility	Shannon Fields OHI Pad	Wellbore	Shannon Fields OHI 1H AWB
Slot	1H		

COMMENTS
<p>Wellpath general comments API: 47-069-00344-0000 BH Job#: 111469801 Rig: SDC 40 Duration: 11/11/2022-11/17/2022 01_Tally Gyro <17-1/2">(50'-484') 02_Tally MWD <12-1/4">(503'-1865') 03_BH AT Curve <8-1/2">(1865')(1996'-25083')</p>

09/15/2023