

GORDON LEASE 174.37 ACRES ± WELL NO. 1

LONGITUDE 79°30'00"

9,130'

LAT. 38°40'59.9"

WELL NO. 1 STATE PLANE COORDINATES

(N) 616,275
(E) 2,419,665

USA
(SURFACE)

M. BENNETT
375 ACRES ±

RANDOLPH GORDON
RONALD GORDON
DONALD GORDON
144 ACRES ±

D. GORDON,
ET AL
30.37 ACRES ±

M. SHEEHAN
36.25 ACRES ±

I. VINT
4.75 ACRES ±

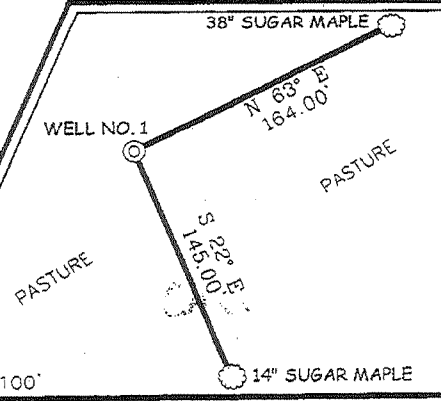
T. VINT
27 ACRES ±

E. VINT
13.5 ACRES ±

NOTES ON SURVEY

1. TIES TO WELLS AND CORNERS ARE BASED ON GRID NORTH FOR THE WV STATE PLANE COORDINATE SYSTEM SOUTH ZONE NAD '27.
2. TIES TO REFERENCES ARE BASED ON MAGNETIC NORTH 09/05/07.
3. LEASE BOUNDARY SHOWN HEREON TAKEN FROM DB 49/119, DB 54/524, DB 123/566, DB 114/22, DB 170/294, DB 47/93, AND DB 71/534.
4. SURFACE OWNER AND ADJOINER INFORMATION TAKEN FROM THE ASSESSOR AND COUNTY CLERK RECORDS OF PENDLETON COUNTY IN JULY, 2006.
5. WELL LAT./LONG. (NAD'27) ESTABLISHED BY DGPS (SUBMETER MAPPING GRADE).

REFERENCES



THERE APPEAR TO BE NO KNOWN PERMITTED WELLS WITHIN 3000'.

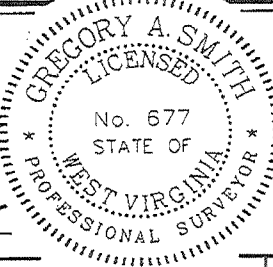
WELL NO. 1

3000'



I THE UNDERSIGNED, HEREBY CERTIFY THAT THIS PLAT IS CORRECT TO THE BEST OF MY KNOWLEDGE AND BELIEF AND SHOWS ALL THE INFORMATION REQUIRED BY LAW AND THE REGULATIONS ISSUED AND PRESCRIBED BY THE DIVISION OF ENVIRONMENTAL PROTECTION.

P.S. 677 *Gregory A. Smith*



(+) DENOTES LOCATION OF WELL ON UNITED STATES TOPOGRAPHIC MAPS.
DATE SEPTEMBER 11, 20 07

OPERATORS WELL NO. GORDON #1

API WELL NO. 47 - 071 - 00023
STATE COUNTY PERMIT
CANCELLED

MINIMUM DEGREE OF ACCURACY 1 / 200 FILE NO. 6501P1 (242 - 52)
PROVEN SOURCE OF ELEVATION DGPS (SUBMETER MAPPING GRADE) SCALE 1" = 800'

STATE OF WEST VIRGINIA
DIVISION OF ENVIRONMENTAL PROTECTION
OFFICE OF OIL AND GAS

WELL TYPE: OIL GAS LIQUID INJECTION WASTE DISPOSAL IF "GAS" PRODUCTION STORAGE DEEP SHALLOW

LOCATION: ELEVATION 3,583' WATERSHED BOUSES RUN OF NORTH FORK SOUTH BRANCH POTOMAC RIVER
DISTRICT CIRCLEVILLE COUNTY PENDLETON QUADRANGLE SPRUCE KNOB 7.5'

SURFACE OWNER DONALD GORDON, RONALD GORDON, AND RANDOLPH GORDON ACREAGE 144 ±
ROYALTY OWNER DONALD GORDON, RONALD GORDON, AND RANDOLPH GORDON LEASE ACREAGE 174.37 ±
LEASE NO. _____

PROPOSED WORK: DRILL CONVERT DRILL DEEPER REDRILL FRACTURE OR STIMULATE PLUG OFF OLD FORMATION _____ PERFORATE NEW FORMATION PLUG AND ABANDON CLEAN OUT AND REPLUG OTHER _____
PHYSICAL CHANGE IN WELL (SPECIFY) _____ TARGET FORMATION ORISKANY SANDSTONE
ESTIMATED DEPTH 8,800'

WELL OPERATOR MEGAENERGY, INC. DESIGNATED AGENT PAUL SMITH
ADDRESS 9085 E. MINERAL CIRCLE, SUITE 270 ADDRESS P.O. BOX 884
ENGLEWOOD, CO 80112 BRIDGEPORT, WV 26330

JUN 24 2011