

LATITUDE

39° 22' 00"

81° 02' 30"

LONGITUDE

2.035  
98 W  
↘

7'5 OGIS topo location

7.5' loc 203 S 15' loc \_\_\_\_\_  
                  98 W (calc.) \_\_\_\_\_

Company \_\_\_\_\_

Farm \_\_\_\_\_

Quad Ellenboro

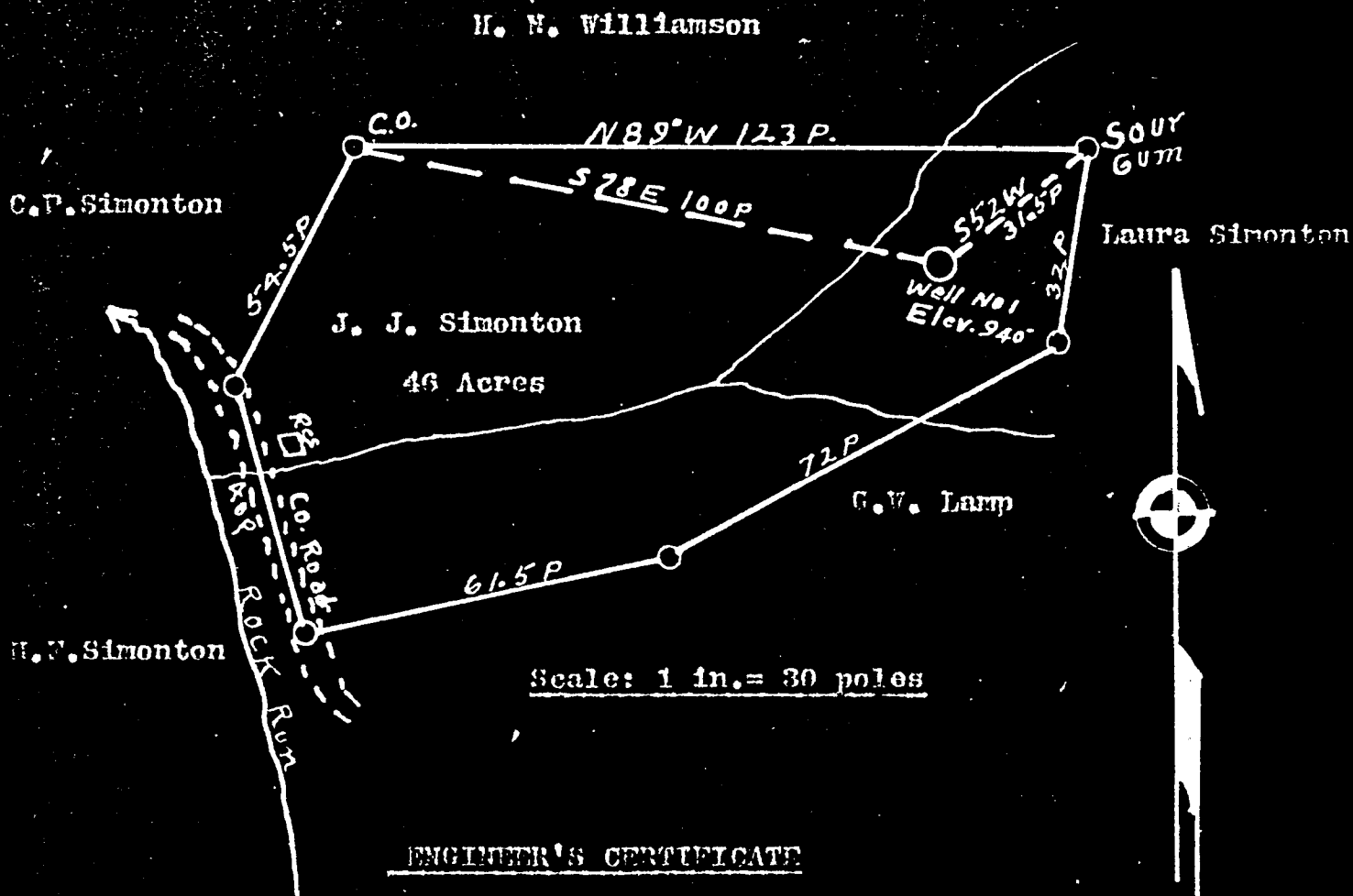
County Pleasant

District Lafayette

WELL LOCATION MAP

File No. 073-44

of the proposed location of Well No. 1, of C. B. Smith and  
 A. B. Hendershot of Parkersburg, West Virginia, on the J. J. Simonton  
 farm, consisting of 46 acres, located in Lafayette District, Pleasants  
 County.



I, the undersigned, hereby certify that this map is correct and shows all the information, to the best of my knowledge and belief, required by the oil and gas section of the mining laws of West Virginia.

*Robert Anderson*

Registered Professional Engineer,  
 Parkersburg, West Virginia.

Acknowledged before me a Notary Public for Wood County, this the 19th day of July, 1935.

*J. B. Anderson*

Notary Public.

My commission expires May 9, 1939.

PLEAS-44

Pleasant 44

J. J. SIMONTON NO. 1 WELL.

No. 57 O.P. (Pleasant)

Lafayette District, Pleasants County, W. Va. 44  
 Max Oil Co., St. Marys, W. Va. (Smith & Hendershot).  
 On 46 acres, surface and mineral rights owned by J. J. Simonton,  
 Hebron, W. Va.  
 No elevation given.  
 8' 9" wood conductor; 8" casing, 455'; 6-5/8", 1142'.  
 No coal encountered.  
 Completion reported to Dept. of Mines Jan. 14, 1936.  
 Well was shot at 1745-1750'.  
 Fresh water at 100'.  
 Oil and gas well.

	Top.	Bottom.
Sandstone, yellow	0	70
Same	70	85
Sand and slate (water at 100')	85	115
Sand, yellow	115	940
Cow Run Sand, broken	940	950
Slate and sand	950	1486
3rd Salt Sand (gas, 1480-1490')	1486	1492
Slate and sand	1490	1650
Sand (gas, 1695-1702'; Oil, top of pay, 1745')	1650	1695
Total depth	.....? (1750?)	
	Just over 1800'	