

LATITUDE

39°25'

81°07'30"

7 1/2' LOC.

0.25W
1.16S

LONGITUDE

7'5 OGIS topo location

7.5' loc. _____ 15' loc _____
(calc.) _____

Company _____

Farm _____

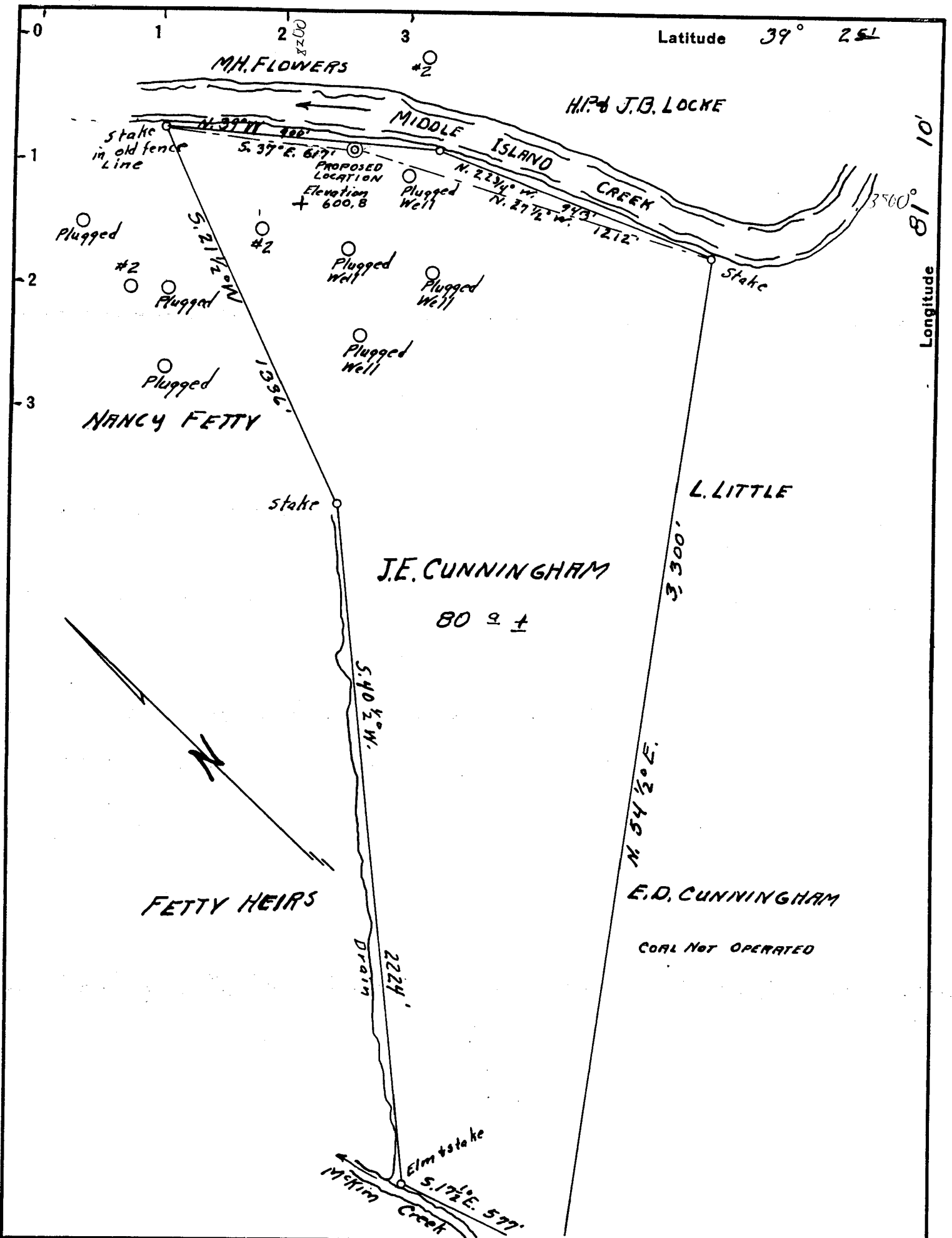
Quad Baven Rock

County Pleasach

District McKim

WELL LOCATION MAP

File No. 073-62



Company DINSMOOR AND COMPANY

Address SAINT MARYS, W.VA.

Farm J.E. CUNNINGHAM

Tract Acres 80± Lease No.

Well (Farm) No. 7 Serial No.

Elevation (Spirit Level) 600.8

Quadrangle SAINT MARYS

County PLEASANTS District MC. KIM

Engineer F.M. Chambers

Engineer's Registration No. 771

File No. Drawing No.

Date 5-22-1936 Scale 1 inch = 400 feet

STATE OF WEST VIRGINIA
DEPARTMENT OF MINES
OIL AND GAS DIVISION
CHARLESTON

WELL LOCATION MAP
FILE NO. Pleas-602

+ Denotes location of well on United States Topographic Maps, scale 1 to 62,500, latitude and longitude lines being represented by border lines as shown.

- Denotes one inch spaces on border line of original tracing.

WEST VIRGINIA DEPARTMENT OF MINES

OIL AND GAS DIVISION

WELL RECORD

Permit No. Pleas-62

Gas well

St. Marys Quad.

Company - Donsmoor & Co.
 Address - St. Marys, W. Va.
 Farm - J. E. Cunningham
 Location -
 Well No. - Seven. Elev. 800
 District - McKim County- Pleasants

CASING & TUBING

10"	35'
8 1/4"	120'
6 1/2"	507'

Surface -
 Mineral - J. E. Cunningham
 St. Marys, W. Va.

6 1/2 casing cemented in with 2 bbls of cement.

Drilling - Commenced -
 Completed -
 Date Shot - Depth- 527-545

Open Flow -

Rock Press. -

Oil -

Fresh Water - 105

Salt Water -

Formation	Color	H ^o	Top	Bottom	Result	Formation	Color	H ^o	Top	Bottom	Result
Sand & Shale				135							
Water				105							
Sand & Shale		S		135	250						
Black Lime	Black	H		250	310						
Big Red	shale			310	400						
Slate & Shells	Grey			400	430						
Slate	Blue			430	450						
Slate	Black			450	465						
Slate or shale	White			465	470						
Pink Rock	Pink			470	508	Reduced hole					
Cow Run Sand				508	545	Gas 508 Oil-524					

RECEIVED
MAY 11 1937
WEST VIRGINIA
GEOLOGICAL SURVEY