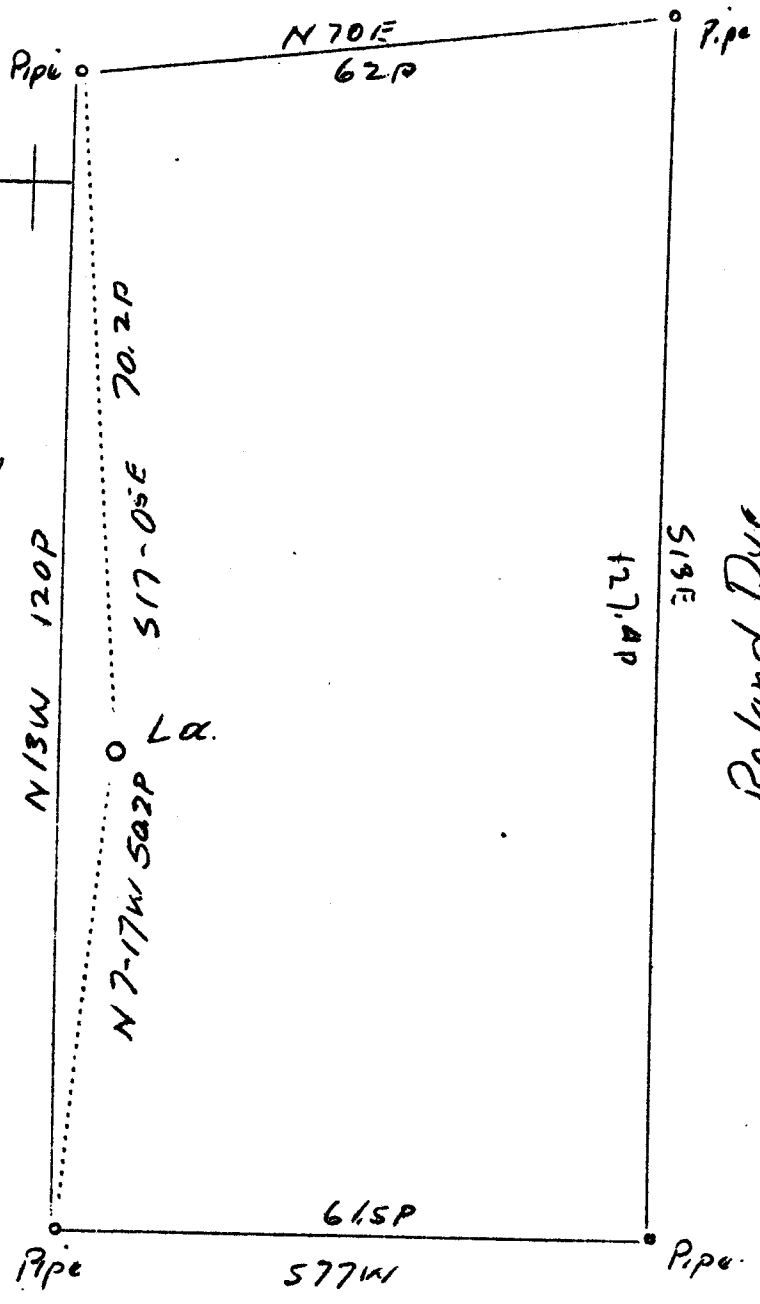


0 1 2 3 LATITUDE 39° 25'

LONGITUDE 81° 10'

C.C. Dye

Ritty Ingram



~~ABD~~ John Schaubach
10/40
Y. 28 W
2.59 P

Company	R.L. Deem & Adam Ward
Address	R.D. #3, Parkersburg, W.Va.
Farm	Cassie C. Dye
Tract	Acres 45 Lease No.
Well (Farm) No.	1 Serial No.
Elevation (Spirit Level)	9071
Quadrangle	St. Marys WC
County	Pleasants District Washington
Engineer	J.E. Anderson
Engineer's Registration No.	Surveyor
File No.	Drawing No.
Date	Aug. 28, 1937 Scale 1"-20 Poles

STATE OF WEST VIRGINIA
Department of Mines
OIL AND GAS DIVISION
CHARLESTON

WELL LOCATION MAP

File No. PLEAS-98

+ Denotes location of well on United States Topographic Maps, scale 1 to 62,500, latitude and longitude lines being represented by border lines as shown.

- Denotes one inch spaces on border line of original tracing.

RECEIVED
SEP 4 1937
GEORGIA
GEOLOGICAL SURVEY

Pleas- 98

Parkersburg, W. Va.
R. #3, Oct. 6, 1940

Dept of Mines.

Pleas 98

#1 wishing to abandon well
#2. Casere C. Dye, St. Marys, W. Va.
submit following:

1 to 65 ft. Rock formation
95" 350" Red Rock

350" 498" Slate 340' 8"

498" 520" Coar. Fin Sand

520" 630" Slate

630" 640 Pink Rock

640" 806 Slate

806" 820 Salt Sand

820" 915 ~~Slate~~ Rock

915" 925 P. Rock

925" 1095 Slate

1095" 1255 (Bottom of well)

Kenneth Ingram Sands

P. R. Ward