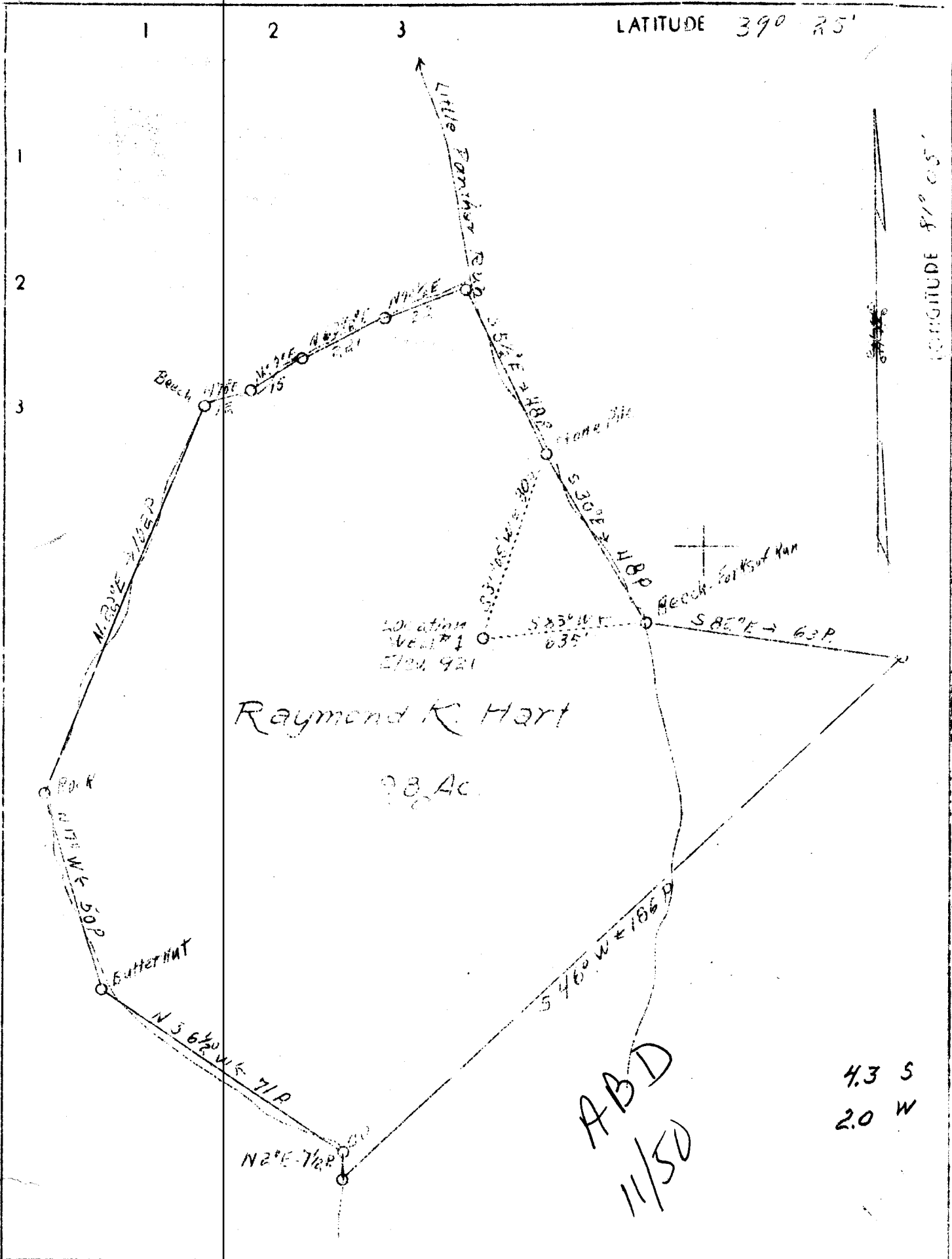


91.



Company	Hart Oil and Gas Co.
Address	St. Marys, W. Va.
Farm	Raymond K. Hart
Tract	Acres 98 Lease No.
Well (Farm) No.	1 Serial No.
Elevation (Spirit Level)	921
Quadrangle	St. Marys C
County	Pleasants District McKim
Engineer	Parker E. Peters
Engineer's Registration No.	485
File No.	Drawing No.
Date	May 7, 1938 Scale 1"=30 Rods

STATE OF WEST VIRGINIA
 Department of Mines
 OIL AND GAS DIVISION
 CHARLESTON

WELL LOCATION MAP

File No. Pleas - 120

Denotes location of well on United States Topographic Maps, scale 1 to 62,500, latitude and longitude lines being represented by border lines as shown.

Denotes one inch spaces on border line of original tracing.

WEST VIRGINIA DEPARTMENT OF MINES

OIL & GAS DIVISION

WELL RECORD

Permit No. Pless-120

St. Marys Quad.

Oil & Gas Well

CASING & TUBING

Company	Hart Oil Co.
Address	St. Marys, W. Va.
Farm	Raymond Hart ACRES 121
Well No.	One ELEV. 921
District	McKim - Pleasant County
Surface	Raymond Hart, St. Marys, W. Va.
Mineral	Marion Hart Hrs., St. Marys, W. Va.
Drilling commenced	May 15, 1938
Drilling completed	Aug. 30, 1938
Date shot	8-31-38 - Depth 1833-1954
Open Flow	-
Volume	-
Rock Pressure	-
Oil	-
Water	*

Formation Color ^{Mar} TOP Base Result Formation Color ^{Mar} TOP Base Result

Formation	Color	Mar	TOP	Base	Result	Formation	Color	Mar	TOP	Base	Result
Soil			0	4		Blue Shale			1040	1045	
Sand			4	19		Black Shale			1045	1065	
Red Rock			19	44		Pink Rock			1065	1080	
Gray Slate			44	54		Lime			1080	1095	
Sand			54	74		Sand			1095	1125	
Red Rock			74	94		White Slate			1125	1140	
Sand			94	127		Sand			1140	1145	
White Slate			127	137		Lime			1145	1155	
Sand			137	190		White Slate			1155	1190	
White Slate			190	230		Slate			1190	1196	
Red Rock			230	240		Lime			1196	1200	
Gray Slate			240	260		Slate			1200	1205	
Sand			260	290		Sand			1205	1215	
Red Rock			290	295		Slate			1215	1230	
White Slate			295	310		Sand			1230	1240	
Red Rock			310	320		White Slate			1240	1250	
Gray Slate			320	335		Lime			1250	1255	
Coal			335	338		White Slate			1255	1285	
White Slate			338	348		Sand			1285	1290	
Gray Slate			348	380		White Slate			1290	1310	
Red Rock			380	400		Lime			1310	1325	
White Slate			400	410		Sand			1325	1355	
Red Rock			410	430		Slate			1355	1390	
White Slate			430	445		Lime			1390	1400	
Lime			445	450		Coal			1400	1410	
Blue Slate			450	460		Lime			1410	1415	
Coal			460	461		Shale			1415	1430	
Lime			461	465		Sand			1430	1495	
Sand			465	500		Black Slate			1495	1500	
Water 445-500 10 in 300'						Sand			1500	1505	
White Slate			500	505		White Slate			1505	1525	
Red Rock			505	520		Broken Sand			1525	1545	
White Slate			520	525		Sand			1545	1575	
Sand			525	585		Black Slate			1575	1590	
White Slate			585	575		Sand			1590	1640	
Black Slate			575	595		Break			1640	1670	
Lime			595	605		Sand			1670	1681	
Pink Rock			605	615		Slate			1681	1694	
Sand			615	645		Sand			1694	1705	
Lime			645	655		Slate			1705	1715	
Red Rock			655	670		Sand			1715	1730	
White Slate			670	675		Broken Sand			1730	1735	
Blue Shale			675	680		Sand			1735	1745	
Lime			680	705		Slate			1745	1753	
Red Rock			705	730		Sand			1763	1767	
White Slate			730	745		Slate			1767	1772	
Red Rock			745	760		Sand			1772	1781	
Lime			760	780		Break			1781	1783	
Red Rock			780	810		Gray Slate			1783	1789	
White Slate			810	820		Slate Sharp Sand			1789	1819	
Lime			820	825		Sand			1819	1833	
Black Shale			825	835		Oil				1833	
Pink Rock			835	850		Big Injun			1833	1995	
Blue Slate			850	870		Gas			1891	1897	
Pink Rock			870	895		Oil			1954	1964	
Lime			895	915		Gas			1950	1954	
Slate			915	940							
Lime			940	960		Shot 45 qts.					
Black Slate			960	970		Bottom of hole 2002					
White Slate			970	1010		Oil			1970	1973	
Lime			1010	1030		Oil			1981	1988	
White Slate			1030	1040		(Steel Line)					