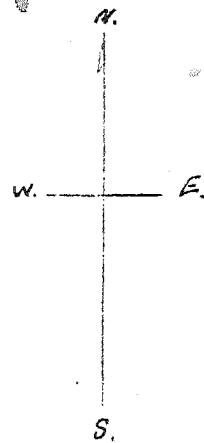
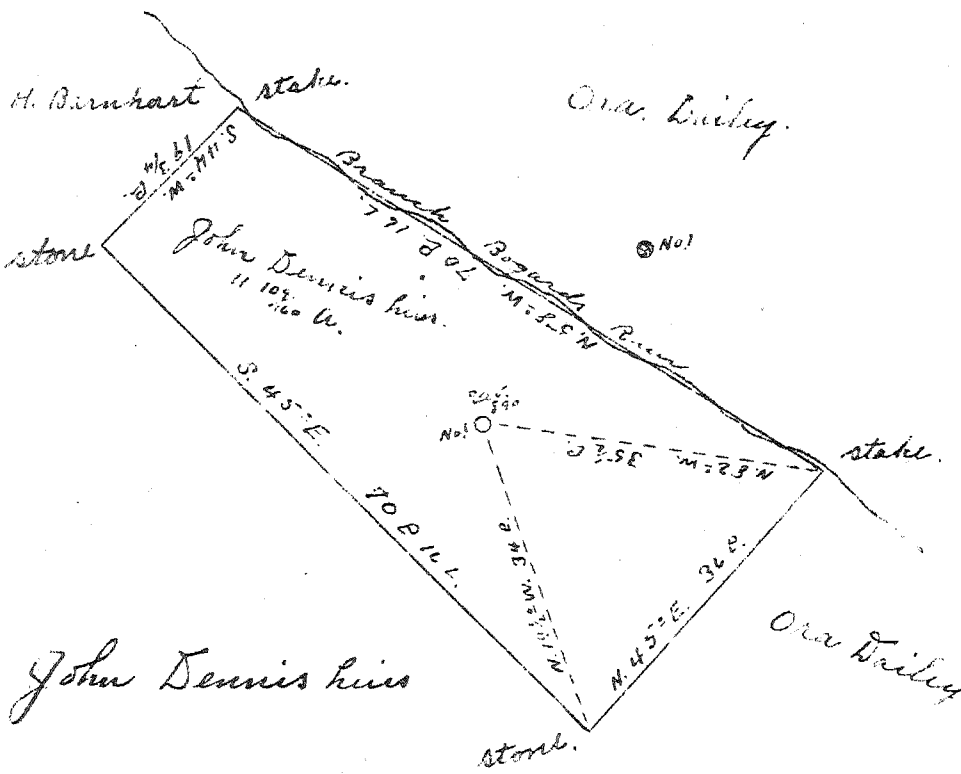


2

3

Latitude 39 30'

Longitude 81 05'



1.81 W.  
4.98 S.

New Location    
 Drill Deeper    
 Abandonment

Company J. C. Ruschman & others  
 Address Raven Rock W. Va.  
 Farm John Dennis heirs.  
 Tract \_\_\_\_\_ Acres 11 1/2 Lease No. \_\_\_\_\_  
 Well (Farm) No. 1 Serial No. \_\_\_\_\_  
 Elevation (Spirit Level) 890'  
 Quadrangle St. Marys NC W. Va.  
 County Pleasants District Union  
 Engineer Geo. Triplett  
 Engineer's Registration No. \_\_\_\_\_  
 File No. \_\_\_\_\_ Drawing No. \_\_\_\_\_  
 Date May 13, 1940 Scale 20 P = 1"

STATE OF WEST VIRGINIA  
 DEPARTMENT OF MINES  
 OIL AND GAS DIVISION  
 CHARLESTON

WELL LOCATION MAP  
 FILE NO. PLEAS-176

+ Denotes location of well on United States Topographic Maps, scale 1 to 62,500, latitude and longitude lines being represented by border lines as shown.

- Denotes one inch spaces on border line of original tracing.

WEST VIRGINIA DEPARTMENT OF MINES  
OIL & GAS DIVISION  
W E L L R E C O R D

Permit No. Pleas-176  
St. Marys Quad.

Oil Well

Company J. C. Ruckman et al  
Address Box 388, Tiltonville, Ohio  
Farm John Dennis Hrs. ACRES 60  
Location Stouts Run  
Well No. 1 ELEV. 890  
District Union - Pleasants County  
Surface & Mineral John Dennis Hrs., Bens Run, W. Va.  
Commenced June 1940  
Completed Nov. 23, 1940  
Shot Nov. 23, 1940 - depth 1843-1855  
Open Flow Not taken  
Rock Pressure 200 lbs. - hrs.  
Oil 10 bbls.  
Salt Water 1100 and 1120

CASING & TUBING

10	20	20
8-1/4	195	pulled
6-5/8	858	858

Perf. top - 1849  
Perf. bot - 1852

420' 4/78 packer  
on top at 830. Packer  
on bottom at 1250

No coal

Big Red	rd	s	575	670	
Sand	gr	s	855	900	sand and lime
Slate	wh	m	900	910	
Sand	gr	m	910	925	
Slate	bk	s	925	1025	
White	wh	sol	1025	1080	
Sand	bl	m	1080	1150	
Slate	bk	s	1150	1210	
Sand	gr	m	1210	1285	
Slate	bk	m	1285	1380	
Sand	gr	m	1380	1425	3rd Salt Sand
Slate	bk	s	1425	1465	
Sand	gr	m	1465	1500	Gas sand
Shale	bk	sol	1500	1555	
Sand	dk	m	1555	1560	Maxon Sand
Slate	dk	s	1560	1587	
Lime	lt	h	1587	1667	Big Lime
Shale	dk	m	1667	1670	
Sand	bl	m	1670	1700	Keener
Shale	dk	m	1700	1713	
Sand	bl	h	1713	1830	Injun
Sand	wh	h	1830	1855	Oil Pay 1843 to 1855 Injun
Sand	gr	m	1855	1864	Injun
Shale	dk	m	1864	1869	1869 bottom hole