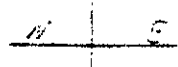


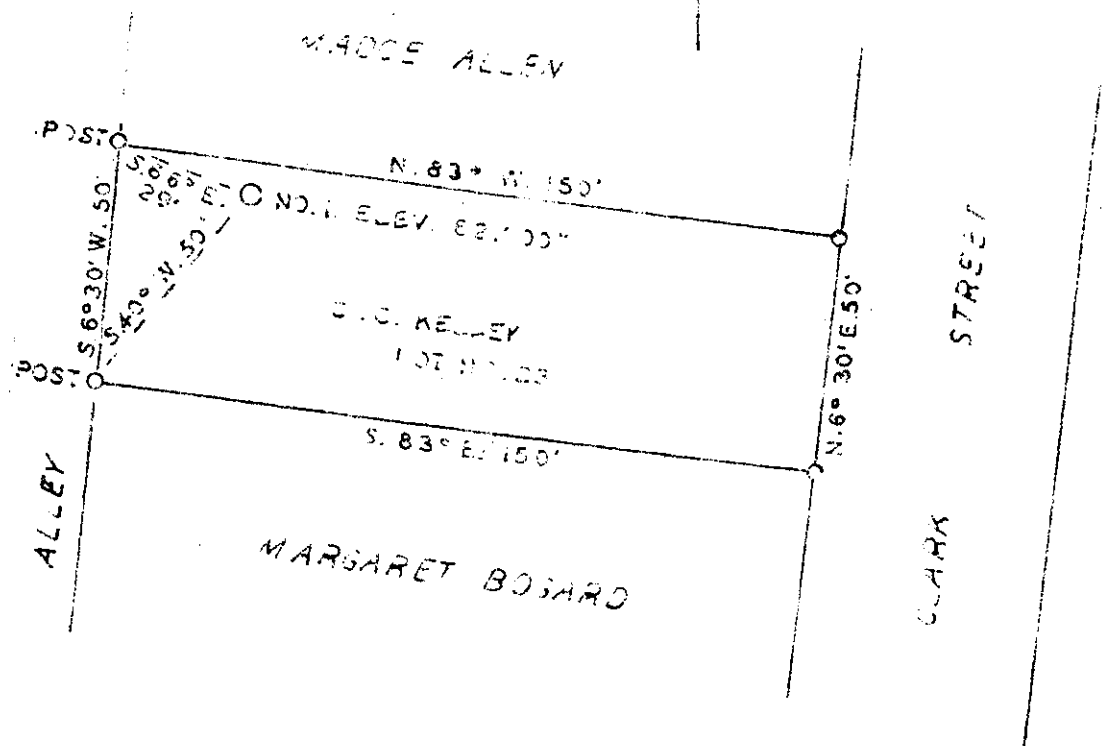
77

Latitude 39

Longitude 81° 15'



2.635
0.55 W
+



BELMONT W. VA.

ABD
8/53

Crowded

New Location
 Drill Deeper
 Abandonment

Company WILLIAM H. MORROW
 Address 82 Hawthorne Ave. Pittsburgh 5, Pa.
 Farm C. C. KELLEY
 Tract Acres LOT 23 Lease No. _____
 Well (Farm) No./ _____ Serial No. _____
 Elevation (Spirit Level) 621' 00"
 Quadrangle MARIETTA EC
 County PLEASANTS District GRANT
 Survey by Homer W. Myers George R. Clarke
 Engineer's Registration No. 102
 File No. _____ Drawing No. _____
 Date APRIL 3, 1950 Scale 1" = 40'

STATE OF WEST VIRGINIA
 DEPARTMENT OF MINES
 OIL AND GAS DIVISION
 CHARLESTON

WELL LOCATION MAP
 FILE NO. PLEAS-369

+ Denotes location of well on United States Topographic Maps, scale 1 to 62,500, latitude and longitude lines being represented by border lines as shown.
 - Denotes one inch spaces on border line of original tracing.

IMPERIAL TRACING CO. INC.
 K & F CO., N. Y.

WEST VIRGINIA DEPARTMENT OF MINES
OIL & GAS DIVISION
W E L L R E C O R D

Permit No. Pleas 369

Marietta Quad.

Company

Address

Farm

Location

Well No.

District

Surface

Mineral

Commenced

Completed

Fresh Water

Salt Water

William H. Morrow

82 Hawthorne Ave., Pittsburgh, 5, Pa.

C.C. Kelly Acres Lot

10 85 85

6 5/8 140

#1 Elev. 621'

Grant Pleasant

C.C. Kelly, Belmont, W. Va.

Cup type Packer

Size 10"

Depth 140'

Same

April 17, 1950

May 12, 1950

60-85'; 110-115'

580'; 625' H.F.

Gas Well
CASING & TUBING

Top Soil	Br	S	0	25
Sand Gravel	Br	S	25	85
Slate	Gr	S	85	135
Lime	Wh	H	135	140
Sandstone	Wh	S	140	156
Slate	Drk Gr	H	156	202
Sandstone	Lt Gr	H	202	256
Sandstone with lime shells			256	300
Sand shells	Gr	H	300	360
Slate	Blk	H	360	370
Limeshell	Gr	H	370	375
Slate	Blk	H	375	385
Slate	Wh	H	385	405
Sandstone	Gr	H	405	460
Slate	Blk	H	460	470
Sandstone	Gr	H	470	500
Slate	Blk	H	500	505
Sandstone	Wh	H	505	530
Slate	Blk	H	530	560
Sandstone	Wh	H	560	580
Slate	Blk	H	580	589
Sandstone	Gr	H	589	594
Slate	Blk	H	594	634
Slate Breaks	Gr	H	634	675
Slate	Gr	H	675	685
Slate & Sand Shells	Gr	H	685	725
Sandstone	Gr	H	725	742

Show oil 410-425

Show oil 470

Gas 560

Gas, water 635 H.F.