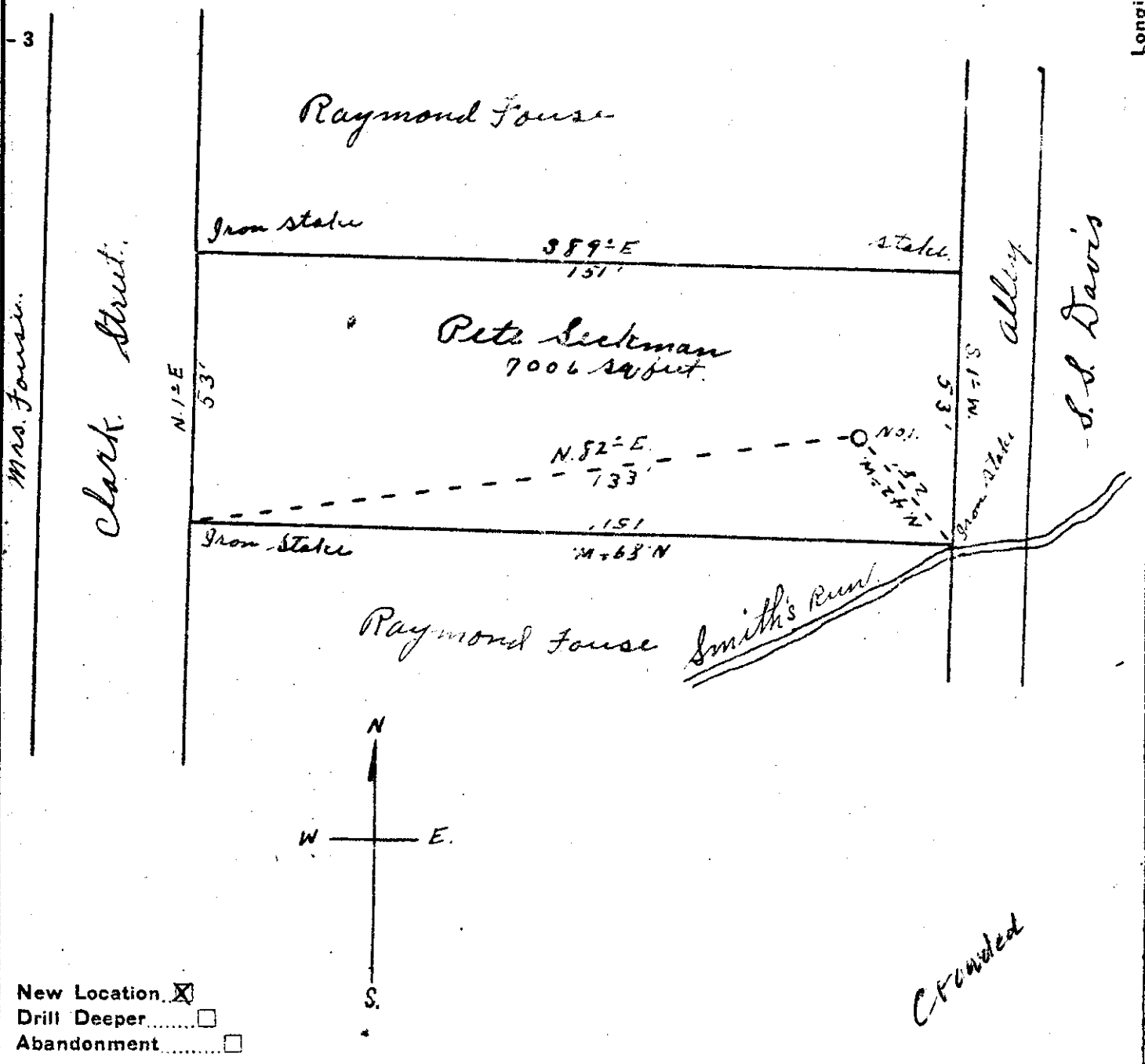


2.67 S  
0.49 W



New Location   
 Drill Deeper   
 Abandonment

*C-Found*

Company Lan Henthorn  
 Address Route 2 Sistersville W. Va.  
 Farm Pete Seckman  
 Tract \_\_\_\_\_ Acres 7006' Lease No. \_\_\_\_\_  
 Well (Farm) No. 1 Serial No. \_\_\_\_\_  
 Elevation (Spirit Level) 618'  
 Quadrangle Marquette  
 County Pleasants District Grant  
 Engineer Robert R. Anderson  
 By Jno. Triplett, Surveyor  
 Engineer's Registration No. 296  
 File No. \_\_\_\_\_ Drawing No. \_\_\_\_\_  
 Date May 4, 1950 Scale 1" = 50'

STATE OF WEST VIRGINIA  
 DEPARTMENT OF MINES  
 OIL AND GAS DIVISION  
 CHARLESTON

**WELL LOCATION MAP**  
 FILE NO. PLEAS-378-1

+ Denotes location of well on United States Topographic Maps, scale 1 to 62,500, latitude and longitude lines being represented by border lines as shown.

- Denotes one inch spaces on border line of original tracing.

WEST VIRGINIA DEPARTMENT OF MINES  
OIL & GAS DIVISION  
W E L L R E C O R D

Permit No. Pleas 378

Marietta Quad.

Company

Address

Farm

Location

Well No.

District

Surface

Commenced

Completed

Oil

Fresh Water

Dan Henthorn

Eistersville, W.Va. R.2

- Acres .. lot

1 Elev. 618'

Grant Pleasants County

Peter Seckman, Belmont, W.Va.

May 22, 1950

May 30, 1950

one bbls. 1st 24 hrs.

70'

Oil Well

CASING & TUBING

8 1/2	60	60
6 5/8	125	125
2	510	510

Soil Dk	S	0	20
Gravel Br	S	20	60
Slate Wh	S	60	100
Red Rock	S	100	120
Sand Wh	S	130	200
Slate Dk	S	200	240
Sand Wh	S	240	320
Slate Wh	S	320	360
Sand Wh	S	360	430
Slate Dk	S	430	490
Sand Wh	H	490	510

Oil 500'