

(+) DENOTES LOCATION OF WELL ON UNITED STATES TOPOGRAPHIC MAPS

FILE NO. _____
DRAWING NO. 1
SCALE 1" = 2000'
MINIMUM DEGREE OF ACCURACY 1 in 200
PROVEN SOURCE OF ELEVATION GPS
submeter unit

I THE UNDERSIGNED, HEREBY CERTIFY THAT THIS PLAT IS CORRECT TO THE BEST OF MY KNOWLEDGE AND BELIEF AND SHOWS ALL THE INFORMATION REQUIRED BY LAW AND THE RULES ISSUED AND PRESCRIBED BY THE DEPARTMENT OF ENVIRONMENTAL PROTECTION.

(SIGNED) David A. Jackson
R.P.E. _____ P.S. 708



STATE OF WEST VIRGINIA
Division of Environmental Protection
OFFICE OF OIL AND GAS

DATE May 5, 2017
OPERATOR'S WELL NO. P2N4U
API WELL NO. _____

WELL TYPE: OIL X GAS X LIQUID INJECTION X WASTE DISPOSAL _____
(IF "GAS") PRODUCTION X STORAGE X DEEP X SHALLOW _____

LOCATION: ELEVATION 712.2' WATER SHED Middle Island Creek
DISTRICT Union COUNTY Pleasants
QUADRANGLE Bens Run 7 1/2'

SURFACE OWNER Morgan Valley Farms, Inc. ACREAGE 27.451 Ac.
OIL & GAS ROYALTY OWNER Morgan Valley Farms, Inc. LEASE ACREAGE 06.1672047
LEASE NO. P7220

PROPOSED WORK: DRILL X CONVERT _____ DRILL DEEPER _____ REDRILL _____ FRACTURE OR STIMULATE X PLUG OFF OLD FORMATION _____ PERFORATE NEW FORMATION X OTHER PHYSICAL CHANGE IN WELL (SPECIFY) _____

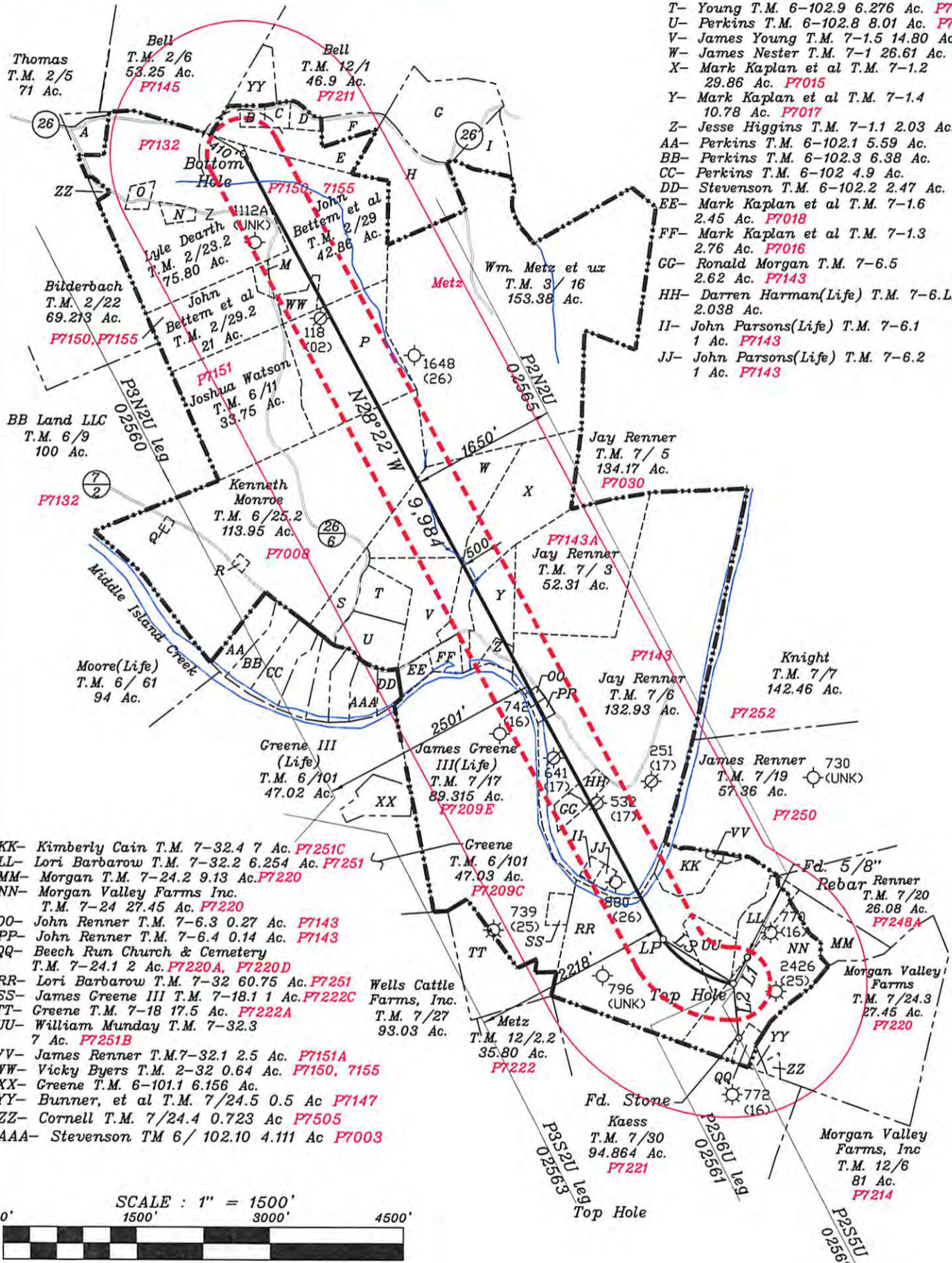
PLUG AND ABANDON _____ CLEAN OUT AND REPLUG _____
TARGET FORMATION Point Pleasant ESTIMATED DEPTH TVD = 10,590'; TMD = 22,009'
WELL OPERATOR Jay-Bee Oil & Gas, Inc. DESIGNATED AGENT Randy Broda
ADDRESS 1720 Route 22 E, Union, NJ 07083 ADDRESS 3570 Shields Hill Rd., Cairo, WV 26337

EXHIBIT MAP FOR JAY BEE

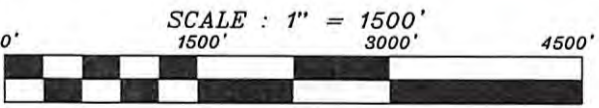
WELL NO. P2N4U
Union District, Pleasants County
March 24, 2017

- A- Bennett T.M. 2-23.3 0.53 Ac.
- B- Lyle Dearth T.M. 2-9 1.55 Ac. **P7148A**
- C- Lyle Dearth T.M. 2-9.4 1.38 Ac. **P7148**
- D- Gary Taylor T.M. 2-11 & 9.3 2.5 Ac. **P7148B**
- E- Gary Taylor T.M. 2-9.2 22.169 Ac. **P7147**
- F- Watkins T.M. 2-9.5 4.231 Ac. **P7147A**
- G- Dearth T.M. 3-16.1 15 Ac.
- H- Dearth T.M. 3-16.3 19.04 Ac. **Metz**
- I- Johnson T.M. 3-16.2 6.57 Ac.
- J- Carpenter T.M. 3-18 1.5 Ac.
- K- Carpenter T.M. 3-17 15.94 Ac.
- L- Collins T.M. 3-20 15.14 Ac.
- M- Gene Parsons T.M. 2-29.1 1.5 Ac. **P7154**
- N- Lyle C. & Janice K. Death T.M. 2-23.4 1.62 Ac. **P7132**
- O- Robert Kemp T.M. 2-23 1.55 Ac.. **P7508**

- P- Alex Haught T.M. 6-12 38.25 Ac. **P7151**
- Q- Kenneth Monroe T.M. 6-25 0.54 Ac.
- R- Kenneth Monroe T.M. 6-25.1 0.51 Ac.
- S- Perkins T.M. 6-102.6 5.8 Ac. **P7011**
- T- Young T.M. 6-102.9 6.276 Ac. **P7007**
- U- Perkins T.M. 6-102.8 8.01 Ac. **P7011**
- V- James Young T.M. 7-1.5 14.80 Ac. **P7007**
- W- James Nester T.M. 7-1 26.61 Ac. **P7012**
- X- Mark Kaplan et al T.M. 7-1.2 29.86 Ac. **P7015**
- Y- Mark Kaplan et al T.M. 7-1.4 10.78 Ac. **P7017**
- Z- Jesse Higgins T.M. 7-1.1 2.03 Ac. **P7014**
- AA- Perkins T.M. 6-102.1 5.59 Ac.
- BB- Perkins T.M. 6-102.3 6.38 Ac.
- CC- Perkins T.M. 6-102 4.9 Ac.
- DD- Stevenson T.M. 6-102.2 2.47 Ac. **P7005**
- EE- Mark Kaplan et al T.M. 7-1.6 2.45 Ac. **P7018**
- FF- Mark Kaplan et al T.M. 7-1.3 2.76 Ac. **P7016**
- GG- Ronald Morgan T.M. 7-6.5 2.62 Ac. **P7143**
- HH- Darren Harman(Life) T.M. 7-6.LE 2.038 Ac.
- II- John Parsons(Life) T.M. 7-6.1 1 Ac. **P7143**
- JJ- John Parsons(Life) T.M. 7-6.2 1 Ac. **P7143**



- KK- Kimberly Cain T.M. 7-32.4 7 Ac. **P7251C**
- LL- Lori Barbarow T.M. 7-32.2 6.254 Ac. **P7251**
- MM- Morgan T.M. 7-24.2 9.13 Ac. **P7220**
- NN- Morgan Valley Farms Inc. T.M. 7-24 27.45 Ac. **P7220**
- OO- John Renner T.M. 7-6.3 0.27 Ac. **P7143**
- PP- John Renner T.M. 7-6.4 0.14 Ac. **P7143**
- QQ- Beech Run Church & Cemetery T.M. 7-24.1 2 Ac. **P7220A, P7220D**
- RR- Lori Barbarow T.M. 7-32 60.75 Ac. **P7251**
- SS- James Greene III T.M. 7-18.1 1 Ac. **P7222C**
- TT- Greene T.M. 7-18 17.5 Ac. **P7222A**
- UU- William Munday T.M. 7-32.3 7 Ac. **P7251B**
- VV- James Renner T.M. 7-32.1 2.5 Ac. **P7151A**
- WW- Vicky Byers T.M. 2-32 0.64 Ac. **P7150, 7155**
- XX- Greene T.M. 6-101.1 6.156 Ac.
- YY- Bunner, et al T.M. 7/24.5 0.5 Ac. **P7147**
- ZZ- Cornell T.M. 7/24.4 0.723 Ac. **P7505**
- AAA- Stevenson TM 6/ 102.10 4.111 Ac. **P7003**



| LEGEND | |
|--------|---|
| | 1500' BOREPATH OFFSET |
| | UNIT BOUNDARY 410' FROM WELL BORE PATH, TH & BH |
| | FINAL LEASE LINE |
| | INTERIOR TRACT LINE |
| | ADJOINER LINE |
| | ROAD LINE |
| | STREAM LINE |

Jackson Surveying Inc.
677 W. Main Street
Clarksburg, WV 26301
(304) 623-5851



RECEIVED
Office of Oil and Gas
MAR 27 2017
WV Department of Environmental Protection

06/16/2017