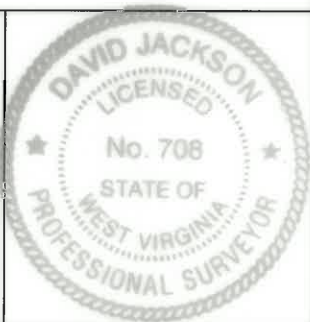


FILE NO. \_\_\_\_\_  
 DRAWING NO. 1  
 SCALE 1" = 2000'  
 MINIMUM DEGREE OF ACCURACY 1 in 200  
 PROVEN SOURCE OF ELEVATION GPS  
submeter unit

I THE UNDERSIGNED, HEREBY CERTIFY THAT THIS PLAT IS CORRECT TO THE BEST OF MY KNOWLEDGE AND BELIEF AND SHOWS ALL THE INFORMATION REQUIRED BY LAW AND THE RULES ISSUED AND PRESCRIBED BY THE DEPARTMENT OF ENVIRONMENTAL PROTECTION.

(SIGNED) David J. Jackson  
 R.P.E. \_\_\_\_\_ P.S. 708



STATE OF WEST VIRGINIA  
 Division of Environmental Protection  
 OFFICE OF OIL AND GAS

DATE May 26, 2017  
 OPERATOR'S WELL NO. P2S6U  
 API WELL NO. \_\_\_\_\_

WELL TYPE: OIL GAS  LIQUID INJECTION WASTE DISPOSAL STATE 47 COUNTY 073 PERMIT MOO  
 (IF 'GAS') PRODUCTION STORAGE  DEEP SHALLOW  
 LOCATION: ELEVATION 712.2' WATER SHED Middle Island Creek  
 DISTRICT Union COUNTY Pleasants  
 QUADRANGLE Bens Run 7 1/2'

SURFACE OWNER Morgan Valley Farms, Inc. ACREAGE 27.451 Ac.  
 OIL & GAS ROYALTY OWNER Morgan Valley Farms, Inc. LEASE ACREAGE 082042047  
 LEASE NO. P7220

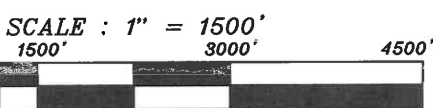
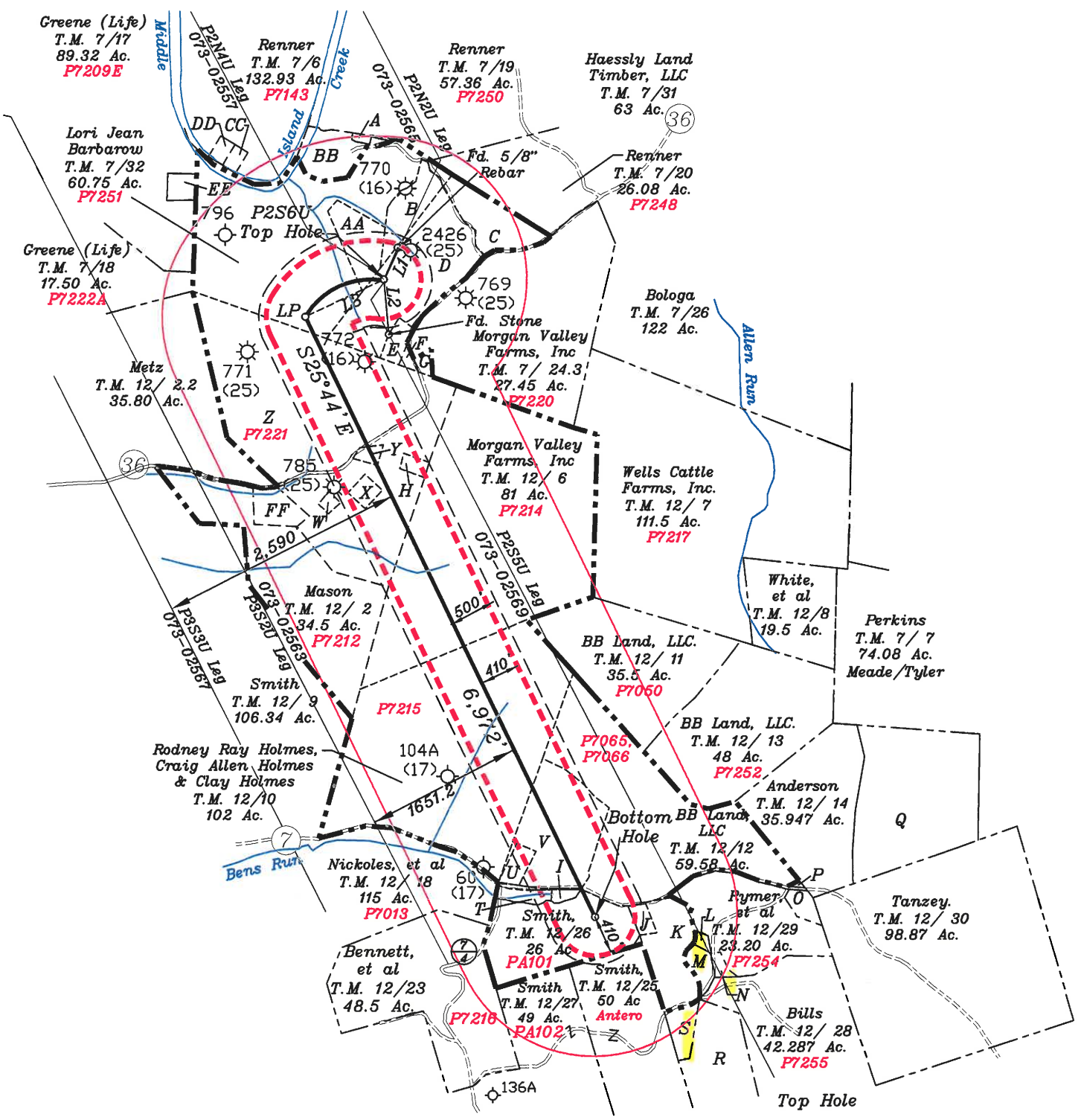
PROPOSED WORK: DRILL  CONVERT DRILL DEEPER REDRILL FRACTURE OR  
STIMULATE  PLUG OFF OLD FORMATION PERFORATE NEW  
 FORMATION  OTHER PHYSICAL CHANGE IN WELL (SPECIFY) \_\_\_\_\_

PLUG AND ABANDON CLEAN OUT AND REPLUG \_\_\_\_\_  
 TARGET FORMATION Point Pleasant ESTIMATED DEPTH TVD = 10,590'; TMD = 18,435'  
 WELL OPERATOR Jay-Bee Oil & Gas, Inc. DESIGNATED AGENT Randy Broda  
 ADDRESS 1720 Route 22 E, Union, NJ 07083 ADDRESS 3570 Shields Hill Rd., Cairo, WV 26337

# EXHIBIT MAP FOR JAY BEE

WELL NO. P2S6U  
Union District, Pleasants County  
May 26, 2017

- A- Renner T.M. 7/32.1 2.5 Ac P7251A
- B- Barbarow T.M. 7/32.2 6.254 Ac. P7251
- C- Morgan Valley Farms, Inc. T.M. 7/24.2 9.13 Ac P7220
- D- Morgan Valley Farms, Inc.  
T.M. 7/24 27.45 Ac P7220
- E- Beech Run Church & Cemetry  
T.M. 7/24.1 2 Ac. P7220A
- F- Bunner, et al T.M. 7/24.5 0.5 Ac P7220D
- G- Cornell T.M. 7/24.4 0.723 Ac P7220B
- H- Cemetery T.M. 12/35 P7221B
- I- Hall T.M. 12/19.1 1 Ac PA104
- J- Lowther T.M. 12/29.1 1.03 Ac P7254A
- K- Lowther T.M. 12/28.4 11.34 Ac P7254G
- L- Renner et al T.M. 12/29.4 0.578 Ac P7254D



LEGEND	
	1500' BOREPATH OFFSET
	UNIT BOUNDARY 410' FROM WELL BORE PATH, TH & BH
	FINAL LEASE LINE
	INTERIOR TRACT LINE
	ADJOINER LINE
	ROAD LINE
	STREAM LINE

Jackson Surveying Inc.  
677 W. Main Street  
Clarksburg, WV 26301  
(304) 623-5851

- M- Renner, et al T.M. 12/29.3 2.291 Ac P7254G
- N- Baker T.M. 12/28.3 1.102 Ac P7254F
- O- Templeton T.M. 12/28.2 2.33 Ac
- P- Murphy T.M. 12/29.2 0.177 Ac
- Q- Hamilton T.M. 12/16 42 Ac
- R- Grove T.M. 12/28.5 21 Ac P7255A
- S- Grove T.M. 12/28.1 3.1 Ac Antero
- T- Hileman, et al T.M. 12/19 2 Ac PA08/04/2017
- U- Wise T.M. 12/20 1.83 Ac P7065 & P7068
- V- Street T.M. 12/12.1 17 Ac P7065 & P7068
- W- Miller, et al T.M. 12/4 1.5 Ac
- X- Kaess T.M. 12/39 0.64 Ac P7221A
- Y- Kaess T.M. 12/5 1 Ac P7221
- Z- Kaess T.M. 7/29&30 97.364 Ac P7221
- AA- Wm. Munday T.M. 7/ 32.3 7 Ac P7251B
- BB- Cain T.M. 7/ 32.4 7 Ac P7251C
- CC- Parsons T.M. 7/6.2 1 Ac
- DD- Cain T.M. 7/6.1 1 Ac
- EE- Greene T.M. 7/18.1 1 Ac
- FF- Wells T.M. 12/3 10.03 Ac P7212A & B