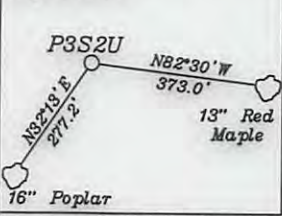
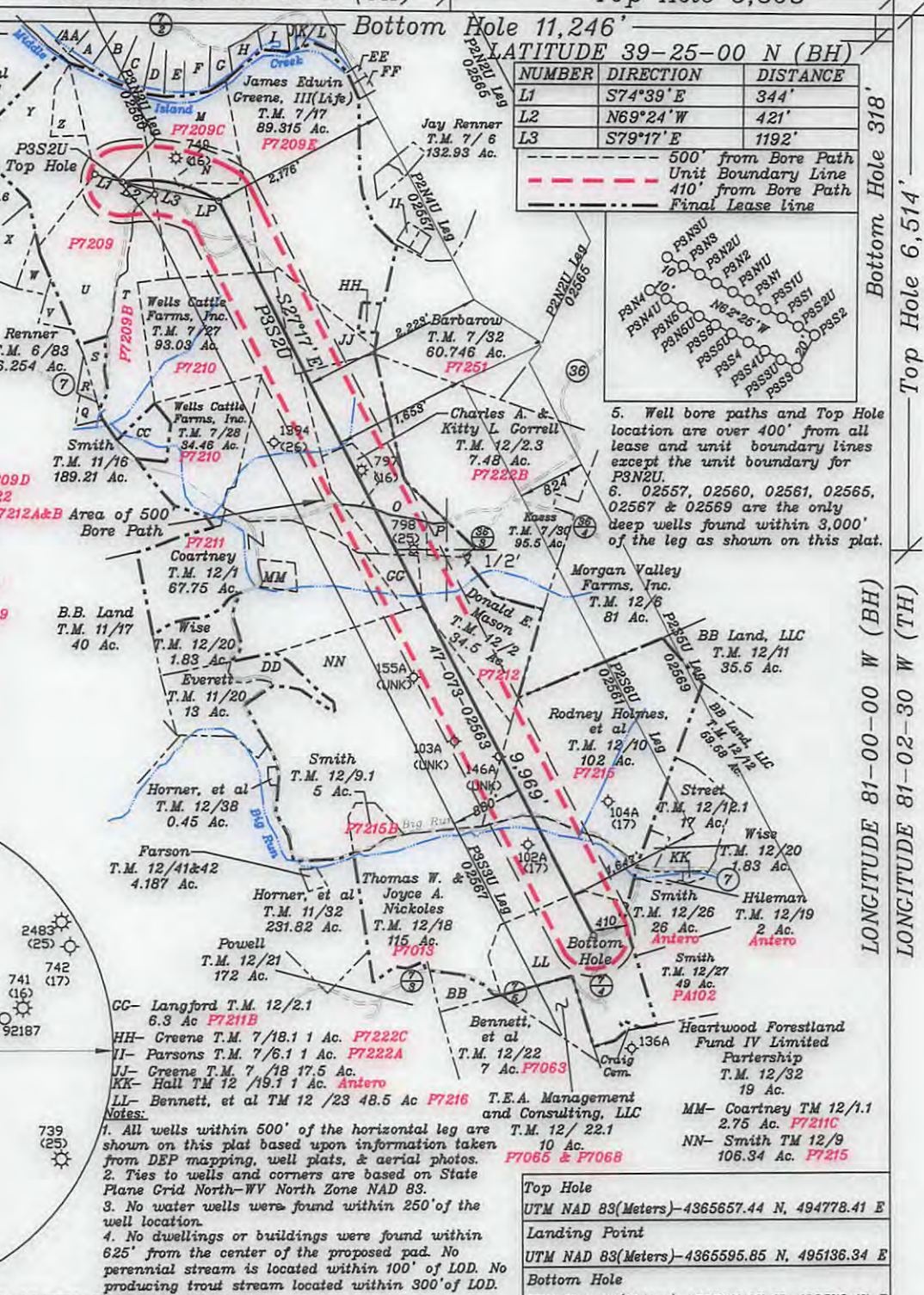
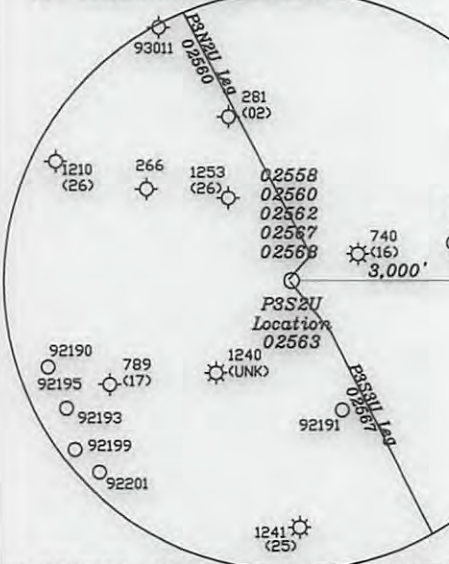


References:



- A-Perkins T.M. 6/102.3 6.378 Ac.
- B-Perkins T.M. 6/102.4 6.680 Ac.
- C-Perkins T.M. 6/102 4.896 Ac.
- D-Perkins T.M. 6/102.5 4.455 Ac.
- E-Kibble T.M. 6/102.7 4.245 Ac.
- F-Stevenson T.M. 6/102.10 4.111 Ac.
- G-Stevenson T.M. 6/102.2 2.466 Ac.
- H-Kaplan T.M. 7/1.6 24.48 Ac.
- I-Kaplan T.M. 7/1.3 2.761 Ac.
- J-Kaplan p/o T.M. 7/1.2 29.863 Ac.
- K-Kaplan p/o T.M. 7/1.4 10.783 Ac.
- L-Higgins T.M. 7/1.1 20.28 Ac.
- M-James Edwin Greene, III(Life) T.M. 6/101 47.029 Ac.
- N-James Edwin Greene, III and Cynthia J. Greene T.M. 7/101.1 6.156 Ac. **F7209D**
- O-Ruth Metz(Life) T.M. 12/2.2 35.8 Ac. **F7222**
- P-Patrick Joseph Wells T.M. 12/3 10.03 Ac. **F7212A&B** Area of 500'
- Q-Regular Baptist Church of Jesus Christ T.M. 6/108 2 Ac. **F7190B**
- R-Renner T.M. 6/ 83.1 1.42 Ac
- S-Jay Summers T.M. 6/ 86 3.67 Ac. **F7209A**
- T-Stewart T.M. 6/85 27.53 Ac. **F7209B**
- U-Jerry Summers T.M. 6/86.1 56.99 Ac **F7209**
- V-Renner T.M. 6/83.2 2.776 Ac. **F7189C**
- W-Renner T.M. 6/82.4 3.581 Ac. **F7189B**
- X-Renner T.M. 6/ 82 16.286 Ac. **F7189**
- Y-Brewer, et al T.M. 6/82 32.26 Ac. **F7506**
- Z-Brewer, et al T.M. 6/83 7.74 Ac. **F7507**
- AA-Perkin, T.M. 6/102.1 5.594 Ac. **F7506**
- BB-Bennett et al T.M. 12/24 7 Ac **F7084**
- CC-Corrigan T.M. 6/105 2.165 Ac. **F7210A**
- DD-Smith T.M. 12/9.2 6.66 Ac. **F7215A**
- EE-Renner T.M. 7/6.3 0.27 Ac.
- FF-Renner, T.M. 7/6.3 0.14 Ac.



(+) DENOTES LOCATION OF WELL ON UNITED STATES TOPOGRAPHIC MAPS

FILE NO. \_\_\_\_\_  
 DRAWING NO. 1  
 SCALE 1" = 2000'  
 MINIMUM DEGREE OF ACCURACY 1 in 200  
 PROVEN SOURCE OF ELEVATION GPS  
submeter unit

I THE UNDERSIGNED, HEREBY CERTIFY THAT THIS PLAT IS CORRECT TO THE BEST OF MY KNOWLEDGE AND BELIEF AND SHOWS ALL THE INFORMATION REQUIRED BY LAW AND THE RULES ISSUED AND PRESCRIBED BY THE DEPARTMENT OF ENVIRONMENTAL PROTECTION.

(SIGNED) David Jackson  
 R.P.E. \_\_\_\_\_ P.S. 708



STATE OF WEST VIRGINIA  
 Division of Environmental Protection  
 OFFICE OF OIL AND GAS

DATE May 5, 2017  
 OPERATOR'S WELL NO. P3S2U  
 API WELL NO. \_\_\_\_\_

WELL TYPE: OIL X GAS X LIQUID INJECTION \_\_\_\_\_ WASTE DISPOSAL \_\_\_\_\_  
 (IF "GAS") PRODUCTION X STORAGE \_\_\_\_\_ DEEP X SHALLOW \_\_\_\_\_

LOCATION: ELEVATION 839.27' WATER SHED Middle Island Creek  
 DISTRICT Union COUNTY Pleasants  
 QUADRANGLE Bens Run 7 1/2'

SURFACE OWNER Jerry Lee Summers ACREAGE 56.99  
 OIL & GAS ROYALTY OWNER Jerry Lee Summers LEASE ACREAGE 56.99  
 LEASE NO. P7209 08/04/2017

PROPOSED WORK: DRILL X CONVERT \_\_\_\_\_ DRILL DEEPER \_\_\_\_\_ REDRILL \_\_\_\_\_ FRACTURE OR STIMULATE X PLUG OFF OLD FORMATION \_\_\_\_\_ PERFORATE NEW FORMATION X OTHER PHYSICAL CHANGE IN WELL (SPECIFY) \_\_\_\_\_

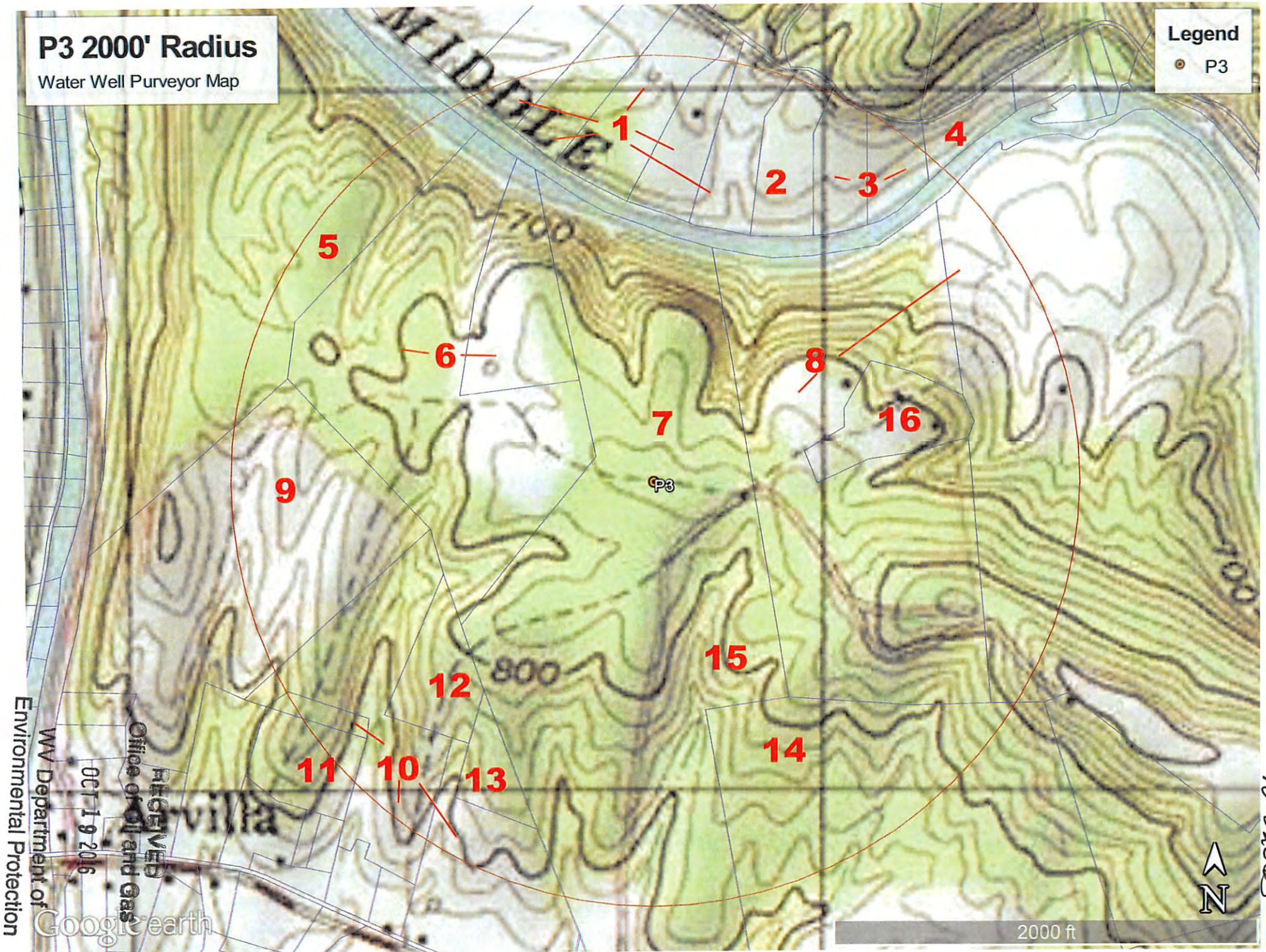
PLUG AND ABANDON \_\_\_\_\_ CLEAN OUT AND REPLUG \_\_\_\_\_  
 TARGET FORMATION Point Pleasant ESTIMATED DEPTH TVD = 10,717'; TMD = 22,378'  
 WELL OPERATOR Jay-Bee Oil & Gas, Inc. DESIGNATED AGENT Randy Broda  
 ADDRESS 1720 Route 22 E, Union, NJ 07083 ADDRESS 3570 Shields Hill Rd., Cairo, WV 26337

# P3 2000' Radius

Water Well Purveyor Map

## Legend

● P3



RESERVED  
Office of Oil and Gas  
OCT 19 2016  
WV Department of  
Environmental Protection  
Google earth

73-02543

2000 ft