

FILE NO. \_\_\_\_\_  
DRAWING NO. 1  
SCALE 1" = 2000'  
MINIMUM DEGREE OF ACCURACY 1 in 200  
PROVEN SOURCE OF ELEVATION GPS  
submeter unit

I THE UNDERSIGNED, HEREBY CERTIFY THAT THIS PLAT IS CORRECT TO THE BEST OF MY KNOWLEDGE AND BELIEF AND SHOWS ALL THE INFORMATION REQUIRED BY LAW AND THE RULES ISSUED AND PRESCRIBED BY THE DEPARTMENT OF ENVIRONMENTAL PROTECTION.

(SIGNED) David L Jackson  
R.P.E. \_\_\_\_\_ P.S. 708



STATE OF WEST VIRGINIA  
Division of Environmental Protection  
OFFICE OF OIL AND GAS

DATE May 5, 2017  
OPERATOR'S WELL NO. P2S5U  
API WELL NO. 47-073-02569 HLA

WELL TYPE: OIL X GAS X LIQUID INJECTION     WASTE DISPOSAL      
(IF "GAS") PRODUCTION X STORAGE     DEEP X SHALLOW    

LOCATION: ELEVATION 712.2' WATER SHED Middle Island Creek  
DISTRICT Union COUNTY Pleasants  
QUADRANGLE Bens Run 7 1/2'

SURFACE OWNER Morgan Valley Farms, Inc. ACREAGE 27.451 Ac.  
OIL & GAS ROYALTY OWNER Morgan Valley Farms, Inc. LEASE ACREAGE 102.777 Ac.  
LEASE NO. P7220

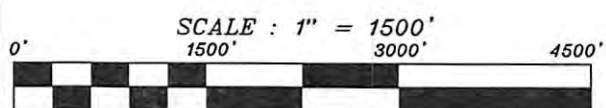
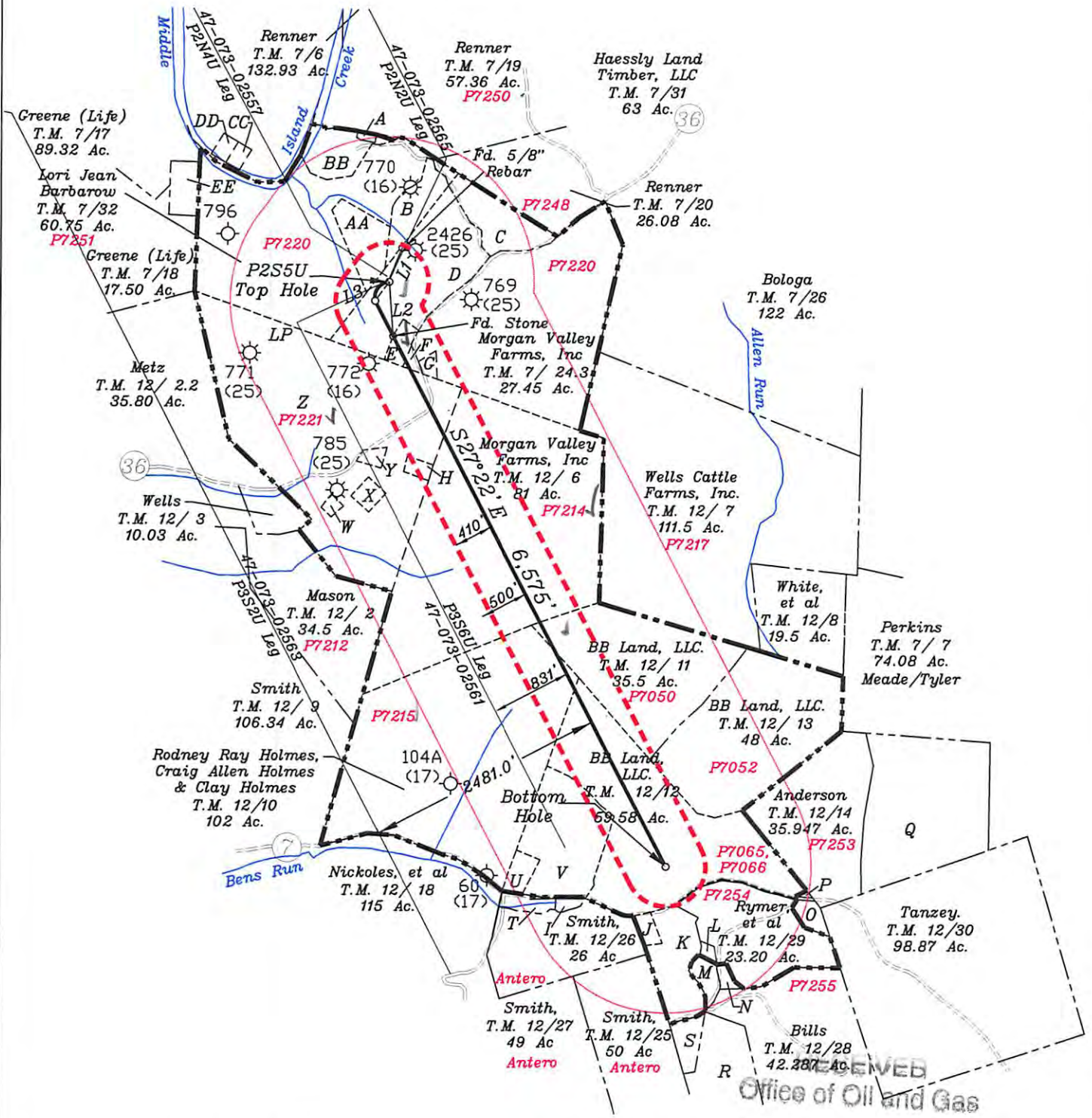
PROPOSED WORK: DRILL X CONVERT     DRILL DEEPER     REDRILL     FRACTURE OR  
STIMULATE X PLUG OFF OLD FORMATION     PERFORATE NEW  
FORMATION X OTHER PHYSICAL CHANGE IN WELL (SPECIFY) \_\_\_\_\_

PLUG AND ABANDON     CLEAN OUT AND REPLUG      
TARGET FORMATION Point Pleasant ESTIMATED DEPTH TVD = 10,590'; TMD = 17,908'  
WELL OPERATOR Jay-Bee Oil & Gas, Inc. DESIGNATED AGENT Randy Broda  
ADDRESS 1720 Route 22 E, Union, NJ 07083 ADDRESS 3570 Shields Hill Rd., Cairo, WV 26337

# EXHIBIT MAP FOR JAY BEE

WELL NO. P2S5U  
Union District, Pleasants County  
March 24, 2017

- A- Renner T.M. 7/32.1 2.5 Ac P7251A
- B- Barbarow T.M. 7/32.2 6.254 Ac. P7251
- C- Morgan T.M. 7/24.2 9.13 Ac P7220
- D- Morgan Valley Farms, Inc.  
T.M. 7/24 27.45 Ac P7220
- E- Beech Run Church & Cemetry  
T.M. 7/24.1 2 Ac. P7220A
- F- Bunner, et al T.M. 7/24.5 0.5 Ac P7220D
- G- Cornell T.M. 7/24.4 0.723 Ac P7220B
- H- Cemetery T.M. 12/35 P7221B
- I- Hall T.M. 12/19.1 1 Ac Antero
- J- Lowther T.M. 12/29.1 1.03 Ac P7254A
- K- Lowther T.M. 12/28.4 11.34 Ac P7254G
- L- Renner, et al T.M.12/29.4 0.578 Ac P7254D
- M- Renner, et al T.M. 12/29.3 2.291 Ac P7254C
- N- Baker T.M. 12/28.3 1.102 Ac P7254F
- O- Templeton T.M. 12/28.2 2.33 Ac P7254E



LEGEND	
	1500' BOREPATH OFFSET
	UNIT BOUNDARY 410' FROM WELL BORE PATH, TH & BH
	FINAL LEASE LINE
	INTERIOR TRACT LINE
	ADJOINER LINE
	ROAD LINE
	STREAM LINE

Jackson Surveying Inc.  
677 W. Main Street  
Clarksburg, WV 26301  
(304) 623-5851

- P- Murphy T.M. 12/29.2 0.177 Ac P7254B
- Q- Hamilton T.M. 12/16 42 Ac
- R- Grove T.M. 12/28.5 21 Ac
- S- Grove T.M. 12/28.1 3.1 Ac
- T- Hileman, et al T.M. 12/19.2 2 Ac Antero
- U- Wise T.M. 12/20 1.83 Ac P7065 & P7068
- V- Street T.M. 12/12.1 17 Ac P7065 & P7068
- W- Miller, et al T.M. 12/4 1.5 Ac P7221
- X- Kaess T.M. 12/39 0.64 Ac P7221A
- Y- Kaess T.M. 12/5 1 Ac P7221
- Z- Kaess T.M. 7/29&30 97.364 Ac P7221
- AA- Wm. Munday T.M. 7/ 32.3 7 Ac P7251B
- BB- Cain T.M. 7/ 32.4 7 Ac P7251C
- CC- Parsons T.M. 7/6.2 1 Ac
- DD- Cain T.M. 7/6.1 1 Ac
- EE- Greene T.M. 7/18.1 1 Ac.

Office of Oil and Gas

WV Department of Environmental Protection

06/23/2017