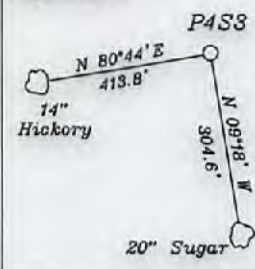


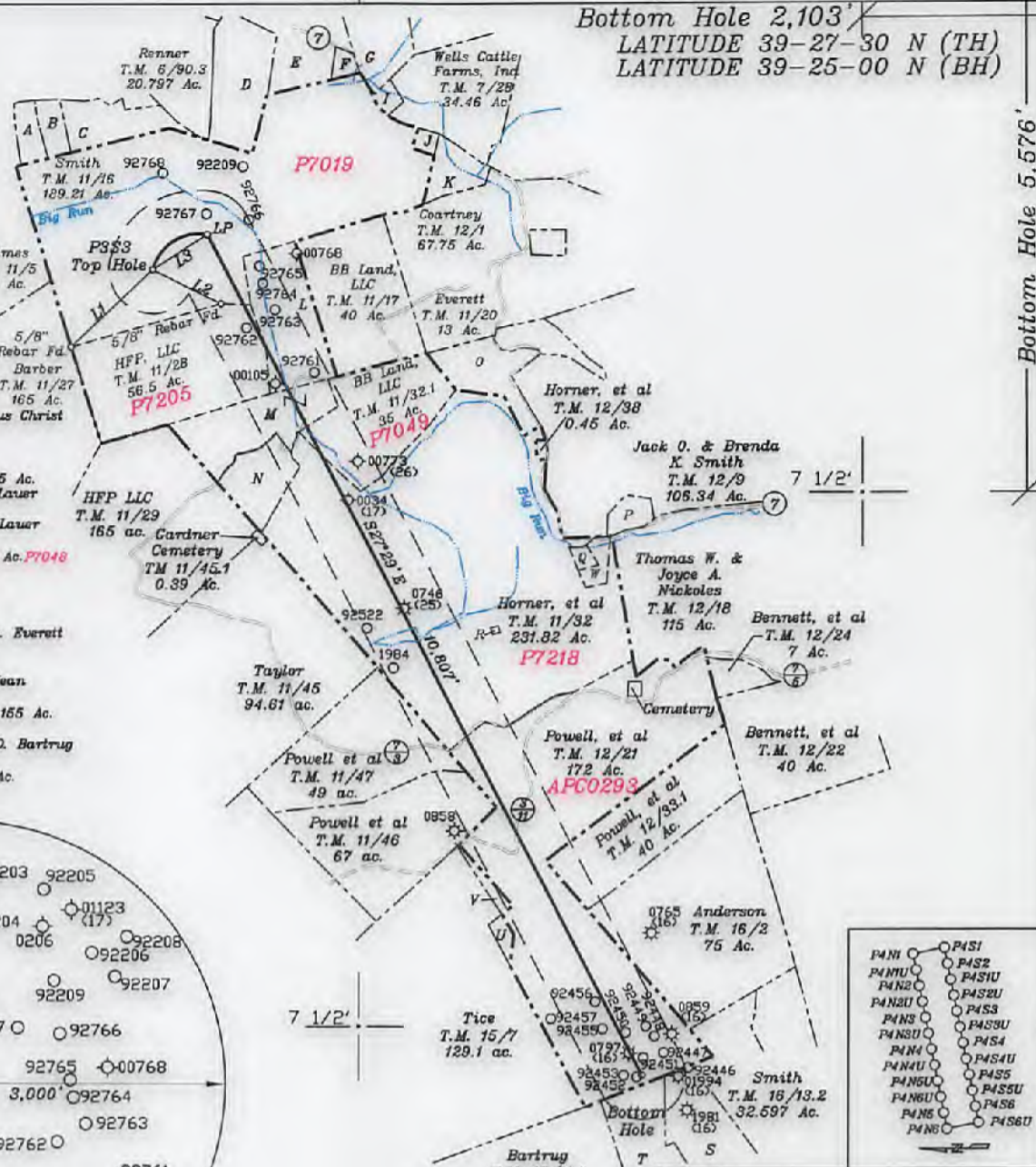
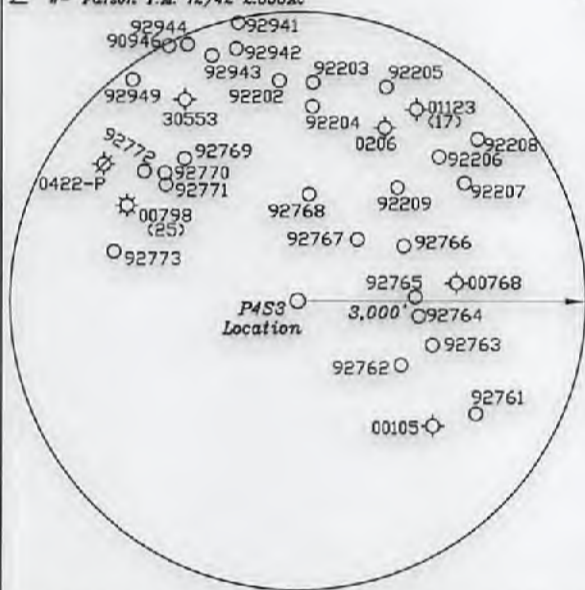
References:



Bottom Hole 2,103'
LATITUDE 39-27-30 N (TH)
LATITUDE 39-25-00 N (BH)

- A- Blake T.M. 11/12 5 Ac.
- B- Bowie T.M. 11/13 3.25 Ac.
- C- Bowie T.M. 11/14 12.855 Ac.
- D- Smith T.M. 6/106 21.46 Ac.
- E- Buzzard T.M. 6/84 10.5 Ac.
- F- Regular Baptist Church of Jesus Christ T.M. 6/109 2 Ac.
- G- Jay Bee Oil and Gas, Inc. T.M. 6/85 27.53 Ac.
- I- Jerry Corrigan T.M. 6/105 2.165 Ac.
- J- Anthony L. Lauer & Devin L. Lauer T.M. 11/16.1 1.5 Ac.
- K- Anthony L. Lauer & Devin L. Lauer T.M. 11/16.2 3.29 Ac.
- L- BB Land LLC T.M. 11/18 26.76 Ac. P7048
- M- Jay Dee Oil and Gas, Inc. T.M. 11/30 25.14 Ac. P7068
- N- Jay Bee Oil and Gas, Inc. T.M. 11/31 13.11 Ac.
- O- William C. Everett & Connie A. Everett T.M. 11/19 14.5 Ac.
- P- Jack Smith T.M. 12/9.1 5 Ac.
- Q- Joseph Carl Farson & Norma Jean Farson T.M. 12/41 1.329 Ac.
- R- Horner Cemetery T.M. 12/40 0.155 Ac.
- S- Bartrug T.M. 16/23 41 Ac.
- T- Mark W. Bartrug & Kimberly D. Bartrug T.M. 16/12 62.18 Ac.
- U- John R. Tice T.M. 16/28 2.7 Ac.
- V- Anderson T.M. 16/29 2.7 Ac.
- W- Farson T.M. 12/42 2.858 Ac.

NORTH



Bottom Hole 5,576'

Top Hole 11,666'

LONGITUDE 81-02-30 W

NUMBER	DIRECTION	DISTANCE
L1	S46°42'W	1,283'
L2	S63°45'E	874'
L3	N57°26'E	747'

Top Hole
Geo NAD 83- 39.426305 N, 81.069556 W
UTM NAD 83(Meters)-4364088.13 N, 494013.37 E
UTM NAD 83(Foot)-14317845.79 N, 1620775.54 E

Landing Point
Geo NAD 83- 39.427438 N, 81.067952 W
UTM NAD 83(Meters)-4364213.78 N, 494203.09 E
UTM NAD 83(Foot)-14318258.03 N, 1621397.95 E

Bottom Hole
Geo NAD 83- 39.401358 N, 81.049110 W
UTM NAD 83(Meters)-4361318.40 N, 495771.65 E
UTM NAD 83(Foot)-14309758.78 N, 1626544.15 E

(+) DENOTES LOCATION OF WELL ON UNITED STATES TOPOGRAPHIC MAPS

FILE NO. _____
DRAWING NO. 1
SCALE 1" = 2000'
MINIMUM DEGREE OF ACCURACY 1 in 200
PROVEN SOURCE OF ELEVATION GPS
submeter unit

I THE UNDERSIGNED, HEREBY CERTIFY THAT THIS PLAT IS CORRECT TO THE BEST OF MY KNOWLEDGE AND BELIEF AND SHOWS ALL THE INFORMATION REQUIRED BY LAW AND THE RULES ISSUED AND PRESCRIBED BY THE DEPARTMENT OF ENVIRONMENTAL PROTECTION.

(SIGNED) David L. Jackson
R.P.E. _____ P.S. 708



STATE OF WEST VIRGINIA
Division of Environmental Protection
OFFICE OF OIL AND GAS

DATE August 25, 2017
OPERATOR'S WELL NO. P433
API WELL NO. _____

WELL TYPE: OIL GAS LIQUID INJECTION X WASTE DISPOSAL _____ STATE 47 COUNTY 073 PERMIT 02573

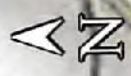
(IF 'GAS') PRODUCTION X STORAGE _____ DEEP _____ SHALLOW X

LOCATION: ELEVATION 957.22' WATER SHED Big Run of Outlet Middle Island Creek (HUC-10)
DISTRICT Union COUNTY Pleasants
QUADRANGLE Bens Run 7 1/2'

SURFACE OWNER John A. Smith & Edith U. Smith ACREAGE 189.21 Ac.
OIL & GAS ROYALTY OWNER John A. Smith & Edith U. Smith LEASE ACREAGE 189.21 Ac.
LEASE NO. P7019

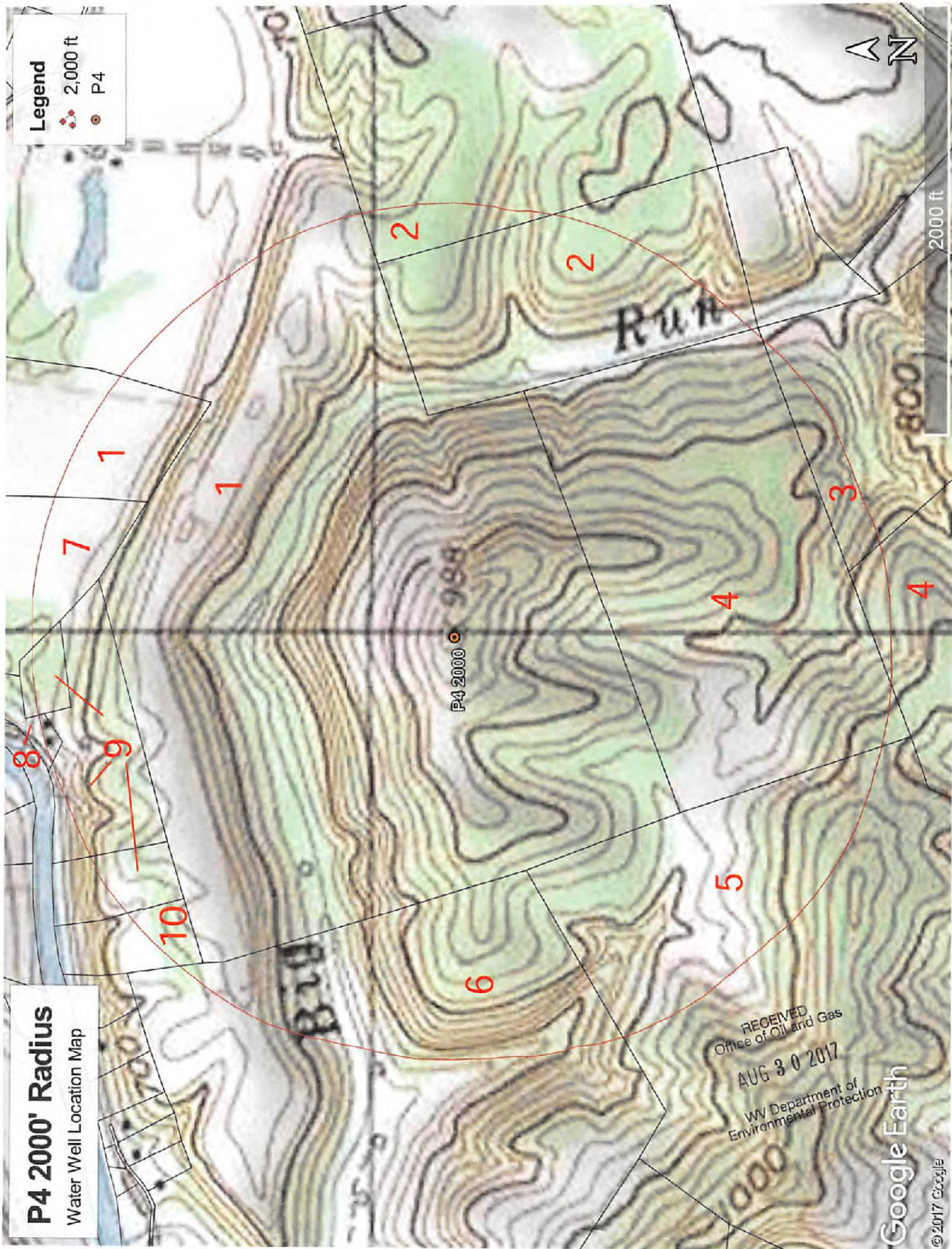
PROPOSED WORK: DRILL X CONVERT _____ DRILL DEEPER _____ REDRILL _____ FRACTURE OR STIMULATE X PLUG OFF OLD FORMATION _____ PERFORATE NEW FORMATION X OTHER PHYSICAL CHANGE IN WELL (SPECIFY) _____

PLUG AND ABANDON _____ CLEAN OUT AND REPLUG _____
TARGET FORMATION Marcellus ESTIMATED DEPTH TVD = 5,995'; TMD = 18,050'
WELL OPERATOR Jay-Bee Oil & Gas, Inc. DESIGNATED AGENT Randy Broda
ADDRESS 1720 Route 22 E, Union, NJ 07083 ADDRESS 3570 Shields Hill Rd., Cairo, WV 26337



Legend

- 2,000 ft
- P4



P4 2000' Radius
Water Well Location Map

P4 2000' 994

RECEIVED
Office of Oil and Gas
AUG 30 2017
WV Department of
Environmental Protection

Google Earth