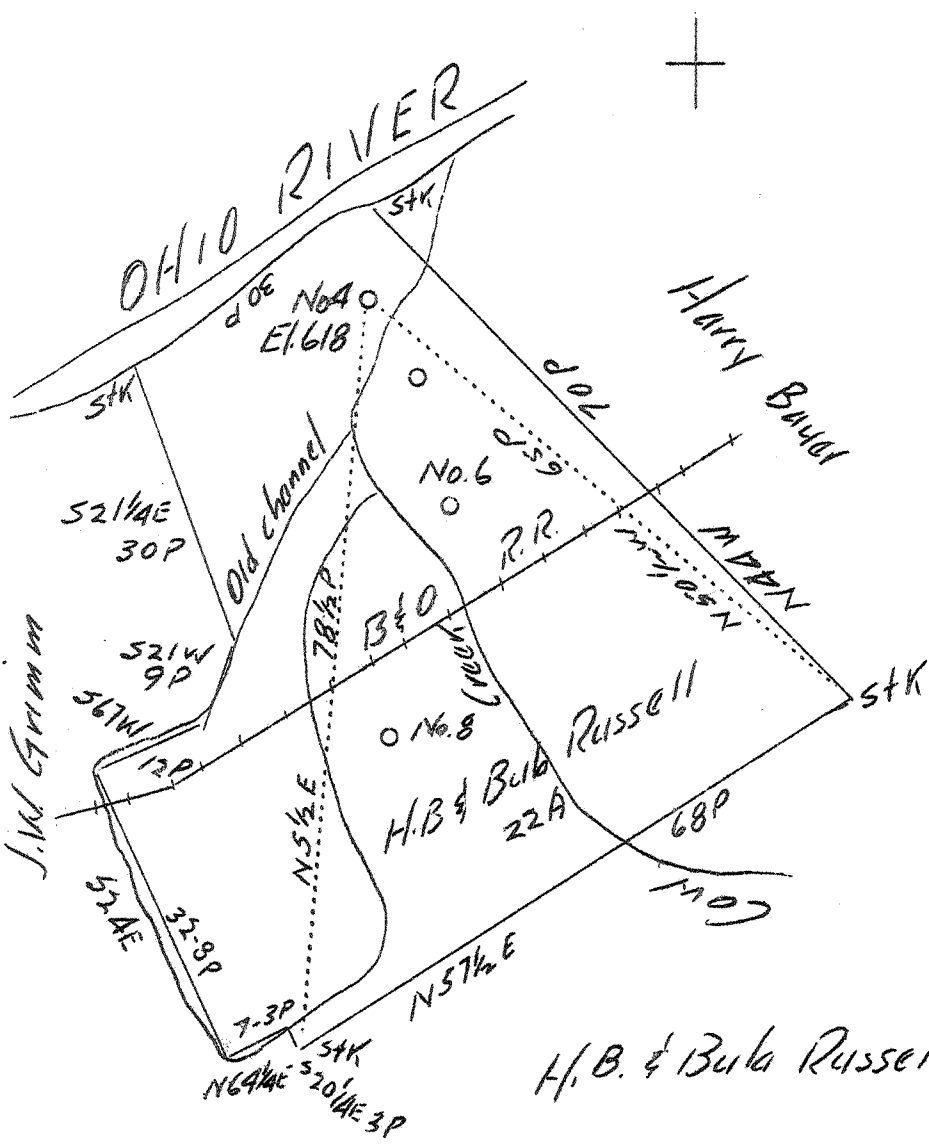


LATITUDE 39° 25'

LONGITUDE 81° 15'



3.83 W
 4.2 R
 Abandonment

Company	H.B. Russell
Address	St. Marys, W.Va.
Farm	H.B. & Bula Russell
Tract	Acres 22 Lease No.
Well (Farm) No.	4 Serial No.
Elevation (Spirit Level)	618'
Quadrangle	Marietta
County	Pleasants District Grant
Engineer	Jno. Triplett
Engineer's Registration No.	
File No.	Drawing No.
Date	June 28, 1937 Scale 1"-20 Feet

STATE OF WEST VIRGINIA
 Department of Mines
 OIL AND GAS DIVISION
 CHARLESTON

WELL LOCATION MAP
 File No. PLEAS-95A

+ Denotes location of well on United States Topographic Maps, scale 1 to 62,500, latitude and longitude lines being represented by border lines as shown.

— Denotes one inch spaces on border line of original tracing.