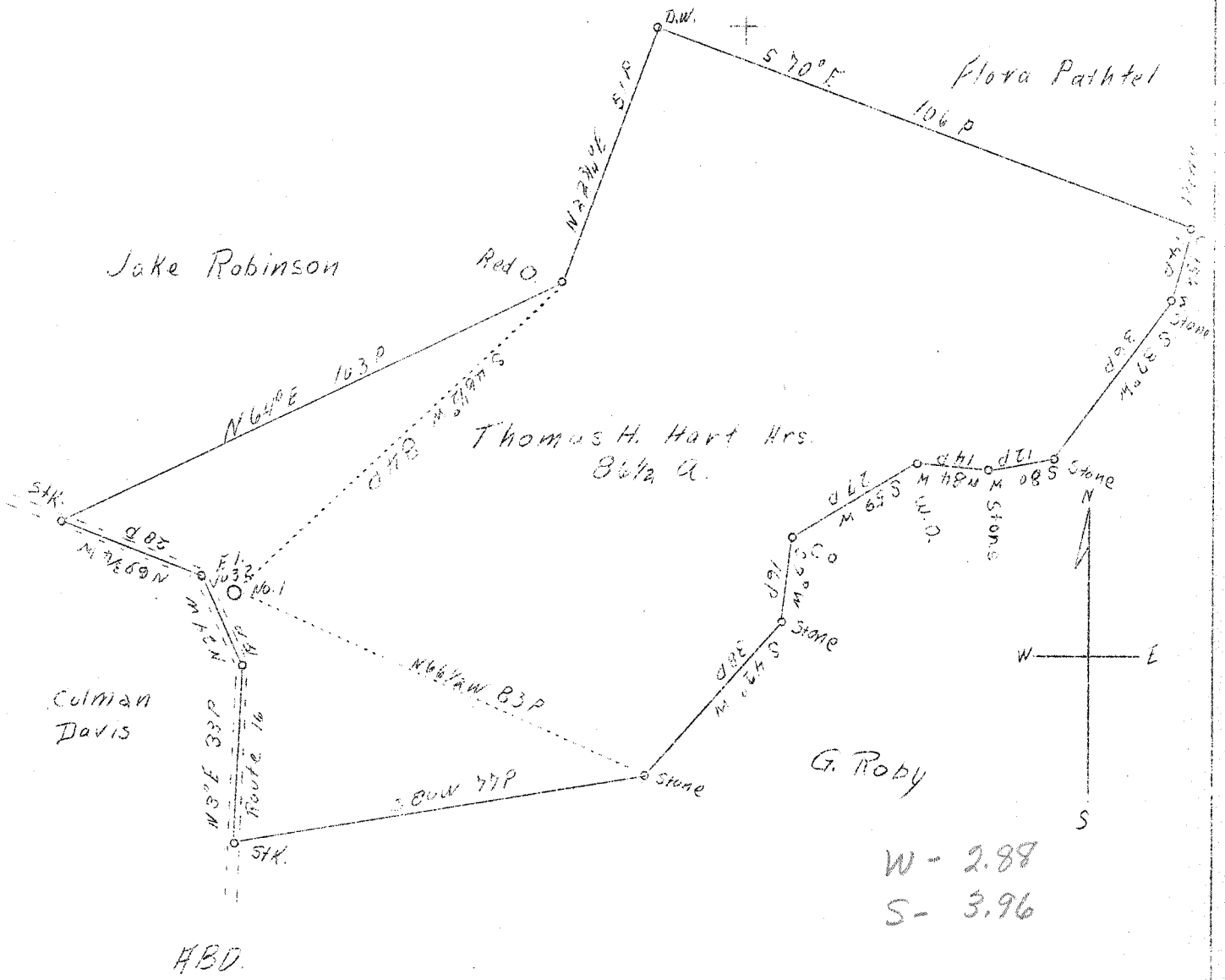


LATITUDE 39° 25'

LONGITUDE 81° 05'



Company Bettie Wate Oil Co.
 Address St. Marys, W. Va.
 Farm Thomas H. Hart Hrs.
 Acres 86-1/2
 Well (Farm) No. One
 Elevation (SP) 1032'
 Quadrangle St. Marys
 County Pleasants
 District McKim
 Engineer John Triplett
 Eng. Reg. No. 2
 Date Sept. 15, 1938
 Scale 30 p. - 1"

STATE OF WEST VIRGINIA
 Department of Mines
 OIL & GAS DIVISION
 Charleston

WELL LOCATION MAP
 File No. Pleasants-112-4

x Denotes location of well on U. S. Topographic Maps, scale 1 to 62,500, latitude and longitude lines being represented by border lines as shown.
 - Denotes one inch spaces on border line of original tracing.