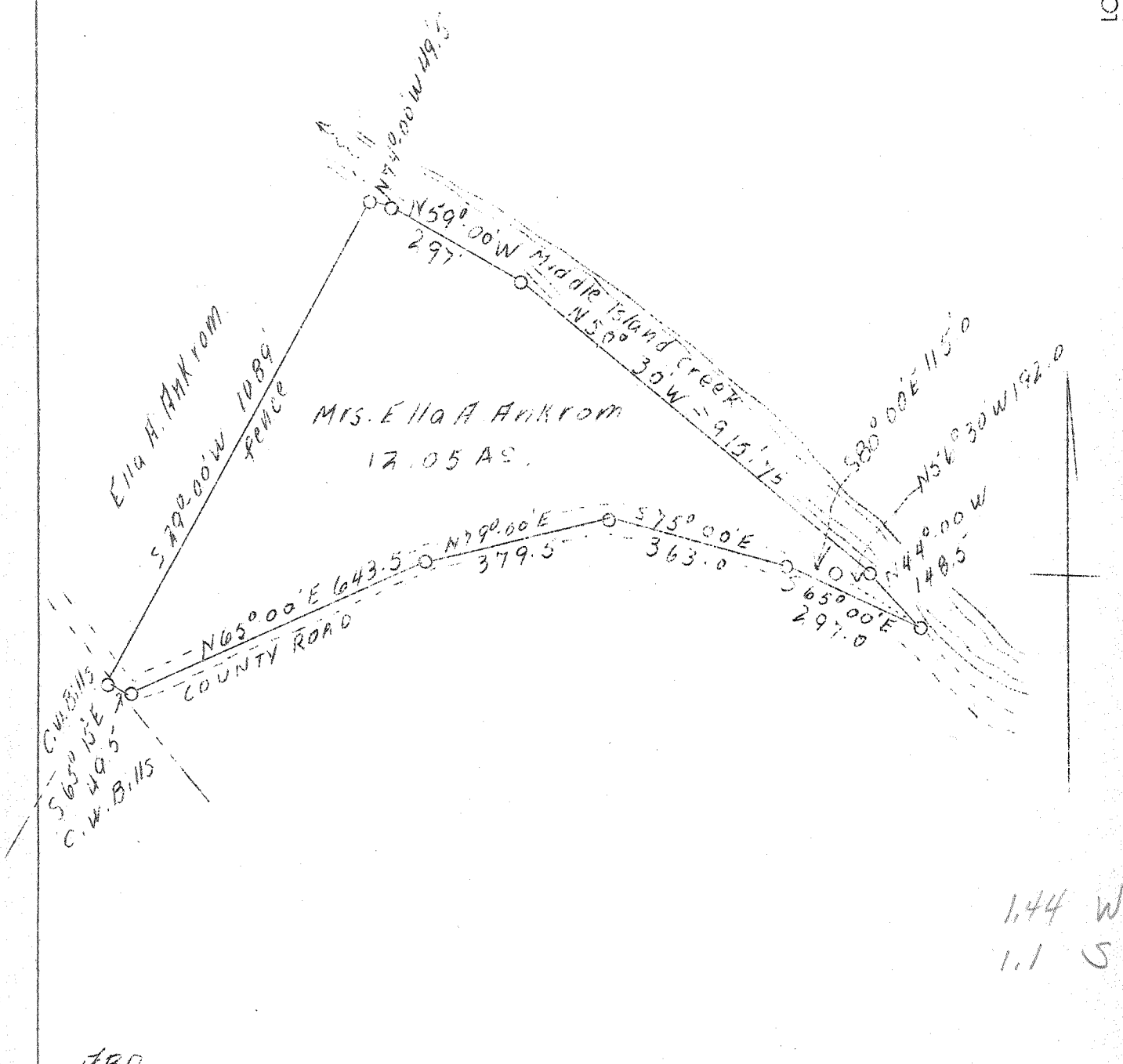


LATITUDE 39° 25'

LONGITUDE 81° 10'



ABD.

Company	C. E. Cokeley
Address	Waverly, W. Va.
Farm	Mrs. Ella A. Ankrom
Acres	12.05
Well (Farm) No.	One
Elevation (SL)	612.7 feet
Quadrangle	St. Marys
County	Pleasants
District	Washington
Engineer	George R. Clarke
Eng. Reg. No.	102
Date	March 14, 1939 (?)
Scale	1" - 300'

STATE OF WEST VIRGINIA  
 Department of Mines  
 OIL & GAS DIVISION  
 Charleston

WELL LOCATION MAP

File No. Plea-171-A

x Denotes location of well on U. S. Topographic Maps, scale 1 to 62,500, latitude and longitude lines being represented by border lines as shown.

- Denotes one inch spaces on border line of original tracing.