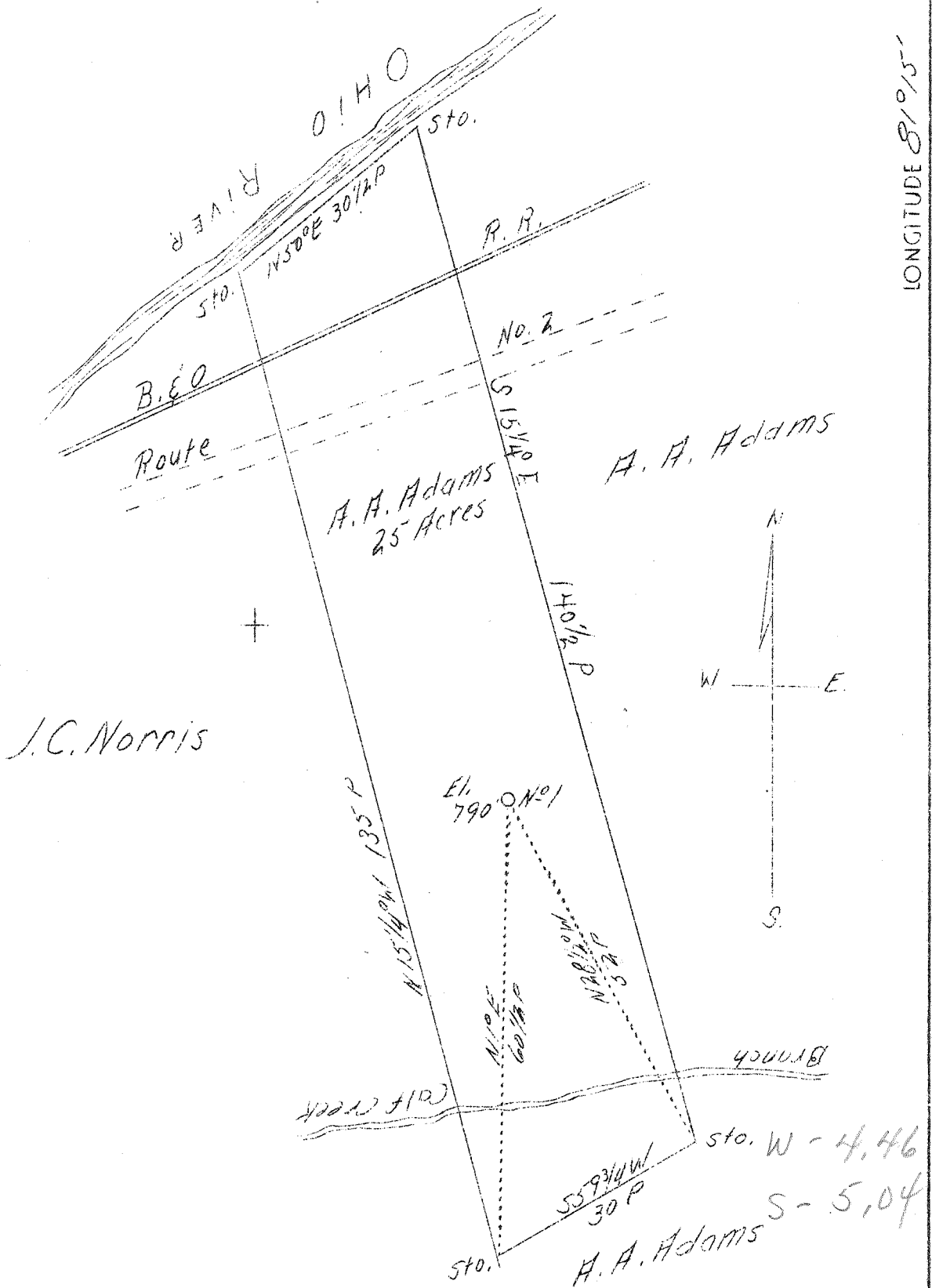


LATITUDE 39°25'

LONGITUDE 81°05'



ABD.

Company	A. A. Adams
Address	St. Marys, W. Va. (R#4)
Farm	A. A. Adams
Acres	25
Well (Farm) No.	1
Elevation (SL)	790
Quadrangle	Marietta E.
County	Pleasants
District	Grant
Engineer	John Triplett
Eng. Reg. No.	-
Date	July 6, 1939
Scale	20 poles - 1"

STATE OF WEST VIRGINIA
 Department of Mines
 OIL & GAS DIVISION
 Charleston

WELL LOCATION MAP

File No. P1025-143-A

x Denotes location of well on U. S. Topographic Maps, scale 1 to 62,500, latitude and longitude lines being represented by border lines as shown.

- Denotes one inch spaces on border line of original tracing.