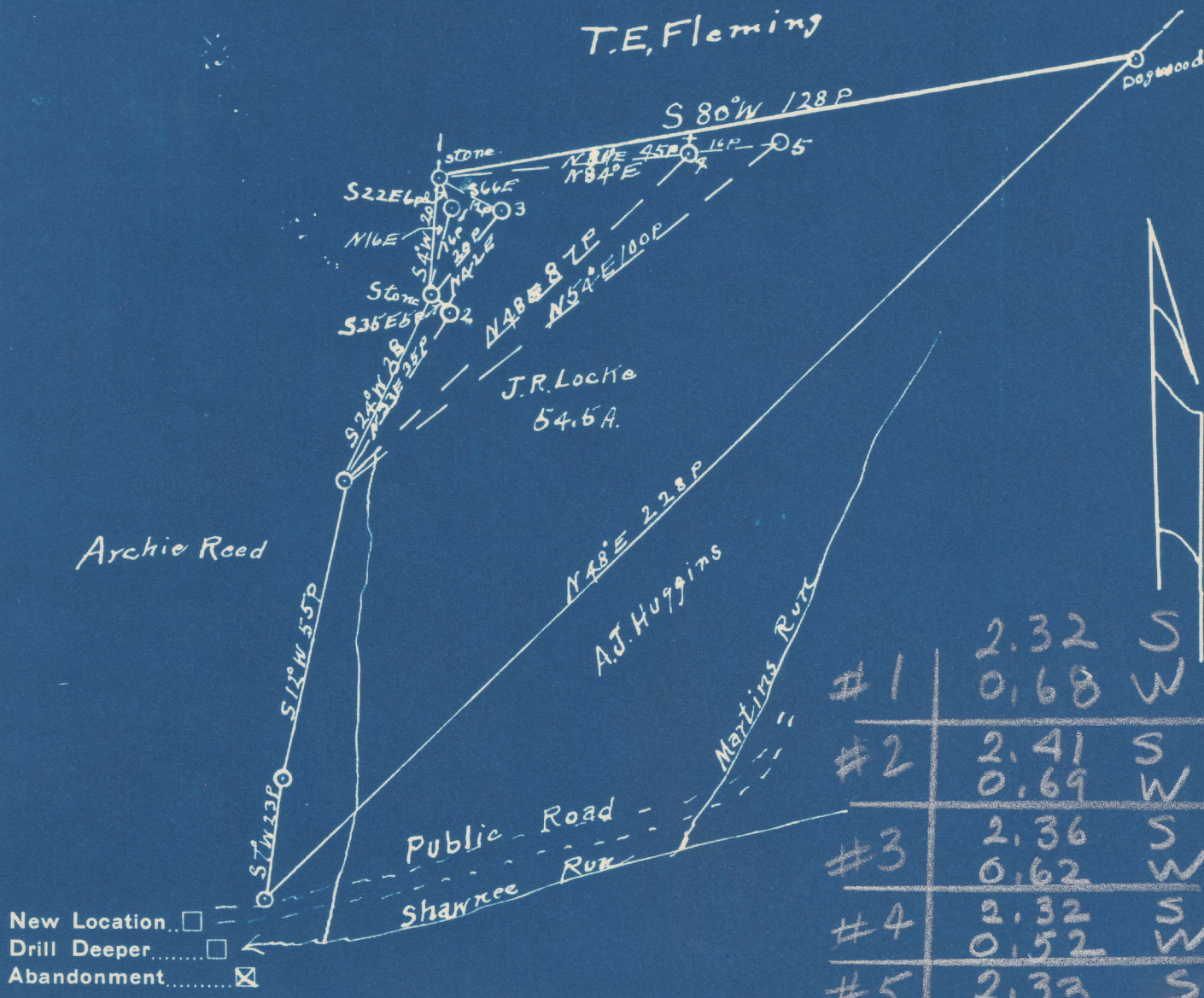


0 1 2 3

Latitude 39 ° 25 '

1
2
3

Longitude 81 ° 05 '



#1	2.32	S
	0.68	W
#2	2.41	S
	0.69	W
#3	2.36	S
	0.62	W
#4	2.32	S
	0.52	W
#5	2.33	S
	0.43	W

Company Piersol, Smith & Cobb
 Address RED No 2, Walker WVA
 Farm J.R. Locke
 Tract _____ Acres 54 1/2 A Lease No. _____
 Well (Farm) No. 1, 3, 4, 5 Serial No. _____
 Elevation (Spirit Level) 636 - 700 - 715 - 723 - 810
 Quadrangle St Marys
 County Pleasants District Lafayette
 Engineer J.E. Anderson
 Engineer's Registration No. Wood Co. Surveyor
 File No. _____ Drawing No. _____
 Date Jan. 6, 1942 Scale 1 in = 30 Poles

STATE OF WEST VIRGINIA
 DEPARTMENT OF MINES
 OIL AND GAS DIVISION
 CHARLESTON

WELL LOCATION MAP

FILE NO. Pleas-184-Well #1
Pleas-185-Well #2
Pleas-186-Well #3 } A

+ Denotes location of well on United States Topographic Maps, scale 1 to 62,500, latitude and longitude lines being represented by border lines as shown.

- Denotes one inch spaces on border line of original tracing.