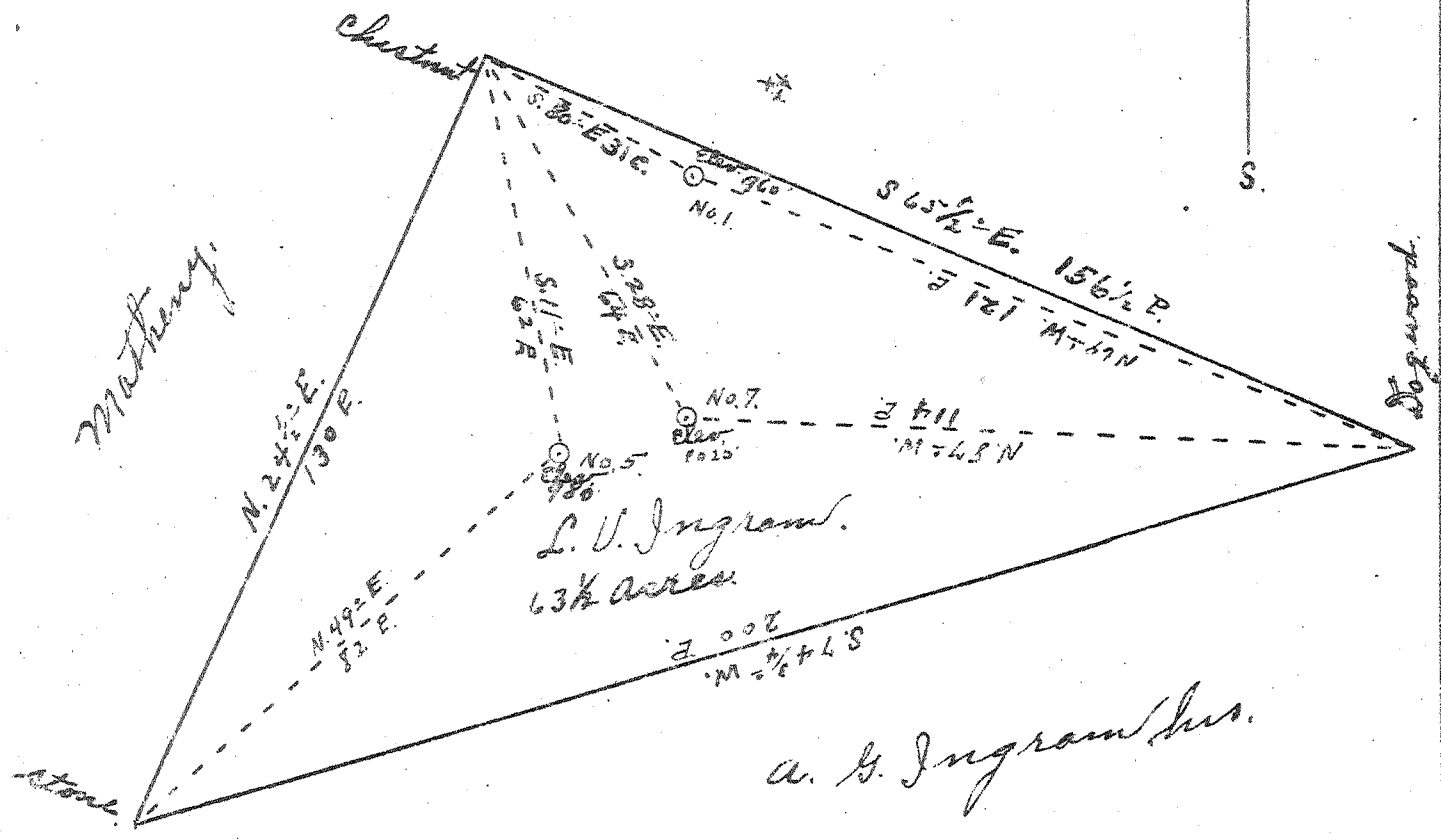
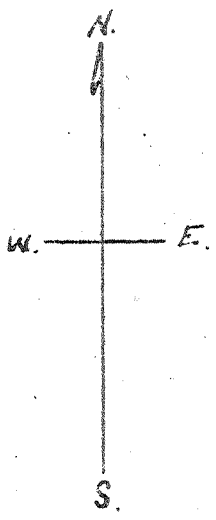


J. A. B. Ingram



New Location   
Dull Deeper   
Abandonment

Company	S. B. Glenn
Address	St. Marys, WVa.
Farm	L. V. Ingram
Tract	Acres 63 1/2 Lease No.
Well (Farm) No.	4, 5, & 7 Serial No.
Elevation (Spirit Level)	No. 1. 960' No. 5. 985' No. 7. 1020'
Quadrangle	St. Marys, WVa.
County	Pleasants District Jefferson
Engineer	Jno Triplett
Engineer's Registration No.	
File No.	Drawing No.
Date	May 6 1947 Scale 1" = 30 P.

STATE OF WEST VIRGINIA  
DEPARTMENT OF MINES  
OIL AND GAS DIVISION  
CHARLESTON

WELL LOCATION MAP

FILE NO. Pleas - 216-A  
 #1 - Pleas - 217-A #57  
 #2 - Pleas - 218-A #57

+ Denotes location of well on United States Topographic Maps, scale 1 to 62,500, latitude and longitude lines being represented by border lines as shown.

- Denotes one inch spaces on border line of original tracing.