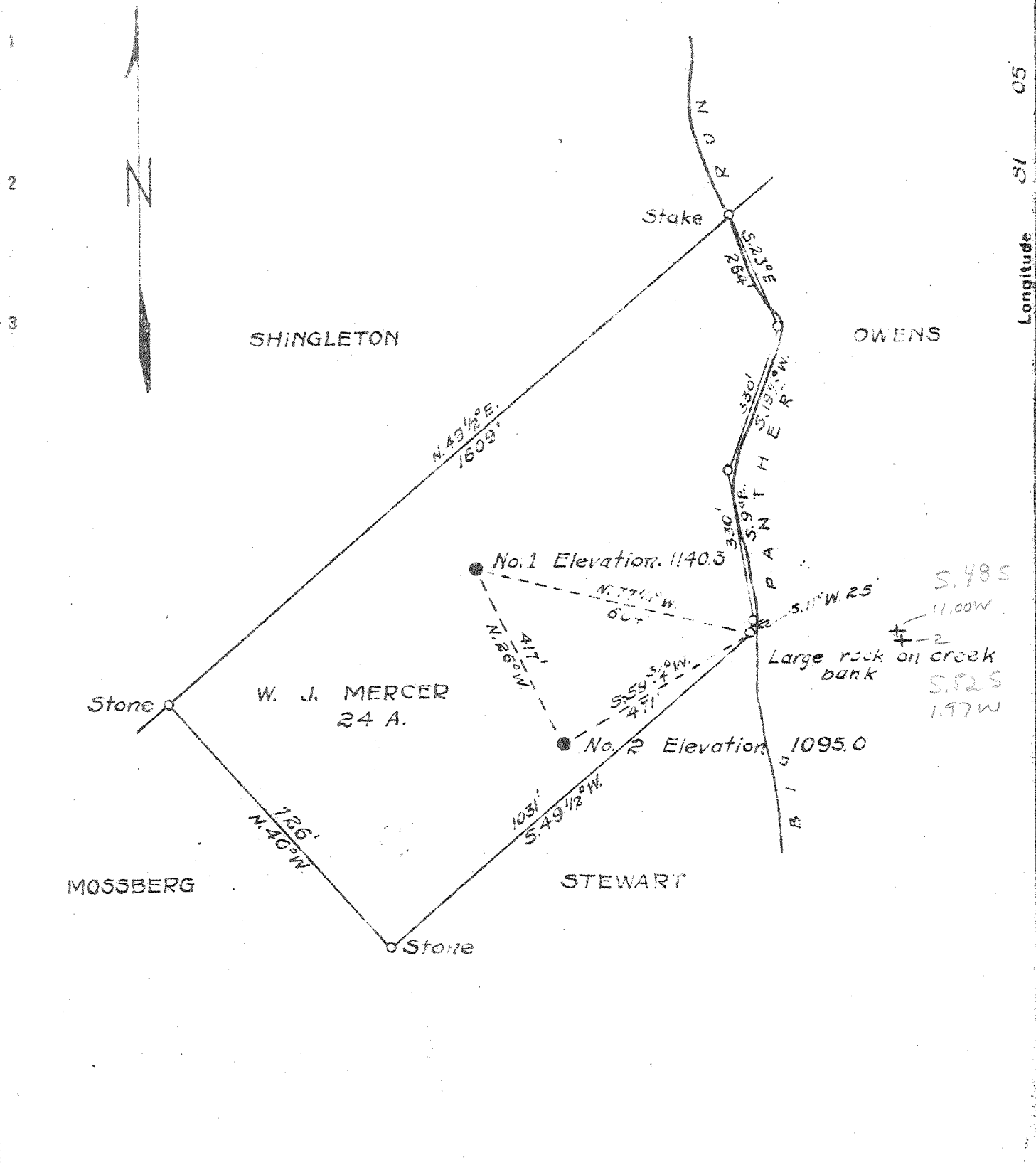


Latitude 39 25



New Location
 Drill Deeper
 Abandonment

Company	HANLON OIL CO.
Address	SISTERSVILLE, W. VA.
Farm	W. J. MERCER
Tract	Acres 24 Lease No.
Well (Farm) No.	1 & 2 Serial No.
Elevation (Spirit Level)	1140.3 & 1095.0
Quadrangle	SAINT MARYS
County	PLEASANTS District MEKIM
Engineer	B. F. RINEHART
Engineer's Registration No.	648
File No.	Drawing No. 663-MP
Date	Mar. 2, 1948 Scale 1 in. = 300 ft.

STATE OF WEST VIRGINIA
 DEPARTMENT OF MINES
 OIL AND GAS DIVISION
 CHARLESTON

WELL LOCATION MAP
 FILE NO. PLEAS-224-A-#1
 PLEAS-225-A-#2

+ Denotes location of well on United States Topographic Maps, scale 1 to 62,500, latitude and longitude lines being represented by border lines as shown
 - Denotes one inch spaces on border line of original tracing

Wells District, Blount County, W. Va.
 By Hanlon Oil Co., Clarksburg, W. Va.
 Abandoned under permit Class 27-A.
 in 24 acres.

Elevation, 1140.5' L.

Surface and minerals owned by W. J. Hancock, St. Marys, W. Va.
 Drilling completed Feb. 1914. Shot with 40 lbs., 1810-1812'.
 10' casing, 180'; 8", 180'; 6", 185'; all left in.
 Oil well. Abandonment reported to Dept. of Mines March 5, 1948.
 Record to 200 from Mrs. Griffith April 8, 1948. Old file No. 117.

	Top.	Bottom.
Line	1800	-----
Kenners Sand (gas, 1801') (oil, 1812')	1840	- 1841
Total Depth		1841