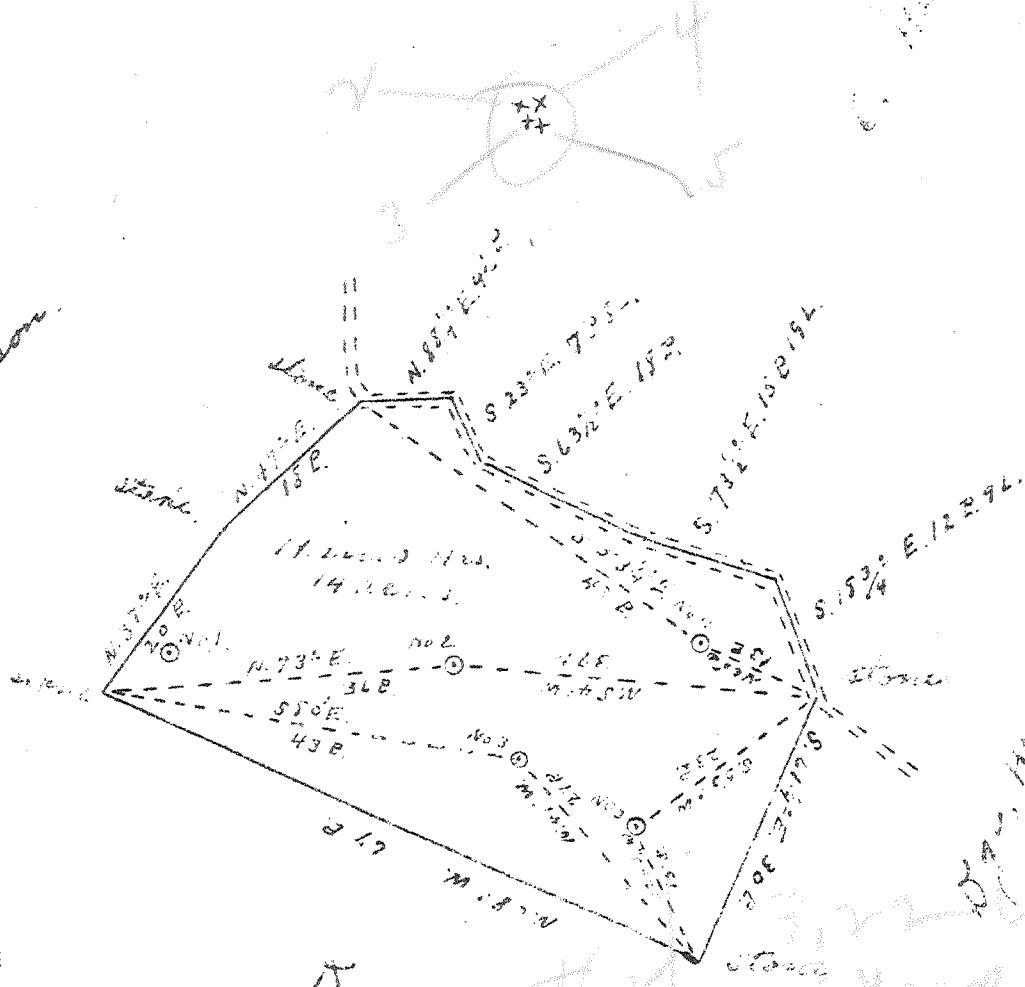


Latitude 3 25

Longitude 51 10

W.C. Patterson



Dye, Mrs.

JUL 26 1948

New Location
Drill Deeper
Abandonment X

Company G. A. Clovis
 Address St. Marys
 Farm Hines Mrs.
 Tract _____ Acres 14 Lease No. _____
 Well (Farm) No. 2, 3, 4, 5 Serial No. _____
 Elevation (Spirit Level) No. 2, 960' No. 3 520' No. 4 30' No. 5 900'
 Quadrangle St. Marys
 County Pleasants District Washington
 Engineer Jno. Triplett
 Engineer's Registration No. _____
 File No. _____ Drawing No. _____
 Date May 20 1948 Scale 1" = 20 P.

STATE OF WEST VIRGINIA
 DEPARTMENT OF MINES
 OIL AND GAS DIVISION
 CHARLESTON

WELL LOCATION MAP
 PLEAS-235-A-#2
 FILE NO. PLEAS-236-A-#3
 PLEAS-237-A-#4
 PLEAS-238-A-#5

+ Denotes location of well on United States Topographic Maps, scale 1 to 62,500, latitude and longitude lines being represented by border lines as shown.
 - Denotes one inch spaces on border line of original tracing.

HINER HRS. NOS. 2, 3, A, & 5 - G. A. CLOVIS - PLEAS-235-6-78-A