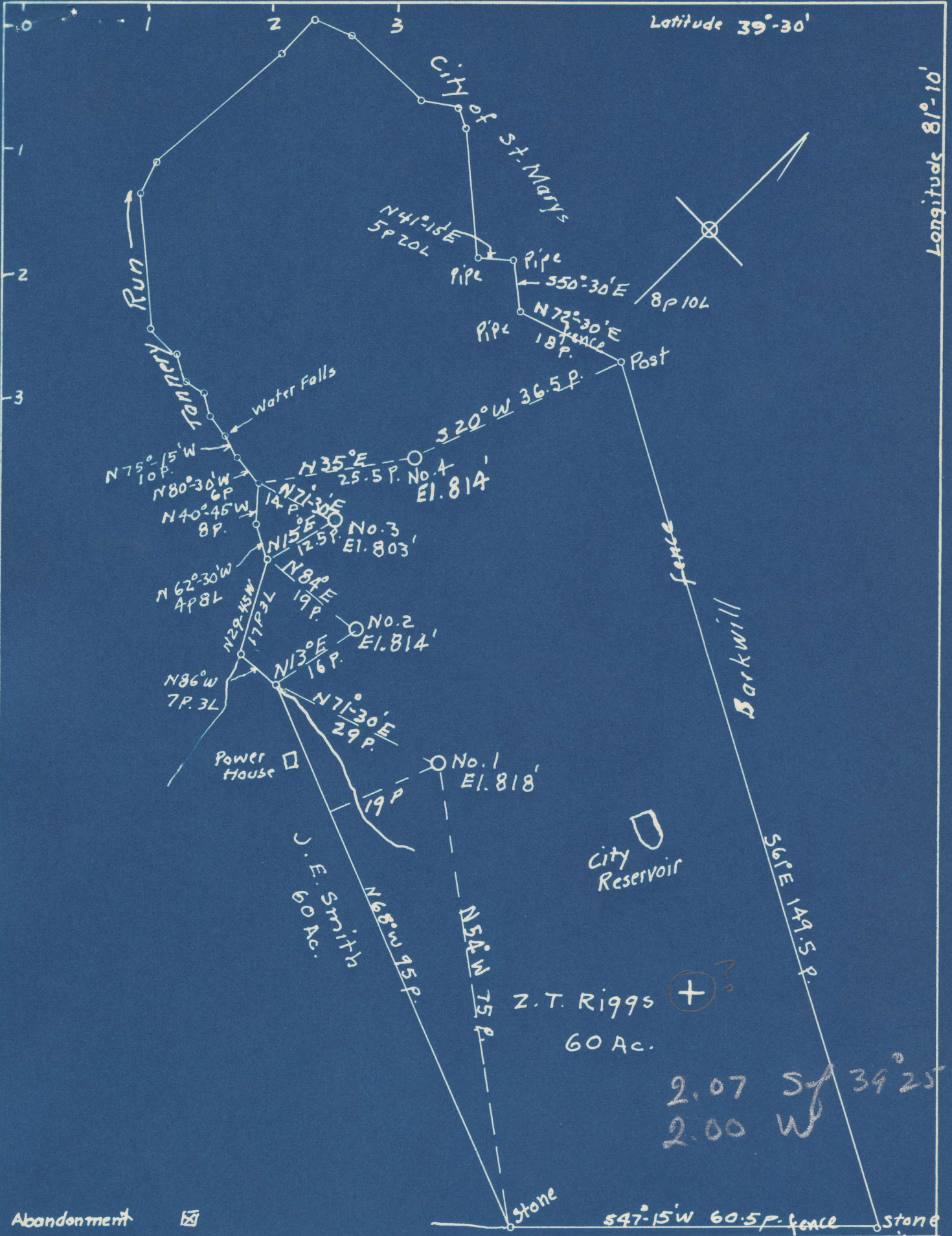


Latitude 39°-30'

Longitude 81°-10'



Abandonment

COMPANY Dinsmoor & Company  
 ADDRESS St Marys W. Va  
 FARM Z.T. Riggs  
 TRACT ACRES 60 LEASE NO  
 WELL (FARM) No 1, 2, 3, 4 SERIAL NO  
 ELEVATION: 1 = 818'; 2 = 814'; 3 = 803'; 4 = 814'  
 QUADRANGLE St Marys  
 COUNTY Pleasants DISTRICT Washington  
 ENGINEER George R. Clarke  
 ENGINEERS REGISTRATION NO. 102  
 FILE NO DRAWING NO  
 DATE 8-28-48 SCALE 1" = 20 Poles

NC

WELL ABANDONMENT MAP  
 PLEAS-254-A-#1  
 PLEAS-255-A-#2  
 PLEAS-256-A-#3  
 PLEAS-257-A-#4

Z. T. RIGGS NO. 2 WELL.

255A

Washington District, Pleasants County, W. Va.

By Dinemoor & Co., St. Marys, W. Va.

Abandoned under permit Pleas-.....-A7

On 60 acres.

Elevation, 814' L.

Minerals owned by Dinemoor & Co., St. Marys, W. Va.

Drilling completed in 1910.

6 $\frac{1}{2}$ " casing, 9 $\frac{1}{8}$ '.

Oil well. Abandonment reported to Dept. of Mines Sept. 15, 1948.

Record to RGT from Mrs. Griffith Jan. 22, 1949. Old File No. 134.

	Top.	Bottom.
Cow Run Sand	793	805
Salt Sand	953	1043
Total depth		1043



STATE OF WEST VIRGINIA  
DEPARTMENT OF MINES  
OIL AND GAS DIVISION

134

WELL RECORD

Permit No. Ab 255-A Oil or Gas Well X (KIND)

Company Dinsmoor & Company  
 Address St. Marys, W. Va.  
 Farm Z.T. Riggs Acres 60  
 Location (waters) \_\_\_\_\_  
 Well No. \_\_\_\_\_ Elev. 814  
 District Washington County Pleasants  
 The surface of tract is owned in fee by \_\_\_\_\_  
 Address \_\_\_\_\_  
 Mineral rights are owned by Dinsmoor & Company  
 Address St. Marys, W. Va.  
 Drilling commenced \_\_\_\_\_  
 Drilling completed 1910  
 Date Shot \_\_\_\_\_ From \_\_\_\_\_ To \_\_\_\_\_  
 With \_\_\_\_\_  
 Open Flow \_\_\_\_\_ /10ths Water in \_\_\_\_\_ Inch  
 \_\_\_\_\_ /10ths Merc. in \_\_\_\_\_ Inch  
 Volume \_\_\_\_\_ Cu. Ft.  
 Rock Pressure \_\_\_\_\_ lbs. \_\_\_\_\_ hrs.  
 Oil \_\_\_\_\_ bbls., 1st 24 hrs.  
 Fresh water \_\_\_\_\_ feet \_\_\_\_\_ feet  
 Salt water \_\_\_\_\_ feet \_\_\_\_\_ feet

Casing and Tubing	Used in Drilling	Left in Well	Packers
Size			Kind of Packer
16			
13			
10			Size of
8 1/4			
6 5/8		948	Depth set
5 3/16			
3			Perf. top
2			Perf. bottom
Liners Used			Perf. top
			Perf. bottom

CASING CEMENTED	SIZE	No. Ft.	Date
COAL WAS ENCOUNTERED AT			
		FEET	INCHES
	FEET	INCHES	FEET
	FEET	INCHES	FEET
	FEET	INCHES	FEET

Formation	Color	Hard or Soft	Top	Bottom	Oil, Gas or Water	Depth Found	Remarks
Cow Run			793	805			
Salt Sand			953	1043			
Total Depth				1043			



Formation	Color	Hard or Soft	Top	Bottom	Oil, Gas or Water	Depth Found	Remarks

Formation	Color	Hard or Soft	Top	Bottom	Oil, Gas or Water	Depth Found	Remarks
Soft water							
Clear water							
Oil							
Rock fragments							

DEPARTMENT OF MINES  
STATE OF WEST VIRGINIA

Date September 15, 19 48

APPROVED DINSMOOR & COMPANY, Owner  
By Edward Wash Asst. Secy.  
(Title)

