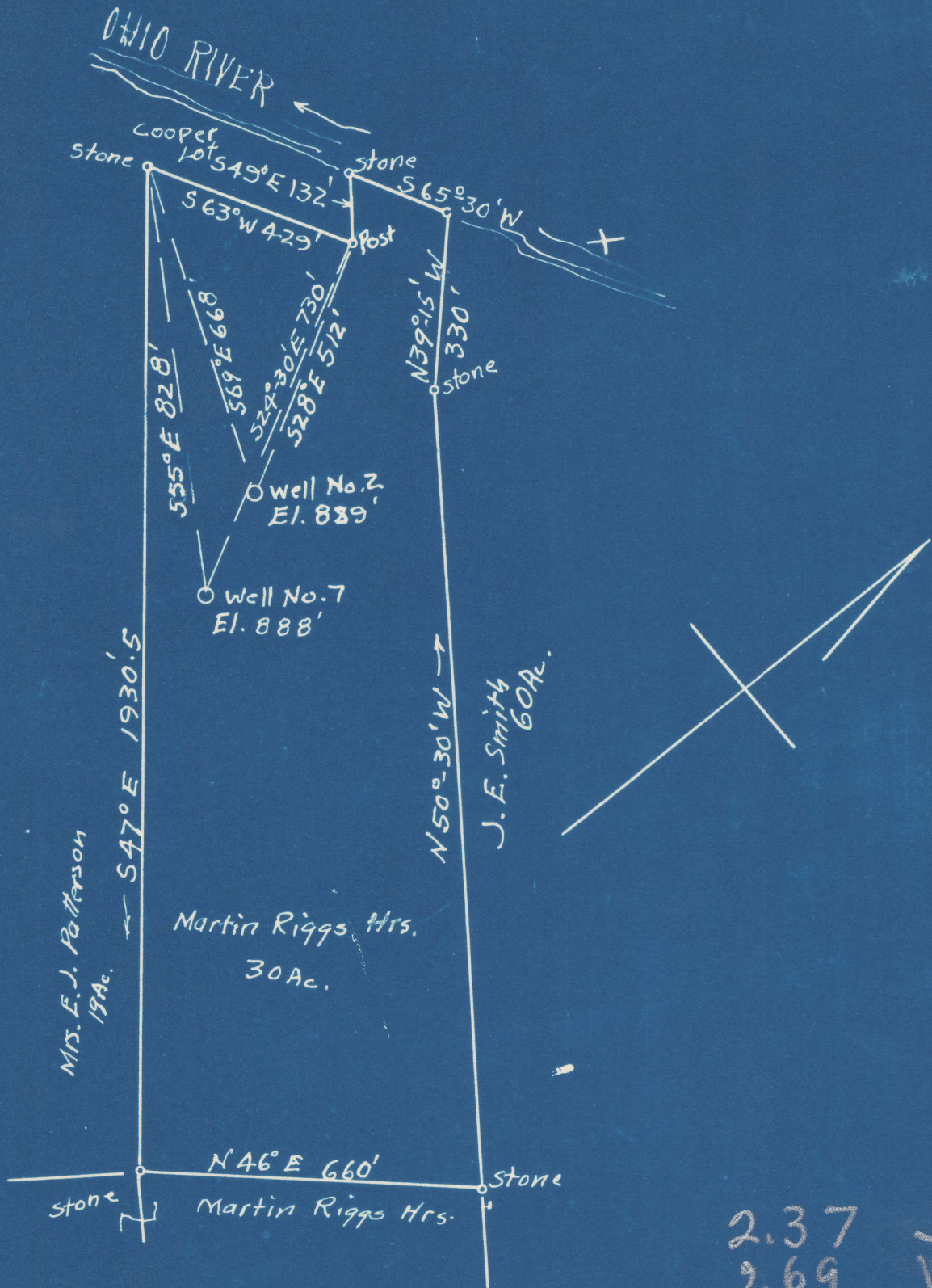


Latitude 39°-25'

Longitude 81°-10'



2.37 S
2.69 W

Abandonment

COMPANY: Dinsmoor & Co.
 ADDRESS: St. Marys, W. Va.
 FARM: Martin Riggs Heirs
 TRACT: ACRES; 30 LEASE NO. WC
 WELL NO. 2 & 7 SERIAL NO.
 ELEVATION; No. 2=889'; No. 7=888'
 QUADRANGLE St Marys
 COUNTY: Pleasants DISTRICT; Washington
 ENGINEER: George R. Clarke
 ENGINEER'S REGISTRATION NO. 102
 FILE NO. DRAWING NO.
 DATE: Nov. 1-1948 SCALE: 1" = 300'

WELL ABANDONMENT MAP
 PLEAS-274-A-#2
 PLEAS-275-A-#7