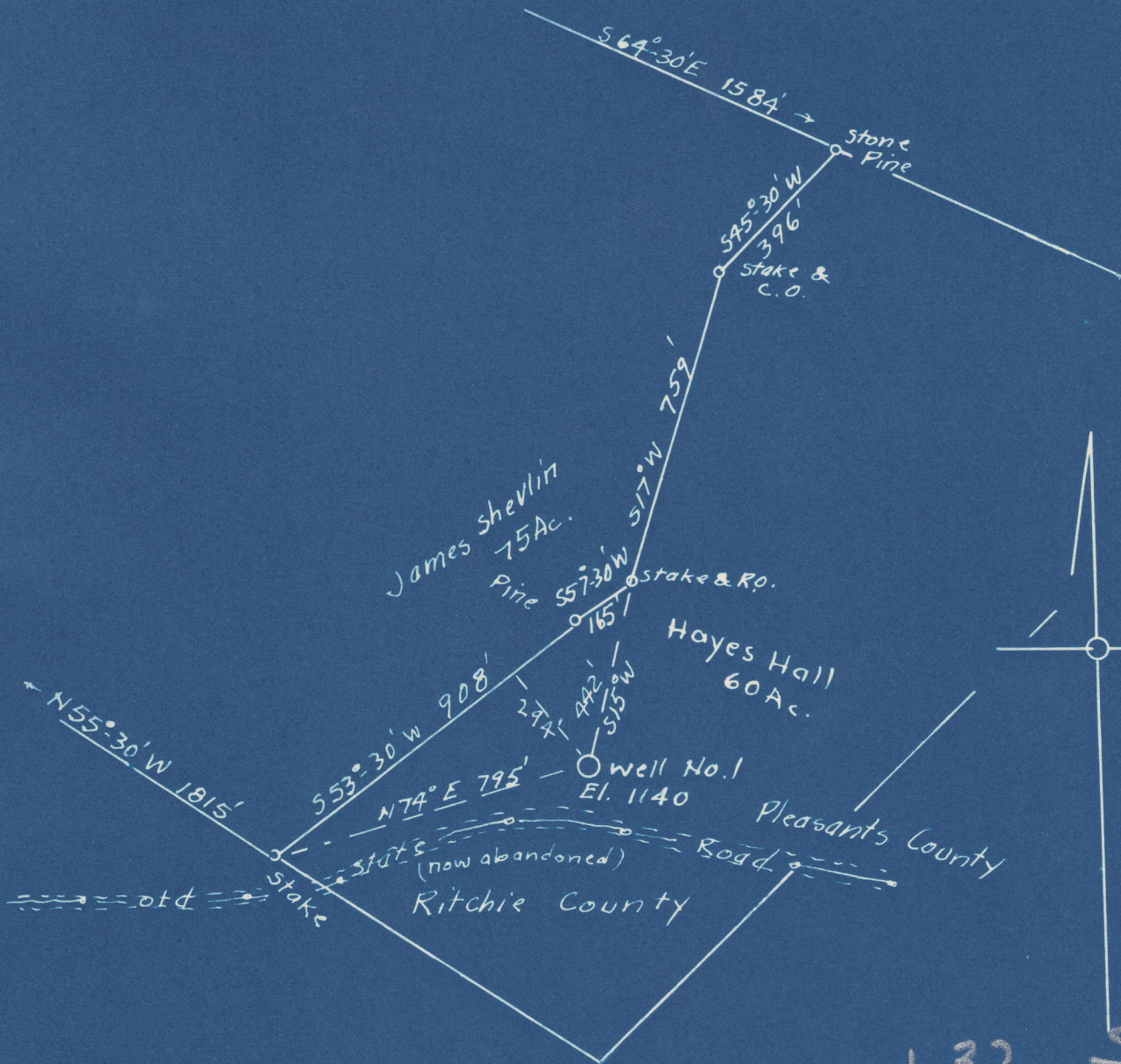


Latitude 39°-20'

Longitude 81°-10'



1.32 S  
1.27 W

Abandonment ☒

COMPANY: Dinsiroot & Co.  
 ADDRESS: St. Marys, W. Va.  
 FARM: Hayes Hall  
 TRACT: ACRES: 60 LEASE NO.  
 WELL NO. 1 SERIAL NO.  
 ELEVATION: 1140'  
 QUADRANGLE: St Marys  
 COUNTY: Pleasants DISTRICT: Lafayette  
 ENGINEER: George R. Colanke  
 ENGINEER'S NO. 102  
 FILE NO. DRAWING NO.  
 DATE: Nov. 10, 1948 SCALE: 1" = 400'

SW

ABANDONMENT MAP  
PLEAS-285-A