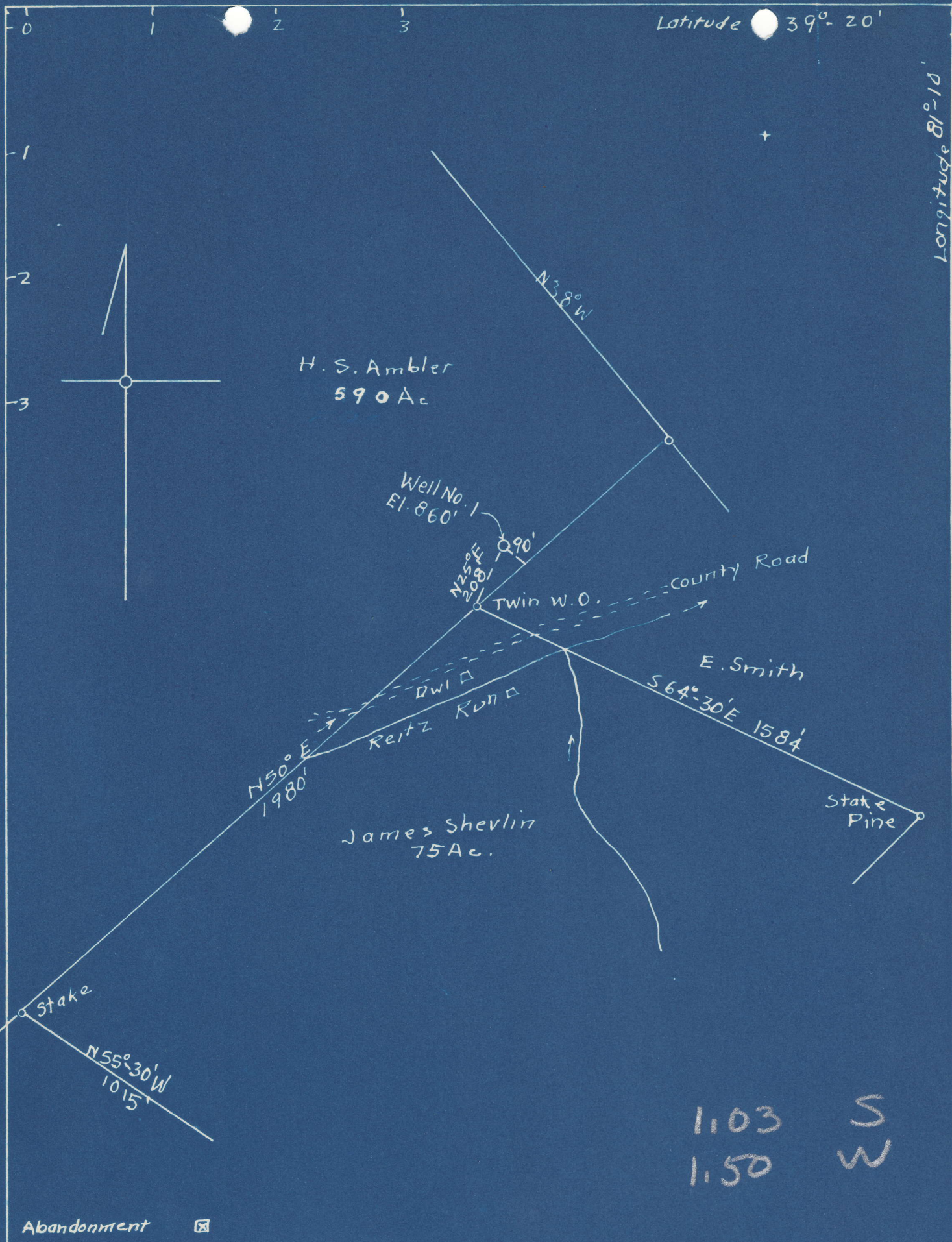


Latitude 39°-20'

Longitude 81°-10'



1.03 S
1.50 W

Abandonment

COMPANY: Dingsmool & Co
 ADDRESS: St. Marys, W. Va.
 FARM: H.S. Ambler
 TRACT: ACRES: 460 LEASE NO.
 WELL NO. 1 SERIAL NO. SW
 ELEVATION: 860
 QUADRANGLE: St. Marys
 COUNTY: Pleasants DISTRICT: Laffayette
 ENGINEER: George R. Clarke
 ENGINEER'S NO. 102
 FILE NO. DRAWING NO.
 DATE: NOV. 10, 1948 SCALE: 1" = 400'

ABANDONMENT MAP
PLEAS-288-A