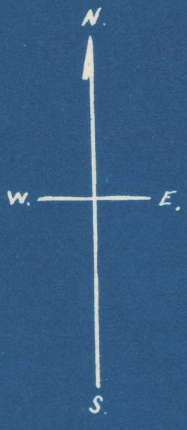
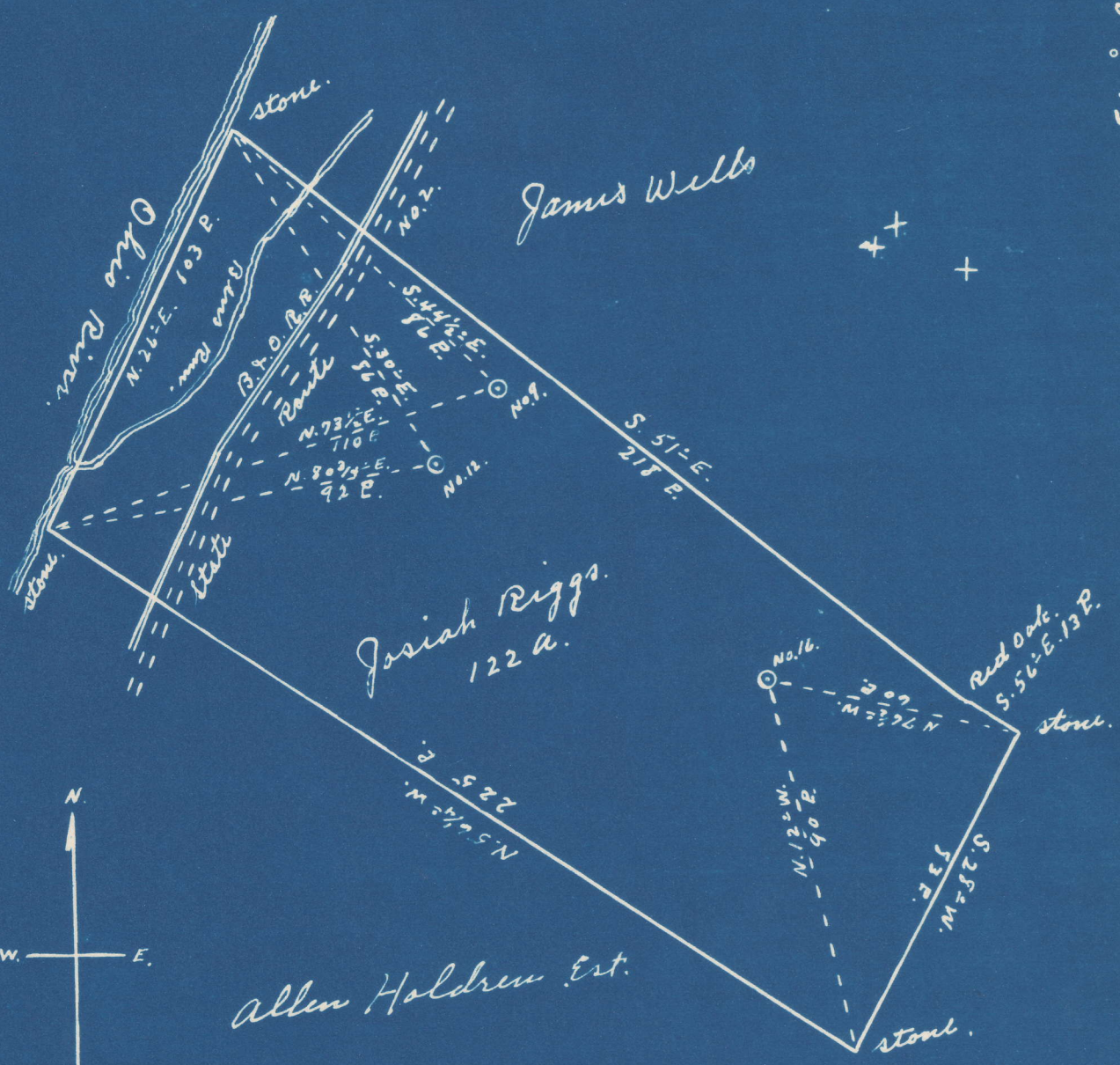


Latitude 37° 30'

Longitude 81° 05'



#16	3.24	S
	1.12	W
#9	2.98	S
	1.52	W
#12	3.11	S
	1.65	W

New Location   
 Drill Deeper   
 Abandonment

Company Schlegel & Dinsmoor  
 Address St Marys, W. Va.  
 Farm Josiah Riggs  
 Tract \_\_\_\_\_ Acres 122 Lease No. \_\_\_\_\_  
 Well (Farm) No. 9, 12, & 16 Serial No. \_\_\_\_\_  
 Elevation (Spirit Level) No. 16, 1006', No. 12, 830', No. 9, 836'  
 Quadrangle St Marys W. Va.  
 County Pleasants District Union  
 Engineer Robert R. Anderson  
 By Jno. Triplett, Surveyor 296  
 Engineer's Registration No. \_\_\_\_\_  
 File No. \_\_\_\_\_ Drawing No. \_\_\_\_\_  
 Date Nov. 15 1948 Scale 1" = 40 P.

NC

STATE OF WEST VIRGINIA  
 DEPARTMENT OF MINES  
 OIL AND GAS DIVISION  
 CHARLESTON

### WELL LOCATION MAP

FILE NO. PLEAS-293-A-#16  
PLEAS-306-A PLEAS-296-A-#9  
 #12  
 + Denotes location of well on United States Topographic Maps, scale 1 to 62,500, latitude and longitude lines being represented by border lines as shown.

- Denotes one inch spaces on border line of original tracing.