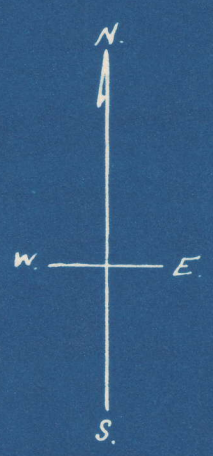
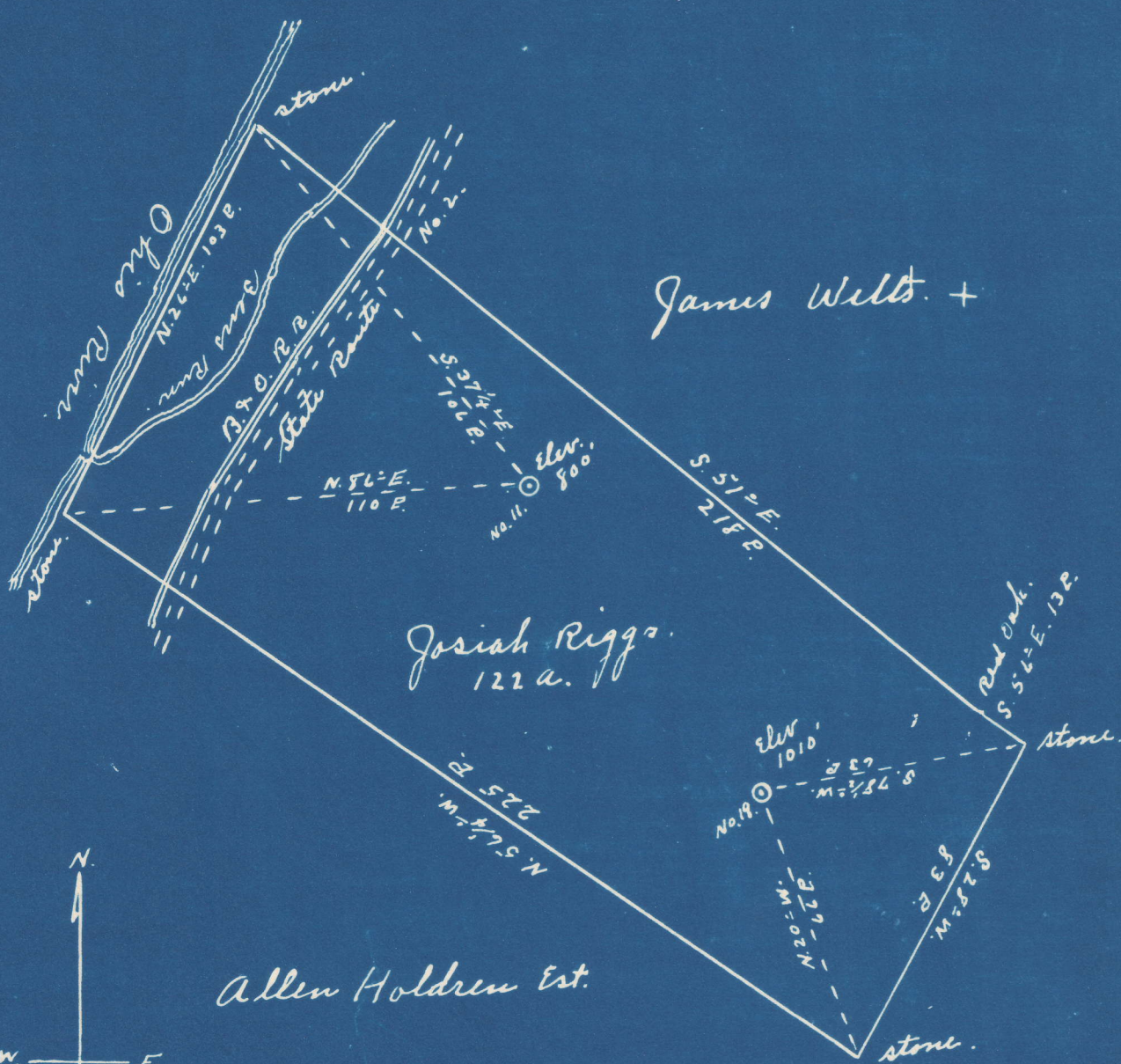


Latitude 39° 30'

Longitude 81° 05'



#19	3.34	S
	1.20	W
#11	3.25	S
	1.51	W

New Location...
 Drill Deeper...
 Abandonment...

Company Schlegel & Dinsmoor
 Address St. Marys W.Va.
 Farm Josiah Riggs
 Tract _____ Acres 122 Lease No. NC
 Well (Farm) No. 11 & 19 Serial No. _____
 Elevation (Spirit Level) No. 11, 800' No. 19, 1010'
 Quadrangle St. Marys
 County Pleasant's District Union
 Engineer Robert R. Anderson
By Jno. Triplett Surveyor
 Engineer's Registration No. 296
 File No. _____ Drawing No. _____
 Date Nov. 15 1948 Scale 1" = 40'

STATE OF WEST VIRGINIA
 DEPARTMENT OF MINES
 OIL AND GAS DIVISION
 CHARLESTON

WELL LOCATION MAP
 FILE NO. PLEAS-279-A-#19
PLEAS-294-A-#11

+ Denotes location of well on United States Topographic Maps, scale 1 to 62,500, latitude and longitude lines being represented by border lines as shown.

- Denotes one inch spaces on border line of original tracing.