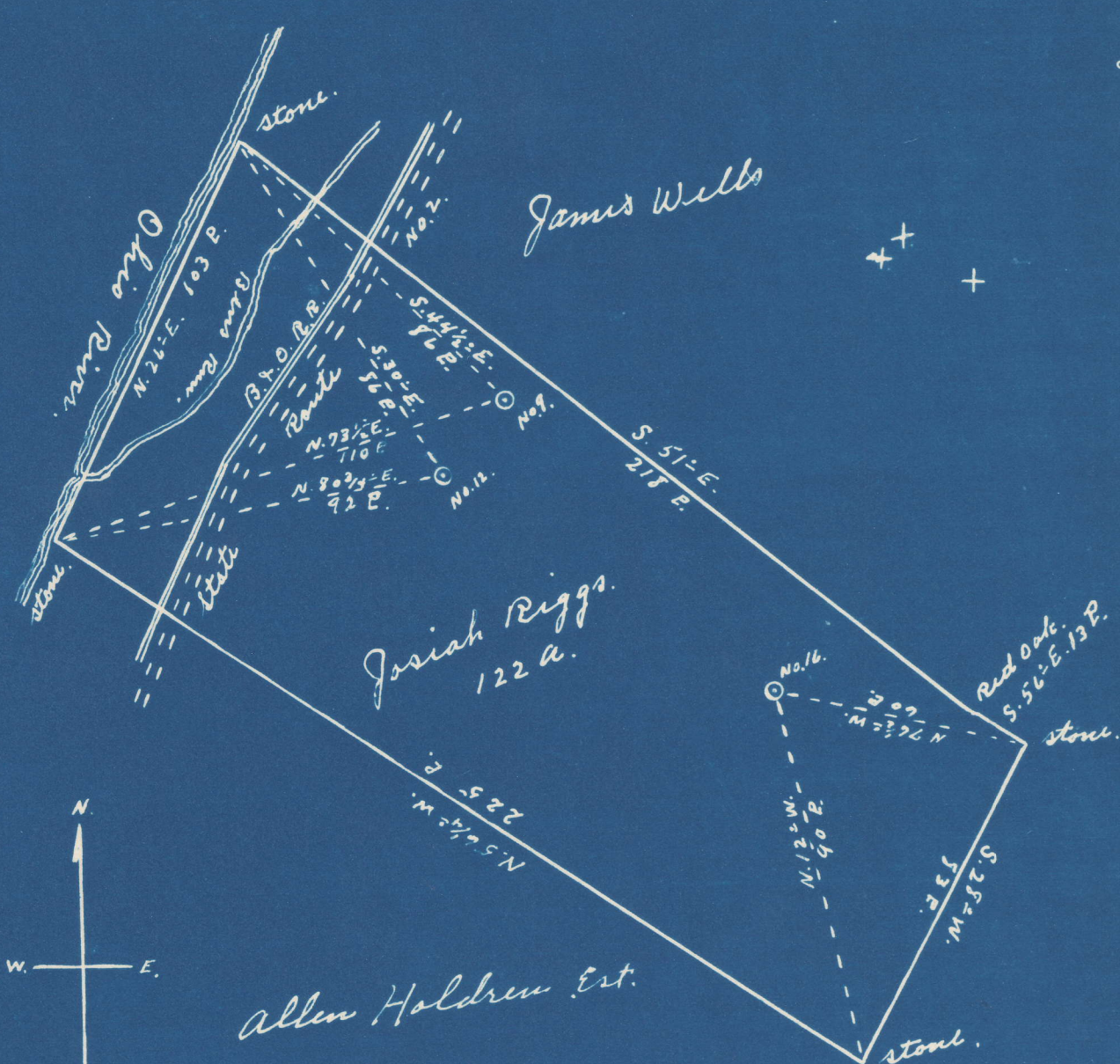


Latitude 37° 30'

Longitude 81° 05'



#16	3.24	S
	1.12	W
#9	2.98	S
	1.52	W
#12	3.11	S
	1.65	W

New Location
 Drill Deeper
 Abandonment

Company Schlegel & Dinsmoor
 Address St Marys, W. Va.
 Farm Josiah Riggs
 Tract _____ Acres 122 Lease No. _____
 Well (Farm) No. 9, 12, & 16 Serial No. _____
 Elevation (Spirit Level) No. 16, 1006', No. 12, 830', No. 9, 836'
 Quadrangle St Marys W. Va.
 County Pleasants District Union
 Engineer Robert R. Anderson
 By Jno. Triplett, Surveyor 296
 Engineer's Registration No. _____
 File No. _____ Drawing No. _____
 Date Nov. 15 1948 Scale 1" = 40 P.

NC

STATE OF WEST VIRGINIA
 DEPARTMENT OF MINES
 OIL AND GAS DIVISION
 CHARLESTON

WELL LOCATION MAP

FILE NO. PLEAS-293-A-#16
PLEAS-306-A PLEAS-296-A-#9
 #12
 + Denotes location of well on United States Topographic Maps, scale 1 to 62,500, latitude and longitude lines being represented by border lines as shown.

- Denotes one inch spaces on border line of original tracing.