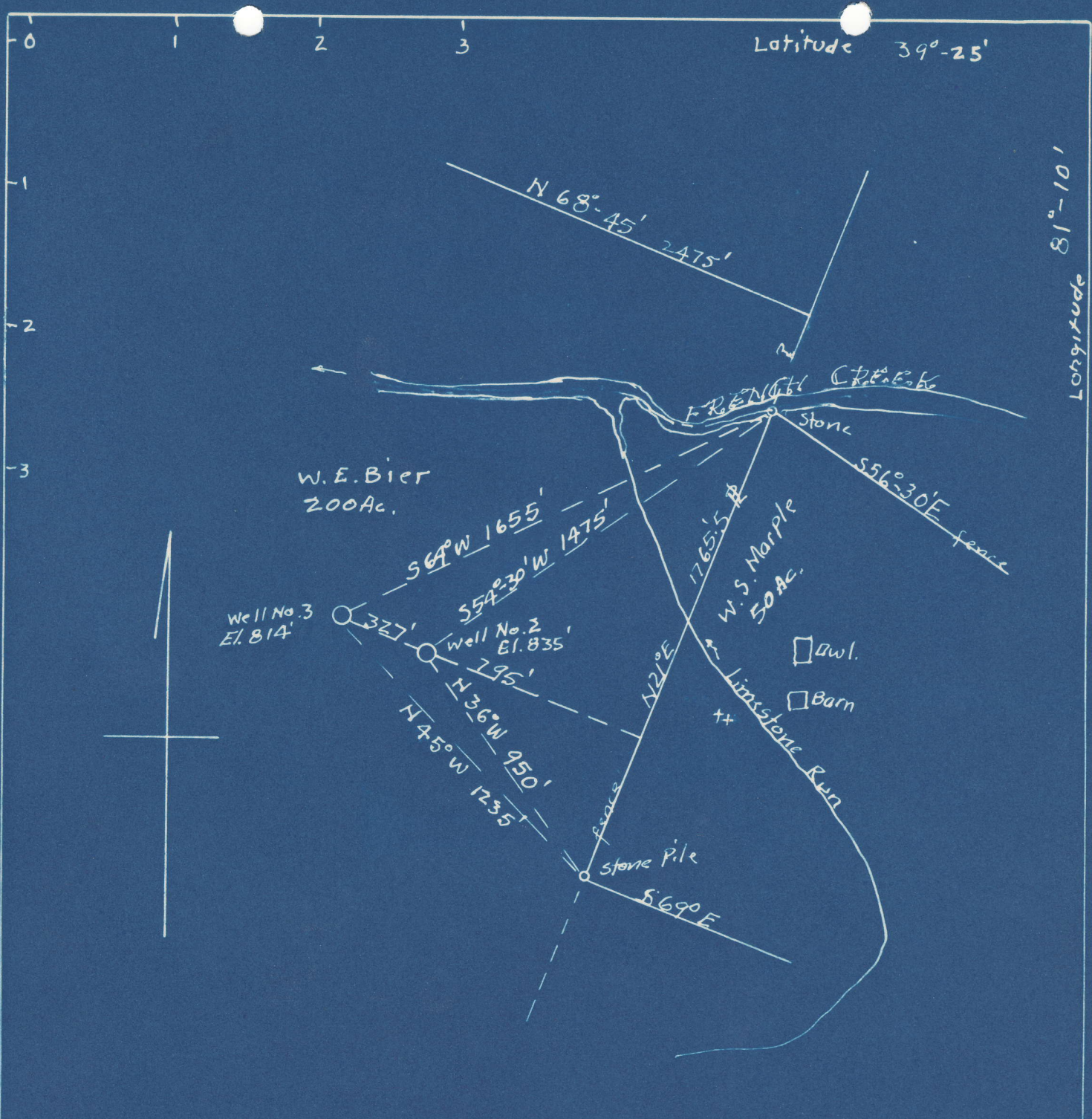


Latitude 39°-25'

Longitude 81°-10'



	4.87	S
#2	2.50	W
<hr/>		
#3	4.82	S
	2.57	W

Abandonment

COMPANY: Dinsmoor & Co.  
 ADDRESS: St. Marys, W. Va.  
 FARM: W.E. Bier  
 TRACT: ACRES: 200 LEASE NO. WC  
 WELL NO. 2 & 3 SERIAL NO.  
 ELEVATION: No. 2 = 835' ; No. 3 = 814'  
 QUADRANGLE: St Marys  
 COUNTY: Pleasants DISTRICT: Jefferson  
 ENGINEER: George R. Clarke  
 ENGINEER'S NO. 102  
 FILE NO. DRAWING NO.  
 DATE: NOV. 9, 1948 SCALE: 1" = 500'

WELL ABANDONMENT MAP

File No - PLEAS-304-A-#2  
PLEAS-305-A-#3