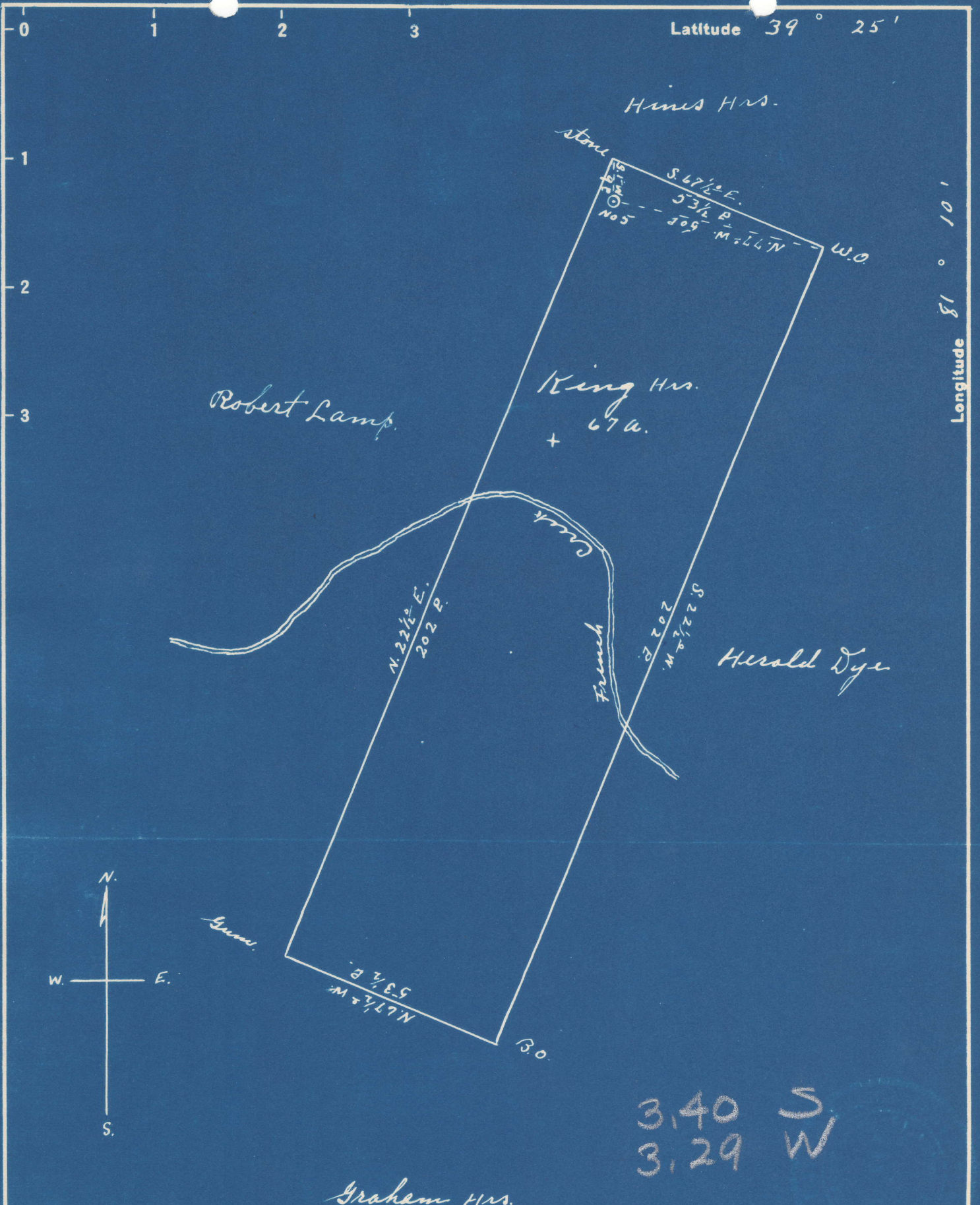


Latitude 39° 25'

Longitude 81° 10'



3,40 S
3,29 W

New Location...
 Drill Deeper.....
 Abandonment.....

Company G. A. Clovis
 Address St. Marys W. Va.
 Farm King Hrs.
 Tract _____ Acres 67 Lease No. _____
 Well (Farm) No. 5 Serial No. _____
 Elevation (Spirit Level) 800'
 Quadrangle St. Marys
 County Pleasants District Washington
 Engineer Robert R. Anderson
 Engineer's Registration No. 296
 File No. _____ Drawing No. _____
 Date Feb. 17, 1949 Scale 1" = 30 P.

STATE OF WEST VIRGINIA
 DEPARTMENT OF MINES
 OIL AND GAS DIVISION
 CHARLESTON

WELL LOCATION MAP
 FILE NO. PLEAS-307-A-#5

+ Denotes location of well on United States Topographic Maps, scale 1 to 62,500, latitude and longitude lines being represented by border lines as shown.
 - Denotes one inch spaces on border line of original tracing.