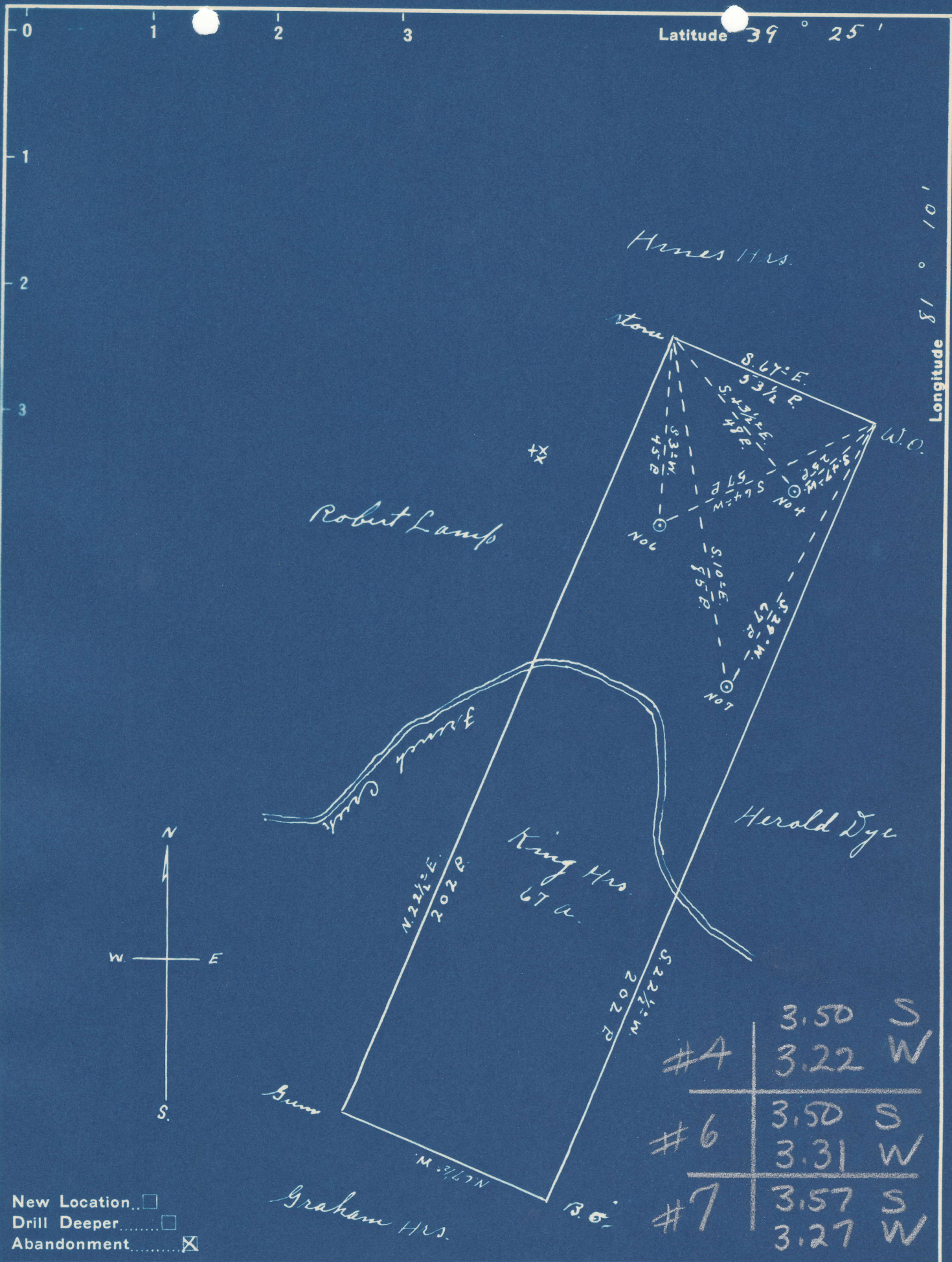


Latitude 39° 25'

Longitude 81° 10'



New Location   
 Drill Deeper   
 Abandonment

Company G. A. Clovis  
 Address St. Marys W. Va.  
 Farm King Hrs.  
 Tract \_\_\_\_\_ Acres 67 Lease No. \_\_\_\_\_  
 Well (Farm) No. 4, 6, 7 Serial No. \_\_\_\_\_  
 Elevation (Spirit Level) No. 4 746' No. 6, 664' No. 7, 680'  
 Quadrangle St. Marys  
 County Pleasants District Washington  
 Engineer Robert R. Anderson  
134 8th Tripletts. Surveyor.  
 Engineer's Registration No. 296  
 File No. \_\_\_\_\_ Drawing No. \_\_\_\_\_  
 Date June 24 1945 Scale 1" = 30 P.

STATE OF WEST VIRGINIA  
 DEPARTMENT OF MINES  
 OIL AND GAS DIVISION  
 CHARLESTON

WELL LOCATION MAP  
 PLCAS-311-A-#4  
 FILE NO. PLCAS-312-A-#6  
 PLCAS-313-A-#7

+ Denotes location of well on United States Topographic Maps, scale 1 to 62,500, latitude and longitude lines being represented by border lines as shown.  
 - Denotes one inch spaces on border line of original tracing.